

Model 36-CRRH Heavy-Duty Chain Driven Live Roller with Hex Shaft (Roll-to-Roll)

CHAIN ROLLER

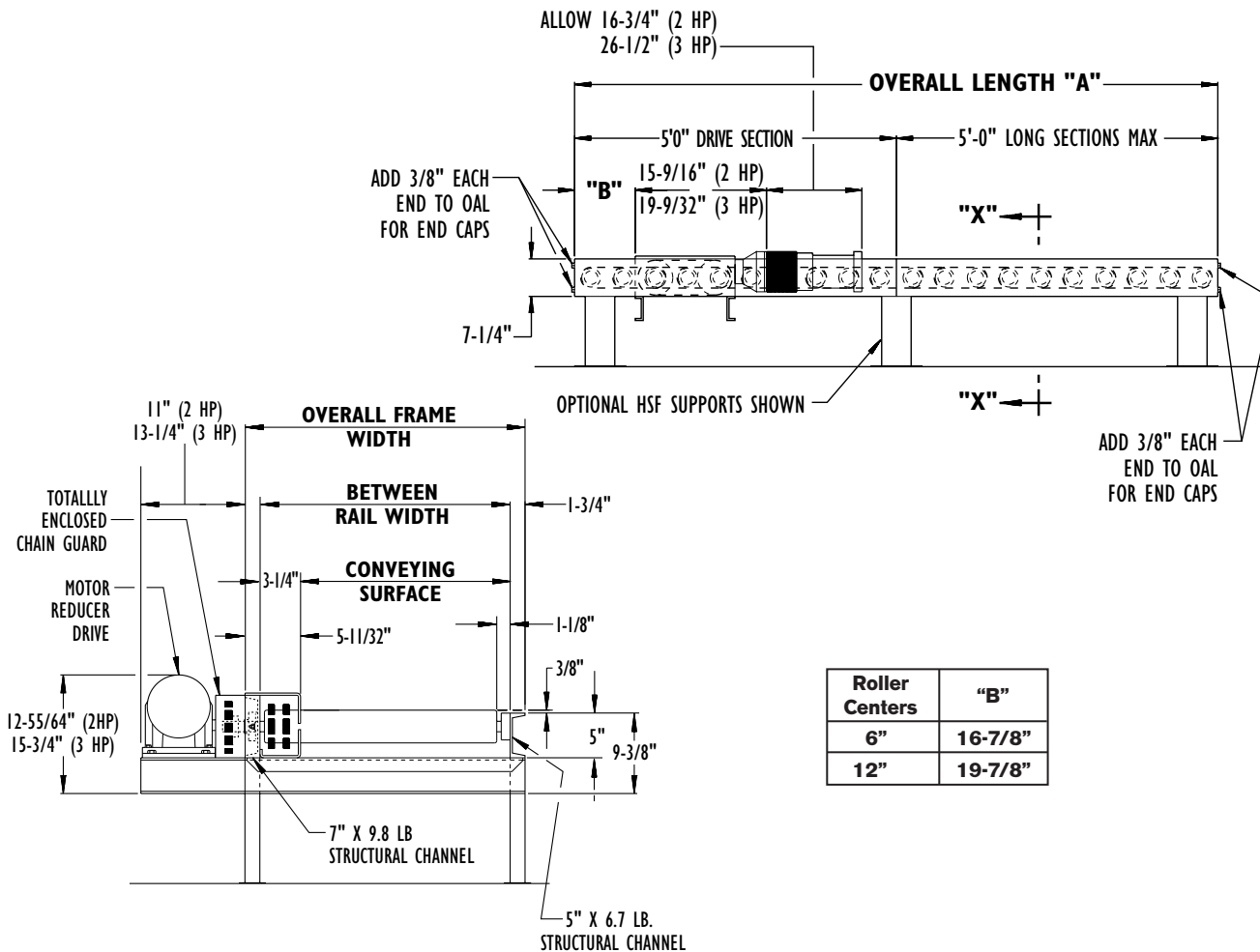
The Model 36-CRRH is a heavy-duty, chain driven roller conveyor. Its tough, rugged design allows it to provide service under demanding manufacturing operations. Use the 36-CRRH for conveying heavy pallets and drums.



- ★ 11 Bed Widths
- ★ Center Drive
- ★ Reversible
- ★ Chain Driven Rollers
- ★ Fixed HSF-Type Floor Supports Available

SIZE TO ORDER Overall Length "A"	Conveying Surface	19 3/4"	21 3/4"	23 3/4"	27 3/4"	29 3/4"	33 3/4"	35 3/4"	41 3/4"	47 3/4"	53 3/4"	55 3/4"
	Between Rail Width	23"	25"	27"	31"	33"	37"	39"	45"	51"	57"	59"
Overall Frame Width	Overall Frame Width	26 27/32"	28 27/32"	30 27/32"	34 27/32"	36 27/32"	40 27/32"	42 27/32"	48 27/32"	54 27/32"	60 27/32"	62 27/32"
5'	WEIGHTS (Lbs.) Based on 6" Roller Centers	792	819	846	900	927	981	1008	1089	1170	1251	1278
10'		1284	1336	1387	1490	1541	1644	1695	1849	2003	2157	2208
15'		1776	1852	1928	2079	2155	2306	2382	2609	2836	3063	3138
20'		2268	2368	2468	2668	2768	2968	3068	3368	3668	3968	4068
25'		2760	2885	3009	3258	3382	3631	3755	4128	4501	4873	4998
30'		3252	3405	3558	3863	4015	4320	4473	4931	5388	5846	5998
40'		4236	4434	4631	5026	5223	5617	5815	6407	6999	7590	7788
50'		5220	5466	5712	6204	6450	6942	7188	7926	8664	9402	9648
60'		6204	6499	6794	7383	7678	8267	8562	9446	10330	11214	11508
70'		7188	7532	7875	8562	8905	9592	9935	10965	11995	13025	13368
80'		8172	8564	8956	9740	10132	10916	11308	12484	13660	14836	15228
90'	9156	9597	10038	10918	11360	12241	12682	14004	15236	16648	17088	

All weights in catalog are conveyor weights only. Accessories, crating, etc., are not included.



Roller Centers	"B"
6"	16-7/8"
12"	19-7/8"

SECTION "X-X"

Standard Specifications

BED—Roller bed with 3-1/2 in. x .300 in. wall unplated tread rollers with 1-1/16 in. hex shaft spaced every 6 in. or 12 in. Mounted in 5 ft. long powder painted structural steel channel frame bolted together with butt couplings.

CENTER DRIVE—Top side mounted drive, mounted to 5 ft. long section near center of conveyor. Chain guard located on left hand side.

DRIVE CHAIN—No. 60 roller chain.

CHAIN GUARD—Formed steel upper & lower chain guard mounted to top and bottom of channel frame to totally enclose drive chains.

BEARINGS—Sealed, pre-lubricated ball bearings.

SPEED REDUCTION—Heavy-duty sealed worm gear C-Face speed reducer. No. 80 roller chain to drive shaft.

MOTOR—2 HP—230/460V—3 Ph. 60 Hz. Totally Enclosed C-Face.

FLEXIDINE CLUTCH—Mounted between motor and reducer provide soft start and intermittent overload protection.

CONVEYING SPEED—Constant 30 FPM.

CAPACITY—Maximum load per linear foot of conveyor 2000 lbs. with supports on 5 ft. centers. NOT TO EXCEED CAPACITY IN CHART.

FLOOR SUPPORTS—Now supplied as optional equipment.

LOAD CAPACITY CHART @ 30 FPM									
HP	OVERALL FRAME WIDTH			OVERALL FRAME WIDTH			OVERALL FRAME WIDTH		
	26-27/32" to 30-27/32"			34-27/32" to 42-27/32"			48-27/32" to 62-27/32"		
	TOTAL LOAD (Lbs.)			TOTAL LOAD (Lbs.)			TOTAL LOAD (Lbs.)		
	UP TO 30'	UP TO 60'	UP TO 90'	UP TO 30'	UP TO 60'	UP TO 90'	UP TO 30'	UP TO 60'	UP TO 90'
2	21000	19200	17400	20400	18000	15600	19400	16000	12500
3	27000	25200	23400	26400	24000	21600	25400	22000	18500

Optional Equipment

FLOOR SUPPORTS—HSF Type floor supports are available with a wide range of adjustment. Specify top of belt or roller elevation. One support required at every bed joint and ends of conveyor. Holes in feet for lagging to floor. Knee braces recommended above HSF-6 support.

CONVEYING SPEED—Other constant and variable speeds. *NOTE: Capacity affected with speed change.*

O-RING DRIVE CHAIN—With sealed in lubricant (Recommended for applications that do not permit regular lubrication).

MOTORS—Energy efficient, other characteristics. 3 HP maximum.

ELECTRICAL CONTROLS—Non-reversing or reversible magnetic starters and push-button stations.