

Model CCEZ Plastic Belt Conveyor (Zero Pressure Accumulating Type)

The Model CCEZ is a horizontal plastic belt conveyor designed for accumulating 12 & 24 packs of canned beverages where high speeds and large through-puts are required.



- ★ EZLogic® Accumulation System
- ★ High Speed
- ★ Zero-pressure Accumulation
- ★ Adjustable MS-Type Floor Supports Available

HOW IT WORKS

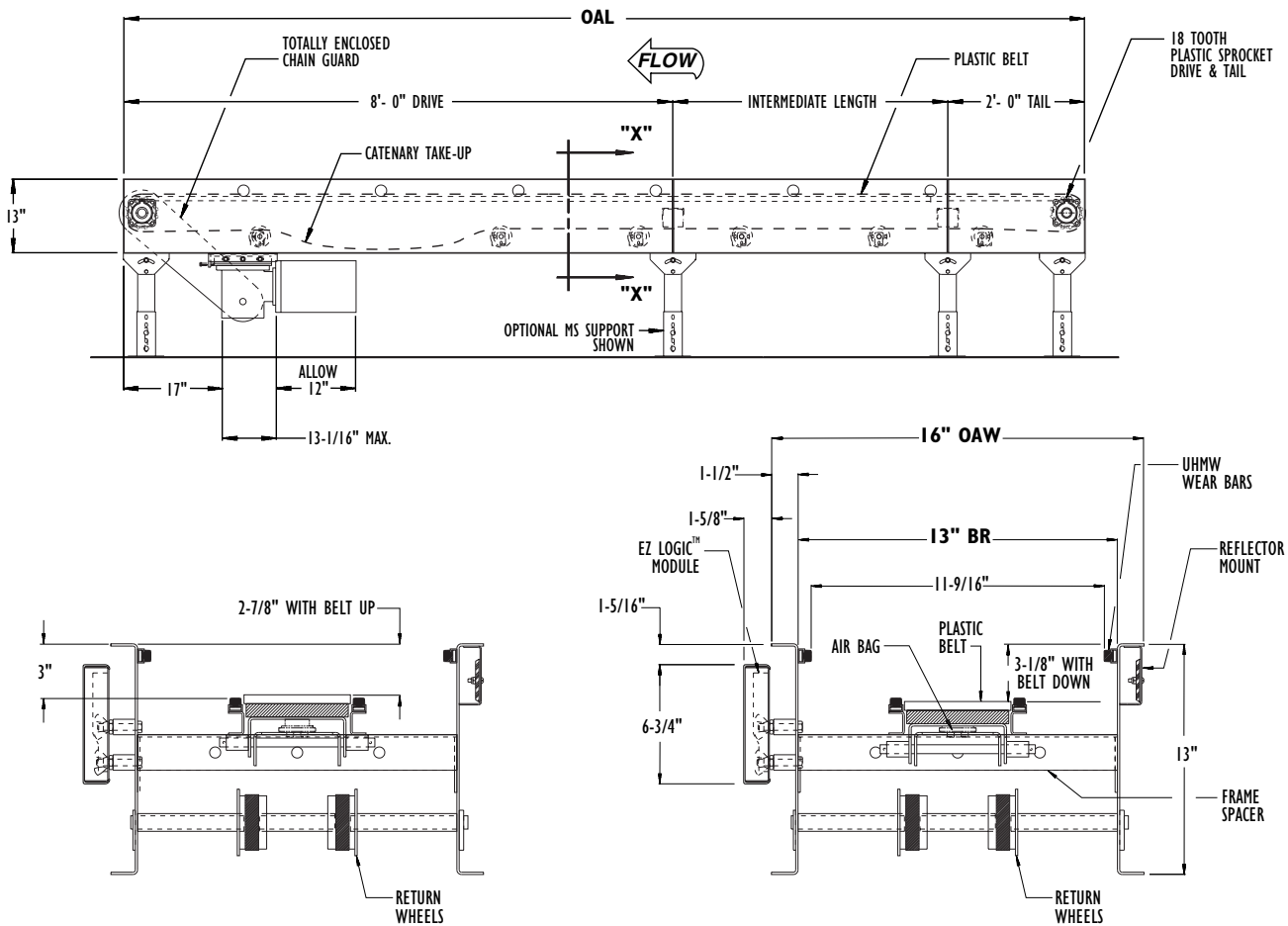
The conveyor is made up of 24 in. long accumulation zones. The product is conveyed on a low friction plastic belt. The belt is held against the bottom of the product by means of a pair of air actuators. When accumulation begins, Hytrol's EZLogic® Accumulation Module sense product presence, which causes the air actuators to deflate. This allows the plastic belt to lower and sets the product on a pair of UHMW wear bars, where the product slides to a stop. This sequence will continue until the conveyor is loaded. When the discharge zone is signaled to move forward, all zones behind will move forward in sequence.



NOTE: Bed sections available in the following multiples:

- Drive Bed – 8'
- Tail Bed – 2'
- Intermediate Bed – 4', 6', 8', & 10'

ACCUMULATION - ZERO PRESSURE



SECTION X-X

Standard Specifications

BELT—6 in. wide x 1/2 in. thick low friction plastic belt.

FRAME—13 in. deep x 1-1/2 in. flange x 12 ga. powder painted steel frame.

ACCUMULATION ZONES—24 in. long, air controlled.

EZLogic® ACCUMULATION MODULE—Located in each zone (Retroreflective). UL and CSA approved.

AIR REQUIREMENTS—Recommended working pressure 25 P.S.I. Free air consumption at 25 P.S.I.—.0026 cu. ft. per zone actuation.

FILTER REGULATOR—Supplied for main air supply line. (3/8 in. NPT port).

DRIVE—Mounted underneath at discharge end.

DRIVE & TAIL SPROCKETS—18 tooth plastic split sprocket keyed to 1-7/16 in. dia. steel shaft.

TAKE-UP—Catenary provided at discharge end.

BEARINGS—Sealed, pre-lubricated, regreaseable, self-aligning, ball bearings on drive and tail shaft.

SPEED REDUCTION—Sealed worm gear C-Face speed reducer. no.60 roller chain to drive shaft.

MOTOR—1 HP—230/460V—3 PH. 60 Hz. Energy Efficient C-Face with AC Variable speed controller.

POWER SUPPLY—27 VDC, 4 amp Power Supply located near center of conveyor. Maximum of 50 zones per power supply (25 each side of power supply). Requires 120 VAC input.

BELT SPEED—Variable 20 - 200 fpm.

CAPACITY—See load capacity chart.

FLOOR SUPPORTS—Now supplied as optional equipment.

6" Belt Width

Length	TOTAL LOAD (LBS) @ 200 FPM (Horizontal)				
	3/4	1	1 1/2	2	3
20'	360	500	800	1040	1600
30'	330	480	750	1020	1560
40'	300	440	725	1000	1520
50'	N/A	400	700	940	1500
60'	N/A	360	660	925	1470
70'	N/A	N/A	630	910	1440
80'	N/A	N/A	600	880	1400
90'	N/A	N/A	N/A	840	1350
100'	N/A	N/A	N/A	800	1300

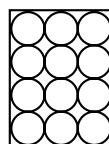
NOTE: Standard CCEZ is designed to convey cartons 4 cans wide. Use optional 4-1/2 in. belt width when conveying cartons 3 cans wide.

EZLogic® Accumulation System

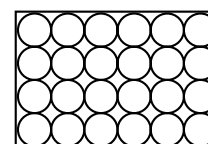
Hytrol's EZLogic®, or Electronic Zero-pressure Logic Accumulation System, combines the sensing accuracy of photo-electronics with discrete electronic logic control without the use of a PLC or pneumatic logic components. The EZLogic® Accumulation System provides many features including:

Zero-pressure accumulation of product

Built-in enhanced Slug Mode features allow product to be transported on the conveyor without separation, even when the conveyor is in accumulation mode! Product may be slug released from the conveyor with the same ease as singulation release. Jams on the conveyor automatically activate accumulation even during slug release, preventing product pile-up.



12 PACK



24 PACK



Optional Equipment

FLOOR SUPPORTS—MS Type floor supports are available with a wide range of adjustment. Specify top of belt or roller elevation. One support required at every bed joint and ends of conveyor. Holes in feet for lagging to floor. Knee braces recommended above MS-6 support.

CONVEYING SPEED—Other constant and variable speeds available. **NOTE: Capacity affected with speed change.**

SIDE MOUNTED END DRIVE—Motor reducer unit mounted to side of conveyor at discharge end. Minimum elevation to top of belt 14 in.

O-RING DRIVE CHAIN—With sealed in lubricant (Recommended for applications that do not permit regular lubrication).

4-1/2 in. Belt Width—For conveying cartons 3 cans wide.

POLY-TIER SUPPORTS—36 in. to 120 in. support heights in 6 in. increments. Knee braces supplied.

ACCUMULATION ZONES—12 in., 18 in., 30 in., & 36 in. long available. Frame lengths change with zone.

Note: 51 or more zones will require additional power supply and isolation cable.

CEILING HANGERS—5/8 in. dia. x 8 ft. long unplated fully threaded rods. Other lengths and galvanized rods available.

EZ-Logic :

- **Slug mode control cable** - Attaches to discharge module micro connector. Requires "dry contact" type input signal. Closed for slug mode, open for singulate. Required only if user wishes to alternate between singulation mode and slug mode.
- **Power supply isolation cable** - Used when joining conveyors with separate power supplies.
- **Accumulation module with photo eye output** - Used to supply "dry contact" photo eye output or to accept a voltage type zone stop input.