

E-Z GLIDE

ROLL OUT SHELVING SYSTEM ASSEMBLY INSTRUCTIONS

TABLE OF CONTENTS

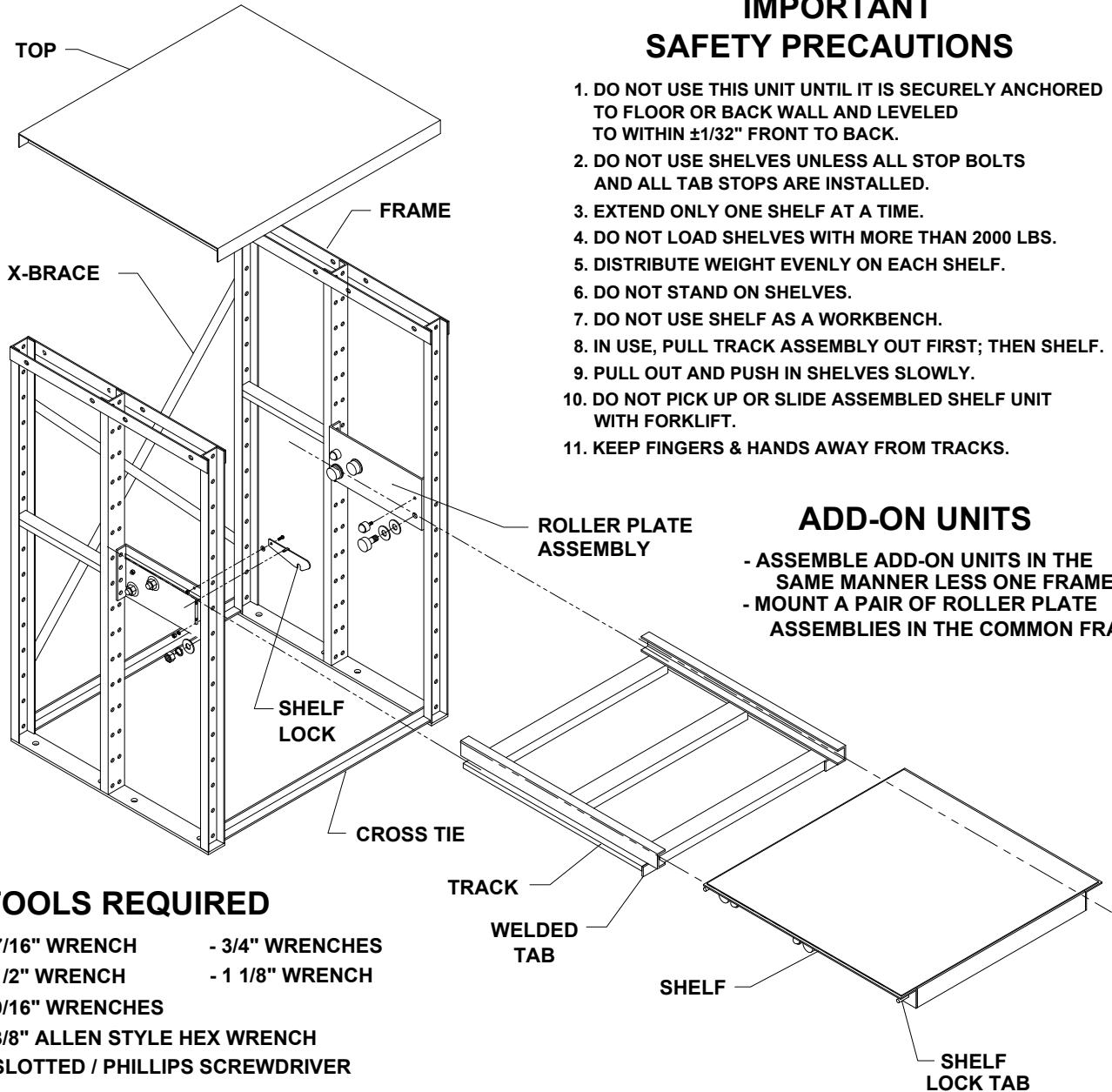
- SHEET 2 - COMPONENT - HARDWARE LIST**
- SHEET 3 - ASSY PRECAUTIONS - PROCEDURES**
- SHEET 4 - FRAME ASSEMBLY**
- SHEET 5 - ROLLER PLATE INSTALLATION**
- SHEET 6 - ROLLER PLATE ASSEMBLY**
- SHEET 7 - SHELF ASSY & SHELF, TRACK INSTALLATION**
- SHEET 8 - STOP BOLT & TAB INSTALLATION**

JARKE CORPORATION
A Leggett & Platt Company

NILES, IL 60714-3499

ASSEMBLY PRECAUTIONS AND PROCEDURES:

IMPORTANT SAFETY PRECAUTIONS



1. DO NOT USE THIS UNIT UNTIL IT IS SECURELY ANCHORED TO FLOOR OR BACK WALL AND LEVELED TO WITHIN $\pm 1/32$ " FRONT TO BACK.
2. DO NOT USE SHELVES UNLESS ALL STOP BOLTS AND ALL TAB STOPS ARE INSTALLED.
3. EXTEND ONLY ONE SHELF AT A TIME.
4. DO NOT LOAD SHELVES WITH MORE THAN 2000 LBS.
5. DISTRIBUTE WEIGHT EVENLY ON EACH SHELF.
6. DO NOT STAND ON SHELVES.
7. DO NOT USE SHELF AS A WORKBENCH.
8. IN USE, PULL TRACK ASSEMBLY OUT FIRST; THEN SHELF.
9. PULL OUT AND PUSH IN SHELVES SLOWLY.
10. DO NOT PICK UP OR SLIDE ASSEMBLED SHELF UNIT WITH FORKLIFT.
11. KEEP FINGERS & HANDS AWAY FROM TRACKS.

ADD-ON UNITS

- ASSEMBLE ADD-ON UNITS IN THE SAME MANNER LESS ONE FRAME.
- MOUNT A PAIR OF ROLLER PLATE ASSEMBLIES IN THE COMMON FRAME.

TOOLS REQUIRED

- 7/16" WRENCH
- 3/4" WRENCHES
- 1/2" WRENCH
- 1 1/8" WRENCH
- 9/16" WRENCHES
- 3/8" ALLEN STYLE HEX WRENCH
- SLOTTED / PHILLIPS SCREWDRIVER

ASSEMBLY PROCEDURE:

FOR DETAILED INSTRUCTIONS SEE ATTACHED

STEP 1: FRAME ASSEMBLY

- ATTACH CROSS TIES TO FRAMES USING (4) 1/2" BOLTS.
- ATTACH X-BRACES USING (4) 1/2" BOLTS.
- ATTACH TOP TO FRAMES USING (8) 1/2" BOLTS.

STEP 2: ROLLER PLATE INSTALLATION

- ATTACH ROLLER PLATES AT DESIRED HEIGHTS USING (4) 1/2" BOLTS. BE SURE TO CORRECTLY POSITION LEFT & RIGHT ROLLER PLATES.

STEP 3: ROLLER PLATE ASSEMBLY

- INSTALL ROLLERS AND BALL TRANSFERS TO RIGHT HAND ROLLER PLATES.
- INSTALL ROLLERS, BALL TRANSFERS AND SHELF LOCK TO LEFT HAND ROLLER PLATES.

STEP 4: SHELF ASSEMBLY

- INSTALL ROLLERS AND BALL TRANSFERS ON SHELF.

STEP 5: TRACK & SHELF INSTALLATION

- SLIDE TRACK ONTO ROLLER PLATES PER INSTALLATION DETAIL.
- SLIDE SHELF ASSEMBLY INTO TRACK PER INSTALLATION DETAIL.

STEP 6: STOP BOLT INSTALLATION

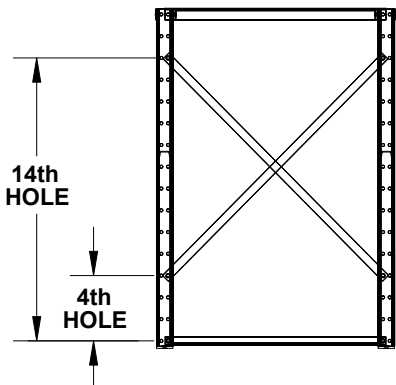
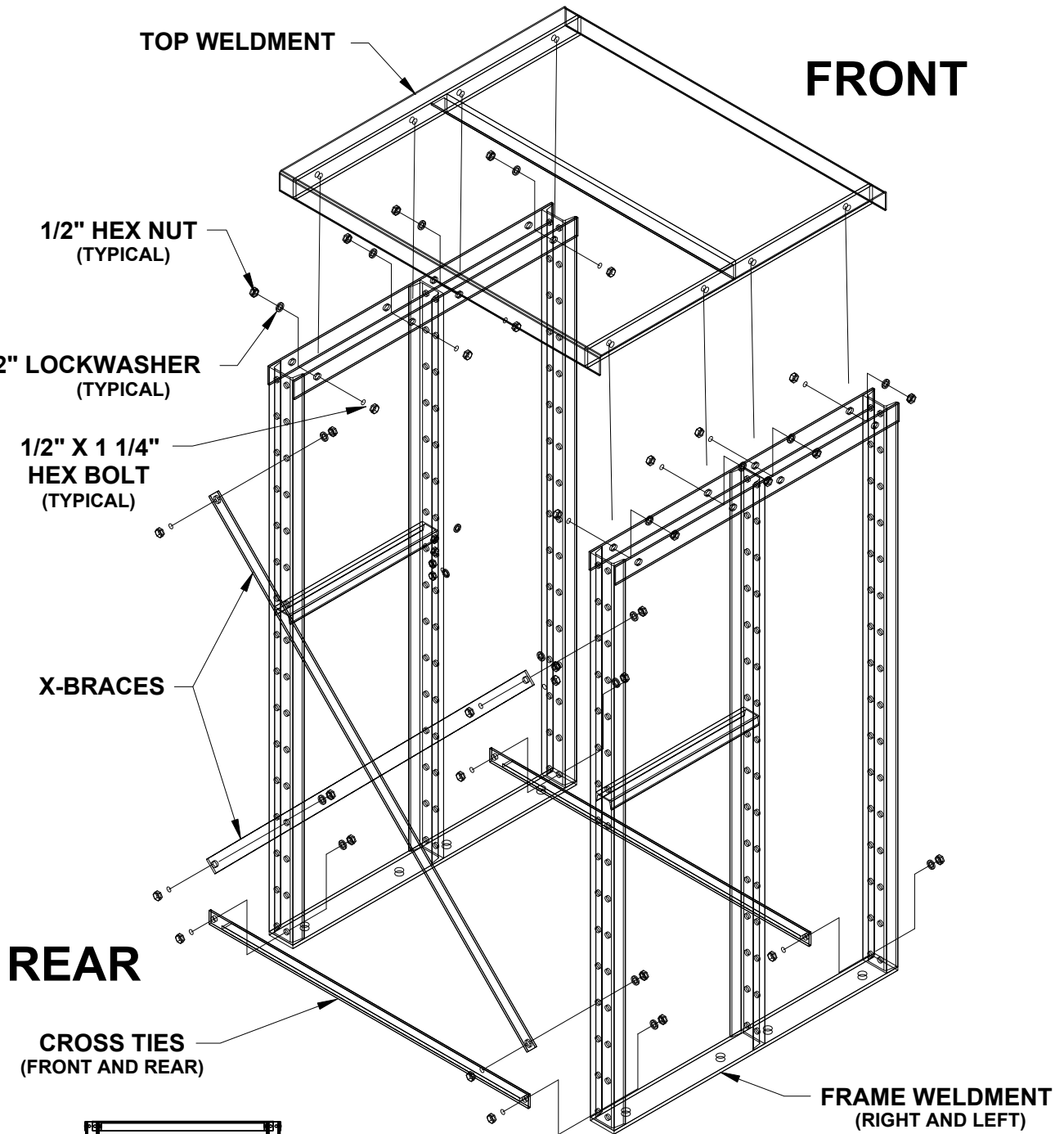
- INSTALL (2) 3/8" X 3" LG STOP BOLTS TO FRONT END OF TRACK.

STEP 7: STOP PLATE INSTALLATION

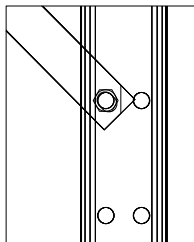
- INSTALL (2) STOP TABS USING (2) 3/8" X 3" BOLTS TO THE REAR END OF TRACK.

STEP 1: FRAME ASSEMBLY

HARDWARE FOR FRAME IS IN BAG # PKS 182



NOTE:
X-BRACE
ORIENTATION

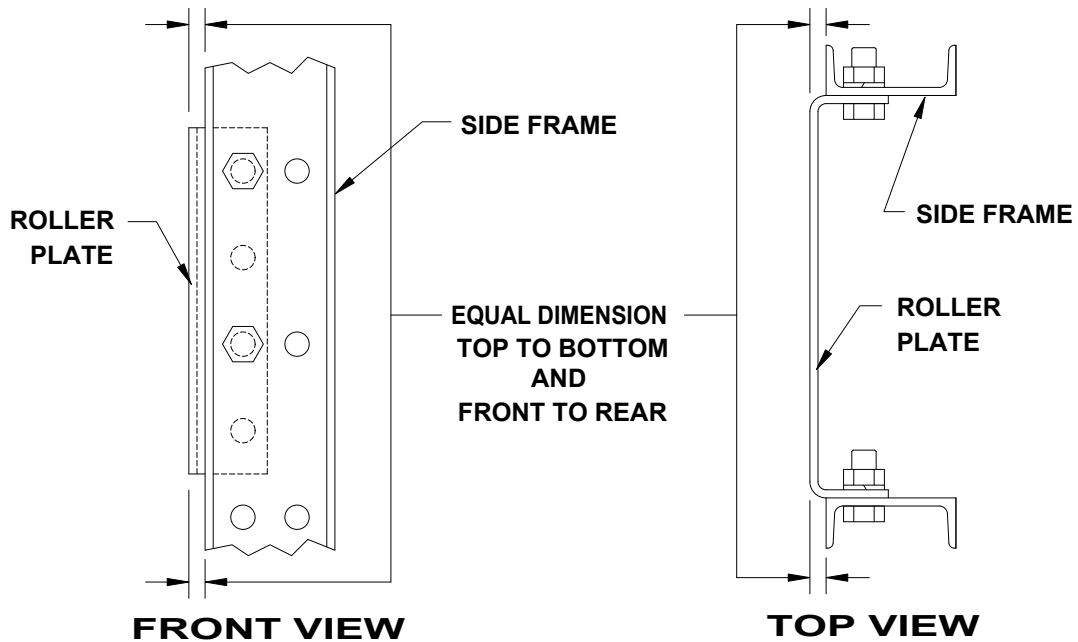
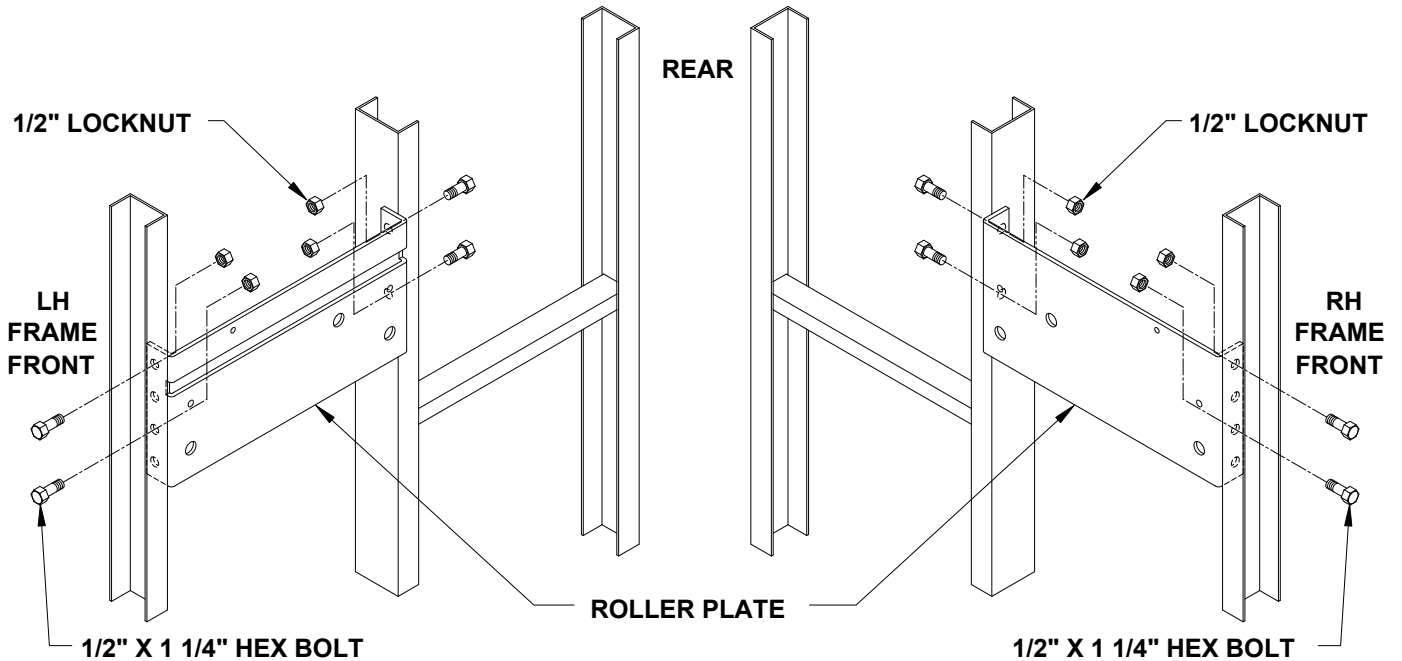
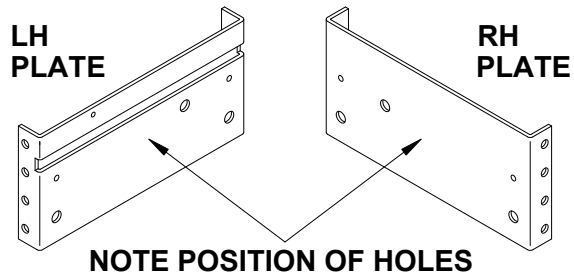


FRAME ASSEMBLY

ASSEMBLE (2) FRAMES, (2) X-BRACES AND (1) TOP. USE 1/2-13 x 1 1/4" BOLTS, 1/2-13 HEX NUTS AND 1/2" SPLIT LOCK WASHER FOR ALL CONNECTIONS. ASSEMBLE ALL COMPONENTS WITH HARDWARE FINGER TIGHT. AFTER TOP IS ASSEMBLED TIGHTEN TOP BOLTS FIRST, THEN THE BALANCE OF THE HARDWARE. TORQUE ALL HARDWARE TO 40 LB-FT.

STEP 2: ROLLER PLATE INSTALLATION

HARDWARE FOR INSTALLATION IS IN BAG # PKS 183

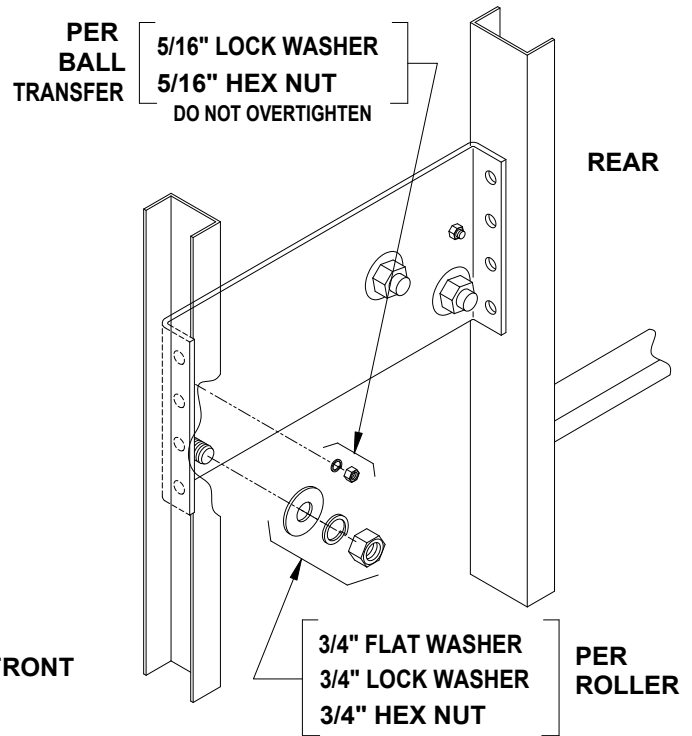
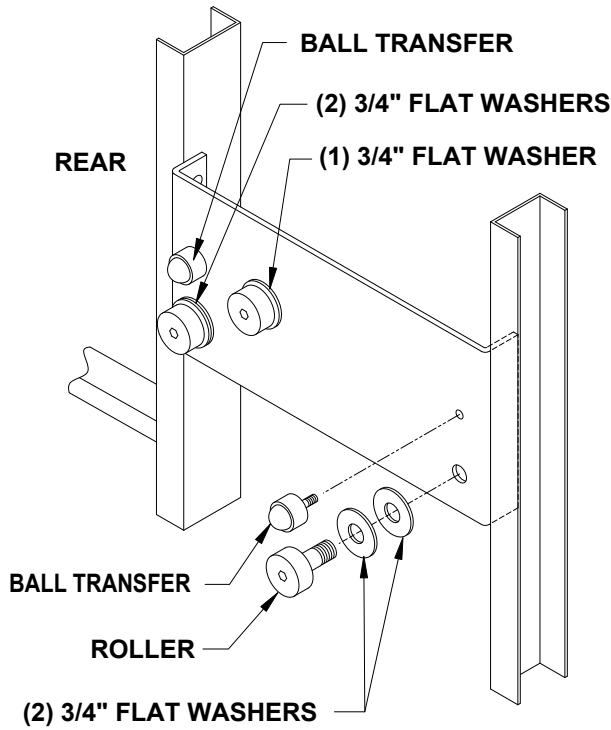


ROLLER PLATE ALIGNMENT

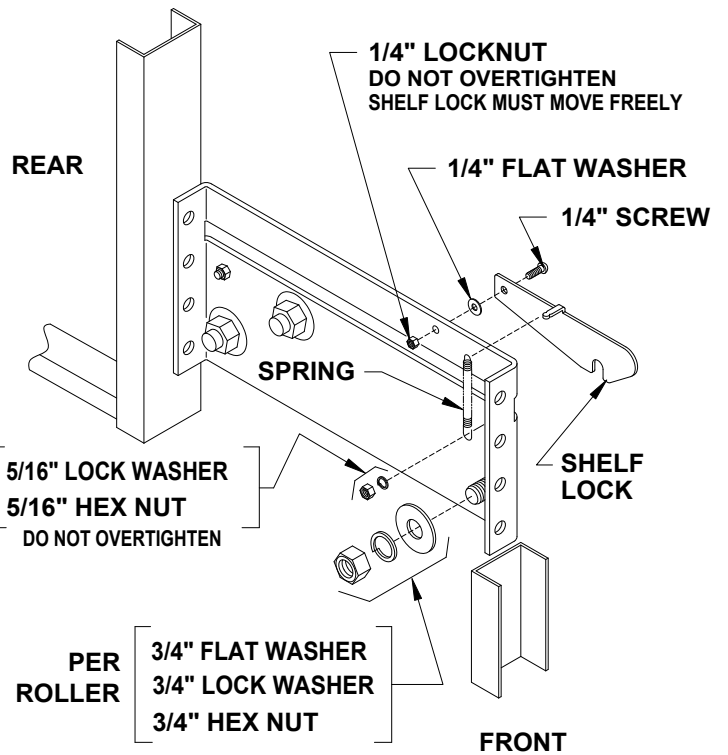
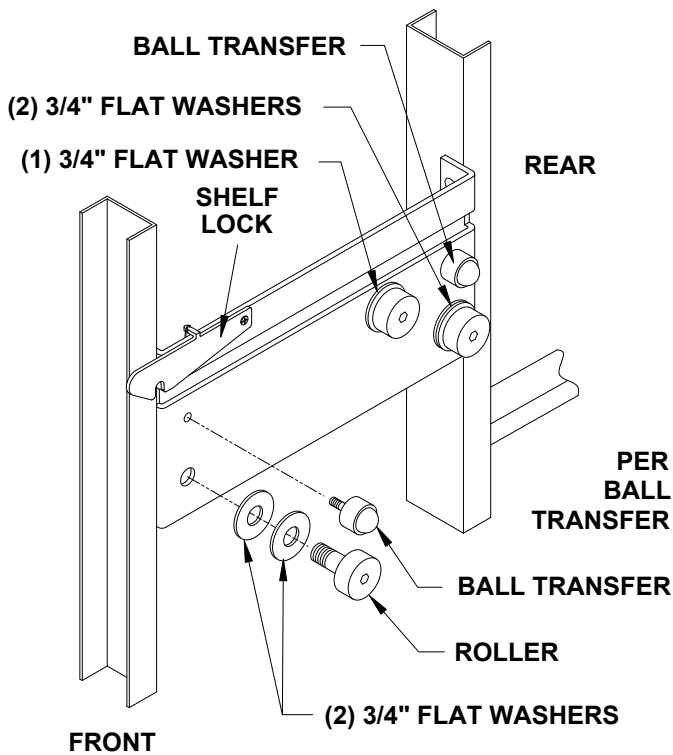
ONCE PLATES ARE ALIGNED SECURELY-TIGHTEN BOLTS

STEP 3: ROLLER PLATE ASSEMBLY

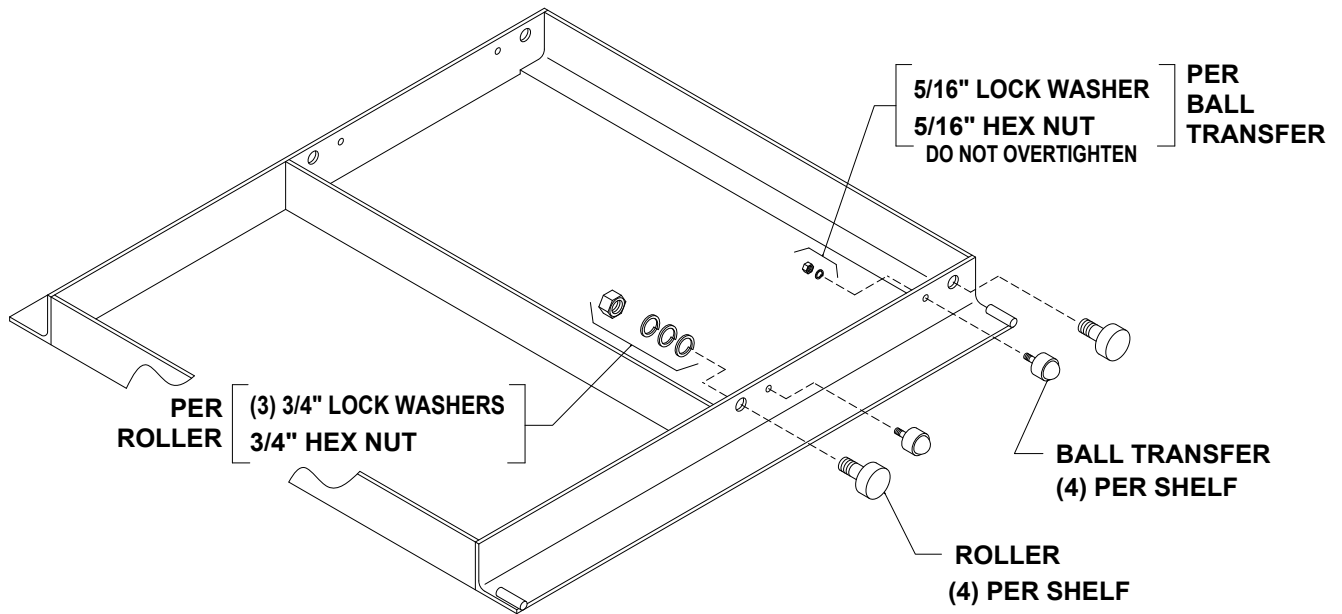
ROLLER PLATES HARDWARE IS IN BAG # PKS 183



RIGHT HAND ROLLER PLATE

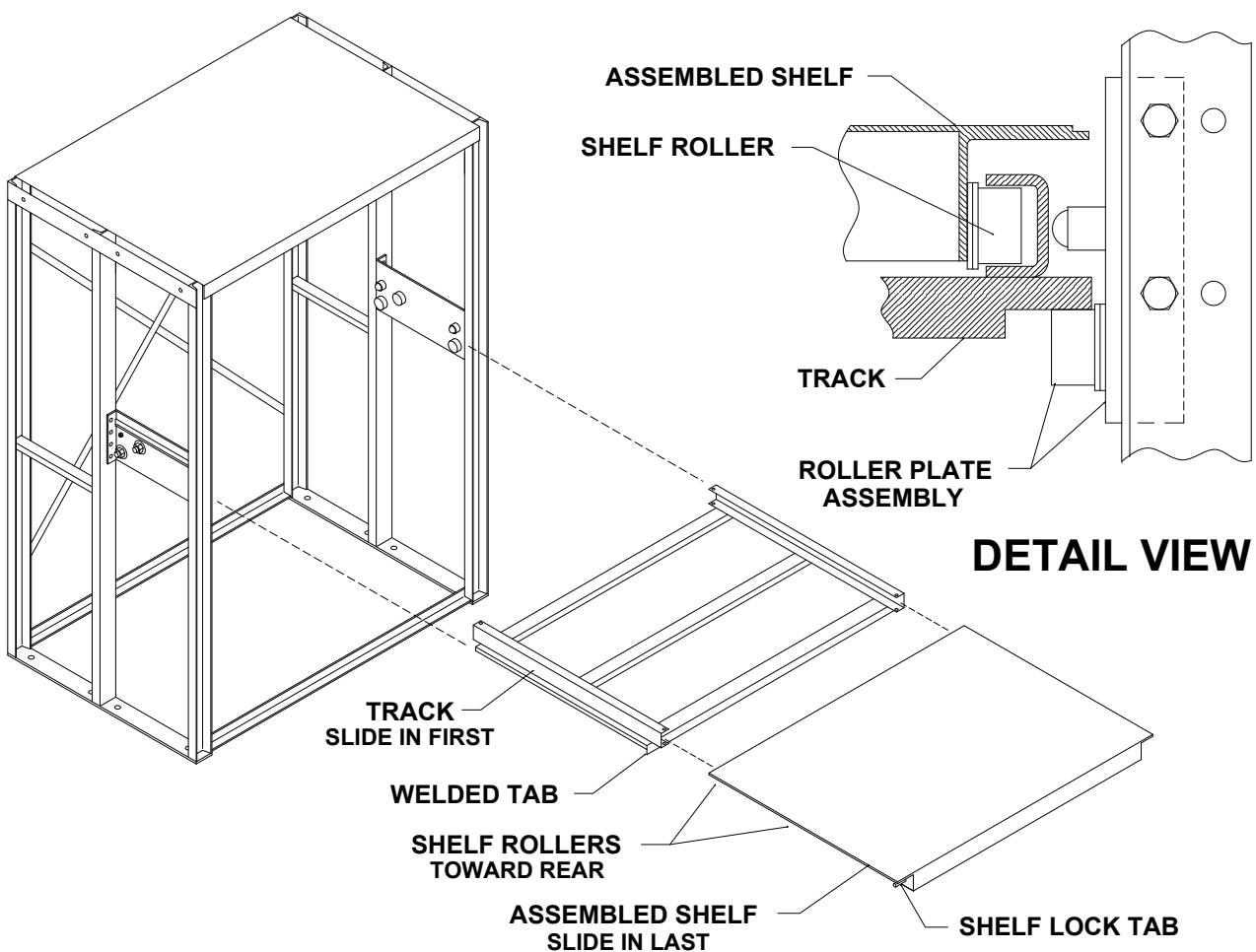


LEFT HAND ROLLER PLATE

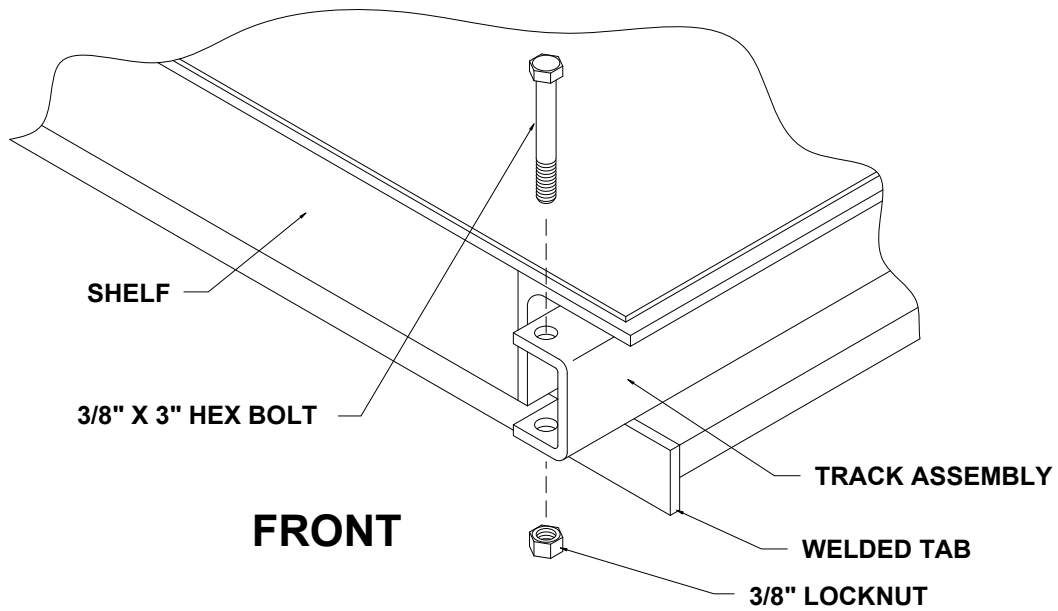


STEP 4: SHELF ASSEMBLY

SHELF HARDWARE IS IN BAG # PKS 139

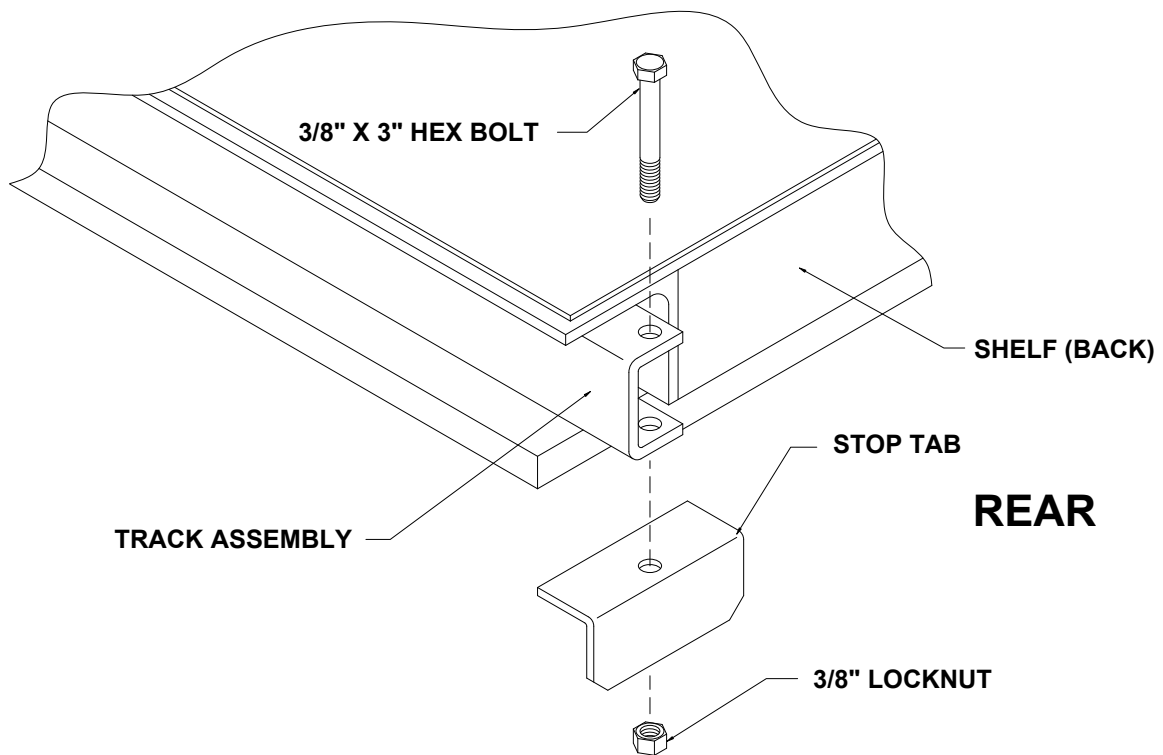


STEP 5: SHELF AND TRACK INSTALLATION



STEP 6: STOP BOLT INSTALLATION

STOP BOLT HARDWARE IS IN BAG # PKS 139



STEP 7: STOP TAB INSTALLATION

STOP TAB HARDWARE IS IN BAG # PKS 139