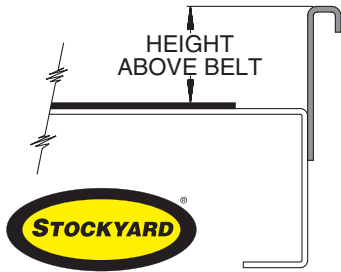


Conveyor Accessories

Guard Rails

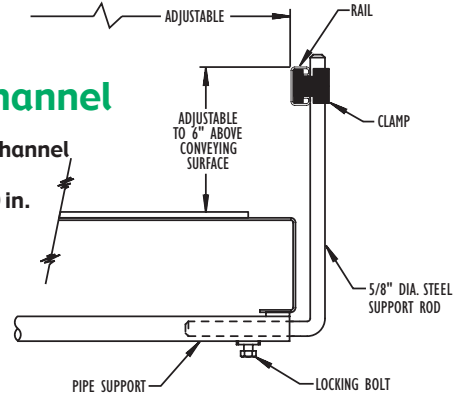
Solid Side Guards



- Bolts to side of TA or TL
- 2 in., 4 in., 6 in., 9 in., & 12 in. heights
- Powder painted steel 6 in. thru 12 in. high
- Formed top with alignment strip

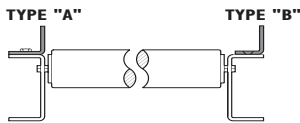
Adjustable Channel

- 1-5/8 in. x 7/8 in. channel powder painted, galvanized, or .080 in. aluminum
- Continuous joint
- Contact Factory for Widths Available



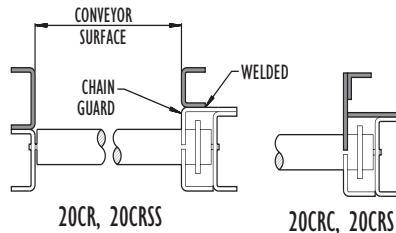
Fixed Angle

- 1 in. x 1 in. powder painted steel for 138 and SW conveyors
- 1-1/2 in. x 1-1/2 in. powder painted steel for 1.9 & 2.0 conveyors
- Type B mounted with shaved carriage bolt screws
- 2 in. x 1-5/8 in. x 4 ga. powder painted steel for 25 & 26 conveyors. Type A only.



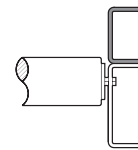
Fixed Channel

- 2-1/2 in. x 1-1/2 in. x 12 ga. powder painted steel channel top of chain guard
- 3-1/2 in. x 1-1/2 in. x 12 ga. painted steel channel other side



Fixed Channel

- 2-1/2 in. x 1 in. powder painted steel channel for 138 & SW conveyors
- 3-1/2 in., 6-1/2 in., 10 in., or 13 in. heights x 1-1/2 in. powder painted steel channel for 1.9 in. & 2.0 in. conveyors



NOTE: Overlapping style available for one direction applications.

Ball Transfer Table



The Ball Transfer Table is used when products are required to be manually rotated or correctly positioned, such as a work station or other similar operation that requires quick, easy handling of the product. Ball Transfer Table is also used when more than two conveyor lines converge and packages must be transferred from one line to another.

- 1 in. Ball Casters
- Steel Channel Frame 3-1/2 in. x 1-1/2 in. x 10 ga., 2-1/2 in. x 1 in. x 12 ga. (Specify skate wheel or 138 Roller Type when mounted in 2-1/2 in. channel)



Ball Caster Centers	BETWEEN RAIL WIDTHS (Weights Per Foot)														
	*10"	13"	15"	*16"	17"	19"	21"	*22"	23"	25"	27"	31"	33"	37"	39"
2"	19.77	25.86	29.15	29.60	32.45	35.72	39.28	41.77	42.27	45.52	48.81	55.35	58.65	65.19	68.48
3"	15.09	18.06	20.57	21.02	21.53	23.99	25.50	26.95	27.45	29.92	32.43	35.85	38.37	41.79	44.30
4"	12.75	15.33	17.45	17.90	18.41	20.48	21.43	21.80	23.55	24.46	26.58	29.61	30.57	33.60	35.72
6"	-	-	-	15.56	16.07	16.97	18.70	19.15	19.65	20.56	22.90	24.15	25.86	27.75	29.48

