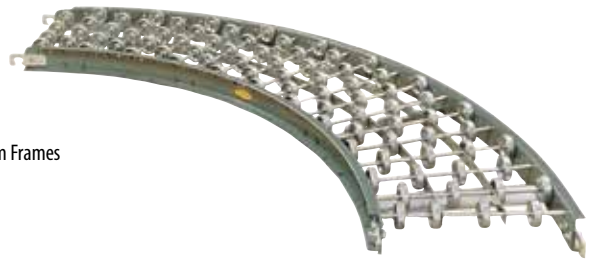


WHEEL

Gravity Skatewheel Curve Conveyor



Skatewheel curves add to the versatility of straight conveyors and provide excellent package orientation because of the differential action of wheels. Curves will convey product with minimum amount of pitch based on weight and size.

- 4 Widths
- Powder Painted Steel or Aluminum Frames
- Butt Coupling on Both Ends
- 30°, 45°, 60° & 90° Curves

STEEL FRAMES

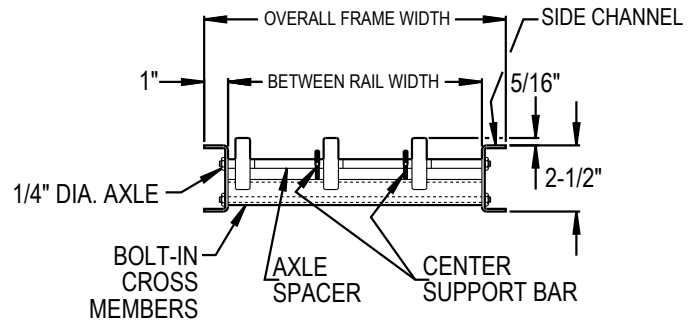
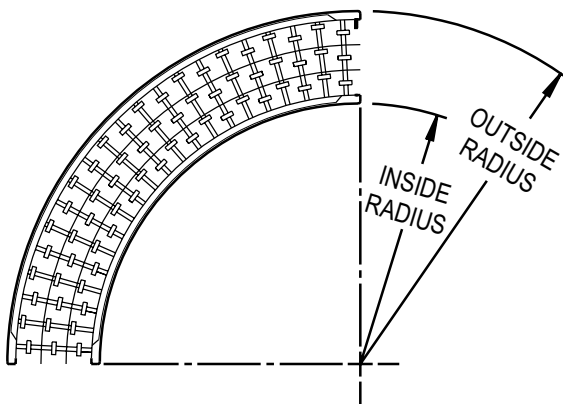
12" Overall Width (48" Outside Radius)				15" Overall Width (48" Outside Radius)				18" Overall Width (48" Outside Radius)				24" Overall Width (60" Outside Radius)			
Model No.	Degree	WPC	Wgts. (Lbs.)	Model No.	Degree	WPC	Wgts. (Lbs.)	Model No.	Degree	WPC	Wgts. (Lbs.)	Model No.	Degree	WPC	Wgts. (Lbs.)
SWC-12-90	90°	63	40	SWC-15-90	90°	84	46	SWC-18-90	90°	94	49	SWC-24-90	90°	156	72
SWC-12-60	60°	42	30	SWC-15-60	60°	56	35	SWC-18-60	60°	63	37	SWC-24-60	60°	102	54
SWC-12-45	45°	30	21	SWC-15-45	45°	40	23	SWC-18-45	45°	45	25	SWC-24-45	45°	78	37
SWC-12-30	30°	30	14	SWC-15-30	30°	40	16	SWC-18-30	30°	45	18	SWC-24-30	30°	60	23

All weights in catalog are conveyor weights only. Accessories, crating, etc., are not included.

ALUMINUM FRAMES

12" Overall Width (48" Outside Radius)				15" Overall Width (48" Outside Radius)				18" Overall Width (48" Outside Radius)				24" Overall Width (60" Outside Radius)			
Model No.	Degree	WPC	Wgts. (Lbs.)	Model No.	Degree	WPC	Wgts. (Lbs.)	Model No.	Degree	WPC	Wgts. (Lbs.)	Model No.	Degree	WPC	Wgts. (Lbs.)
AWC-12-90	90°	63	22	AWC-15-90	90°	84	26	AWC-18-90	90°	94	28	AWC-24-90	90°	156	43
AWC-12-60	60°	42	17	AWC-15-60	60°	56	20	AWC-18-60	60°	63	21	AWC-24-60	60°	102	33
AWC-12-45	45°	30	12	AWC-15-45	45°	40	14	AWC-18-45	45°	45	15	AWC-24-45	45°	78	23
AWC-12-30	30°	30	8	AWC-15-30	30°	40	9	AWC-18-30	30°	45	10	AWC-24-30	30°	60	14

All weights in catalog are conveyor weights only. Accessories, crating, etc., are not included.



INSIDE RADIUS	
Overall Width	Inside Radius
12"	36"
15"	33"
18"	30"
24"	36"

• STANDARD SPECIFICATIONS

WIDTHS—12 in., 15 in., 18 in., & 24 in. overall.

FRAME—2 1/2 in. deep x 1 in. flange x 12 ga. powder painted formed steel or 3/8 in. heat-treated aluminum channel with bolt-in cross members.

COUPLINGS—Butt Couplings on Both Ends.

CURVES—Curves have 48 in. outside radius on 12 in., 15 in., 18 in. widths and 60 in. outside radius on 24 in. width.

WHEELS—1 15/16 in. O.D. ball bearings run in hardened raceway with life-time lubrication. Corrosion resistant aluminum or zinc-coated steel.

AXLES—3/4 in. dia., threaded one end with locknut.

CAPACITY—Same per foot capacity as straight sections. See charts on previous page.

