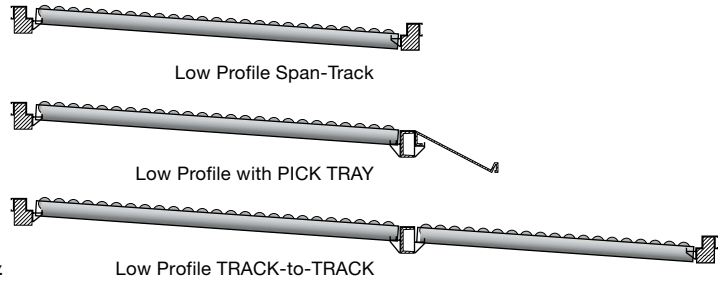


Span-Track, manufactured by Unex, is available in three models: High Profile, Low Profile and Deck Span-Track. This guide is for the Low Profile model. It shows how to install Low Profile sections of Span-Track into pallet rack (PAGE 1). Pick Tray and "Track-to-Track" installation instructions are on PAGE 2.

High Profile and Deck Span-Track installation instructions are available separately.



INSTALLATION SPAN-TRACK®

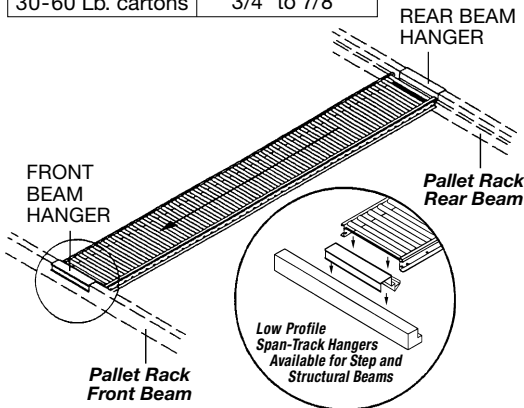
LOW PROFILE

Low Profile Span-Track installs between pallet rack beams. For each type of carton install the first level of track following the instructions below and test for pitch before installing additional levels.

1 SET BEAMS

Set front pallet rack beam to desired discharge elevation. Set rear beam at higher elevation for flow (see chart).

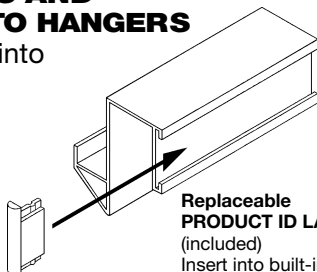
PRODUCT	PITCH PER FOOT
Totes	3/4" to 7/8"
1-10 Lb. cartons	7/8" to 1-1/8"
10-30 Lb. cartons	7/8" to 1"
30-60 Lb. cartons	3/4" to 7/8"



2 ADD LABELS AND END CAPS TO HANGERS

Slip ID Labels into slots and snap on End Caps.

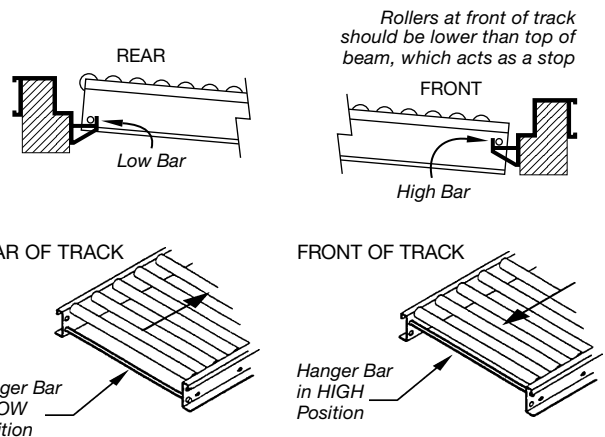
END CAPS (included)
2 per hanger, add to sides of label holder.



Replaceable PRODUCT ID LABELS (included)
Insert into built-in label holders of hangers.

3 ADD HANGERS & TRACK

Place one set of hangers on front & rear beams – do not force or hammer hangers onto beams. Note that front of track has a high hanger bar and rear of track has a low hanger bar (see below). Place track in position on hangers.



4 TEST PITCH

Test installed track section for product flow to determine if rear beam needs readjustment for effective pitch.

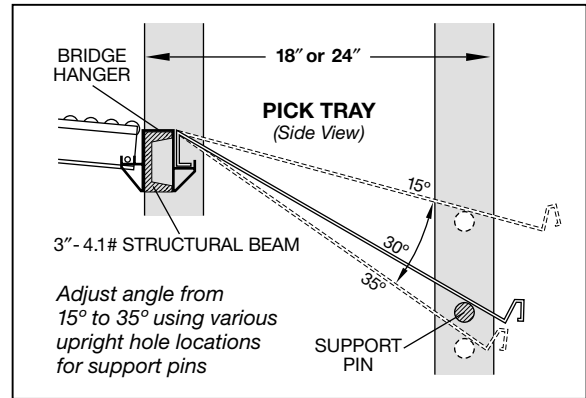
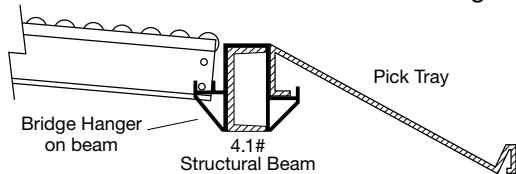
IMPORTANT: Track section to be tested should be loaded and allowed to sit for 24 hours. Then remove cartons at pick face and check resulting flow. This is the most reliable way to ensure proper flow for your particular products and storage environment.

INSTALLATION SPAN-TRACK®

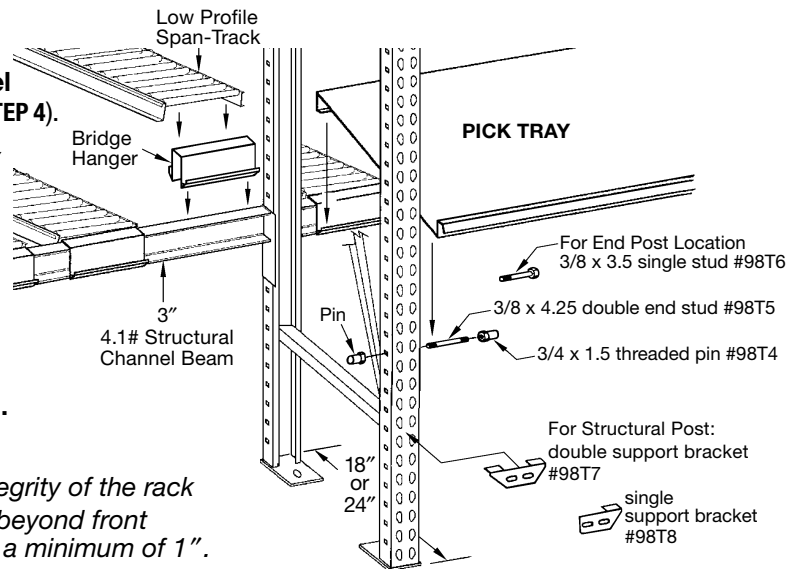
LOW PROFILE with PICK TRAY

The full width Pick Tray requires an 18" or 24" pallet rack upright or post extension of an upright. Rack framework must match pick tray sizes of 18" or 24" deep.

- 1 SET BEAMS & PLACE BRIDGE HANGER**
See Low Profile PAGE 1– STEP 1 for setting beams. Place Bridge Hanger on a 3"- 4.1# structural beam (infinite adjustable not required). Place standard hanger on rear beam. Do not hammer or force hangers.



- 2 ADD TRACK**
Place Span-Track section in back lips of Bridge Hanger as shown. End roller must not touch hanger. **Install and test one level of track for pitch** (See Low Profile PAGE 1– STEP 4).



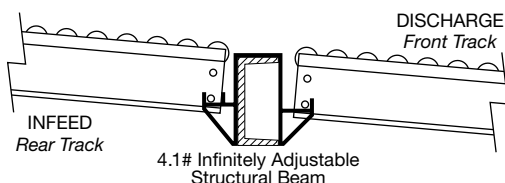
- 3 SET SUPPORT PINS & ADD TRAY**
Mount support "pins" through side holes of front upright for desired Pick Tray angle (see drawing). Insert back edge of Pick Tray into the line of Bridge Hangers as shown. Underside (flat portion) of Pick Tray is supported at front by "pins".
NOTE: Top-heavy products may require shallower angle than indicated in diagram.

- Pick Tray is 1" narrower than bay width
- Pick Tray does not affect the structural integrity of the rack
- In standard application Pick Tray extends beyond front upright post by a maximum of 3-3/4" and a minimum of 1".

INSTALLATION SPAN-TRACK®

LOW PROFILE "TRACK-TO-TRACK"

Place Bridge Hanger onto intermediate beam as shown. **Beam must be a 3", infinitely adjustable, 4.1# structural beam.** Adjust for constant pitch on both sides of beam. Failure to do this can cause hang-ups at the transition point.



Rear track mounts in back lip assuring end roller does not touch hanger. Front & rear pallet rack beams may be of any standard type using standard Span-Track hangers.

