

GENERAL INSTRUCTIONS

- 1.) BE SURE TO USE A LOCKWASHER UNDER EVERY BOLT HEAD WHEN THE INSTRUCTIONS SPECIFY.
- 2.) WOOD SCREWS FOR ATTACHING RISER SHELF SUPPORTS TO A WOOD BENCH TOP ARE NOT SUPPLIED BY LYON. CUSTOMER IS TO SUPPLY No. 14 x 1" ROUND HEAD WOOD SCREWS FOR THIS PURPOSE.

ASSEMBLY INSTRUCTIONS FOR STANDARD STEEL WORK BENCH

OPERATION No.1

- 1.) LAY THE BENCH TOP UPSIDE DOWN ON TWO STRIPS OF WOOD TO RAISE IT OFF THE FLOOR.
- 2.) BOLT AN ATTACHMENT CHANNEL TO EACH END OF THE BENCH TOP WITH THREE No.3 BOLTS. REFER TO DETAILS No.1 AND No.2.

OPERATION No.2

- 1.) SET A BENCH LEG IN POSITION AT EACH END OF THE BENCH TOP AND BOLT IT TO THE RETURN FLANGES OF THE TOP WITH No.2 BOLTS AS SHOWN IN DETAIL No.1. BE SURE TO PLACE A LOCKWASHER UNDER THE HEAD OF EACH BOLT. DRAW NUTS UP TIGHT.
- 2.) ANCHOR TO WALL USING A SUITABLE ANCHOR. (SEE CHART ON OPPOSITE SIDE)

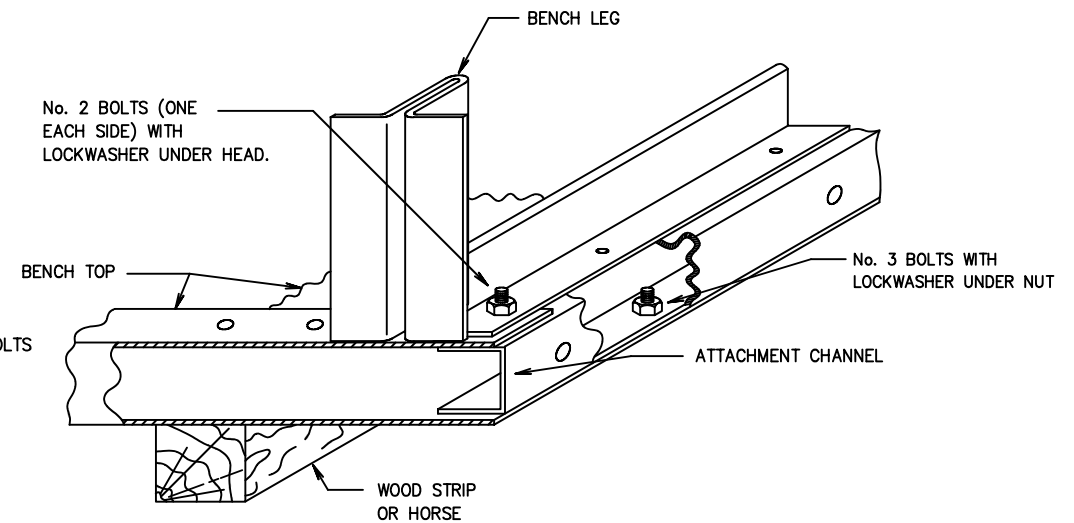
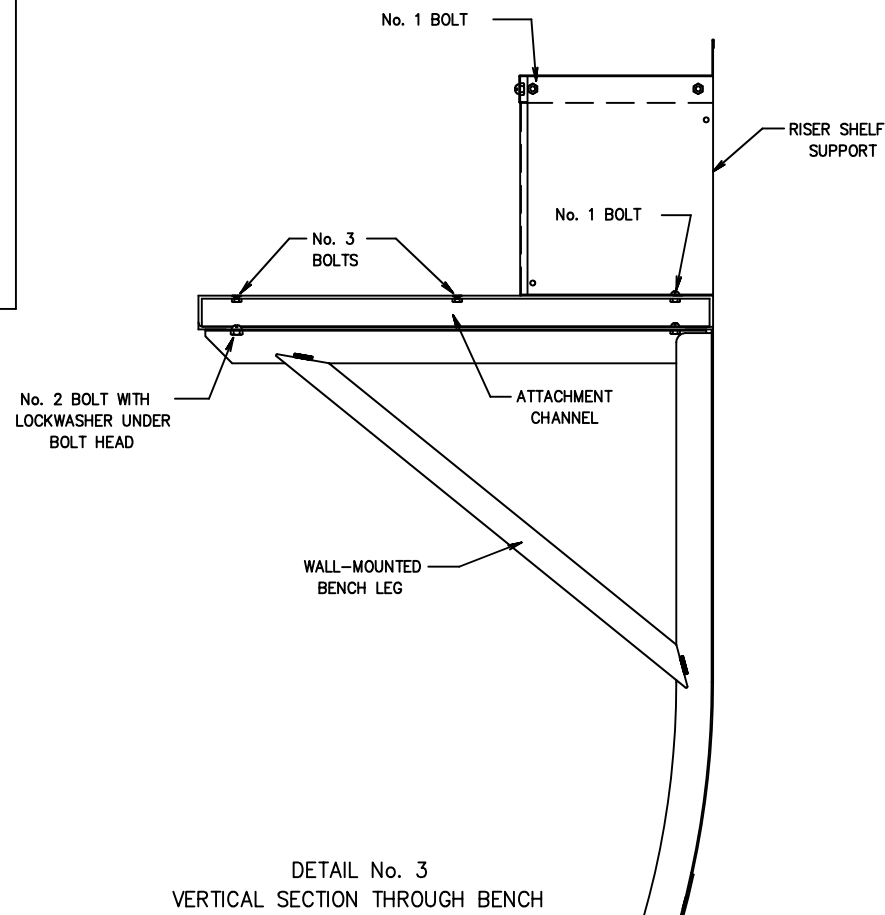
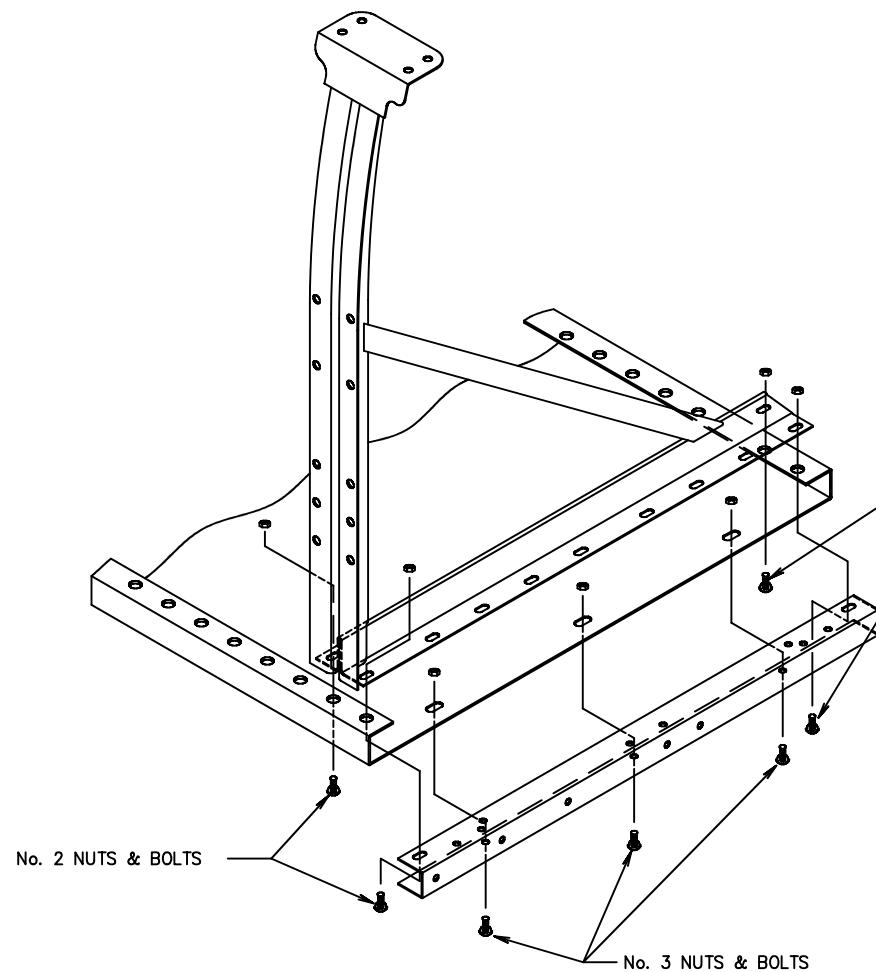
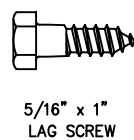
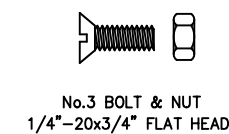
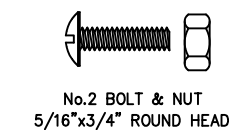
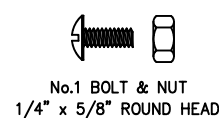
ACCESSORIES FOR WALL-MOUNTED BENCH LEGS

BENCH RISER

- 1.) BOLT A RISER SUPPORT TO THE BENCH TOP (AT THE REAR CORNERS) WITH ONE No.1 BOLT. REMOVE THE No.3 BOLT IF ONE HAS BEEN INSTALLED. REFER TO DETAIL No.3.
- 2.) BOLT THE RISER SHELF TO THE RISER SHELF SUPPORTS, USING THREE No.1 BOLTS AT EACH END.
- 3.) BOLT A RISER SUPPORT BRACE TO THE RISER SHELF AND THE RISER SHELF SUPPORT AT EACH END USING No.1 BOLTS.

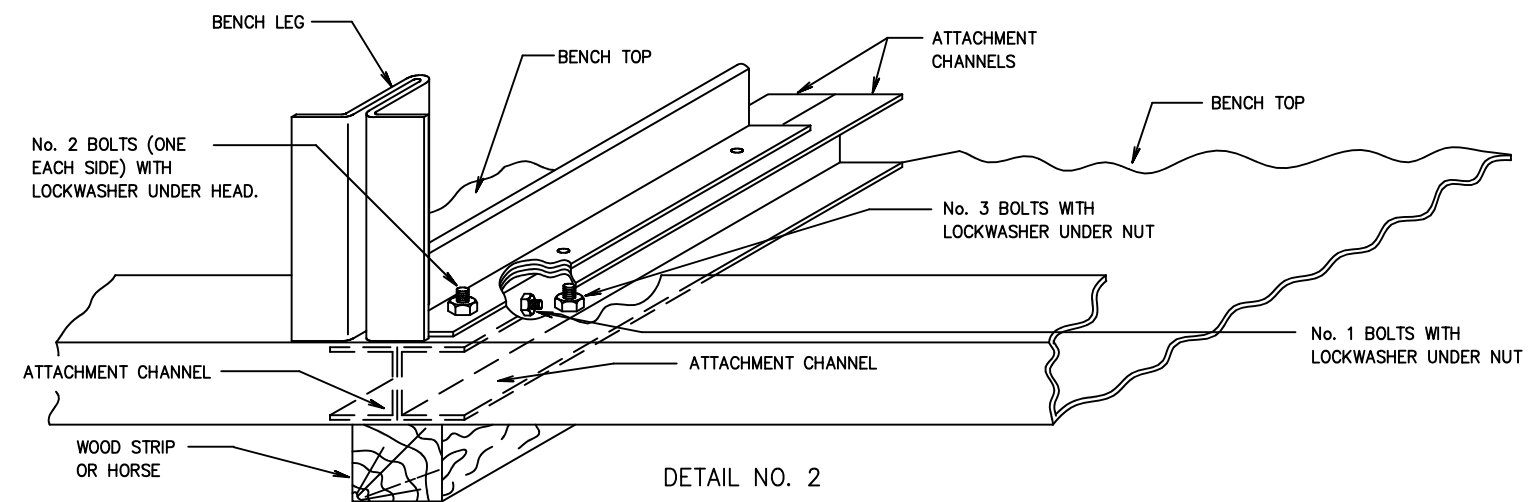
BENCH DRAWERS

- 1.) FOLLOW ASSEMBLY INSTRUCTIOS No. 10645-BA INCLUDED WITH EACH BENCH DRAWER PACKAGE.



DETAIL NO. 1

SHOWING ATTACHMENT OF BENCH LEG AND ATTACHMENT CHANNEL TO A STEEL BENCH TOP, WITH THE ATTACHMENT CHANNEL FLUSH WITH THE END OF THE STEEL BENCH TOP



DETAIL NO. 2

SHOWING ATTACHMENT OF A BENCH LEG AND ATTACHMENT CHANNELS AT JOINT BETWEEN TWO STEEL BENCH TOPS

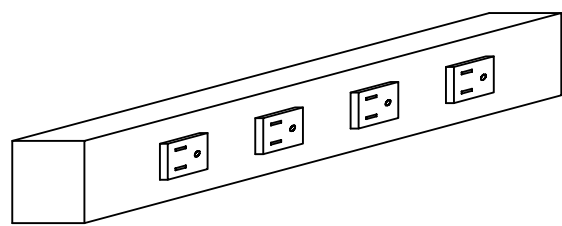
ASSEMBLY INSTRUCTIONS FOR
WALL-MOUNTED BENCH LEGS

LYON LYON WORKSPACE PRODUCTS, INC.
P.O. BOX 671 AURORA, IL 60507

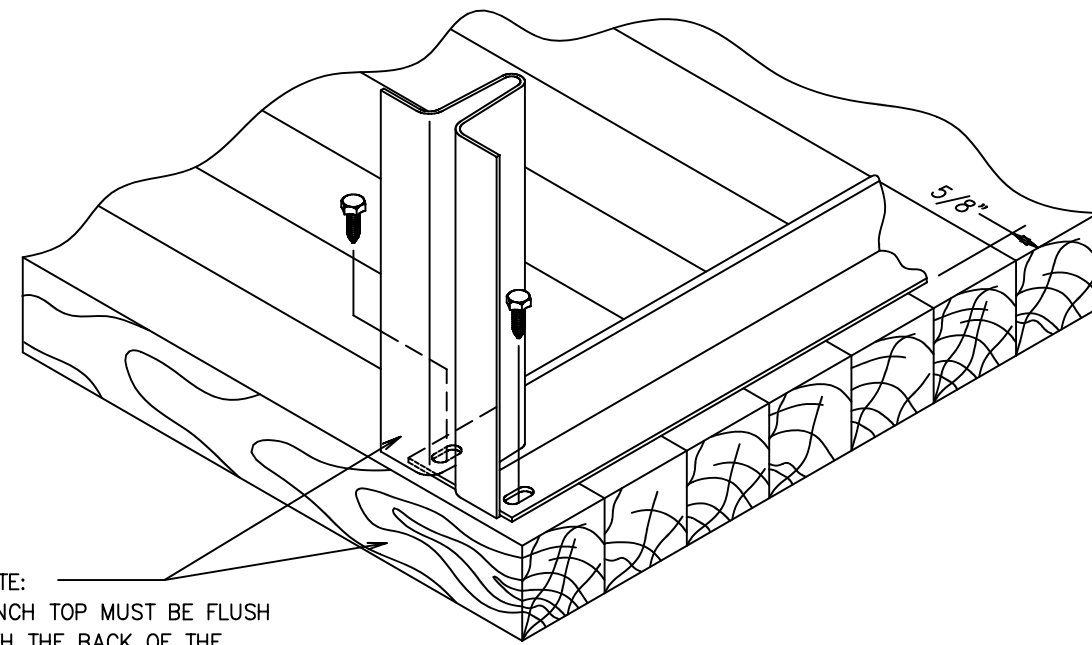
REVISIONS
RELEASED
8-3-94
ADDED NOTE
12-15-94

5918-CA

CONTINUED ON BACK
SIDE OF THIS SHEET



ELECTRICAL OUTLET STRIP
LOCATION OPTIONAL, MOUNTING
HARDWARE NOT SUPPLIED BY LYON

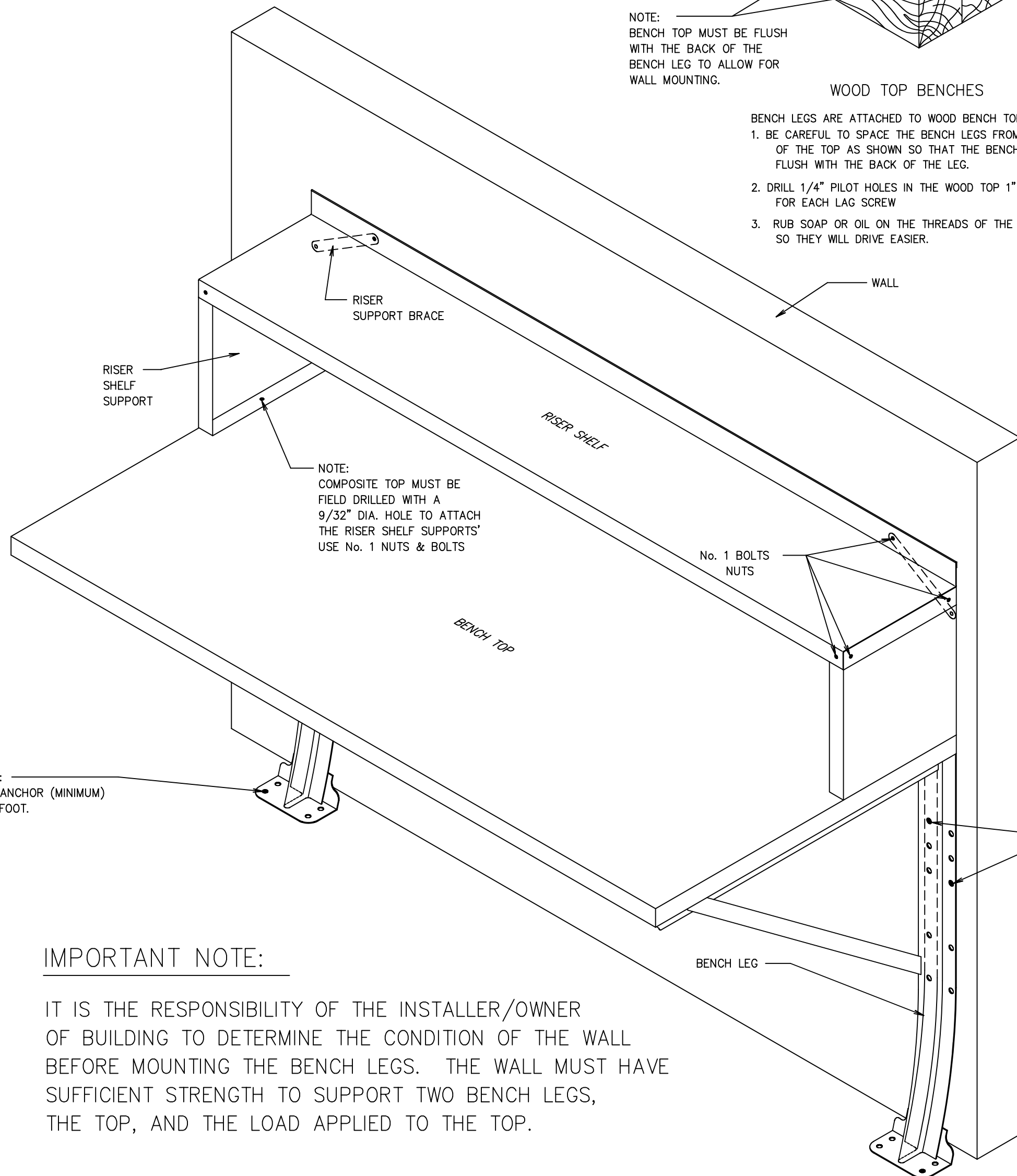


NOTE:
BENCH TOP MUST BE FLUSH
WITH THE BACK OF THE
BENCH LEG TO ALLOW FOR
WALL MOUNTING.

WOOD TOP BENCHES

BENCH LEGS ARE ATTACHED TO WOOD BENCH TOPS AS SHOWN.

1. BE CAREFUL TO SPACE THE BENCH LEGS FROM THE EDGE OF THE TOP AS SHOWN SO THAT THE BENCH TOP IS FLUSH WITH THE BACK OF THE LEG.
2. DRILL 1/4" PILOT HOLES IN THE WOOD TOP 1" DEEP FOR EACH LAG SCREW
3. RUB SOAP OR OIL ON THE THREADS OF THE LAG SCREWS SO THEY WILL DRIVE EASIER.



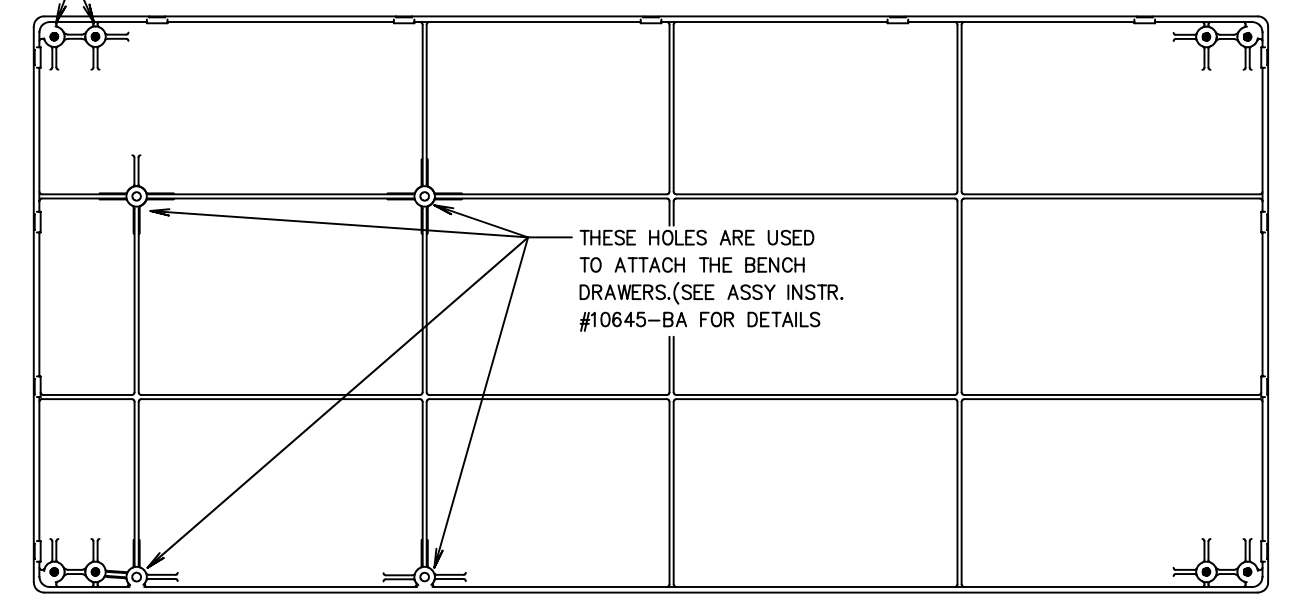
NOTE:
COMPOSITE TOP MUST BE
FIELD DRILLED WITH A
9/32" DIA. HOLE TO ATTACH
THE RISER SHELF SUPPORTS'
USE No. 1 NUTS & BOLTS

TWO ANCHORS REQUIRED
AS SHOWN. TO BE ANCHORED
TO WALL WITH A SUITABLE
ANCHOR BASED ON WALL
CONSTRUCTION & TYPE
OF LOADING.

IMPORTANT NOTE:

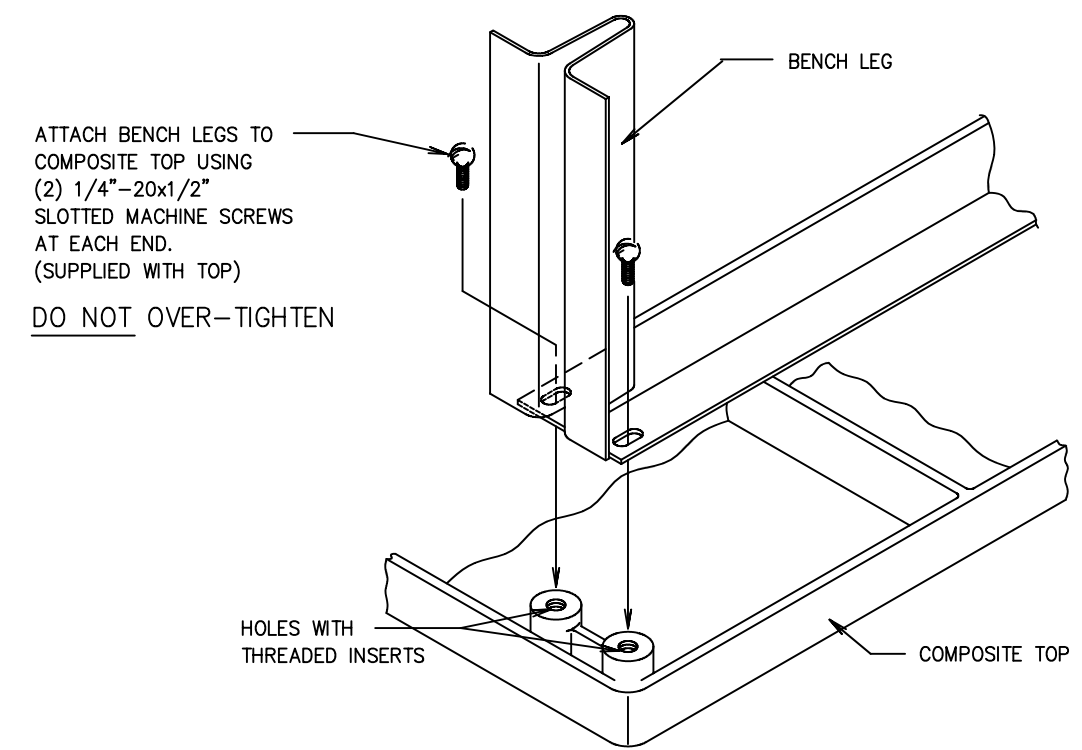
IT IS THE RESPONSIBILITY OF THE INSTALLER/OWNER OF BUILDING TO DETERMINE THE CONDITION OF THE WALL BEFORE MOUNTING THE BENCH LEGS. THE WALL MUST HAVE SUFFICIENT STRENGTH TO SUPPORT TWO BENCH LEGS, THE TOP, AND THE LOAD APPLIED TO THE TOP.

HOLES IN CORNERS
ARE USED TO ATTACH
THE BENCH LEGS TO
THE TOP.



BOTTOM VIEW OF BENCH TOP

THESE HOLES ARE USED
TO ATTACH THE BENCH
DRAWERS.(SEE ASSY INSTR.
#10645-BA FOR DETAILS



ATTACH BENCH LEGS TO
COMPOSITE TOP USING
(2) 1/4"-20x1/2"
SLOTTED MACHINE SCREWS
AT EACH END.
(SUPPLIED WITH TOP)

DO NOT OVER-TIGHTEN

HOLES WITH
THREADED INSERTS

ATTACHMENT OF BENCH LEGS
TO COMPOSITE TOP

RECOMMENDED ANCHORING METHODS

(HARDWARE NOT FURNISHED BY LYON)

ANCHORS FOR MASONRY:	MIN. PULL OUT VALUE IN LBS.	ANCHORS FOR WOOD:	MIN. PULL OUT VALUE IN LBS.
-3/16" SPRING WING TOGGLE BOLT	-----200	-.216" (#12) WOOD SCREWS	
-9/64" DIA. HAMMER-IN DRIVE PINS		1" PENETRATION	-----120
3/4" PENETRATION	-----400	1 1/2" PENETRATION	-----180
-3/16" x 7/8" NAIL DRIVE ANCHORS	-----500	-.242" (#14) WOOD SCREWS	
-1/4" SPRING WING TOGGLE BOLT	-----650	1 PENETRATION	-----135
-RAWPLUGS & #8 SHT. METAL SCREWS		1 1/2" PENETRATION	-----202
1" PENETRATION	-----1190	-1/4" DIA. LAG BOLT	
-EXPANSION SCREWS FOR #10-24 SCREWS	-----1340	1 PENETRATION	-----185
MIN. LENGTH 5/8"		1 1/2" PENETRATION	-----277
-1/4" x 1 1/8" ONE PIECE ANCHOR BOLT	-----1650	-5/16" DIA. LAG BOLT	
		1 PENETRATION	-----220
		1 1/2" PENETRATION	-----330

POWER ACTUATED ANCHORS:

-9/64" DRIVE PIN	
3/4" PENETRATION	-----315
-5/32" DRIVE PIN	
1" PENETRATION	-----415