

Panel Mount Option

PN 151099

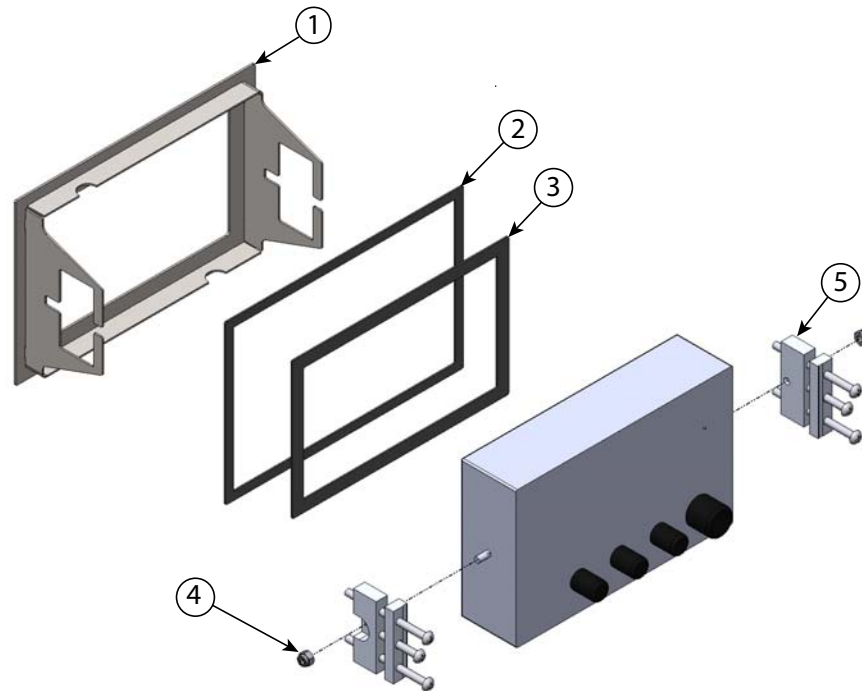


Figure 1. Panel Mount Kit PN (151099)

Item No.	Part No.	Description	Qty
1	158033	Panel Mount Bezel Bracket without gasket	1
2	52946	Gasket, Exterior Panel Mount	1
3	52947	Gasket, Interior Panel Mount	1
4	162913	Lock nut, M6 x 1	2
5	166164	Clamp Assembly	2
NS	53412	Template	1
NS	158130	Manual	1

Use the following procedure to install the panel mount option:



Note *If the seal is installed properly, it should be dust tight. However it is not designed for washdown applications.*

1. Use the cutout template to make a 9.8" W x 6.3" H (249 mm W x 160 mm H) cutout in the panel. Ensure cutout is far enough from panel edge to accommodate bezel: panel mount bezel dimensions are 10.5" W x 7.0" H (267 mm W x 178 mm H).
2. If attached, remove the tilt stand from the indicator enclosure.



Figure 2. Remove Tilt Stand if Installed

3. Peel adhesive backing from the bezel gaskets, than press bezel into the panel cutout.

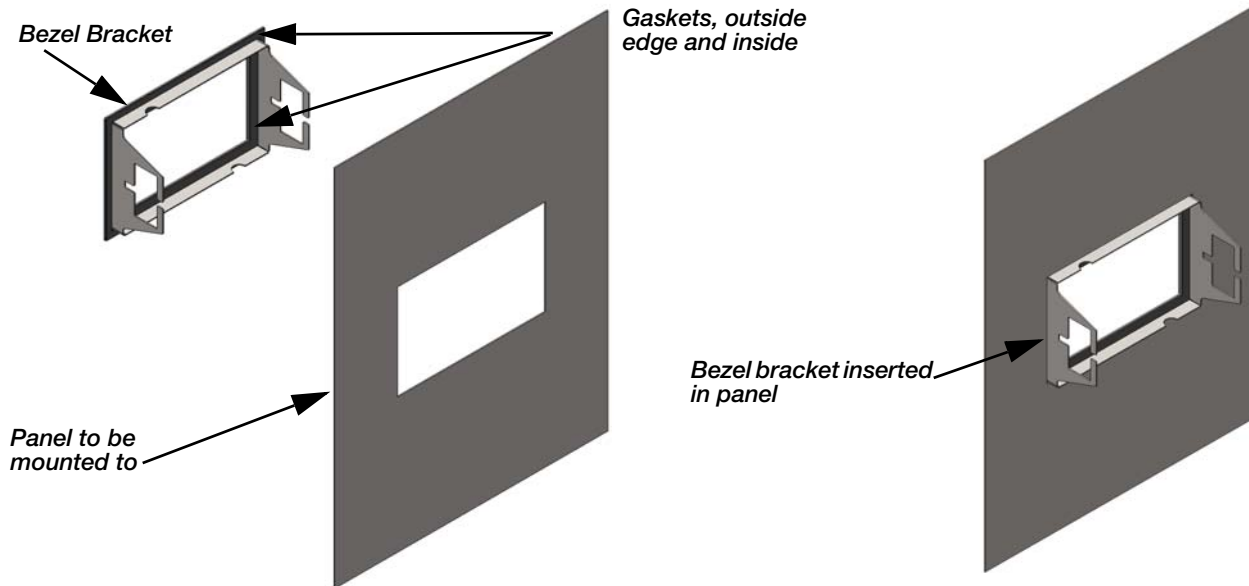


Figure 3. Insert Bezel Bracket

4. Follow the [480 Legend Series Installation Manual, PN 119201](#) to install all cabling and the back panel of the indicator.
5. Insert the indicator into the panel mount bezel from the inside of the panel. Align the mounting studs to the slot in the bracket.
6. Place one clamp assembly over the mounting stud on one side of the indicator.
7. Install one M6 x 1 lock nut on the mounting stud, tighten only until the locking feature is engaged and the nut is not allowed to rotate off the stud. The clamp assembly will be able to rotate freely on the stud. Do not over tighten, this contact must slide when the clamp is applied in Step 8.

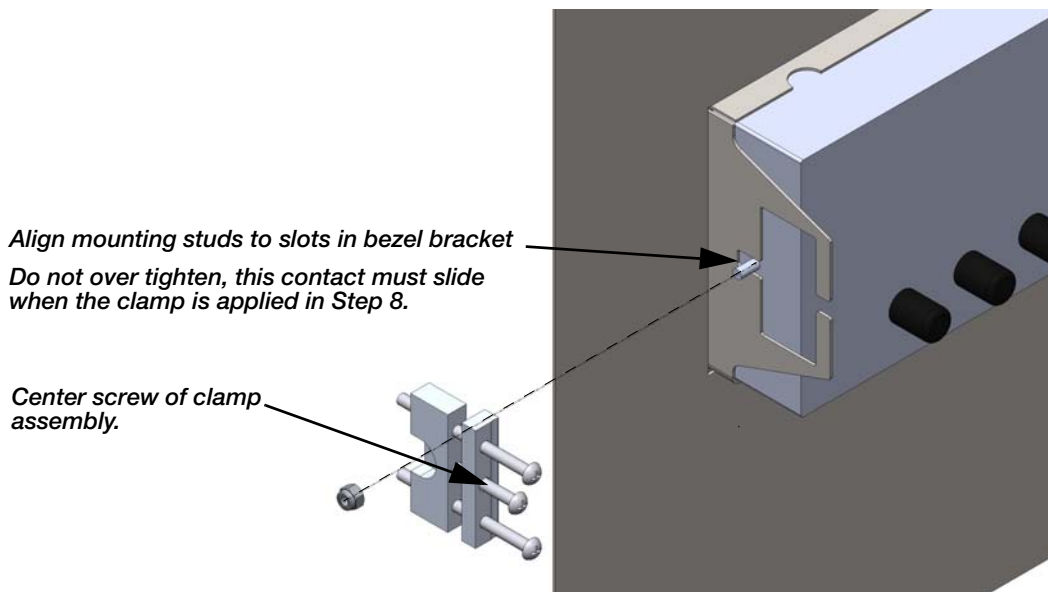


Figure 4. Install Indicator

8. Tighten the center screw of the clamp assembly as shown in Figure 4, until the indicator is pressed securely against the inner bezel gasket.
9. Tighten the outer screws of the clamp assembly until the bezel is held loosely against the panel.
10. Place the other clamp assembly over the remaining mounting stud on the indicator.
11. Secure with the remaining M6 x 1 lock nut (Do not tighten the nut against the clamp assembly, see Step 7).

12. Tighten the center screw of the clamp assembly until the indicator is pressed securely against the inner bezel gasket.

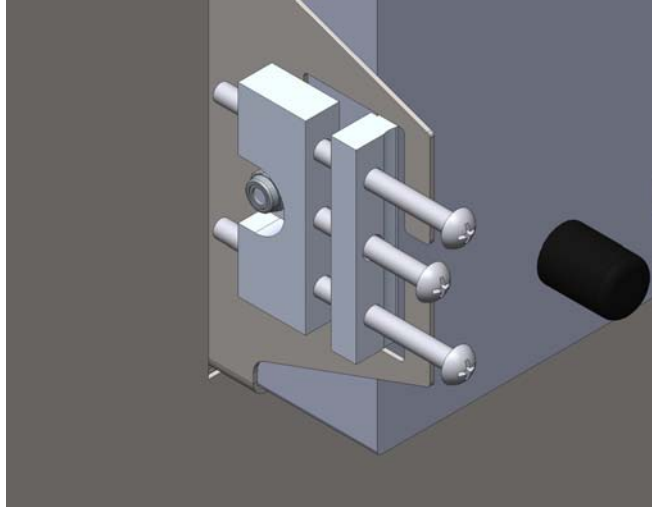


Figure 5. Tighten Clamp Assembly

13. Tighten the outer screws of both clamp assemblies until the front bezel is held securely against the front surface of the panel.

To Perform Maintenance on the 480 Legend Series Indicator

1. Loosen the outer screws on one clamp assembly to relieve pressure on the center screw.
2. Loosen the center screw so that the clamp assembly can be pulled out of the way of the back panel of the indicator. There is no need to completely remove the clamp assembly.
3. Remove the back panel of the indicator and perform the required maintenance as indicated by the 480 Legend Series manual.
4. Tighten the center screw of the clamp assembly, engaging the clamp bar in the bezel bracket as shown, until the indicator is pressed securely against the inner bezel gasket.
5. Tighten the outer screws of the clamp assembly until the front bezel is held securely against the front surface of the panel.

See the [480 Legend Series Installation Manual, PN 119201](#), for more information about installation procedures and requirements.



To be the best by every measure®

© Rice Lake Weighing Systems Specifications subject to change without notice.
Rice Lake Weighing Systems is an ISO 9001 registered company.

230 W. Coleman St. • Rice Lake, WI 54868 • USA

U.S. 800-472-6703 • Canada/Mexico 800-321-6703 • International 715-234-9171 • Europe +31 (0)26 472 1319

www.ricelake.com www.ricelake.mx www.ricelake.eu www.ricelake.co.in m.ricelake.com