

# Gravity Roller Gravity Roller Conveyor

(1-3/8 in. Dia. x 18 Ga. Rollers)

1-3/8 in. dia. Gravity Roller Conveyor is used to carry lightweight packages or when operation requires lightweight sections. Useful in setting up permanent or temporary conveyor lines in warehousing activities, shipping departments, assembly areas, etc. Majority of products will convey with minimum amount of pitch.



- ★ 4 Widths
- ★ 6 Roller Centers
- ★ Powder Painted Steel or Aluminum Frames

## Steel Frame

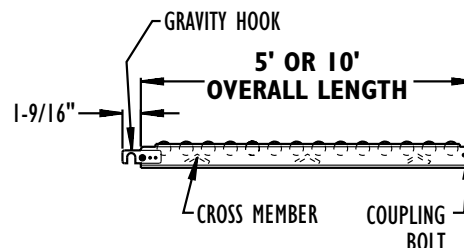
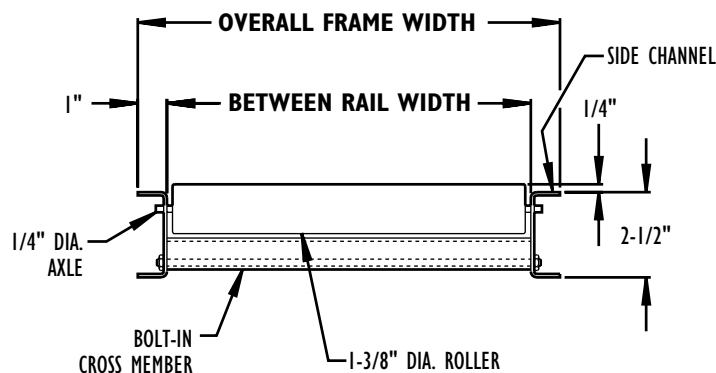
12" Overall Width				15" Overall Width				18" Overall Width				24" Overall Width			
Model No.	Roller Centers	Wgts. (Lbs.)		Model No.	Roller Centers	Wgts. (Lbs.)		Model No.	Roller Centers	Wgts. (Lbs.)		Model No.	Roller Centers	Wgts. (Lbs.)	
		5'	10'			5'	10'			5'	10'			5'	10'
SSR-12-1 1/2	1-1/2"	55	101	SSR-15-1 1/2	1-1/2"	62	112	SSR-18-1 1/2	1-1/2"	72	135	SSR-24-1 1/2	1-1/2"	91	168
SSR-12-3	3"	37	68	SSR-15-3	3"	42	78	SSR-18-3	3"	47	97	SSR-24-3	3"	58	108
SSR-12-4 1/2	4-1/2"	32	58	SSR-15-4 1/2	4-1/2"	33	61	SSR-18-4 1/2	4-1/2"	40	73	SSR-24-4 1/2	4-1/2"	47	88
SSR-12-6	6"	29	52	SSR-15-6	6"	30	55	SSR-18-6	6"	32	63	SSR-24-6	6"	42	78
SSR-12-9	9"	26	47	SSR-15-9	9"	27	50	SSR-18-9	9"	29	57	SSR-24-9	9"	37	69
SSR-12-12	12"	24	44	SSR-15-12	12"	26	46	SSR-18-12	12"	27	52	SSR-24-12	12"	34	63

All weights in catalog are **conveyor weights only**. Accessories, crating, etc., are not included.

## Aluminum Frame

12" Overall Width				15" Overall Width				18" Overall Width				24" Overall Width			
Model No.	Roller Centers	Wgts. (Lbs.)		Model No.	Roller Centers	Wgts. (Lbs.)		Model No.	Roller Centers	Wgts. (Lbs.)		Model No.	Roller Centers	Wgts. (Lbs.)	
		5'	10'			5'	10'			5'	10'			5'	10'
SAR-12-1 1/2	1-1/2"	29	53	SAR-15-1 1/2	1-1/2"	33	56	SAR-18-1 1/2	1-1/2"	38	70	SAR-24-1 1/2	1-1/2"	48	88
SAR-12-3	3"	20	36	SAR-15-3	3"	23	41	SAR-18-3	3"	27	51	SAR-24-3	3"	30	56
SAR-12-4 1/2	4-1/2"	17	30	SAR-15-4 1/2	4-1/2"	18	32	SAR-18-4 1/2	4-1/2"	20	38	SAR-24-4 1/2	4-1/2"	25	46
SAR-12-6	6"	15	27	SAR-15-6	6"	16	29	SAR-18-6	6"	18	33	SAR-24-6	6"	22	41
SAR-12-9	9"	14	24	SAR-15-9	9"	14	26	SAR-18-9	9"	16	30	SAR-24-9	9"	19	36
SAR-12-12	12"	12	23	SAR-15-12	12"	13	24	SAR-18-12	12"	14	27	SAR-24-12	12"	18	33

All weights in catalog are **conveyor weights only**. Accessories, crating, etc., are not included.



LOAD CAPACITY CHART			
Frame Material	Support Centers	Capacity (Lbs.)	
		Frame Capacity (Maximum Distributed Live Load Per Foot)	Roller Capacity (Maximum Load Per Roller)
Steel	5'	270	45
	10'	38	
Aluminum	5'	150	30
	10'	18	

## Standard Specifications

**WIDTHS**—12 in., 15 in., 18 in. and 24 in. overall.

**FRAME**—2-1/2 in. deep x 1 in. flange x 12 ga. powder painted formed steel or 1/8 in. heat-treated aluminum channel with bolt-in cross members.

**COUPLINGS**—Bolt on one end, hooks on opposite end.

**LENGTHS**—5 ft. and 10 ft. straight sections.

**ROLLERS**—1-3/8 in. dia. x 18 ga. galvanized steel or heat-treated aluminum tubing. Spring loaded axle allows roller to be easily removed or inserted.

**AXLES**—1/4 in. dia. round

**CAPACITY**—See Load Capacity Chart this page.

# Gravity Roller

## Gravity Roller Curve Conveyor (1-3/8 in. Dia. x 18 Ga. Rollers)

Gravity Roller Curves add to the versatility of straight conveyors. Curves provide smooth product flow through turns. Curves will convey product with minimum amount of pitch based on weight and size. Guard rails (optional item) may be added for product protection.



- ★ 4 Widths
- ★ Powder Painted Steel or Aluminum Frames
- ★ Gravity Hooks and Bolts Both Ends
- ★ 30°, 45°, 60° and 90°

## STRAIGHT ROLLER CURVE

### Steel Frame

12" Overall Width (36" Outside Radius)			15" Overall Width (39" Outside Radius)			18" Overall Width (42" Outside Radius)			24" Overall Width (48" Outside Radius)		
Model No.	Degree	Wgts. (Lbs.)	Model No.	Degree	Wgts. (Lbs.)	Model No.	Degree	Wgts. (Lbs.)	Model No.	Degree	Wgts. (Lbs.)
SSRC-12-90	90°	70	SSRC-15-90	90°	75	SSRC-18-90	90°	80	SSRC-24-90	90°	141
SSRC-12-60	60°	52	SSRC-15-60	60°	53	SSRC-18-60	60°	62	SSRC-24-60	60°	108
SSRC-12-45	45°	35	SSRC-15-45	45°	40	SSRC-18-45	45°	44	SSRC-24-45	45°	66
SSRC-12-30	30°	18	SSRC-15-30	30°	22	SSRC-18-30	30°	26	SSRC-24-30	30°	42

All weights in catalog are conveyor weights only. Accessories, crating, etc., are not included.

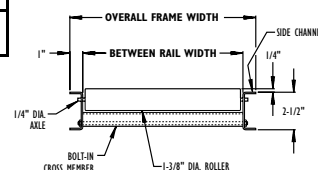
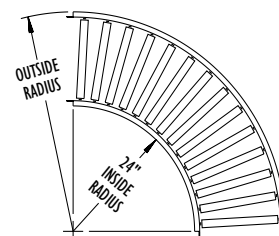
### SPLIT ROLLER

### Aluminum Frame

12" Overall Width (36" Outside Radius)			15" Overall Width (39" Outside Radius)			18" Overall Width (42" Outside Radius)			24" Overall Width (48" Outside Radius)		
Model No.	Degree	Wgts. (Lbs.)	Model No.	Degree	Wgts. (Lbs.)	Model No.	Degree	Wgts. (Lbs.)	Model No.	Degree	Wgts. (Lbs.)
SARC-12-90	90°	28	SARC-15-90	90°	31	SARC-18-90	90°	35	SARC-24-90	90°	50
SARC-12-60	60°	21	SARC-15-60	60°	24	SARC-18-60	60°	27	SARC-24-60	60°	38
SARC-12-45	45°	14	SARC-15-45	45°	17	SARC-18-45	45°	19	SARC-24-45	45°	26
SARC-12-30	30°	8	SARC-15-30	30°	10	SARC-18-30	30°	12	SARC-24-30	30°	14

All weights in catalog are conveyor weights only. Accessories, crating, etc., are not included.

### SPLIT ROLLER



## TAPERED ROLLER CURVE

### Steel Frame

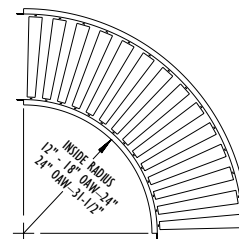
12" Overall Width (36" Outside Radius)			15" Overall Width (39" Outside Radius)			18" Overall Width (42" Outside Radius)			24" Overall Width (55-1/2" Outside Radius)		
Model No.	Degree	Wgts. (Lbs.)	Model No.	Degree	Wgts. (Lbs.)	Model No.	Degree	Wgts. (Lbs.)	Model No.	Degree	Wgts. (Lbs.)
SSRC-12-90T	90°	70	SSRC-15-90T	90°	75	SSRC-18-90T	90°	80	SSRC-24-90T	90°	141
SSRC-12-60T	60°	52	SSRC-15-60T	60°	53	SSRC-18-60T	60°	62	SSRC-24-60T	60°	108
SSRC-12-45T	45°	35	SSRC-15-45T	45°	40	SSRC-18-45T	45°	44	SSRC-24-45T	45°	66
SSRC-12-30T	30°	18	SSRC-15-30T	30°	22	SSRC-18-30T	30°	26	SSRC-24-30T	30°	42

All weights in catalog are conveyor weights only. Accessories, crating, etc., are not included.

### Aluminum Frame

12" Overall Width (36" Outside Radius)			15" Overall Width (39" Outside Radius)			18" Overall Width (42" Outside Radius)			24" Overall Width (55-1/2" Outside Radius)		
Model No.	Degree	Wgts. (Lbs.)	Model No.	Degree	Wgts. (Lbs.)	Model No.	Degree	Wgts. (Lbs.)	Model No.	Degree	Wgts. (Lbs.)
SARC-12-90T	90°	28	SARC-15-90T	90°	31	SARC-18-90T	90°	35	SARC-24-90T	90°	50
SARC-12-60T	60°	21	SARC-15-60T	60°	24	SARC-18-60T	60°	27	SARC-24-60T	60°	38
SARC-12-45T	45°	14	SARC-15-45T	45°	17	SARC-18-45T	45°	19	SARC-24-45T	45°	26
SARC-12-30T	30°	8	SARC-15-30T	30°	10	SARC-18-30T	30°	12	SARC-24-30T	30°	14

All weights in catalog are conveyor weights only. Accessories, crating, etc., are not included.



## Standard Specifications

**WIDTHS**—12 in., 15 in., 18 in., & 24 in. overall.

**FRAME**—2-1/2 in. deep x 1 in. flange x 12 ga. powder painted formed steel or 1/8 in. heat-treated aluminum channel with bolt-in cross members.

**COUPLINGS**—Hooks and bolts on both ends of curve.

**CURVES**—30°, 45°, 60° & 90°.

**ROLLERS**—1-3/8 in. dia. x 18 ga. galvanized steel or heat-treated aluminum tubes or 1-1/2 in. dia. galvanized tapered tubes. Spring loaded axle allows roller to be easily removed or inserted. Aluminum tapered tubes available, contact factory.

**AXLES**—1/4 in. dia. round

**CAPACITY**—Same per foot capacity as straight sections. See charts previous page.

# Gravity Roller

## Gravity Roller Spur Conveyor (1-3/8 in. Dia. x 18 Ga. Rollers)

Gravity Roller Spurs are used to transfer products from one conveying line to another. They can be used in merging or diverging applications. Ideally used where numerous lines must transfer onto a main conveyor line, from work stations or other similar operations.



NOTE: When "Between Rail Widths" exceed 21", double rollers are supplied standard on 90° spurs.

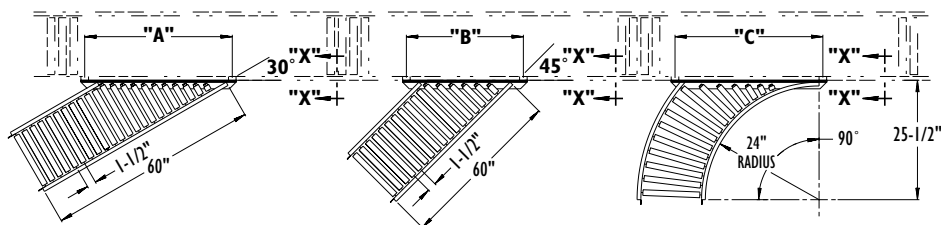
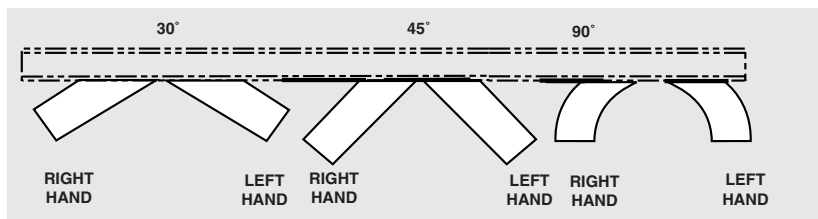
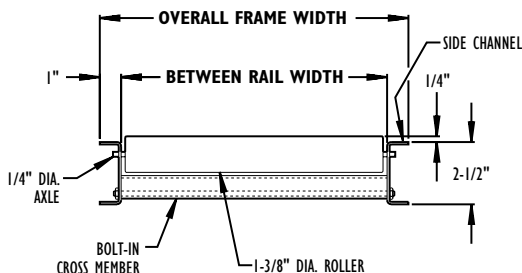
- ★ 4 Widths
- ★ Powder Painted Steel or Aluminum Frames
- ★ Right & Left Hand Units
- ★ Gravity Hooks & Bolts on One End
- ★ 30°, 45°, & 90° Spurs Available

Between Rail Width	Overall Frame Width	Model No.	"A"	Wgt. (Lbs.)	Model No.	"B"	Wgt. (Lbs.)	Model No.	"C"	Wgt. (Lbs.)
10"	12"	SSRS-12-30	24"	61	SSRS-12-45	18"	63	SSRS-12-90	35"	43
13"	15"	SSRS-15-30	30"	70	SSRS-15-45	22"	73	SSRS-15-90	35"	47
16"	18"	SSRS-18-30	36"	75	SSRS-18-45	26"	80	SSRS-18-90	35"	50
22"	24"	SSRS-24-30	48"	87	SSRS-24-45	35"	97	SSRS-24-90	50"	58

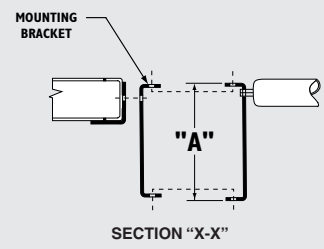
All weights in catalog are **conveyor weights only**. Accessories, crating, etc., are not included.

Between Rail Width	Overall Frame Width	Model No.	"A"	Wgt. (Lbs.)	Model No.	"B"	Wgt. (Lbs.)	Model No.	"C"	Wgt. (Lbs.)
10"	12"	SARS-12-30	24"	40	SARS-12-45	18"	41	SARS-12-90	35"	33
13"	15"	SARS-15-30	30"	46	SARS-15-45	22"	48	SARS-15-90	35"	35
16"	18"	SARS-18-30	36"	50	SARS-18-45	26"	52	SARS-18-90	35"	37
22"	24"	SARS-24-30	48"	58	SARS-24-45	35"	63	SARS-24-90	50"	41

All weights in catalog are **conveyor weights only**. Accessories, crating, etc., are not included.



For Conveyor Channel SIZE "A"	Order By Mounting Bracket No.	Drawing Number
2-1/2" x 12 Ga.	K-1	G571-1
3-1/2" x 10 Ga.	K-2	G571-2
6-1/2" x 12 Ga.	K-4	G571-4



## Standard Specifications

**WIDTHS**—12 in., 15 in., 18 in., & 24 in. overall.

**FRAME**—2-1/2 in. deep x 1 in. flange x 12 ga. powder painted formed steel or 1/8 in. heat-treated aluminum channel with bolt-in cross members.

**COUPLINGS**—Hook and bolt on one end, spur angle on opposite end. Mounting bracket variable, specify.

**SPUR ANGLE**—30°, 45°, 90° right or left hand applications, specify.

**ROLLERS**—1-3/8 in. dia. x 18 ga. galvanized steel tubing. Spring loaded axle allows roller to be easily removed or inserted.

**AXLES**—1/4 in. dia. round

**CAPACITY**—Same per foot capacity as straight sections. See Gravity Roller Conveyor.