

Model PC Portable Parts Conveyor



The Model PC can be used as a portable or permanent parts conveyor. Side guards and cleated belt easily catch small stampings, plastic parts, etc., and carry them to hoppers or drums. Flapper guard prevents parts from falling through conveyor.



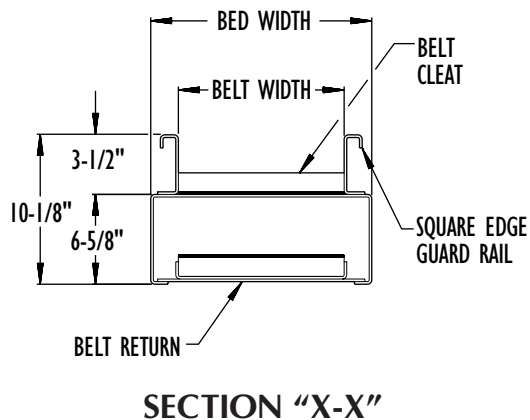
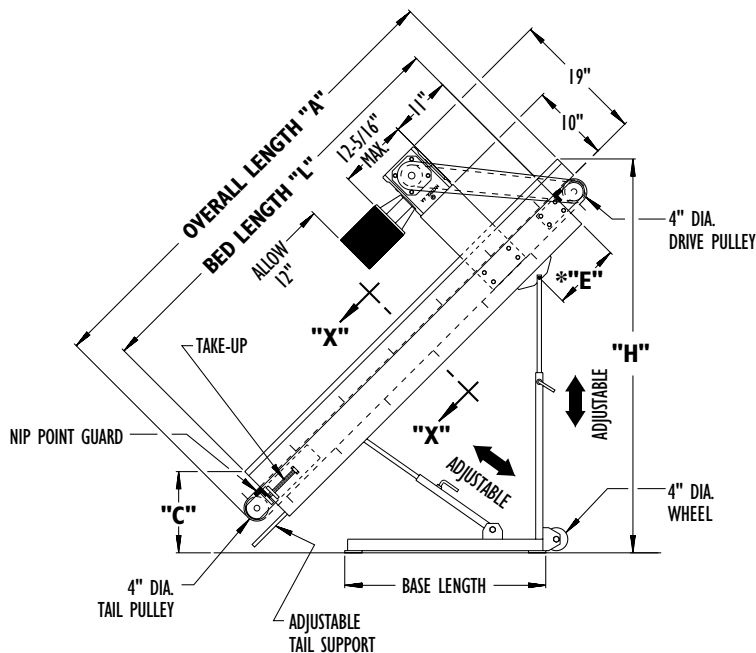
- ★ 8 Belt Widths
- ★ Tough Cleated Belt
- ★ Portable or Permanent
- ★ Overhead Drive
- ★ Formed Edge Guard Rails

SIZE TO ORDER	Belt Width	4"	6"	8"	10"	12"	16"	18"	24"
Overall Length "A"	Bed Width	8"	10"	12"	14"	16"	20"	22"	28"
5'	Weights (Lbs.)	348	416	420	473	477	530	583	635
7'		379	447	451	504	508	563	620	675
9'		410	478	482	535	539	596	657	714
11'		441	509	513	566	570	629	694	753
13'		472	540	544	597	601	662	731	792

All weights in catalog are conveyor weights only.
Accessories, crating, etc., are not included.

Overall Length "A"	Bed Length "L"	Base Length	Minimum Tail		Minimum Drive		Maximum Tail		Maximum Drive		**"E"
			"C"	"H"	"C"	"H"	"C"	"H"			
5'	4'	22"	11"	41-1/2"	10"	56"	25-1/2"	37-1/2"	26"	54-1/2"	11"
7'	6'	34"		51-1/2"		76-1/2"	44-1/2"	44-1/2"	45"	73-1/2"	
9'	8'	46"		64-1/2"		97-1/2"	57-1/2"	57-1/2"	48"	95-1/2"	
11'	10'	58"		74-1/2"		118"	67-1/2"	67-1/2"	55-1/2"	116"	
13'	12'	58"		86-1/2"		139"	67-1/2"	67-1/2"	55-1/2"	128"	

*APPLIES TO PORTABLE BASE ONLY



P O R T A B L E S

Standard Specifications

BELT—3- ply black Nitrile with 1-1/2 in. high molded cleats on 12 in. centers. Clipper unibar lacing.

BED—6-5/8 in. deep x 12 ga powder painted formed steel slider bed. 3-1/2 in. high vertical sides with rolled edge. Standard sections are 4 ft., 6 ft., 8 ft., 10 ft., and 12 ft. long. Longer bed sections are bolted together with splice plates and joint support angles.

PORTABLE BASE SUPPORT—Tubular steel support mounted on 4 in. dia. steel wheels. Adjustable to control conveyor height at top and bottom. Adjustment height can be locked in place with lever. **NOTE: Not available on units longer than 13 ft.**

OVERHEAD END DRIVE—Motor reducer unit mounted 9-1/2 in. above belt (chain guard RH side).

DRIVE PULLEY—4 in. dia. with 1 in. dia. shaft at bearings, machine crowned and fully lagged.

BELT RETURN—4 in. dia. with 1 in. dia. shaft at bearings, machine crowned.

TAKE-UP—Take-ups provided at tail pulley. Provides 4 in. of belt take-up.

BEARINGS—Sealed, pre-lubricated, self-aligning, ball bearings on drive and tail pulleys.

SPEED REDUCTION—Sealed worm gear “C” face speed reducer. No. 50 roller chain to drive pulley.

MOTOR—1/2 HP—230/460V—3 Ph. 60 Hz. Totally Enclosed C-Face.

BELT SPEED—Constant 65 FPM.

CAPACITY—300 lbs. total distributed load at 65 FPM.



FEEDER SHOWN WITH OPTIONAL PC TYPE GUARD RAIL, GRAVITY BRACKET WITH POP-OUT ROLLER AND MS TYPE FLOOR SUPPORTS

Optional Equipment

FLOOR SUPPORTS—MS Type floor supports are available with a wide range of adjustment. Specify top of belt or roller elevation. One support required at every bed joint and ends of conveyor. Holes in feet for lagging to floor. Knee braces recommended above MS-6 support.

BELT—1/2 in. x 1 in. galvanized flat wire mesh belt with 1-1/4 in. high steel angle cleats, spaced every 12 in. Galvanized low carbon steel or stainless steel. 1 in. x 1 in. or 1/2 in. x 1/2 in. mesh available.

BELT SPEED—Other constant and variable speeds. V-belt drive supplied under 17 FPM. **NOTE: Capacity affected with speed change.**

OVERHEAD END DRIVE—Higher than standard clearance above belt, specify.

UNDERSIDE END DRIVE—Motor reducer unit mounted underneath bed. Extends down 11 in. from bottom of bed.

PULLEYS—6 in. tail with 1-3/16 in. dia. shaft at bearings or 8 in. drive with 1-3/16 in. dia. shaft at bearings.

V-BELT DRIVE—V-belt supplied between motor and reducer. Minimum overall drive width 14 in.

O-RING DRIVE CHAIN—With sealed in lubricant (Recommended for applications that do not permit regular lubrication).

HIGHER SIDE GUARDS—6 in., 9 in., or 12 in. high vertical sides in place of standard 3-1/2 in. high. **NOTE: 12 in. high sides require higher than standard overhead or underside drive.**

LOWER POWERED FEEDER—Chain type driven from tail pulley of conveyor. Black friction surface belt. Includes MS-6 support. **NOTE: conveyor tail pulley is used for belt take-up. When belt tension is adjusted, feeder will have to be moved along with the take-up. NOTE: Capacity affected with this option.**

MOTORS—Energy efficient, single phase, other characteristics. 2 HP maximum.

ELECTRICAL CONTROLS—One direction manual start switch. Non-reversing magnetic starters. Push button stations. AC variable frequency drive.