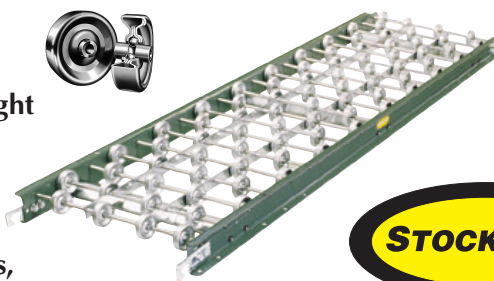


Gravity Wheel

Gravity Skatewheel conveyor is ideally used to convey lightweight packages or when operation requires lightweight sections. Useful in setting up temporary conveyor lines in warehousing activities, shipping departments, assembly areas, etc.



- ★ 4 Widths
- ★ Powder Painted Steel or Aluminum Frames
- ★ Axles on 3 in. or 4 in. Centers

Steel Frames

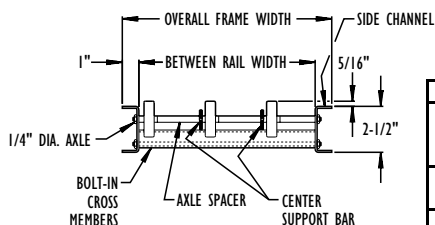
3" AXLE CENTERS								4" AXLE CENTERS							
12" Overall Width				15" Overall Width				12" Overall Width				15" Overall Width			
Model No.	WPF	Wgts. (Lbs.)		Model No.	WPF	Wgts. (Lbs.)		Model No.	WPF	Wgts. (Lbs.)		Model No.	WPF	Wgts. (Lbs.)	
		5'	10'			5'	10'			5'	10'			5'	10'
3SW-12-16	16	43	80	3SW-15-16	16	48	87	4SW-12-12	12	38	70	4SW-15-12	12	43	77
3SW-12-12	12	38	72	3SW-15-12	12	43	78	4SW-12-9	9	34	64	4SW-15-9	9	40	70
3SW-12-10	10	37	68	3SW-15-10	10	40	73	4SW-12-8	8	33	62	4SW-15-8	8	38	67
3SW-12-8	8	35	65	3SW-15-8	8	38	69	4SW-12-6	6	32	60	4SW-15-6	6	37	63
3SW-12-6	6	33	63	3SW-15-6	6	37	68	4SW-12-4	4	30	57	4SW-15-5	5	33	62
18" Overall Width				24" Overall Width				18" Overall Width				24" Overall Width			
Model No.	WPF	Wgts. (Lbs.)		Model No.	WPF	Wgts. (Lbs.)		Model No.	WPF	Wgts. (Lbs.)		Model No.	WPF	Wgts. (Lbs.)	
		5'	10'			5'	10'			5'	10'			5'	10'
3SW-18-20	20	54	98	3SW-24-28	28	65	118	4SW-18-15	15	47	86	4SW-24-21	21	57	102
3SW-18-18	18	49	92	3SW-24-24	24	62	112	4SW-18-14	14	44	82	4SW-24-18	18	55	98
3SW-18-16	16	46	87	3SW-24-20	20	57	103	4SW-18-12	12	41	77	4SW-24-15	15	51	91
3SW-18-14	14	44	83	3SW-24-18	18	55	100	4SW-18-11	11	40	75	4SW-24-14	14	50	90
3SW-18-12	12	41	77	3SW-24-16	16	52	95	4SW-18-9	9	37	69	4SW-24-12	12	47	85

All weights in catalog are conveyor weights only. Accessories, crating, etc., are not included.

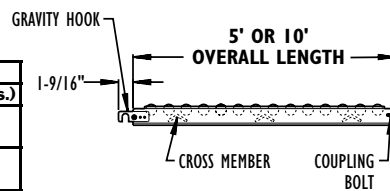
Aluminum Frames

12" Overall Width				15" Overall Width				12" Overall Width				15" Overall Width			
Model No.	WPF	Wgts. (Lbs.)		Model No.	WPF	Wgts. (Lbs.)		Model No.	WPF	Wgts. (Lbs.)		Model No.	WPF	Wgts. (Lbs.)	
		5'	10'			5'	10'			5'	10'			5'	10'
3AW-12-16	16	23	43	3AW-15-16	16	26	41	4AW-12-12	12	22	40	4AW-15-12	12	24	43
3AW-12-12	12	21	39	3AW-15-12	12	23	42	4AW-12-9	9	20	37	4AW-15-9	9	22	40
3AW-12-10	10	20	36	3AW-15-10	10	22	39	4AW-12-8	8	19	36	4AW-15-8	8	21	38
3AW-12-8	8	19	35	3AW-15-8	8	21	37	4AW-12-6	6	18	34	4AW-15-6	6	20	37
3AW-12-6	6	18	33	3AW-15-6	6	20	36	4AW-12-4	4	17	32	4AW-15-5	5	19	35
18" Overall Width				24" Overall Width				18" Overall Width				24" Overall Width			
Model No.	WPF	Wgts. (Lbs.)		Model No.	WPF	Wgts. (Lbs.)		Model No.	WPF	Wgts. (Lbs.)		Model No.	WPF	Wgts. (Lbs.)	
		5'	10'			5'	10'			5'	10'			5'	10'
3AW-18-20	20	28	52	3AW-24-28	28	34	63	4AW-18-15	15	24	44	4AW-24-21	21	29	52
3AW-18-18	18	27	49	3AW-24-24	24	32	59	4AW-18-14	14	23	42	4AW-24-18	18	27	50
3AW-18-16	16	25	46	3AW-24-20	20	30	55	4AW-18-12	12	21	39	4AW-24-15	15	26	47
3AW-18-14	14	24	44	3AW-24-18	18	29	53	4AW-18-11	11	21	38	4AW-24-14	14	25	46
3AW-18-12	12	22	41	3AW-24-16	16	28	51	4AW-18-9	9	19	35	4AW-24-12	12	24	44

All weights in catalog are conveyor weights only. Accessories, crating, etc., are not included.



Frame Material	Support Centers	Frame Capacity (Lbs.)	Wheel Capacity (Lbs.)
		Maximum Distributed Live Load Per Foot	Maximum Load Per Wheel
Steel	5'	270	65
	10'	38	
Aluminum	5'	150	45
	10'	18	



Standard Specifications

WIDTH—12 in., 15 in., 18 in., and 24 in. overall.

FRAME—2-1/2 in. deep x 1 in. flange x 12 ga. powder painted formed steel or 1/8 in. heat-treated aluminum channel with bolt-in cross members.

COUPLINGS—Bolts on one end, hooks on opposite end.

LENGTHS—5 ft. & 10 ft. straight sections.

WHEELS—1-15/16 in. O.D. ball bearings run in hardened raceway with life-time lubrication. Corrosion resistant aluminum or zinc-coated steel.

AXLES—1/4 in. dia., threaded one end with locknut. Spaced on 3 in. or 4 in. centers, specify.

CAPACITY—See Load Capacity Chart this page.

Gravity Wheel Gravity Skatewheel Curve Conveyor

Skatewheel curves add to the versatility of straight conveyors and provide excellent package orientation because of the differential action of wheels. Curves will convey product with minimum amount of pitch based on weight and size.



- ★ 4 Widths
- ★ Powder Painted Steel or Aluminum Frames
- ★ Gravity Hooks & Bolts Both Ends
- ★ 30°, 45°, 60° & 90° Curves

Steel Frames

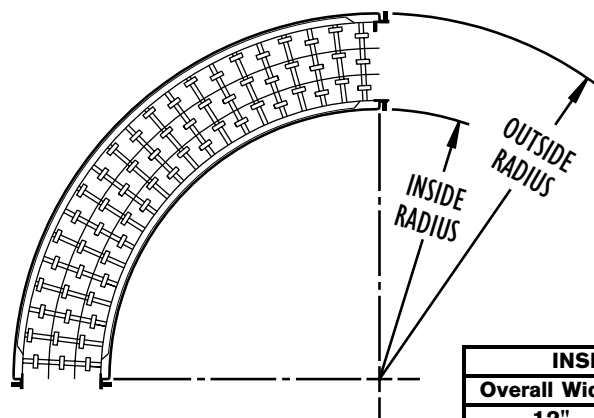
12" Overall Width (48" Outside Radius)				15" Overall Width (48" Outside Radius)				18" Overall Width (48" Outside Radius)				24" Overall Width (60" Outside Radius)			
Model No.	Degree	WPC	Wgts. (Lbs.)	Model No.	Degree	WPC	Wgts. (Lbs.)	Model No.	Degree	WPC	Wgts. (Lbs.)	Model No.	Degree	WPC	Wgts. (Lbs.)
SWC-12-90	90°	63	40	SWC-15-90	90°	84	46	SWC-18-90	90°	94	49	SWC-24-90	90°	156	72
SWC-12-60	60°	42	30	SWC-15-60	60°	56	35	SWC-18-60	60°	63	37	SWC-24-60	60°	102	54
SWC-12-45	45°	30	21	SWC-15-45	45°	40	23	SWC-18-45	45°	45	25	SWC-24-45	45°	78	37
SWC-12-30	30°	30	14	SWC-15-30	30°	40	16	SWC-18-30	30°	45	18	SWC-24-30	30°	60	23

All weights in catalog are conveyor weights only. Accessories, crating, etc., are not included.

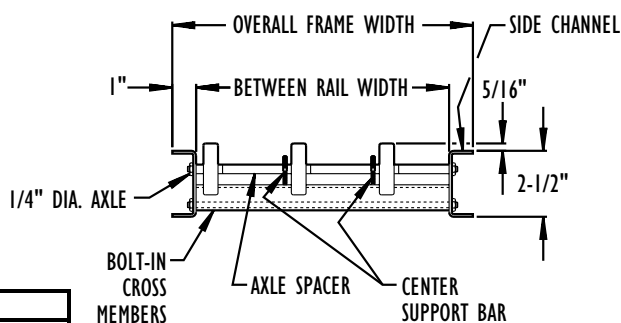
Aluminum Frames

12" Overall Width (48" Outside Radius)				15" Overall Width (48" Outside Radius)				18" Overall Width (48" Outside Radius)				24" Overall Width (60" Outside Radius)			
Model No.	Degree	WPC	Wgts. (Lbs.)	Model No.	Degree	WPC	Wgts. (Lbs.)	Model No.	Degree	WPC	Wgts. (Lbs.)	Model No.	Degree	WPC	Wgts. (Lbs.)
AWC-12-90	90°	63	22	AWC-15-90	90°	84	26	AWC-18-90	90°	94	28	AWC-24-90	90°	156	43
AWC-12-60	60°	42	17	AWC-15-60	60°	56	20	AWC-18-60	60°	63	21	AWC-24-60	60°	102	33
AWC-12-45	45°	30	12	AWC-15-45	45°	40	14	AWC-18-45	45°	45	15	AWC-24-45	45°	78	23
AWC-12-30	30°	30	8	AWC-15-30	30°	40	9	AWC-18-30	30°	45	10	AWC-24-30	30°	60	14

All weights in catalog are conveyor weights only. Accessories, crating, etc., are not included.



INSIDE RADIUS	
Overall Width	Inside Radius
12"	36"
15"	33"
18"	30"
24"	36"



Standard Specifications

WIDTHS—12 in., 15 in., 18 in., & 24 in. overall.

FRAME—2-1/2 in. deep x 1 in. flange x 12 ga. powder painted formed steel or 1/8 in. heat-treated aluminum channel with bolt-in cross members.

COUPLINGS—Hooks and bolts on both ends of curve.

CURVES—Curves have 48 in. outside radius on 12 in., 15 in., 18 in. widths and 60 in. outside radius on 24 in. width.

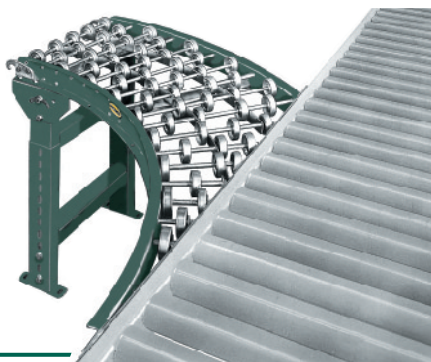
WHEELS—1-15/16 in. O.D. ball bearings run in hardened raceway with life-time lubrication. Corrosion resistant aluminum or zinc-coated steel.

AXLES—1/4 in. dia., threaded one end with locknut.

CAPACITY—Same per foot capacity as straight sections. See charts on previous page.

Gravity Wheel Gravity Skatewheel Spur Conveyor

Gravity Skatewheel Spurs are used to transfer products from one conveying line onto another. They can be used in merging or diverging applications. Ideally used where numerous lines must transfer onto a main conveyor line, from work stations or other similar operations.



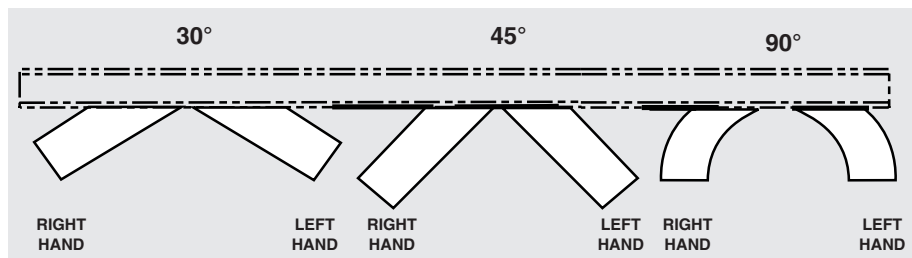
- ★ 4 Widths
- ★ Powder Painted Steel or Aluminum Frames
- ★ Right & Left Hand Units
- ★ Gravity Hooks & Bolts on One End
- ★ 30°, 45° & 90° Spurs

Overall Frame Width	Model No.	30° SPUR			Model No.	45° SPUR			Model No.	90° SPUR				
		"A"	WPS	Wgts. (Lbs.)		"A"	WPS	Wgts. (Lbs.)		"A"	"B"	"R"	WPS	Wgts. (Lbs.)
12"	SWS-12-30	24-3/8"	51	39	SWS-12-45	21"	54	39	SWS-12-90	30"	39 1/8"	36"	46	67
15"	SWS-15-30	30-3/8"	67	43	SWS-15-45	30"	70	43	SWS-15-90	39"	35 5/8"	33"	56	72
18"	SWS-18-30	36-3/8"	71	47	SWS-18-45	30"	77	47	SWS-18-90	39"	32 11/16"	30"	60	77
24"	SWS-24-30	48-3/8"	83	57	SWS-24-45	39"	97	57	SWS-24-90	51"	39 1/2"	36"	94	107

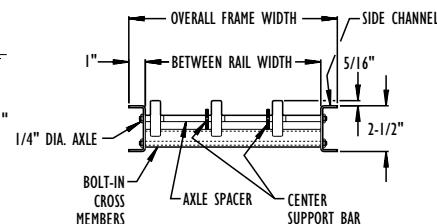
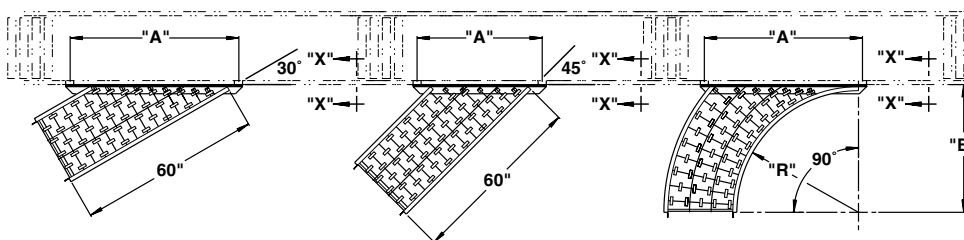
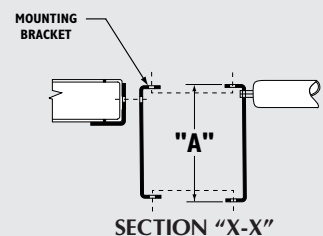
All weights in catalog are **conveyor weights only**. Accessories, crating, etc., are not included.

Overall Frame Width	Model No.	30° SPUR			Model No.	45° SPUR			Model No.	90° SPUR				
		"A"	WPS	Wgts. (Lbs.)		"A"	WPS	Wgts. (Lbs.)		"A"	"B"	"R"	WPS	Wgts. (Lbs.)
12"	AWS-12-30	24-3/8"	51	26	AWS-12-45	21"	54	26	AWS-12-90	30"	39 1/8"	36"	46	45
15"	AWS-15-30	30-3/8"	67	29	AWS-15-45	30"	70	29	AWS-15-90	39"	35 5/8"	33"	56	47
18"	AWS-18-30	36-3/8"	71	32	AWS-18-45	30"	77	32	AWS-18-90	39"	32 11/16"	30"	60	51
24"	AWS-24-30	48-3/8"	83	38	AWS-24-45	39"	97	38	AWS-24-90	51"	39 1/2"	36"	94	71

All weights in catalog are **conveyor weights only**. Accessories, crating, etc., are not included.



For Conveyor Channel SIZE "A"	Order By Mounting Bracket No.	Drawing Number
2-1/2" x 12 Ga.	K-1	G-571-1
3-1/2" x 10 Ga.	K-2	G-571-2
6-1/2" x 12 Ga.	K-4	G-571-4



Standard Specifications

WIDTHS—12 in., 15 in., 18 in., & 24 in.

FRAME—2-1/2 in. deep x 1 in. flange x 12 ga. powder painted formed steel or 1/8 in. heat-treated aluminum channel with bolt-in cross members.

COUPLINGS—Hooks and bolts on one end. Spur angle on opposite end. Mounting bracket available, specify.

SPUR ANGLE—30°, 45° & 90°. Right or left hand applications, specify.

WHEELS—1-15/16 in. O.D. ball bearings run in hardened raceway with life-time lubrication. Corrosion resistant zinc-coated steel.

AXLES—1/4 in. dia., threaded one end with locknut.

CAPACITY—Same per foot capacity as straight sections. See Gravity Skatewheel Conveyor.