



**ADVANCE LIFTS**<sup>®</sup>

---



**ADVANCE DUMPERS**

---

## STANDARD DUMPERS

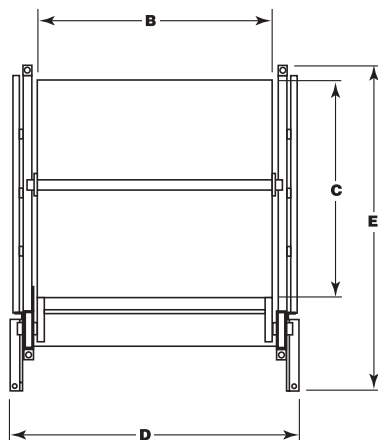
*These dumpers are our most compact design and provide a minimum size footprint. The units tilt approximately 125 degrees. The carriages are designed to hold bins, gaylords or carts and dump their contents which can be as varied as meat, grain, castings, plastic pellets, or the U.S. mail. Although we offer a wide assortment of standard sizes, some applications require highly modified or custom designs which we are happy to provide.*



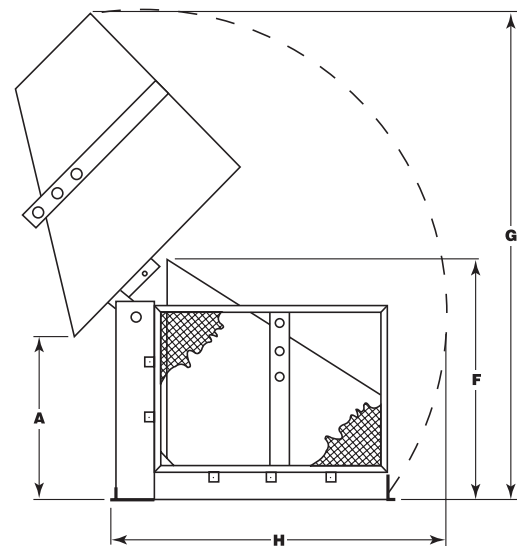
### SPECIAL FEATURES

- ▶ Designed for a minimum size footprint.
- ▶ Adjustable retaining bar.
- ▶ The cylinders are machine grade single acting style.
- ▶ All of the controllers are Underwriter Laboratory approved assemblies.
- ▶ All shafts, axles and pins are hard chrome plated.
- ▶ All bearings are lifetime lubricated.
- ▶ These units are fully primed and finished with baked enamel.

### DIMENSION KEY



Top View



Side View

# STANDARD DUMPERS

## SPECIFICATION TABLE FOR STANDARD DUMPERS

Model	Capacity Lbs.	(A) Dump Height	(BxC) Carriage WxL	(DxE) Overall WxL	Motor H.P.	Speed Sec.	(F) Carriage Height	(G) Arc Height	(H) Arc Length	Approx. Weight
DP-236-4036	2000	36	40 X 36	53 X 56	2	19	53	99	70	1010
DP-236-4048	2000	36	40 X 48	53 X 68	2	19	53	108	79	1045
DP-236-5236	2000	36	52 X 36	65 X 56	2	19	53	99	70	1040
DP-236-5248	2000	36	52 X 48	65 X 68	2	19	53	108	79	1085
DP-248-4036	2000	48	40 X 36	53 X 58	2	25	65	120	79	1020
DP-248-4048	2000	48	40 X 48	53 X 70	2	25	65	128	87	1055
DP-248-5236	2000	48	52 X 36	65 X 58	2	25	65	120	79	1050
DP-248-5248	2000	48	52 X 48	65 X 70	2	25	65	128	87	1095
DP-260-4036	2000	60	40 X 36	53 X 58	2	33	77	140	79	1030
DP-260-4048	2000	60	40 X 48	53 X 70	2	33	77	149	87	1065
DP-260-5236	2000	60	52 X 36	65 X 58	2	33	77	140	79	1060
DP-260-5248	2000	60	52 X 48	65 X 70	2	33	77	149	87	1105
DP-436-4036	4000	36	40 X 36	53 X 58	2	33	53	99	70	1040
DP-436-4048	4000	36	40 X 48	53 X 70	2	33	53	108	79	1075
DP-436-5236	4000	36	52 X 36	65 X 58	2	33	53	99	70	1070
DP-436-5248	4000	36	52 X 48	65 X 70	2	33	53	108	79	1115
DP-448-4036	4000	48	40 X 36	53 X 58	2	37	65	120	79	1050
DP-448-4048	4000	48	40 X 48	53 X 70	2	37	65	128	87	1085
DP-448-5236	4000	48	52 X 36	65 X 58	2	37	65	120	79	1080
DP-448-5248	4000	48	52 X 48	65 X 70	2	37	65	128	87	1125
DP-460-4036	4000	60	40 X 36	53 X 58	2	53	77	140	89	1060
DP-460-4048	4000	60	40 X 48	53 X 70	2	53	77	149	96	1095
DP-460-5236	4000	60	52 X 36	65 X 58	2	53	77	140	89	1090
DP-460-5248	4000	60	52 X 48	65 X 70	2	53	77	149	96	1135
DP-636-4036	6000	36	40 X 36	53 X 58	2	37	53	99	70	1070
DP-636-4048	6000	36	40 X 48	53 X 70	2	37	53	108	79	1105
DP-636-5236	6000	36	52 X 36	65 X 58	2	37	53	99	70	1100
DP-636-5248	6000	36	52 X 48	65 X 70	2	37	53	108	79	1145
DP-648-4036	6000	48	40 X 36	53 X 58	2	53	65	120	79	1080
DP-648-4048	6000	48	40 X 48	53 X 70	2	53	65	128	87	1115
DP-648-5236	6000	48	52 X 36	65 X 58	2	53	65	120	79	1110
DP-648-5248	6000	48	52 X 48	65 X 70	2	53	65	128	87	1155
DP-660-4036	6000	60	40 X 36	53 X 58	2	66	77	140	89	1090
DP-660-4048	6000	60	40 X 48	53 X 70	2	66	77	149	96	1125
DP-660-5236	6000	60	52 X 36	65 X 58	2	66	77	140	89	1120
DP-660-5248	6000	60	52 X 48	65 X 70	2	66	77	149	96	1165

## FEATURE DETAILS



▶ *Standard Power Unit.*



▶ *Cylinder.*



▶ *Adjustable Retaining Bar.*



▶ *Standard Mesh Guard.*

## HEAVY DUTY DUMPERS

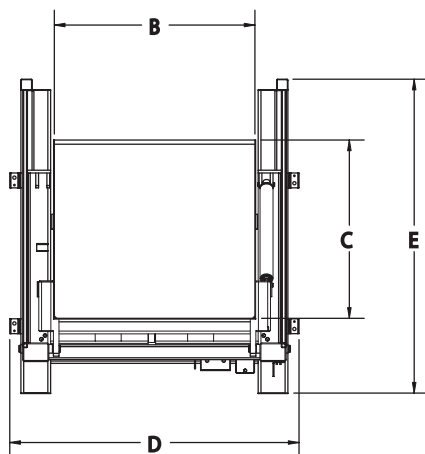
Applications that regularly exceed six (6) cycles per hour and/or more than one (1) shift per day require heavy duty dumpers. If the items being dumped act like a sticky commodity that requires frequent jogging to maintain flow, then heavy duty dumpers are needed. These units are equipped with continuous duty motors and the robust design features extra rugged structural members. These units are ideal for tough applications.



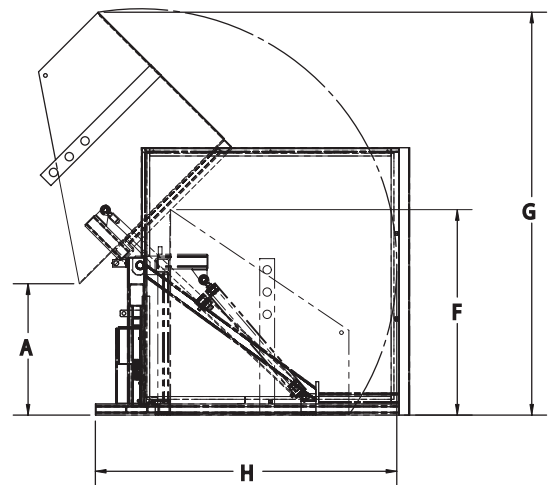
### SPECIAL FEATURES

- ▶ Full 135 degree tilt.
- ▶ Machine grade double acting cylinders with spherical rod ends.
- ▶ Continuous duty motors.
- ▶ Controllers are Underwriter Laboratory approved assemblies.
- ▶ All bearings are lifetime lubricated.

### DIMENSION KEY



Top View



Side View

# HEAVY DUTY DUMPERS

## SPECIFICATION TABLE FOR HEAVY DUTY DUMPERS

Model	Capacity Lbs.	(A) Dump Height	(BxC) Carriage WxL	(DxE) Overall WxL	Motor H.P.	Speed Sec.	(F) Carriage Height	(G) Arc Height	(H) Arc Length	Approx. Weight
HDDP-236-4836	2000	36	48 X 36	72 X 73	5	30	55	98	70	1600
HDDP-436-4836	4000	36	48 X 36	72 X 73	5	36	55	98	70	1800
HDDP-636-4836	6000	36	48 X 36	72 X 73	5	41	55	98	70	1900
HDDP-248-4836	2000	48	48 X 36	72 X 82	5	36	67	117	79	1700
HDDP-448-4836	4000	48	48 X 36	72 X 82	5	40	67	117	79	1900
HDDP-648-4836	6000	48	48 X 36	72 X 82	5	45	67	117	79	2000
HDDP-260-4836	2000	60	48 X 36	72 X 91	5	44	79	126	88	1800
HDDP-460-4836	4000	60	48 X 36	72 X 91	5	48	79	126	88	2000
HDDP-660-4836	6000	60	48 X 36	72 X 91	5	53	79	126	88	2100
HDDP-236-4848	2000	36	48 X 48	72 X 85	5	30	55	109	81	1700
HDDP-436-4848	4000	36	48 X 48	72 X 85	5	36	55	109	81	1900
HDDP-636-4848	6000	36	48 X 48	72 X 85	5	41	55	109	81	2000
HDDP-248-4848	2000	48	48 X 48	72 X 94	5	36	67	128	90	1800
HDDP-448-4848	4000	48	48 X 48	72 X 94	5	40	67	128	90	2000
HDDP-648-4848	6000	48	48 X 48	72 X 94	5	45	67	128	90	2100
HDDP-260-4848	2000	60	48 X 48	72 X 103	5	44	79	137	99	1900
HDDP-460-4848	4000	60	48 X 48	72 X 103	5	48	79	137	99	2100
HDDP-660-4848	6000	60	48 X 48	72 X 103	5	53	79	137	99	2200
HDDP-236-5448	2000	36	54 X 48	78 X 85	5	30	55	109	81	1800
HDDP-436-5448	4000	36	54 X 48	78 X 85	5	36	55	109	81	2000
HDDP-636-5448	6000	36	54 X 48	78 X 85	5	41	55	109	81	2100
HDDP-248-5448	2000	48	54 X 48	78 X 94	5	36	67	128	90	1900
HDDP-448-5448	4000	48	54 X 48	78 X 94	5	40	67	128	90	2100
HDDP-648-5448	6000	48	54 X 48	78 X 94	5	45	67	128	90	2200
HDDP-260-5448	2000	60	54 X 48	78 X 103	5	44	79	137	99	2000
HDDP-460-5448	4000	60	54 X 48	78 X 103	5	48	79	137	99	2200
HDDP-660-5448	6000	60	54 X 48	78 X 103	5	53	79	137	99	2300

## FEATURE DETAILS



▶ Continuous Duty Power Units.



▶ Optional Chutes & Soft Lips.



▶ Optional Electronic Eye.



▶ Adjustable Retaining Bar.

## HIGH REACH DUMPERS

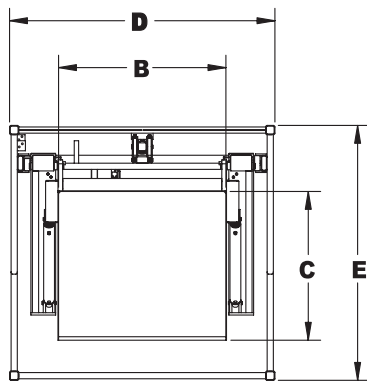
*These units have been designed for applications that require lifting a container to a high elevation and then dumping it. They safely accomplish the function of lifting & dumping in one compact unit. Applications for these units include grinders and other processing equipment with high in-feed locations. High reach dumpers can eliminate the need for long power conveyors and/or mezzanines serviced by lift systems.*



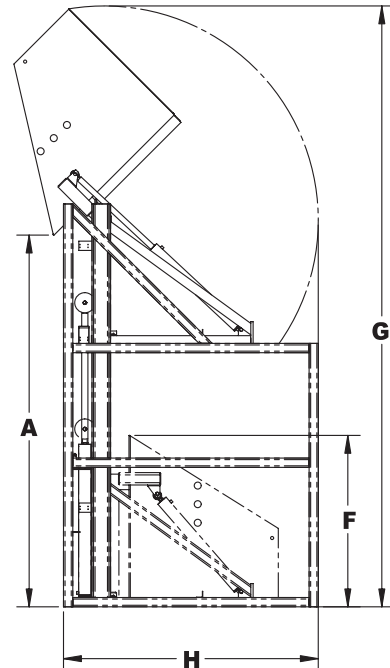
### SPECIAL FEATURES

- ▶ Full 135 degree tilt.
- ▶ Machine grade single acting cylinder with for lifting and double acting cylinders spherical rod ends for tilting.
- ▶ Continuous duty motors.
- ▶ Controllers are Underwriter Laboratory approved assemblies.
- ▶ All bearings are lifetime lubricated.

### DIMENSION KEY



Top View



Side View

# HIGH REACH DUMPERS

## SPECIFICATION TABLE FOR HIGH REACH DUMPERS

Model	Capacity Lbs.	(A) Dump Height	(BxC) Carriage WxL	(DxE) Overall WxL	Motor H.P.	Speed Sec.	(F) Carriage Height	(G) Arc Height	(H) Arc Length	Approx. Weight
HRDP-272-4836	2000	72	48 X 36	79 X 71	5	37	55	138	71	2300
HRDP-472-4836	4000	72	48 X 36	79 X 71	5	37	55	138	71	2600
HRDP-672-4836	6000	72	48 X 36	79 X 71	5	37	55	138	71	3200
HRDP-296-4836	2000	96	48 X 36	79 X 71	5	44	55	162	71	2300
HRDP-496-4836	4000	96	48 X 36	79 X 71	5	44	55	162	71	2600
HRDP-696-4836	6000	96	48 X 36	79 X 71	5	44	55	162	71	3200
HRDP-2120-4836	2000	120	48 X 36	79 X 71	5	51	55	186	71	2400
HRDP-4120-4836	4000	120	48 X 36	79 X 71	5	51	55	186	71	2700
HRDP-6120-4836	6000	120	48 X 36	79 X 71	5	67	55	186	71	3300
HRDP-272-4848	2000	72	48 X 48	79 X 83	5	37	55	146	83	2400
HRDP-472-4848	4000	72	48 X 48	79 X 83	5	37	55	146	83	2700
HRDP-672-4848	6000	72	48 X 48	79 X 83	5	37	55	146	83	3300
HRDP-296-4848	2000	96	48 X 48	79 X 83	5	44	55	170	83	2400
HRDP-496-4848	4000	96	48 X 48	79 X 83	5	44	55	170	83	2700
HRDP-696-4848	6000	96	48 X 48	79 X 83	5	44	55	170	83	3300
HRDP-2120-4848	2000	120	48 X 48	79 X 83	5	51	55	194	83	2500
HRDP-4120-4848	4000	120	48 X 48	79 X 83	5	51	55	194	83	2800
HRDP-6120-4848	6000	120	48 X 48	79 X 83	5	67	55	194	83	3400
HRPD-272-5448	2000	72	54 X 48	85 X 83	5	37	55	146	83	2400
HRPD-472-5448	4000	72	54 X 48	85 X 83	5	37	55	146	83	2700
HRPD-672-5448	6000	72	54 X 48	85 X 83	5	37	55	146	83	3300
HRPD-296-5448	2000	96	54 X 48	85 X 83	5	44	55	170	83	2400
HRPD-496-5448	4000	96	54 X 48	85 X 83	5	44	55	170	83	2700
HRPD-696-5448	6000	96	54 X 48	85 X 83	5	44	55	170	83	3300
HRPD-2120-5448	2000	120	54 X 48	85 X 83	5	51	55	194	83	2500
HRPD-4120-5448	4000	120	54 X 48	85 X 83	5	51	55	194	83	2800
HRPD-6120-5448	6000	120	54 X 48	85 X 83	5	67	55	194	83	3400

For dump heights between standard sizes, add \$250 to the price of the taller unit for engineering charges.

## FEATURE DETAILS



▶ *Continuous Duty Power Units.*



▶ *Optional Chutes & Soft Lips.*



▶ *Standard Electronic Eye.*



▶ *Cable Carrier Enclosures For Traveling Cylinder Hoses.*



*Our state of the art 120,000 square foot building houses all operations including sales, design, manufacturing and shipping.*

**For the period of 2005 & 2006, Advance Lifts shipped 450 large bin dumpers.** This makes us the largest producer of large bin dumpers in the country. This is an important part of our business, not just something that we occasionally dabble in.

**Advance lifts has invested thousands of hours in research and development of large bin dumpers.** The products in this catalog are the result of those engineering efforts, which allows us to offer the best possible value in the industry. These machines have robust designs that achieve optimum cost benefit ratios.

**Special customized designs are our forte.** One off designs to fit customer's unique applications are our favorite kind of work. Because of our extensive library of specials, the engineering time for special designs is minimized, resulting in shorter delivery times.

## **ADVANCE LIFTS WARRANTY**

For a period of one year from date of shipment from the Company's plant, the Company agrees to replace or repair, free of charge, any defective parts, material or workmanship on new equipment. This shall include electrical and hydraulic components.

For a period of ten years or 125,000 cycles (whichever occurs first) from date of shipment from Company's plant, the Company agrees to replace or repair any defective structure.

Company authorization must be obtained prior to the commencement of any work. The Company reserves the right of choice between effecting repairs in the field or paying all freight charges and effecting the repairs at the Company's plant. The Company further reserves the right of final determination in all warranty considerations. Evidence of overloading, abuse or field modification of units without Company approval shall void this warranty. No contingent liabilities will be accepted.

***DISTRIBUTED BY:***



701 S. Kirk Road  
St. Charles, IL 60174  
Ph: 1-800-843-3625  
Fax: 630-584-9405  
[www.advancelifts.com](http://www.advancelifts.com)