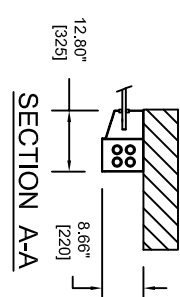
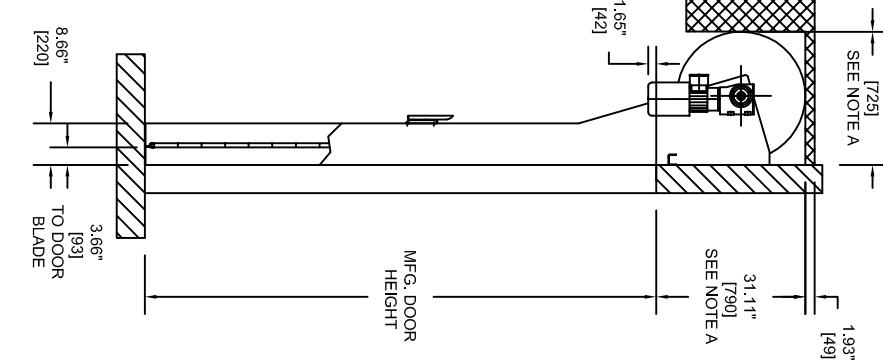
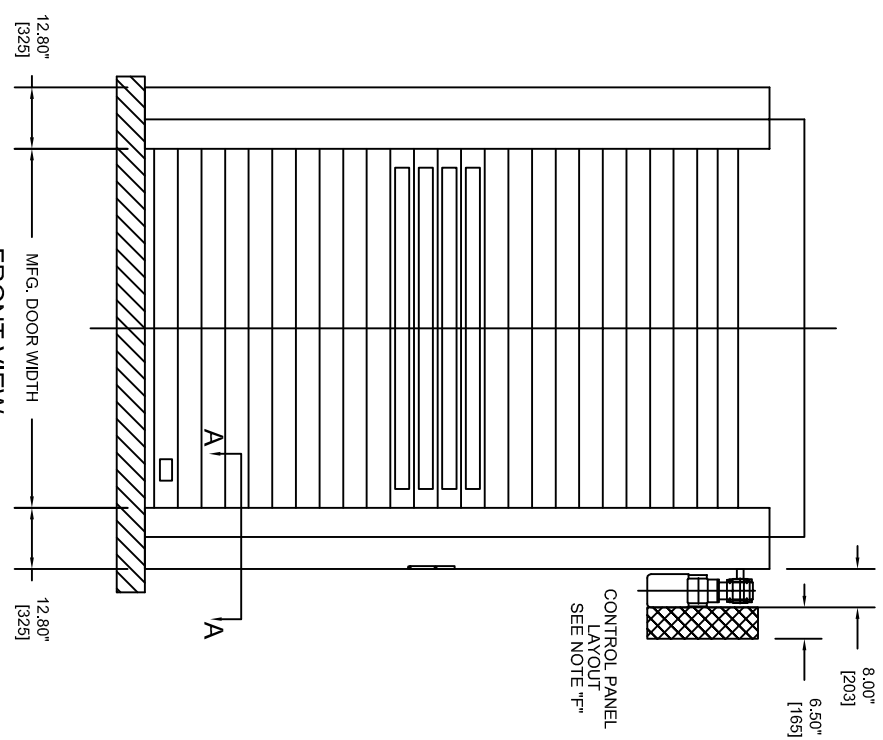
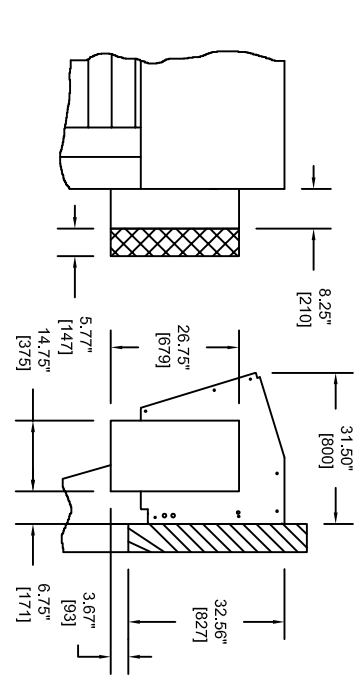


NOTE:
 A. IF MFG. DOOR HEIGHT IS $\leq 10'-5\frac{1}{2}"$ (3188) THEN DIMENSION = 30.12" (765). FOR DOOR WITH FULL ROLL COVER SEE ROLL COVER SPACE REQUIREMENTS DETAIL.
 B. DOORS WITH $DH < 8'-2\frac{1}{2}"$ (2500) AVAILABLE WITH FULL ROLL COVERS ONLY
 C. RH DRIVE SIDE SHOWN. LH OPPOSITE
 D. FOR STANDARD RR3000 WINDOW CONFIG. PLEASE REFER TO WINDOW CONFIGURATION CHART #RR3000-002
 E. WIDTH GAUGE SUPPORT BRACKET ATTACHMENT MAY BE REQUIRED DEPENDING ON DOOR WIDTH.
 F. FOR CONTROL PANEL LAYOUT REFER TO THE FOLLOWING:
 MCC STANDARD = 9470T0008
 MCC WITH COMBI BOX = 9470T0009
 MCC "ALL-IN-ONE" = 9470T0015



SECTION A-A
 = RECOMMENDED CLEARANCES

ROLL & MOTOR COVER SPACE REQ.



OPENING SIZE	W=	H=
MFG. DOOR SIZE	W=	H=
PRIMARY VOLTAGE	208-240	440-480
CONTROL PANEL (PLC / MCC WITH WIRELESS)		575-600
DRIVE SIDE - (RH / LH)		WINDOWS - (YES / NO)
INSULATED PANELS (YES / NO)		POWDER COATED PAINT (RAL# / NO)
DOOR ACTUATORS (QUANTITY)		PUSHBUTTON <901>
		PULL SWITCH <911>
		FLOOR LOOP <930>
		CAR GUARD <950>
		MOTION DETECTOR <925>
		RADIO RECEIVER <925>

COMMENTS:

CUSTOMER:	APPROVED BY:	ALBANY
LOCATION:	APPROVED WITH CHANGES BY:	ASSA ABLOY
SALES/AGENT/DEALER:	DATE:	SCALE = N.T.S.
HEADER HEIGHT CHANGE	05/09/13	JCR
CHANGE		
Change	Date	Name

DESCRIPTION:	ULTRA SECURE APPROVAL
DRAWING NO.:	ULTRA SECURE-001
DESIGNER:	Jon Reitz
DATE:	8/06/2007

ULTRA SECURE CLEARANCE DRAWING
 DW $\leq 16.00'$ & DH $> 9.63'$ [2935]