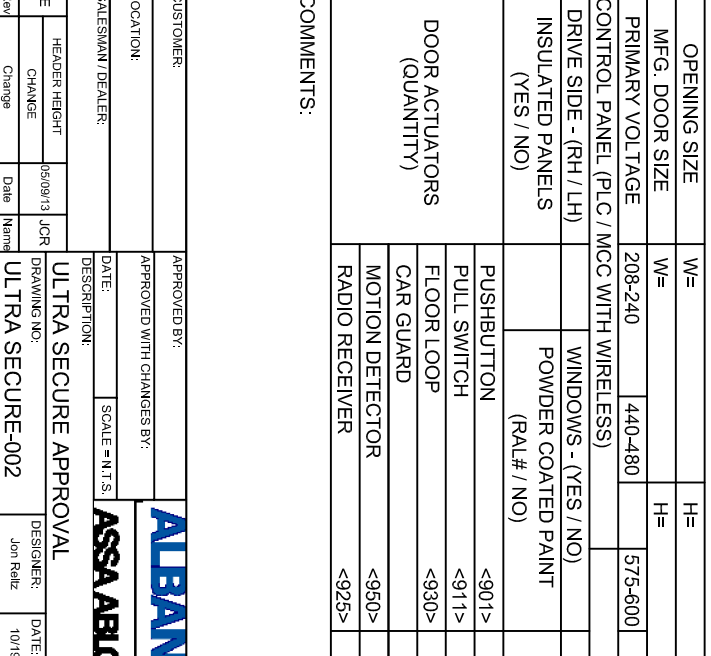
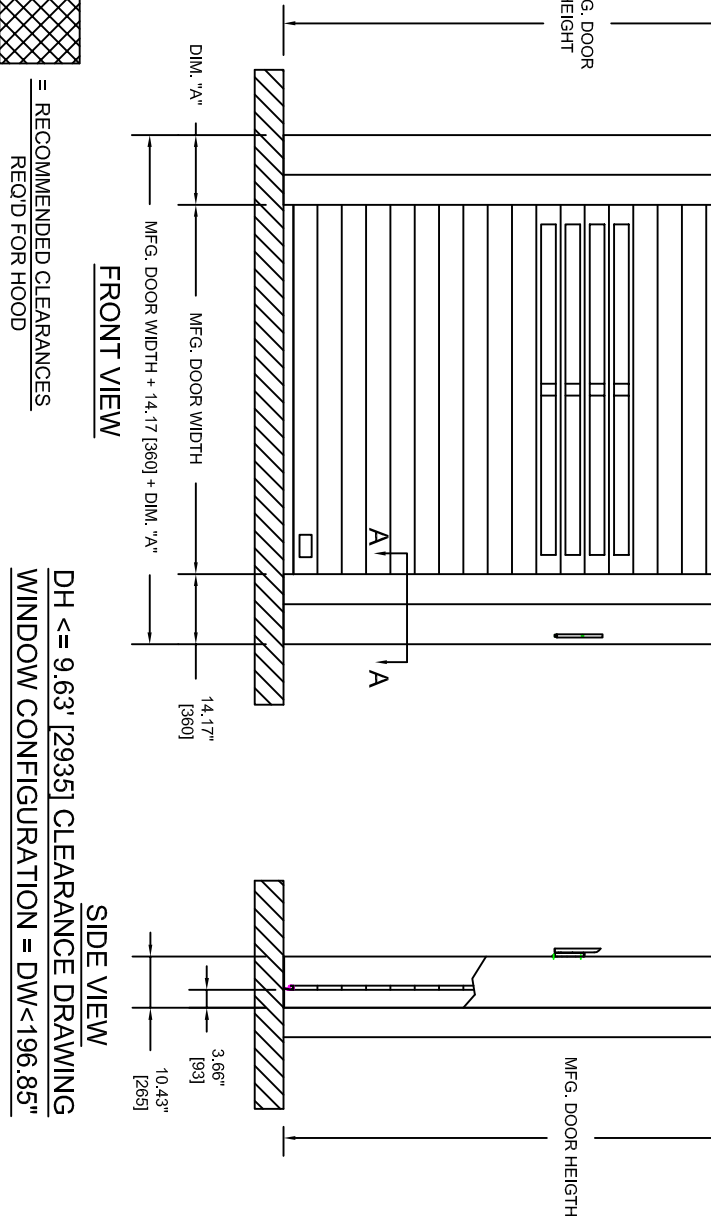
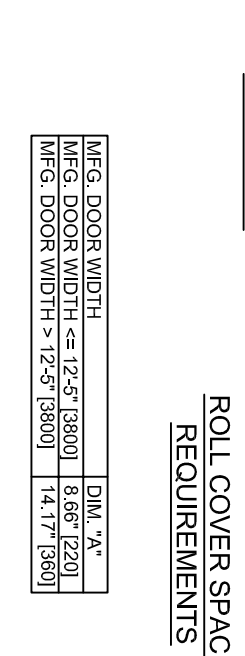
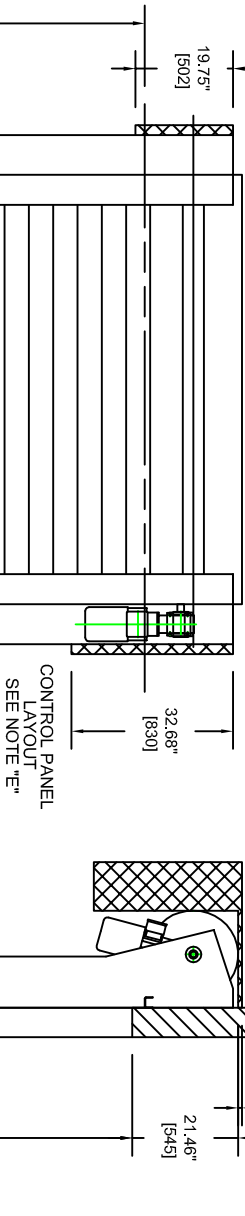
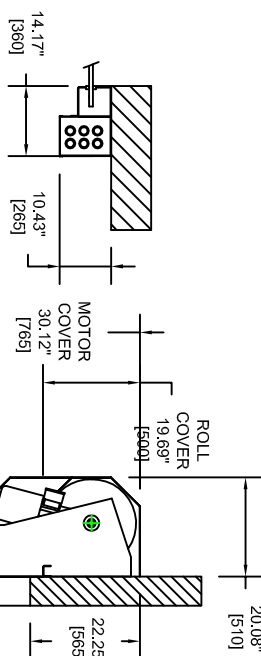


NOTE:  
 A. DOORS WITH DH<8'-2-1/2" [2500] AVAILABLE WITH FULL ROLL COVERS ONLY  
 B. RH DRIVE SIDE SHOWN, LH OPPOSITE  
 C. FOR WINDOW CONFIG. PLEASE REFER TO WINDOW CONFIGURATION CHART #RR3000-002  
 D. WIDTH GAUGE SUPPORT BRACKET ATTACHMENT MAY BE REQUIRED DEPENDING ON DOOR WIDTH.  
 E. FOR CONTROL PANEL LAYOUT REFER TO THE FOLLOWING:  
 MCC STANDARD = 9470T0008  
 MCC WITH COMBI BOX = 9470T0009  
 MCC "ALL-IN-ONE" = 9470T0015



OPENING SIZE		W=	H=
MFG. DOOR SIZE	W=	208-240	H= 575-600
PRIMARY VOLTAGE		440-480	
CONTROL PANEL (PLC / MCC WITH WIRELESS)			
DRIVE SIDE - (RH / LH)		WINDOWS - (YES / NO)	
INSULATED PANELS (YES / NO)		POWDER COATED PAINT (RAL# / NO)	
DOOR ACTUATORS (QUANTITY)		PUSHBUTTON <901>	
		PULL SWITCH <911>	
		FLOOR LOOP <930>	
		CAR GUARD <950>	
		MOTION DETECTOR <925>	
RADIO RECEIVER		<925>	
COMMENTS:			
CUSTOMER:		APPROVED BY:	
LOCATION:		APPROVED WITH CHANGES BY:	
SALESMAN/DEALER:		DATE:	
E		SCALE: N.T.S.	
CHANGE		DATE:	
Change		Name	
ULTRA SECURE APPROVAL		DESIGNER: Jon Reitz	
ULTRA SECURE-002		DATE: 10/19/2012	

RECOMMENDED CLEARANCES  
 REQ'D FOR HOOD

DH <= 9.63' [2935] CLEARANCE DRAWING  
 WINDOW CONFIGURATION = DW < 196.85"

