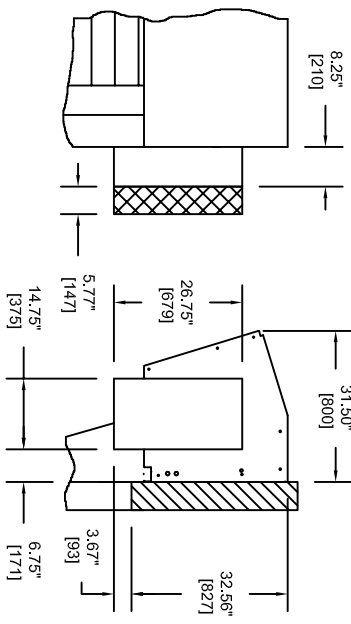
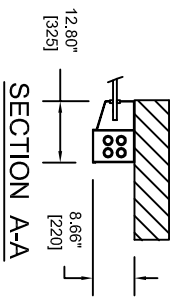
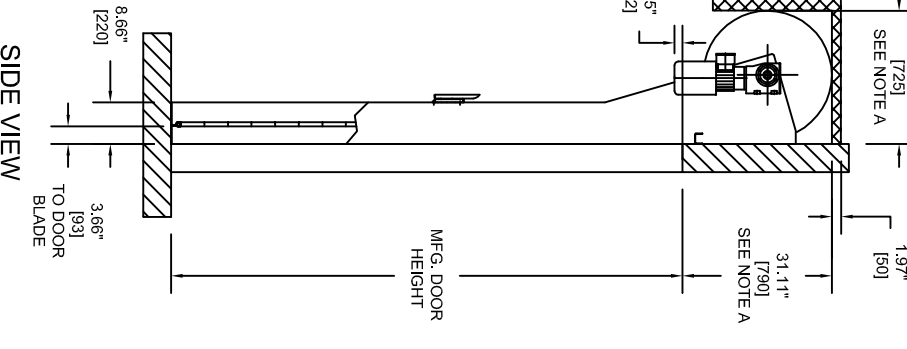


NOTE:
 A. IF MFG. DOOR HEIGHT IS <=10'-5-1/2" (3185) THEN DIMENSION = 30.12" (765). FOR DOOR WITH FULL ROLL COVER SEE ROLL COVER SPACE REQUIREMENTS DETAIL.
 B. DOORS WITH DH<8'-2-1/2" (2500) AVAILABLE WITH FULL ROLL COVERS ONLY
 C. RH DRIVE SIDE SHOWN, LH OPPOSITE
 D. WIDTH GAUGE SUPPORT BRACKET ATTACHMENT MAY BE REQUIRED DEPENDING ON DOOR WIDTH.
 E. FOR CONTROL PANEL LAYOUT REFER TO THE FOLLOWING:
 MCC STANDARD = 9470T0008
 MCC WITH COMBI BOX = 9470T0009
 MCC *ALL-IN-ONE* = 9470T0015



= RECOMMENDED CLEARANCES

OPENING SIZE	W=	H=
MFG. DOOR SIZE	W=	H=
PRIMARY VOLTAGE	208-240	440-480
CONTROL PANEL (PLC / MCC WITH WIRELESS)	YES	POWDER COATED PAINT (RAL# / NO)
WINDOWS - (FULL VISION)	YES	
DRIVE SIDE - (RH / LH)		
DOOR ACTUATORS (QUANTITY)		
	PUSHBUTTON	<901>
	PULL SWITCH	<911>
	FLOOR LOOP	<930>
	CAR GUARD	
	MOTION DETECTOR	<950>
	RADIO RECEIVER	<925>

COMMENTS:

CUSTOMER: APPROVED BY: ALBANY

LOCATION: APPROVED WITH CHANGES BY: ASSA BLOY

SALES/AGENT/DEALER: DATE: SCALE = N.T.S.

DESCRIPTION: ULTRA SECURE FV APPROVAL

DRAWING NO.: ULTRA SECURE-004

DESIGNER: Jon Reitz DATE: 9/12/2012

ULTRA SECURE FULL VISION
 MAX. DOOR SIZE = 16.4' [5000] X 16.18' [4935]