

BALDOR® • **RELIANCE**

Product Information Packet

M3538/35

.5HP, 1740RPM, 3PH, 60HZ, 56, 3511M, TEFC, F1, N

Part Detail							
Revision:	D	Status:	PRD/A	Change #:		Proprietary:	No
Type:	AC	Prod. Type:	3511M	Elec. Spec:	35WGP864	CD Diagram:	CD0005
Enclosure:	TEFC	Mfg Plant:		Mech. Spec:	35A011	Layout:	35LYA011
Frame:	56	Mounting:	F1	Poles:	04	Created Date:	06-01-2011
Base:	RG	Rotation:	R	Insulation:	F	Eff. Date:	07-11-2014
Leads:	9#18					Replaced By:	
Literature:		Elec. Diagram:					

Nameplate NP1256L									
CAT.NO.	M3538/35								
SPEC.	35A011P864G1								
HP	.5								
VOLTS	208-230/460								
AMP	2.42-2.24/1.12								
RPM	1740								
FRAME	56	HZ	60	PH	3				
SER.F.	1.15	CODE	M	DES	B	CLASS	F		
NEMA-NOM-EFF	72	PF	58						
RATING	40C AMB-CONT								
CC			USABLE AT 208V						
DE	6205	ODE	6203						
ENCL	TEFC	SN							

AC Induction Motor Performance Data

Record # 36576 - Typical performance - not guaranteed values

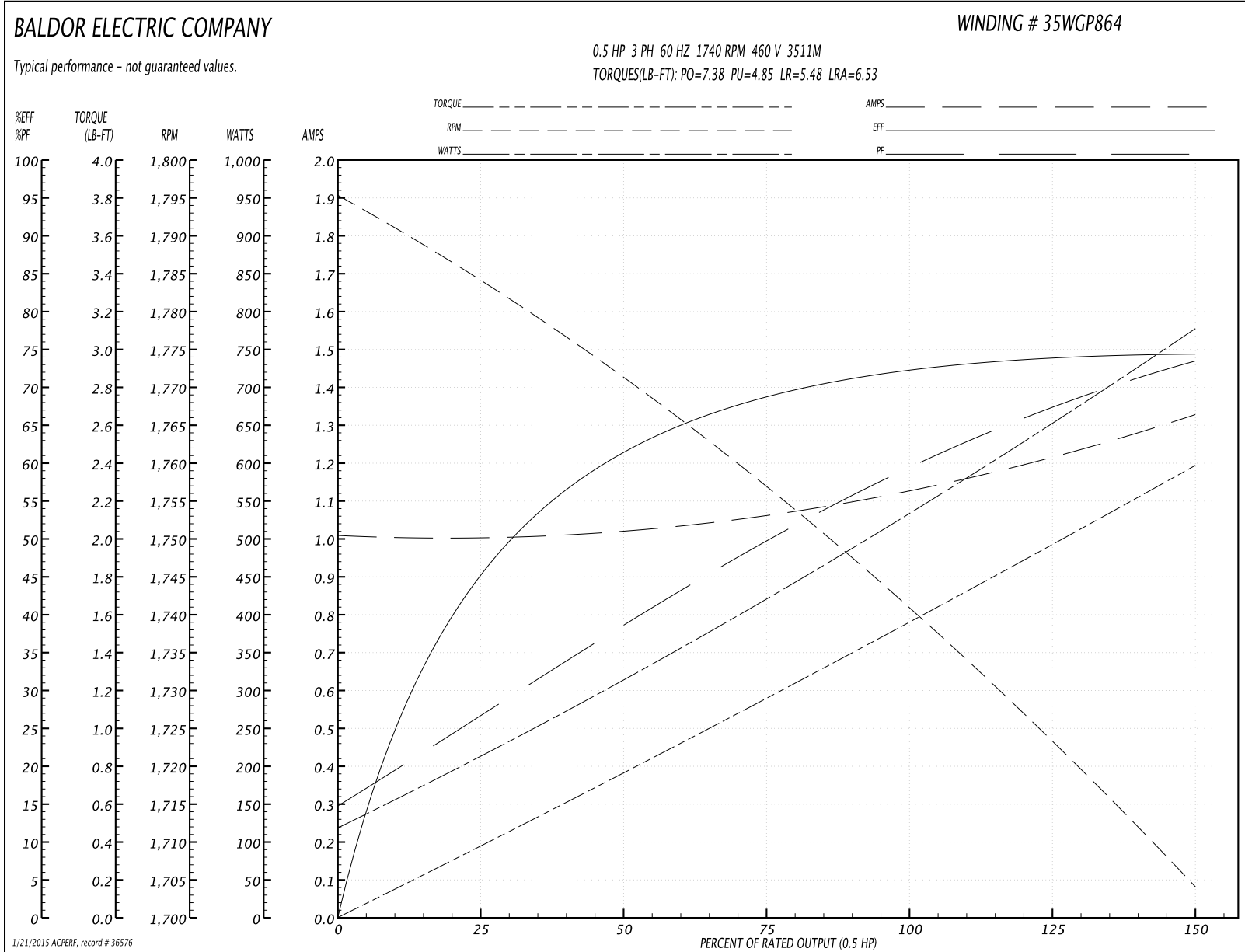
Winding: 35WGP864-R003	Type: 3511M	Enclosure: TEFC
-------------------------------	--------------------	------------------------

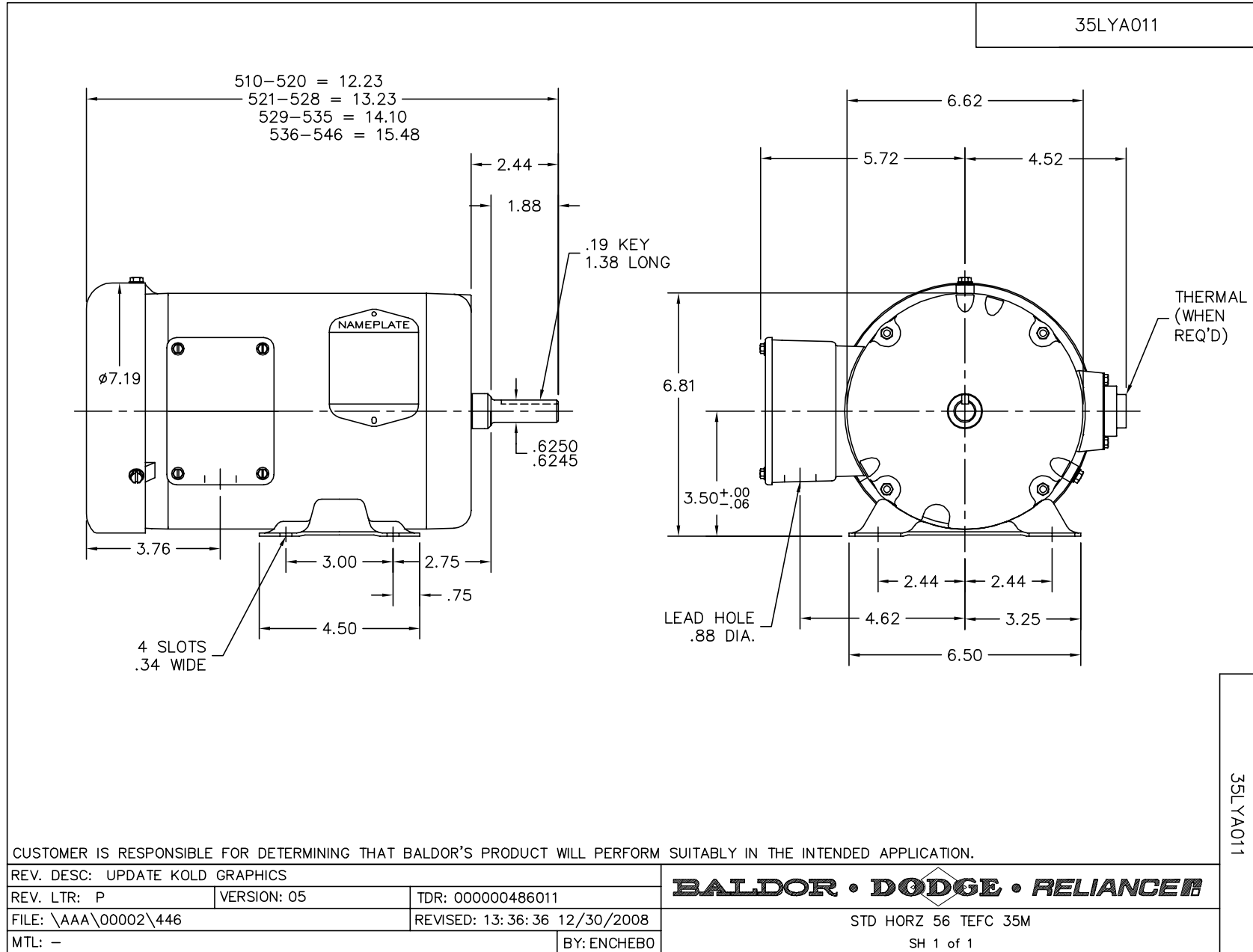
Nameplate Data				460 V, 60 Hz: High Voltage Connection	
Rated Output (HP)	.5			Full Load Torque	1.52 LB-FT
Volts	208-230/460			Start Configuration	direct on line
Full Load Amps	2.42-2.24/1.12			Breakdown Torque	7.38 LB-FT
R.P.M.	1740			Pull-up Torque	4.85 LB-FT
Hz	60	Phase	3	Locked-rotor Torque	5.48 LB-FT
NEMA Design Code	B	KVA Code	M	Starting Current	6.53 A
Service Factor (S.F.)	1.15			No-load Current	1.01 A
NEMA Nom. Eff.	72	Power Factor	58	Line-line Res. @ 25°C	39.6 Ω
Rating - Duty	40C AMB-CONT			Temp. Rise @ Rated Load	45°C
S.F. Amps				Temp. Rise @ S.F. Load	51°C
				Rotor inertia	0.065 LF ²

Load Characteristics 460 V, 60 Hz, 0.5 HP

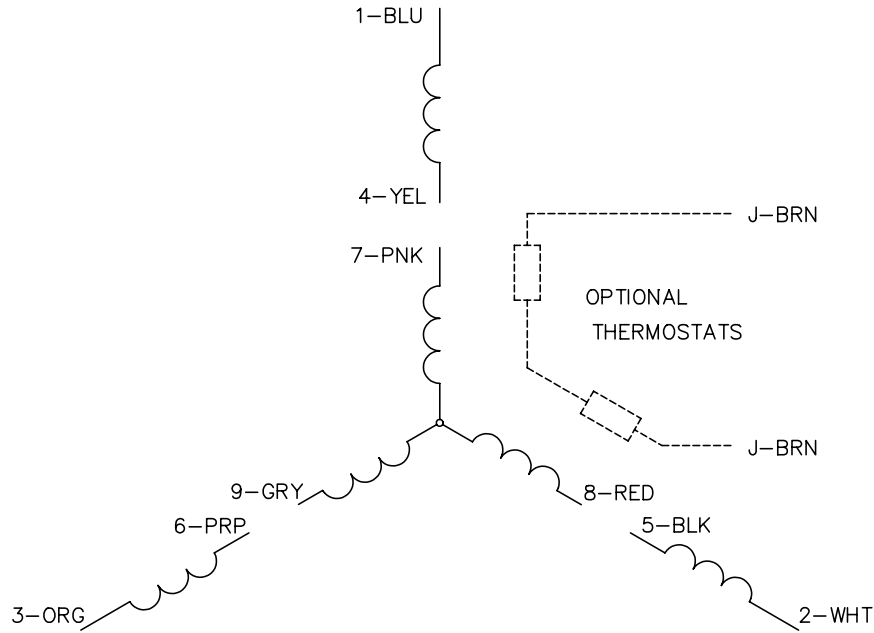
% of Rated Load	25	50	75	100	125	150	S.F.
Power Factor	27	38	49	58	67	74	63
Efficiency	44.9	60.5	68.3	72.1	74	74.3	73.2
Speed	1785	1772	1758	1742	1726	1704	1732
Line amperes	1	1.02	1.06	1.12	1.2	1.33	1.17

Performance Graph at 460V, 60Hz, 0.5HP Typical performance - Not guaranteed values

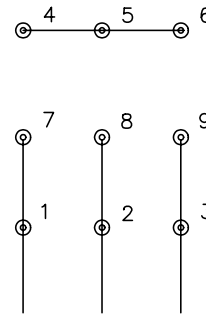




CD0005

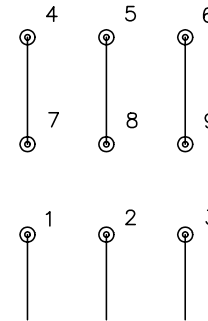


LOW VOLTAGE
(2Y)



LINE

HIGH VOLTAGE
(1Y)



LINE

NOTES:

1. INTERCHANGE ANY TWO LINE LEADS TO REVERSE ROTATION.
2. OPTIONAL THERMOSTATS ARE PROVIDED WHEN SPECIFIED.
3. ACTUAL NUMBER OF INTERNAL PARALLEL CIRCUITS MAY BE A MULTIPLE OF THOSE SHOWN ABOVE.
4. LEAD COLORS ARE OPTIONAL. LEADS MUST ALWAYS BE NUMBERED AS SHOWN.

REV. DESC: REVISE TO SHOW OPTIONAL COLORS			
REV. LTR: E	BY: JLP	REVISED: 01/19/99 10:15	TDR: 0171435
9000D		FILE: AAA00005140	MDL: -
		MTL: -	

BALDOR ELECTRIC Co.

3PH, DV, 9 LEADS

CD0005