

BALDOR® • **RELIANCE**

Product Information Packet

BM3614T

2HP,1160RPM,3PH,60HZ,184T,3627M,TEFC,F1

Part Detail							
Revision:	A	Status:	PRD/A	Change #:		Proprietary:	No
Type:	AC	Prod. Type:	3627M	Elec. Spec:	36WGS950	CD Diagram:	CD0005
Enclosure:	TEFC	Mfg Plant:		Mech. Spec:	36A021	Layout:	36LYA021
Frame:	184T	Mounting:	F1	Poles:	06	Created Date:	09-17-2012
Base:	RG	Rotation:	R	Insulation:	F	Eff. Date:	10-17-2013
Leads:	9#16					Replaced By:	
Literature:		Elec. Diagram:					

Nameplate NP1256L									
CAT.NO.	BM3614T								
SPEC.	36A021S950G1								
HP	2								
VOLTS	208-230/460								
AMP	6.9-6.8/3.4								
RPM	1160								
FRAME	184T	HZ	60	PH	3				
SER.F.	1.15	CODE	J	DES	B	CLASS	F		
NEMA-NOM-EFF	81.5	PF	68						
RATING	40C AMB-CONT								
CC	USABLE AT 208V								
DE	6206	ODE	6205						
ENCL	TEFC	SN							

AC Induction Motor Performance Data

Record # 39807 - Typical performance - not guaranteed values

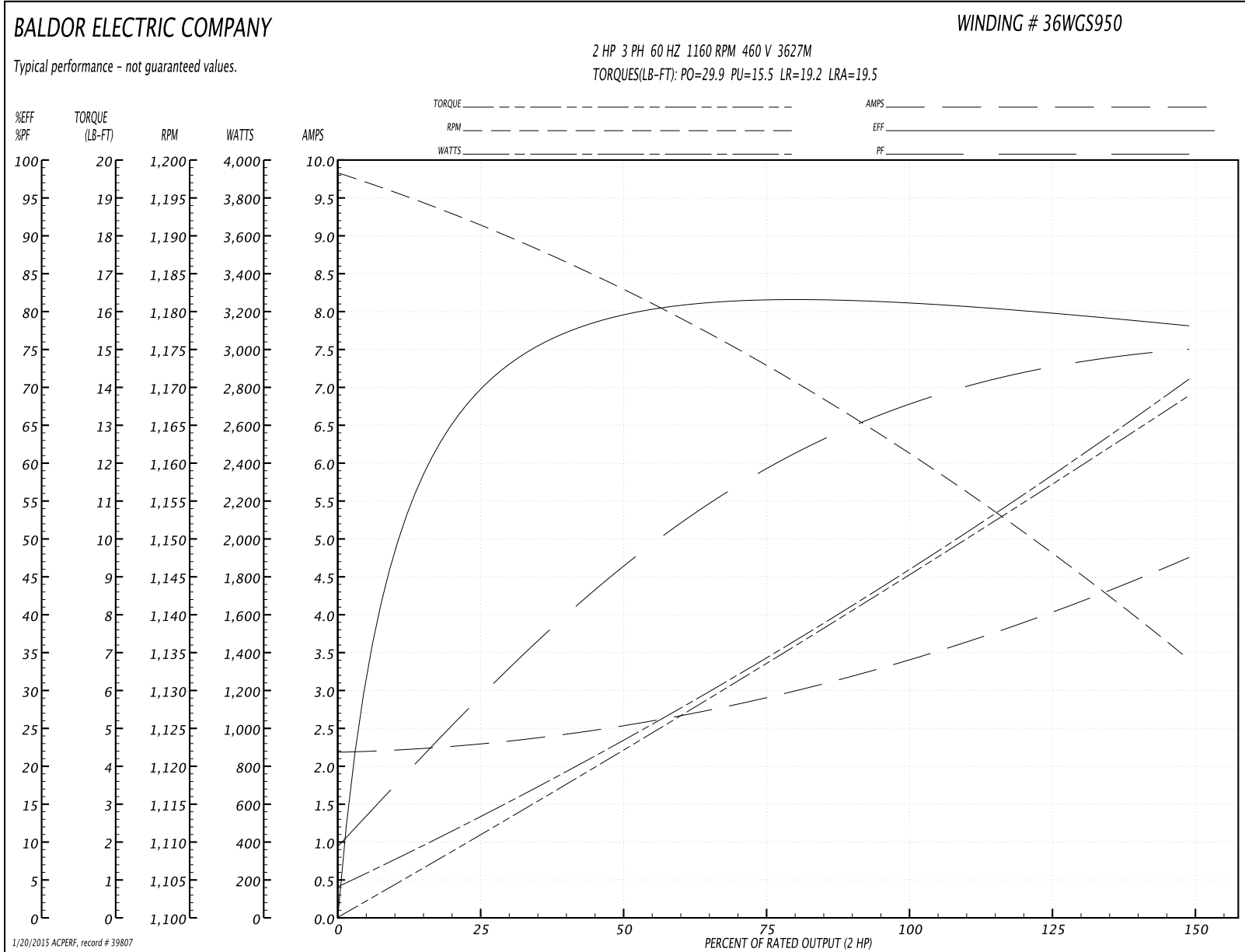
Winding: 36WGS950-R001	Type: 3627M	Enclosure: TEFC
-------------------------------	--------------------	------------------------

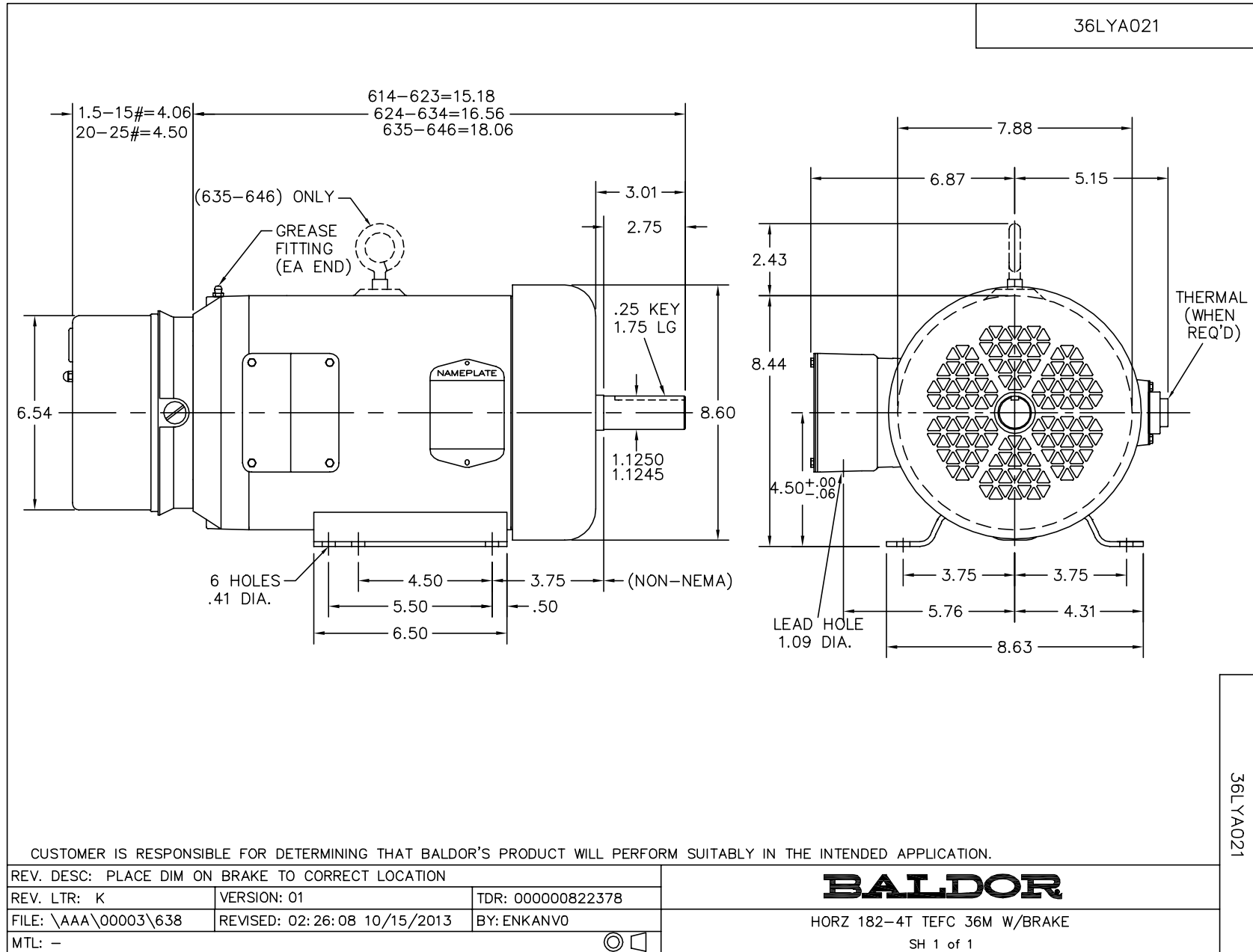
Nameplate Data				460 V, 60 Hz: High Voltage Connection	
Rated Output (HP)	2			Full Load Torque	9.03 LB-FT
Volts	208-230/460			Start Configuration	direct on line
Full Load Amps	6.9-6.8/3.4			Breakdown Torque	29.9 LB-FT
R.P.M.	1160			Pull-up Torque	15.5 LB-FT
Hz	60	Phase	3	Locked-rotor Torque	19.2 LB-FT
NEMA Design Code	B	KVA Code	J	Starting Current	19.5 A
Service Factor (S.F.)	1.15			No-load Current	2.2 A
NEMA Nom. Eff.	81.5	Power Factor	68	Line-line Res. @ 25°C	9.0252 Ω
Rating - Duty	40C AMB-CONT			Temp. Rise @ Rated Load	66°C
S.F. Amps				Temp. Rise @ S.F. Load	80°C
				Rotor inertia	0.254 LF ²

Load Characteristics 460 V, 60 Hz, 2 HP

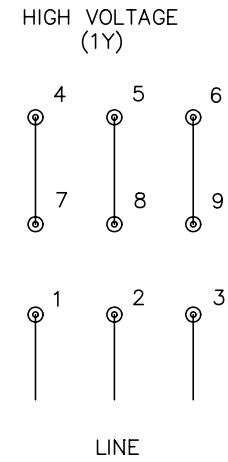
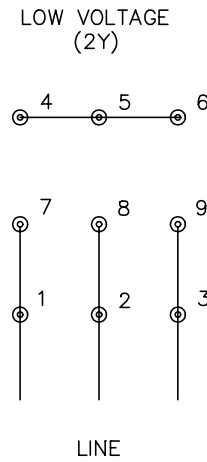
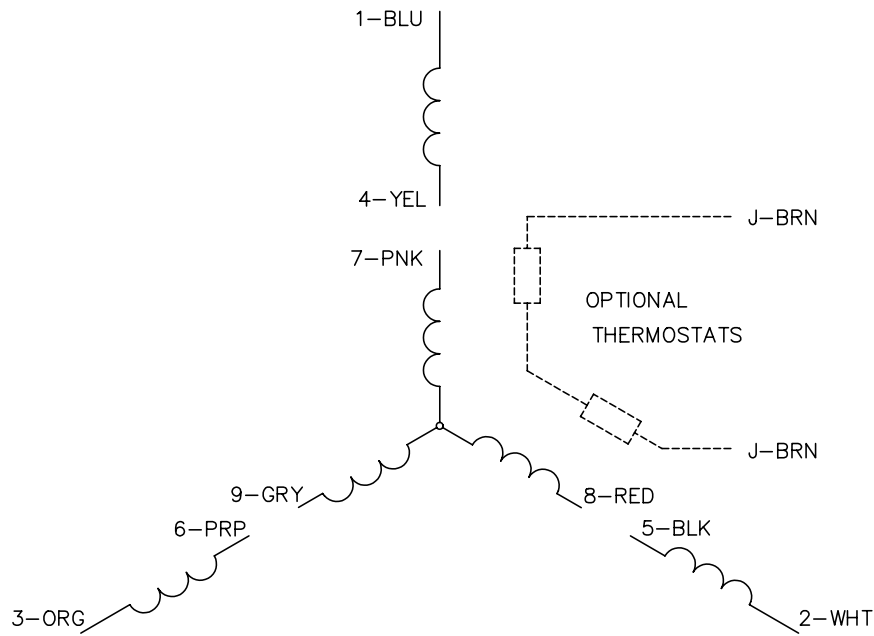
% of Rated Load	25	50	75	100	125	150	S.F.
Power Factor	29	47	58	68	72	76	70
Efficiency	68.9	78.9	81.4	81.8	80.3	78.1	80.9
Speed	1191.1	1182.4	1173.2	1162.1	1149.5	1133.4	1155
Line amperes	2.27	2.52	2.91	3.38	4.03	4.74	3.77

Performance Graph at 460V, 60Hz, 2.0HP Typical performance - Not guaranteed values





CD0005



NOTES:

1. INTERCHANGE ANY TWO LINE LEADS TO REVERSE ROTATION.
2. OPTIONAL THERMOSTATS ARE PROVIDED WHEN SPECIFIED.
3. ACTUAL NUMBER OF INTERNAL PARALLEL CIRCUITS MAY BE A MULTIPLE OF THOSE SHOWN ABOVE.
4. LEAD COLORS ARE OPTIONAL. LEADS MUST ALWAYS BE NUMBERED AS SHOWN.

REV. DESC: REVISE TO SHOW OPTIONAL COLORS			
REV. LTR: E	BY: JLP	REVISED: 01/19/99 10:15	TDR: 0171435
9000D		FILE: AAA00005140	MDL: -
		MTL: -	

BALDOR ELECTRIC Co.

3PH, DV, 9 LEADS

CD0005