

BALDOR® • *RELIANCE*

Product Information Packet

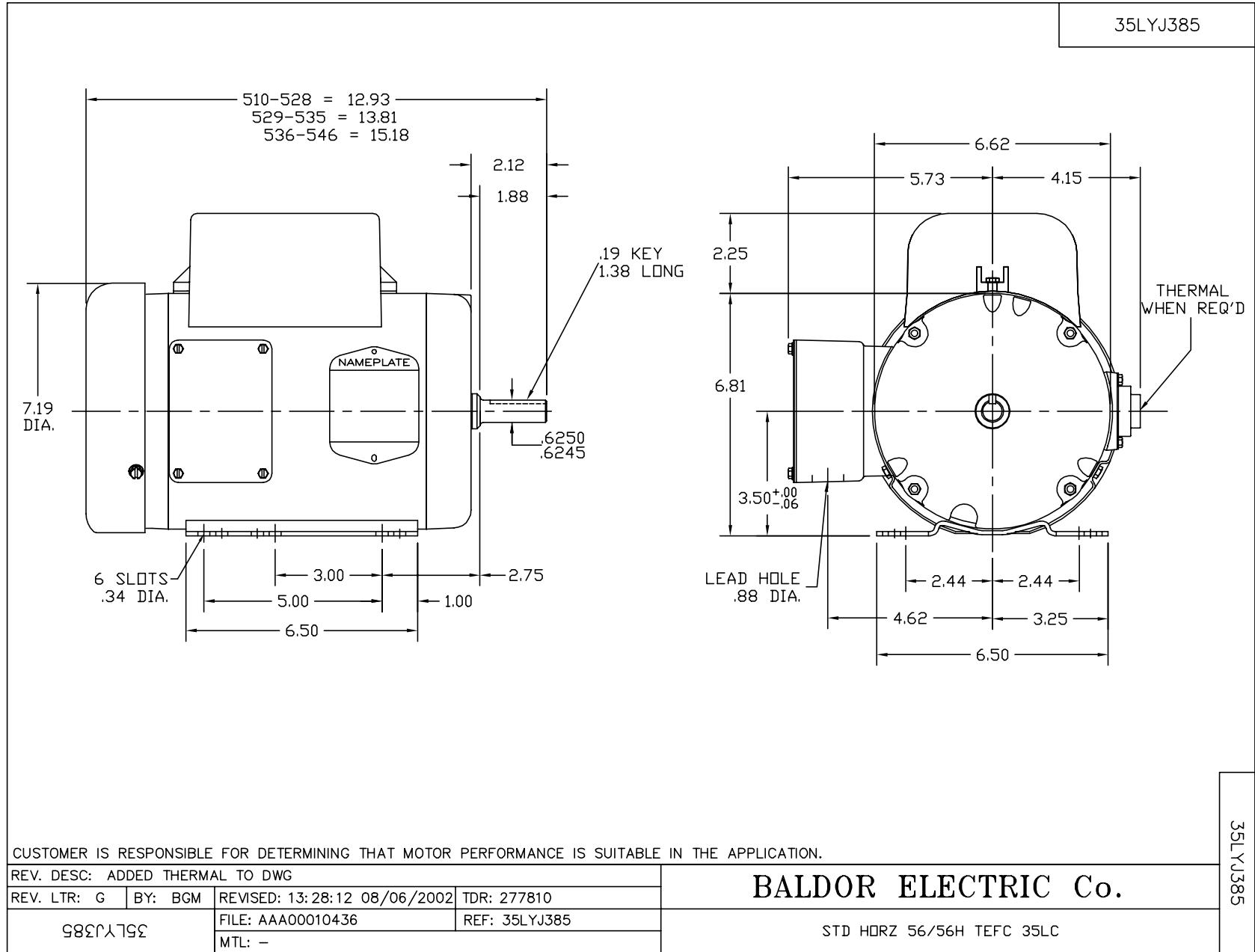
EL3509

1HP,3450RPM,1PH,60HZ,56/56H,3520LC,TEFC

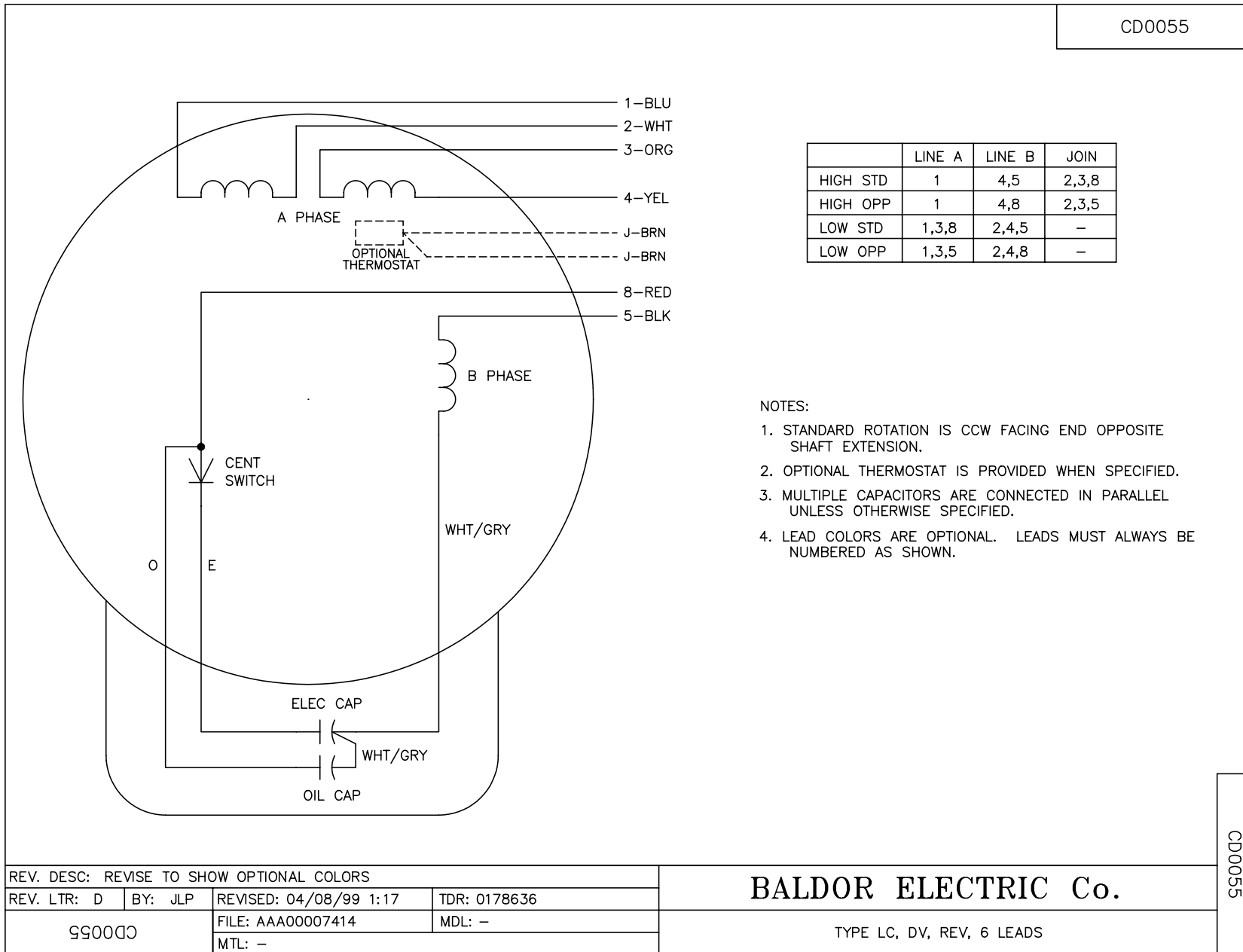
Part Detail							
Revision:	M	Status:	PRD/A	Change #:		Proprietary:	No
Type:	AC	Prod. Type:	3520LC	Elec. Spec:	35WGM131	CD Diagram:	CD0055
Enclosure:	TEFC	Mfg Plant:		Mech. Spec:	35J385	Layout:	35LYJ385
Frame:	56/56H	Mounting:	F1	Poles:	02	Created Date:	11-07-2008
Base:	RG	Rotation:	R	Insulation:	B	Eff. Date:	05-07-2014
Leads:	4#16 A PH,2#18 B PH					Replaced By:	
Literature:		Elec. Diagram:					

Nameplate NP2116L									
CAT.NO.	EL3509								
SPEC.	35J385M131G1								
HP	1								
VOLTS	115/208-230								
AMP	9.4/5-4.7								
RPM	3450								
FRAME	56/56H	HZ	60	PH	1				
SER.F.	1.25	CODE	H	DES	N	CL	B		
NEMA-NOM-EFF	74	PF	94						
RATING	40C AMB-CONT								
CC	USABLE AT 208V								
DE	6205	ODE	6203						
ENCL	TEFC	SN							
	SFA 11.6/6.9-6.8								

No performance data has been
assigned to this product.



CD0055



NOTES:

1. STANDARD ROTATION IS CCW FACING END OPPOSITE SHAFT EXTENSION.
2. OPTIONAL THERMOSTAT IS PROVIDED WHEN SPECIFIED.
3. MULTIPLE CAPACITORS ARE CONNECTED IN PARALLEL UNLESS OTHERWISE SPECIFIED.
4. LEAD COLORS ARE OPTIONAL. LEADS MUST ALWAYS BE NUMBERED AS SHOWN.

CD0055

REV. DESC: REVISE TO SHOW OPTIONAL COLORS			
REV. LTR: D	BY: JLP	REVISED: 04/08/99 1:17	TDR: 0178636
990000		FILE: AAA00007414	MDL: -
		MTL: -	

BALDOR ELECTRIC Co.

TYPE LC, DV, REV, 6 LEADS