

BALDOR® • ***RELIANCE***

Product Information Packet

EL3510

1HP,1760RPM,1PH,60HZ,56H,3532LC,TEFC,F1

| Part Detail | | | | | | | |
|-------------|------|----------------|--------|-------------|----------|---------------|------------|
| Revision: | AK | Status: | PRD/A | Change #: | | Proprietary: | No |
| Type: | AC | Prod. Type: | 3532LC | Elec. Spec: | 35WGS758 | CD Diagram: | CD0055 |
| Enclosure: | TEFC | Mfg Plant: | | Mech. Spec: | 35J385 | Layout: | 35LYJ385 |
| Frame: | 56H | Mounting: | F1 | Poles: | 04 | Created Date: | |
| Base: | RG | Rotation: | R | Insulation: | F | Eff. Date: | 11-08-2013 |
| Leads: | 6#18 | | | | | Replaced By: | |
| Literature: | | Elec. Diagram: | | | | | |

| Nameplate NP2116L | | | | | | | |
|-------------------|--------------|----------------|------|-----|---|----|---|
| CAT.NO. | EL3510 | | | | | | |
| SPEC. | 35J385S758G1 | | | | | | |
| HP | 1 | | | | | | |
| VOLTS | 115/230 | | | | | | |
| AMP | 8.5/4.25 | | | | | | |
| RPM | 1760 | | | | | | |
| FRAME | 56H | HZ | 60 | PH | 1 | | |
| SER.F. | 1.15 | CODE | L | DES | L | CL | F |
| NEMA-NOM-EFF | 82.5 | PF | 91 | | | | |
| RATING | 40C AMB-CONT | | | | | | |
| CC | | USABLE AT 208V | 4.6 | | | | |
| DE | 6205 | ODE | 6203 | | | | |
| ENCL | TEFC | SN | | | | | |
| | SFA 9.4/4.7 | | | | | | |

AC Induction Motor Performance Data

Record # 20986 - Typical performance - not guaranteed values

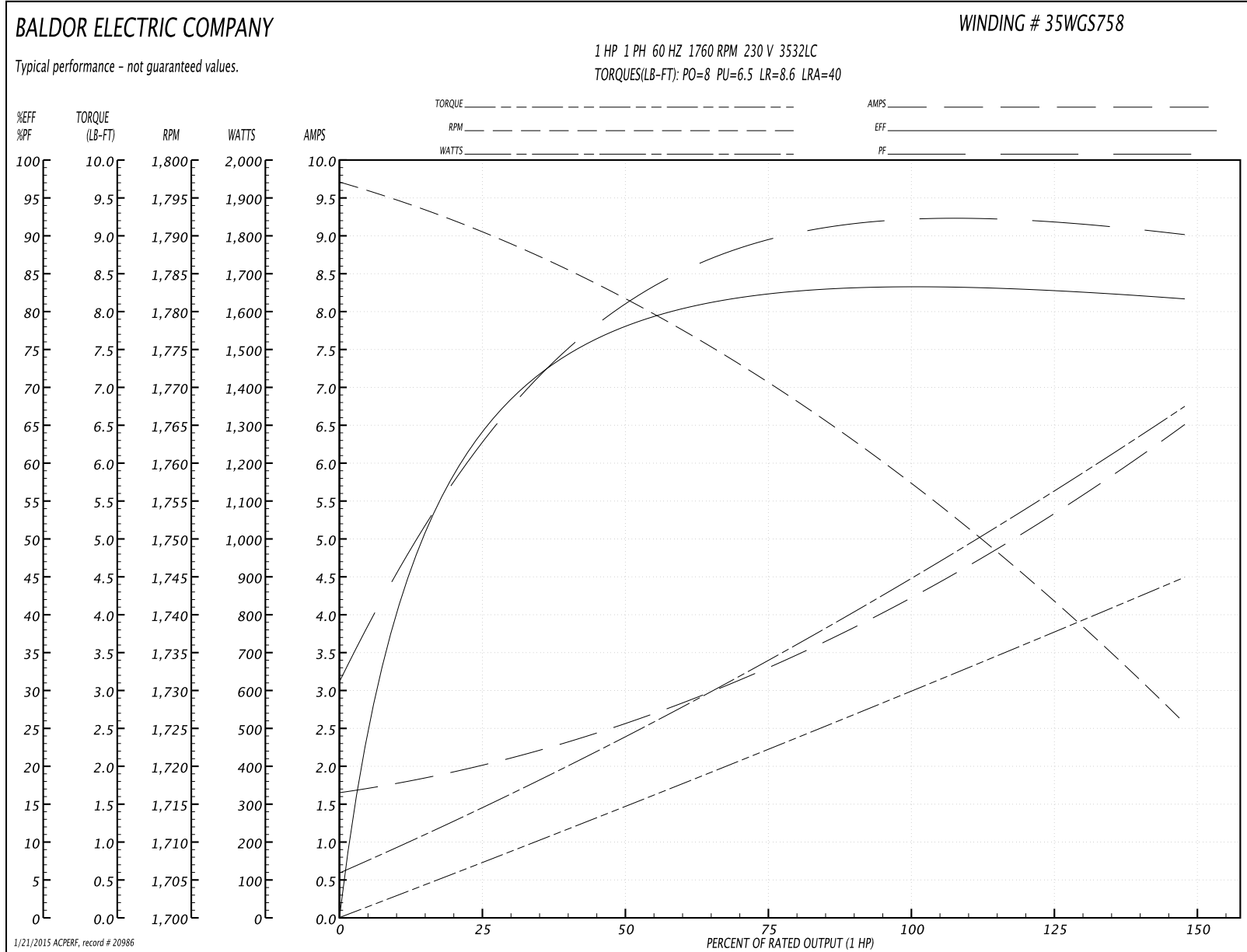
| | | |
|-------------------------------|---------------------|------------------------|
| Winding: 35WGS758-R002 | Type: 3532LC | Enclosure: TEFC |
|-------------------------------|---------------------|------------------------|

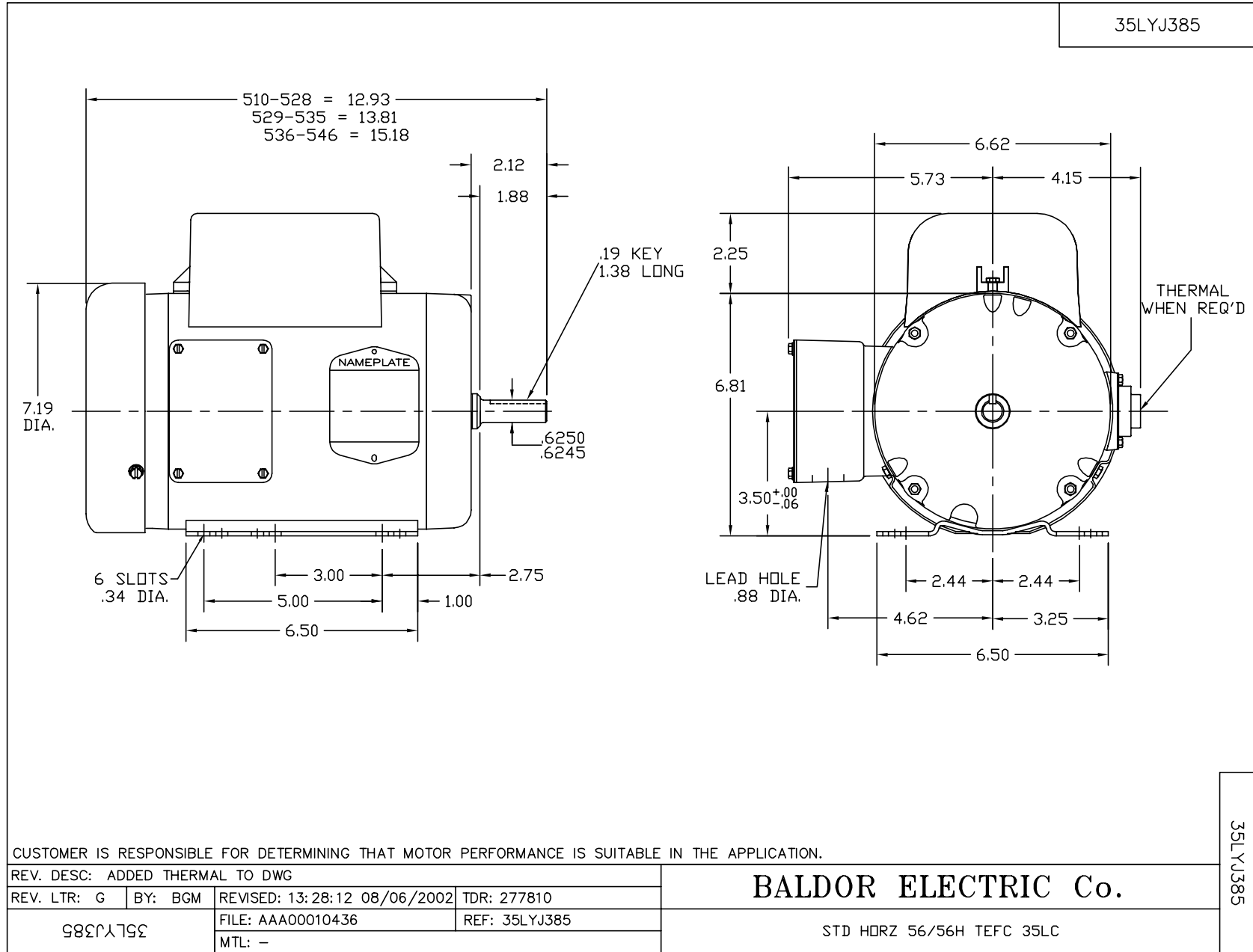
| Nameplate Data | | | | 230 V, 60 Hz: High Voltage Connection | |
|-----------------------|--------------|--------------|----|--|----------------------------|
| Rated Output (HP) | 1 | | | Full Load Torque | 3 LB-FT |
| Volts | 115/230 | | | Start Configuration | direct on line |
| Full Load Amps | 8.5/4.25 | | | Breakdown Torque | 8 LB-FT |
| R.P.M. | 1760 | | | Pull-up Torque | 6.5 LB-FT |
| Hz | 60 | Phase | 1 | Locked-rotor Torque | 8.6 LB-FT |
| NEMA Design Code | L | KVA Code | L | Starting Current | 40 A |
| Service Factor (S.F.) | 1.15 | | | No-load Current | 1.7 A |
| NEMA Nom. Eff. | 82.5 | Power Factor | 91 | Line-line Res. @ 25°C | 0.706 Ω A Ph 1.8 Ω B Ph |
| Rating - Duty | 40C AMB-CONT | | | Temp. Rise @ Rated Load | 39°C |
| S.F. Amps | 9.4/4.7 | | | Temp. Rise @ S.F. Load | 48°C |

Load Characteristics 230 V, 60 Hz, 1 HP

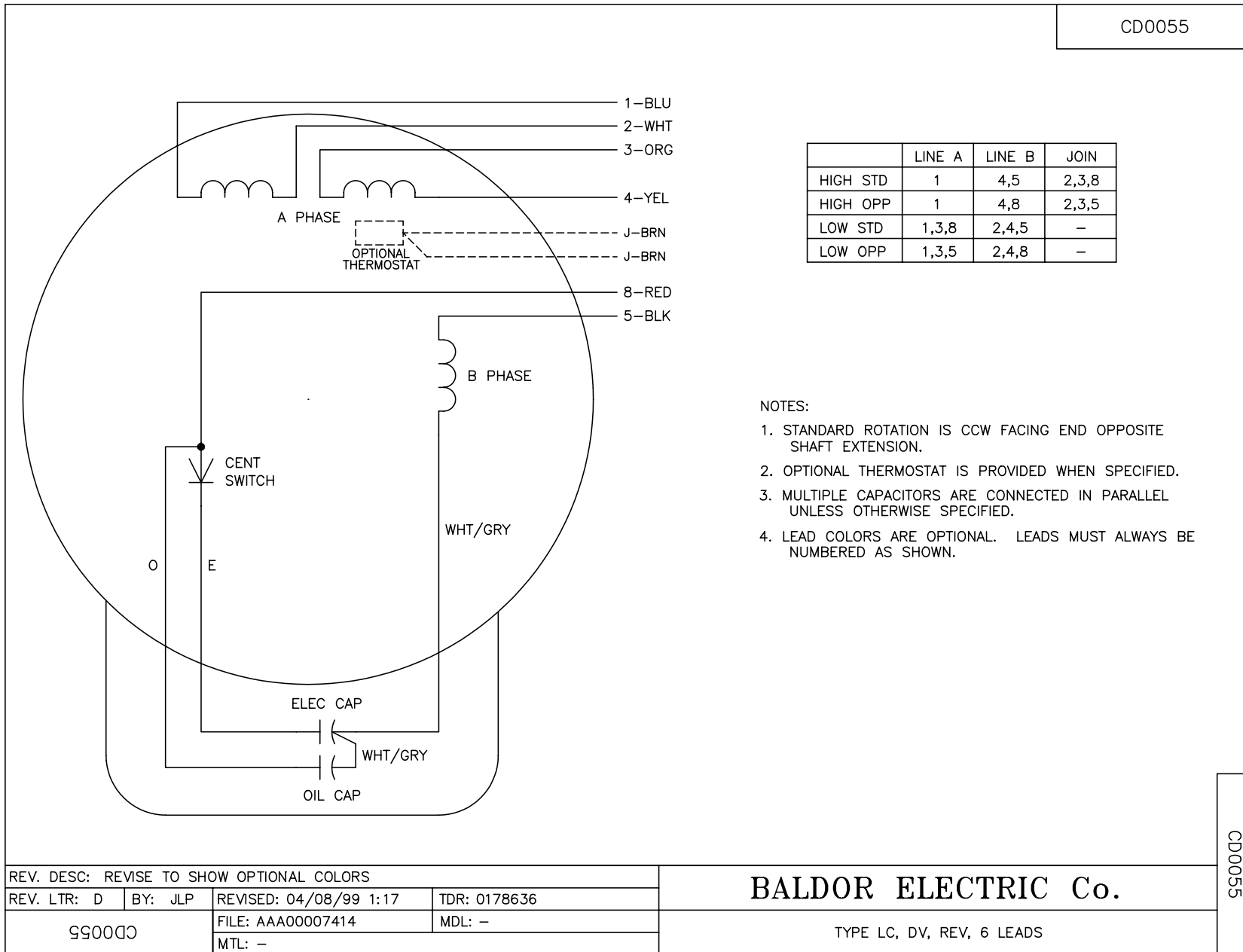
| % of Rated Load | 25 | 50 | 75 | 100 | 125 | 150 | S.F. |
|-----------------|------|------|------|------|------|------|------|
| Power Factor | 65 | 81 | 88 | 91 | 93 | 94 | 92 |
| Efficiency | 66.3 | 76.9 | 83.2 | 83.6 | 82 | 82 | 82.6 |
| Speed | 1791 | 1781 | 1769 | 1758 | 1743 | 1725 | 1749 |
| Line amperes | 1.95 | 2.55 | 3.4 | 4.25 | 5.3 | 6.5 | 4.88 |

Performance Graph at 230V, 60Hz, 1.0HP Typical performance - Not guaranteed values





CD0055



| | | | |
|---|---------|------------------------|--------------|
| REV. DESC: REVISE TO SHOW OPTIONAL COLORS | | | |
| REV. LTR: D | BY: JLP | REVISED: 04/08/99 1:17 | TDR: 0178636 |
| 990000 | | FILE: AAA00007414 | MDL: - |
| | | MTL: - | |

BALDOR ELECTRIC Co.

TYPE LC, DV, REV, 6 LEADS

CD0055