

BALDOR® • *RELIANCE*

Product Information Packet

EL3605T

2HP,1740RPM,1PH,60HZ,184T,3623LC,TEFC,F1

Part Detail							
Revision:	AH	Status:	PRD/A	Change #:		Proprietary:	No
Type:	AC	Prod. Type:	3623LC	Elec. Spec:	36WGY546	CD Diagram:	CD0055
Enclosure:	TEFC	Mfg Plant:		Mech. Spec:	36E004	Layout:	36LYE004
Frame:	182T	Mounting:	F1	Poles:	04	Created Date:	
Base:	RG	Rotation:	R	Insulation:	F	Eff. Date:	02-04-2013
Leads:	4#14 A PH,2#16 B PH					Replaced By:	
Literature:		Elec. Diagram:					

Nameplate NP2116L							
CAT.NO.	EL3605T						
SPEC.	36E004Y546G1						
HP	2						
VOLTS	115/230						
AMP	17.6/8.8						
RPM	1740						
FRAME	182T	HZ	60	PH	1		
SER.F.	1.15	CODE	J	DES	L	CL	F
NEMA-NOM-EFF	82.5	PF	90				
RATING	40C AMB-CONT						
CC		USABLE AT 208V					
DE	6206	ODE	6205				
ENCL	TEFC	SN					
	SFA 20.4/10.2						

AC Induction Motor Performance Data

Record # 11408 - Typical performance - not guaranteed values

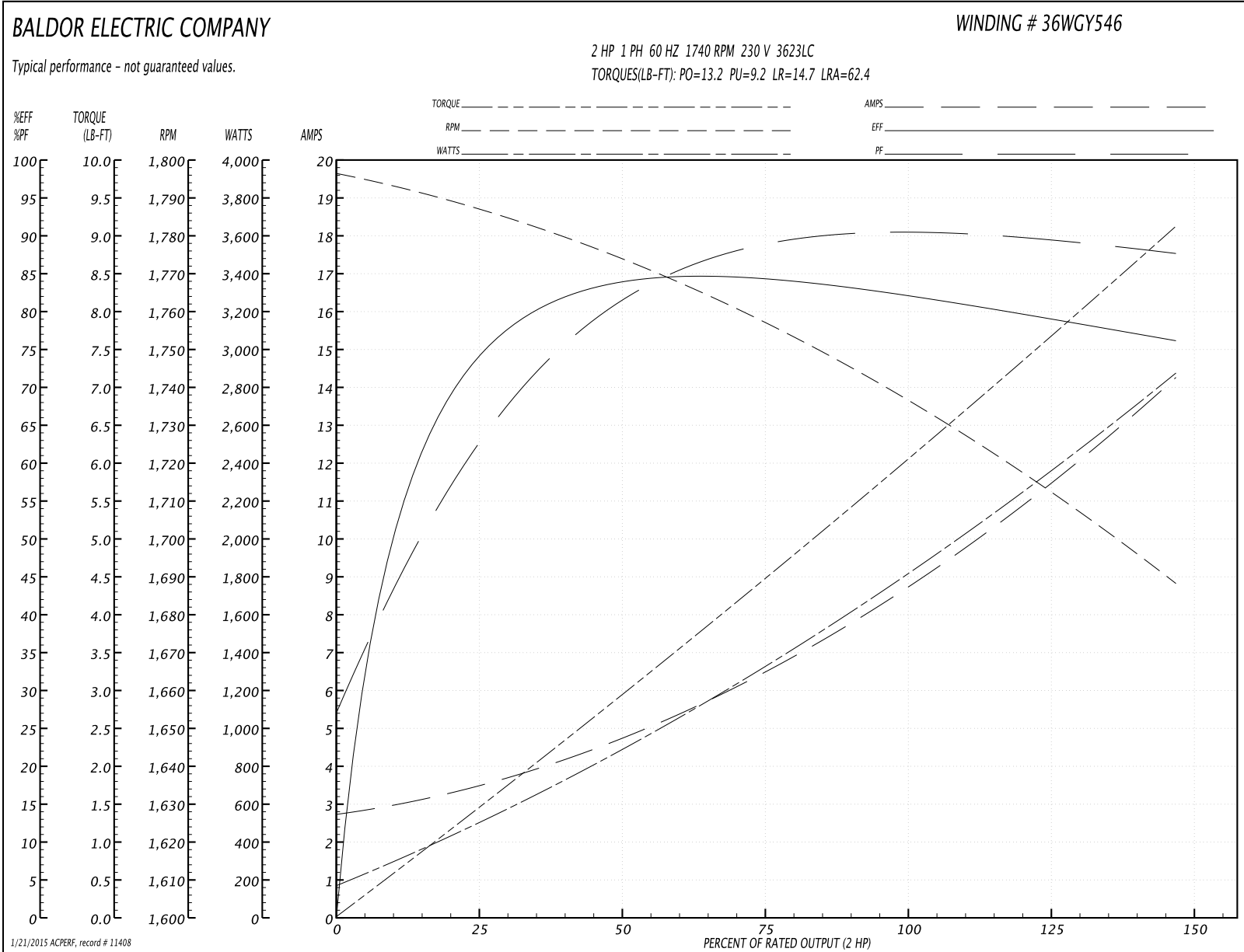
Winding: 36WGY546-R001	Type: 3623LC	Enclosure: TEFC
-------------------------------	---------------------	------------------------

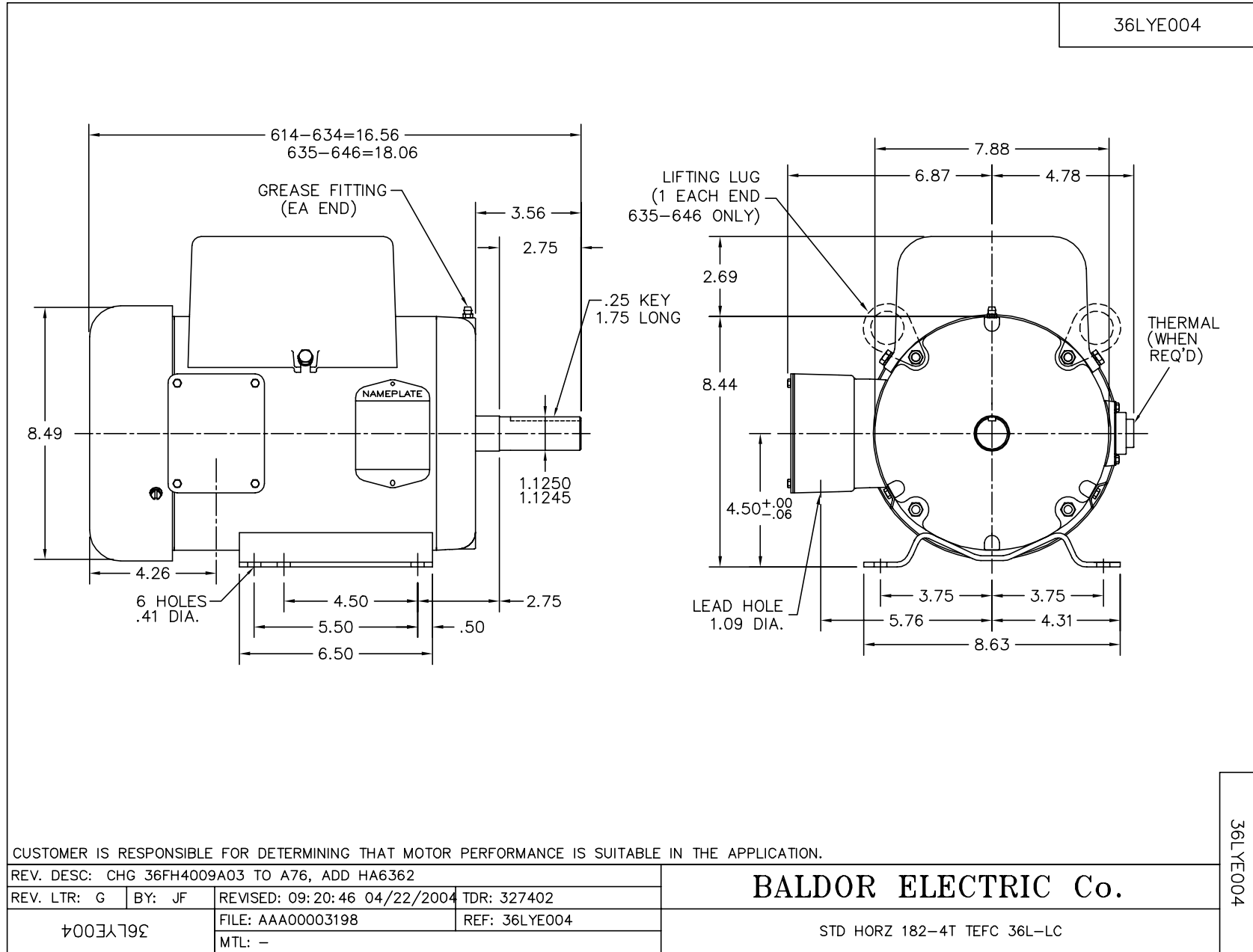
Nameplate Data				230 V, 60 Hz: High Voltage Connection	
Rated Output (HP)	2			Full Load Torque	6.1 LB-FT
Volts	115/230			Start Configuration	direct on line
Full Load Amps	17.6/8.8			Breakdown Torque	13.2 LB-FT
R.P.M.	1740			Pull-up Torque	9.2 LB-FT
Hz	60	Phase	1	Locked-rotor Torque	14.7 LB-FT
NEMA Design Code	L	KVA Code	J	Starting Current	62.4 A
Service Factor (S.F.)	1.15			No-load Current	2.72 A
NEMA Nom. Eff.	82.5	Power Factor	90	Line-line Res. @ 25°C	1.22 Ω A Ph 0.64 Ω B Ph
Rating - Duty	40C AMB-CONT			Temp. Rise @ Rated Load	55°C
S.F. Amps	20.4/10.2			Temp. Rise @ S.F. Load	71°C

Load Characteristics 230 V, 60 Hz, 2 HP

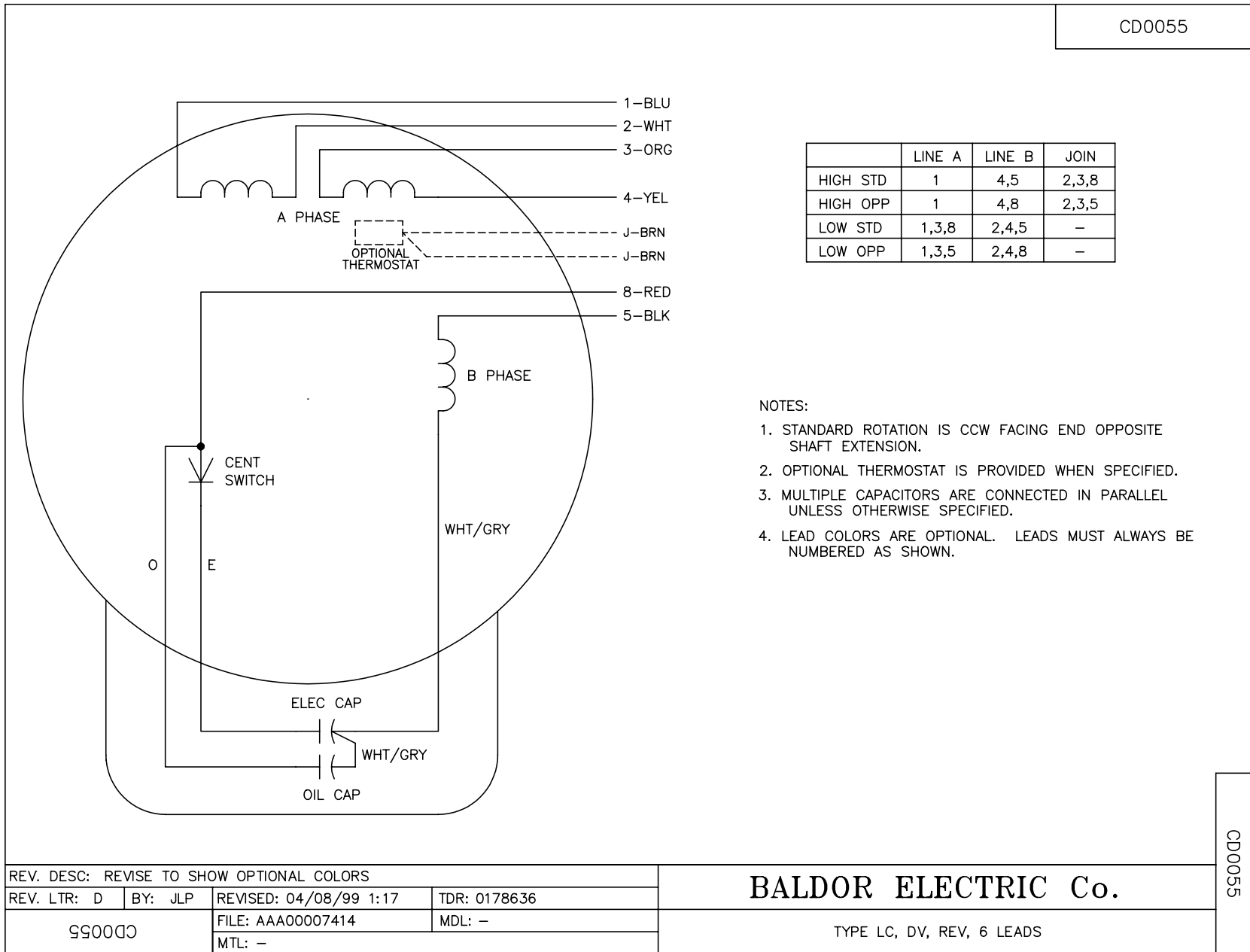
% of Rated Load	25	50	75	100	125	150	S.F.
Power Factor	67	82	87	90	91	90	0
Efficiency	72.4	82.1	84	83	80.1	75.4	0
Speed	1784	1771	1755	1739	1716	1685	0
Line amperes	3.48	4.9	6.68	8.78	11.28	14.36	10.2

Performance Graph at 230V, 60Hz, 2.0HP Typical performance - Not guaranteed values





CD0055



CD0055

REV. DESC: REVISE TO SHOW OPTIONAL COLORS			
REV. LTR: D	BY: JLP	REVISED: 04/08/99 1:17	TDR: 0178636
990000		FILE: AAA00007414	MDL: -
		MTL: -	

BALDOR ELECTRIC Co.

TYPE LC, DV, REV, 6 LEADS