

BALDOR® • **RELIANCE**

Product Information Packet

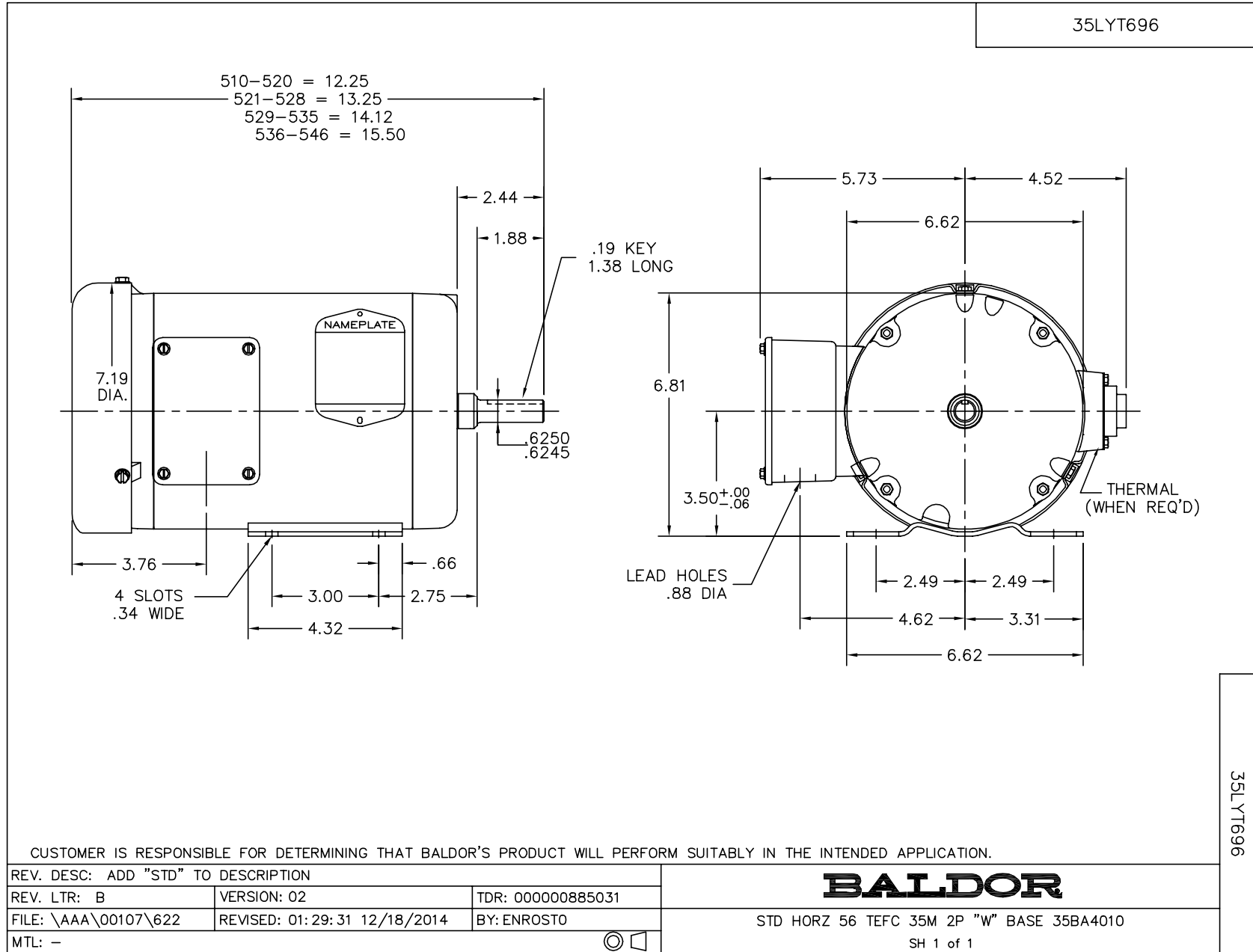
EM3545

1HP,3450RPM,3PH,60HZ,56,3516M,TEFC,F1,N

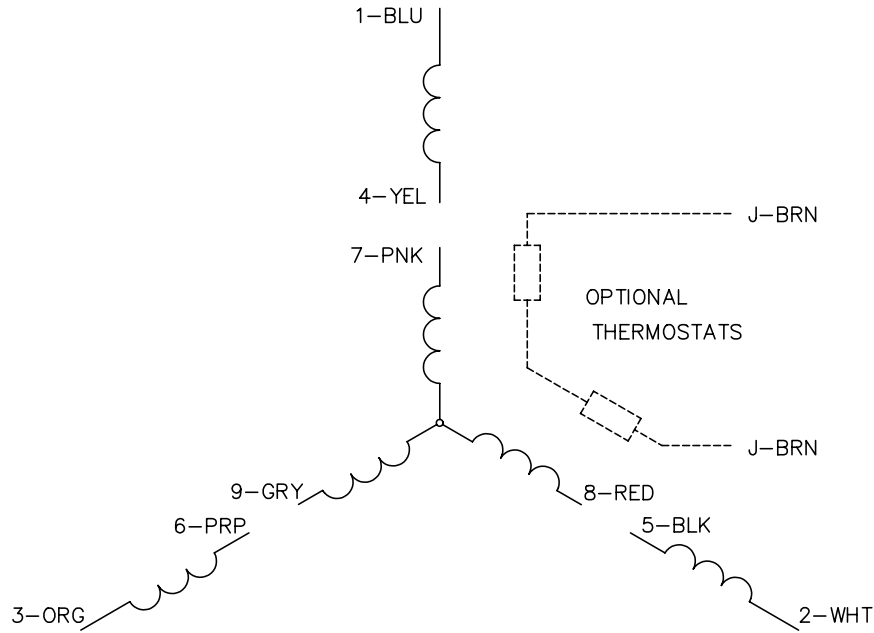
Part Detail							
Revision:	E	Status:	PRD/A	Change #:		Proprietary:	No
Type:	AC	Prod. Type:	3516M	Elec. Spec:	35WGY474	CD Diagram:	CD0005
Enclosure:	TEFC	Mfg Plant:		Mech. Spec:	35T696	Layout:	35LYT696
Frame:	56	Mounting:	F1	Poles:	02	Created Date:	05-05-2010
Base:	RG	Rotation:	R	Insulation:	F	Eff. Date:	01-30-2013
Leads:	9#18					Replaced By:	
Literature:		Elec. Diagram:					

Nameplate NP1259L						
CAT.NO.	EM3545					
SPEC.	35T696Y474G1					
HP	1					
VOLTS	230/460					
AMP	2.8/1.4					
RPM	3450					
FRAME	56	HZ	60	PH	3	
SER.F.	1.25	CODE	K	DES	B	CL F
NEMA-NOM-EFF	77	PF	87			
RATING	40C AMB-CONT					
CC	USABLE AT 208V					
DE	6205	ODE	6203			
ENCL	TEFC	SN				
	SFA 3.4/1.7					

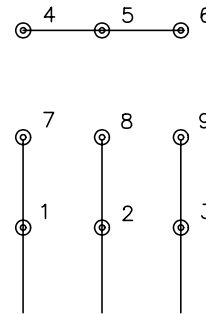
No performance data has been
assigned to this product.



CD0005

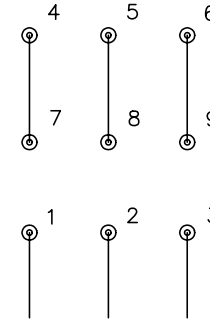


LOW VOLTAGE
(2Y)



LINE

HIGH VOLTAGE
(1Y)



LINE

NOTES:

1. INTERCHANGE ANY TWO LINE LEADS TO REVERSE ROTATION.
2. OPTIONAL THERMOSTATS ARE PROVIDED WHEN SPECIFIED.
3. ACTUAL NUMBER OF INTERNAL PARALLEL CIRCUITS MAY BE A MULTIPLE OF THOSE SHOWN ABOVE.
4. LEAD COLORS ARE OPTIONAL. LEADS MUST ALWAYS BE NUMBERED AS SHOWN.

REV. DESC: REVISE TO SHOW OPTIONAL COLORS			
REV. LTR: E	BY: JLP	REVISED: 01/19/99 10:15	TDR: 0171435
900000		FILE: AAA00005140	MDL: -
		MTL: -	

BALDOR ELECTRIC Co.

3PH, DV, 9 LEADS

CD0005