

BALDOR® • **RELIANCE**

Product Information Packet

EM3582T

1HP,1155RPM,3PH,60HZ,145T,0524M,TEFC,F1

Part Detail							
Revision:	J	Status:	PRD/A	Change #:		Proprietary:	No
Type:	AC	Prod. Type:	0524M	Elec. Spec:	05WGX091	CD Diagram:	CD0005
Enclosure:	TEFC	Mfg Plant:		Mech. Spec:	05C001	Layout:	05LYC001
Frame:	145T	Mounting:	F1	Poles:	06	Created Date:	03-31-2010
Base:	RG	Rotation:	R	Insulation:	F	Eff. Date:	07-03-2014
Leads:	9#18					Replaced By:	
Literature:		Elec. Diagram:					

Nameplate NP1259L						
CAT.NO.	EM3582T					
SPEC.	05C001X091G1					
HP	1					
VOLTS	208-230/460					
AMP	3.4/1.7					
RPM	1155					
FRAME	145T	HZ	60	PH	3	
SER.F.	1.15	CODE	K	DES	B	CL F
NEMA-NOM-EFF	82.5	PF	65			
RATING	40C AMB-CONT					
CC	010A	USABLE AT 208V	3.4			
DE	6205	ODE	6203			
ENCL	TEFC	SN				

AC Induction Motor Performance Data

Record # 31271 - Typical performance - not guaranteed values

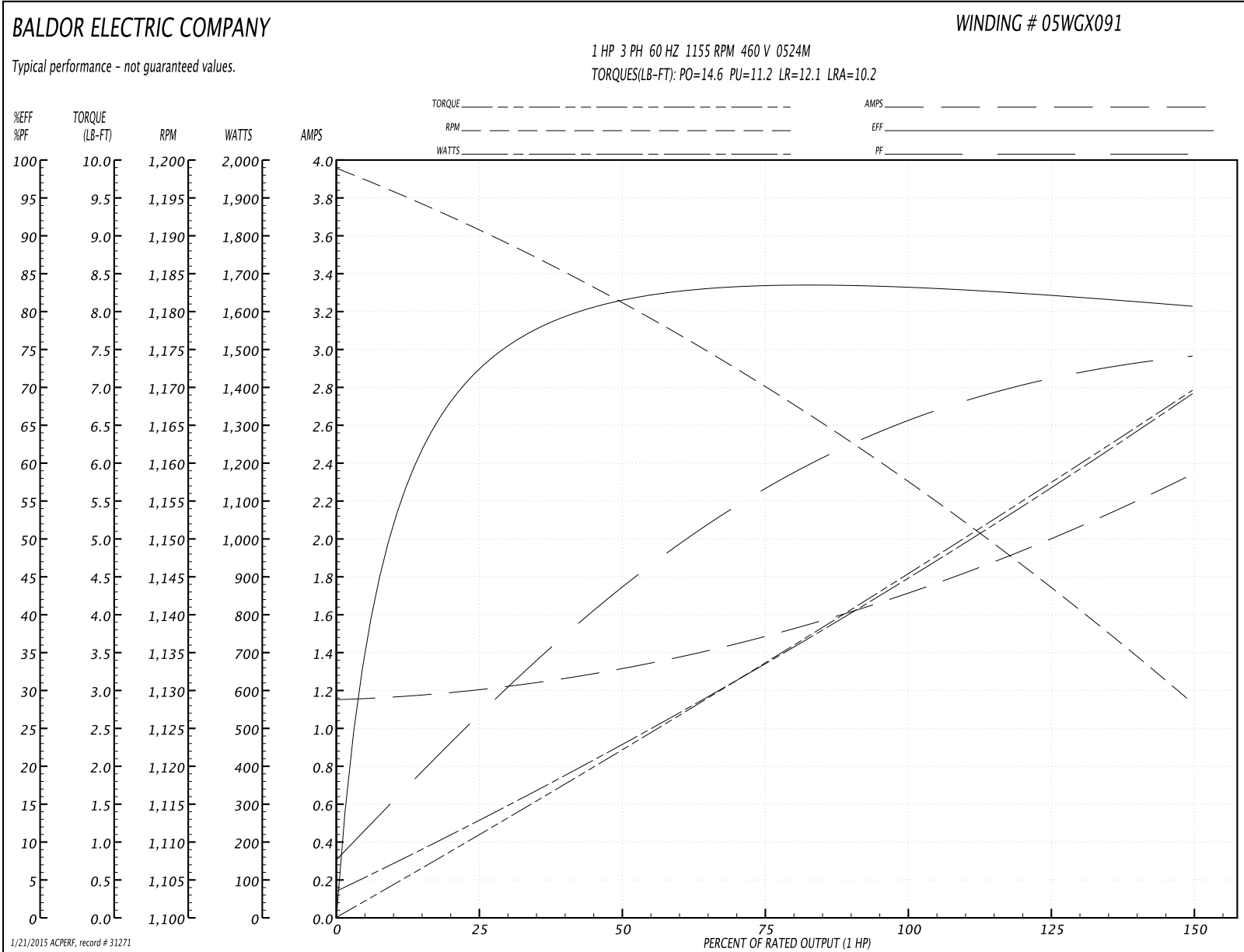
Winding: 05WGX091-R001	Type: 0524M	Enclosure: TEFC
-------------------------------	--------------------	------------------------

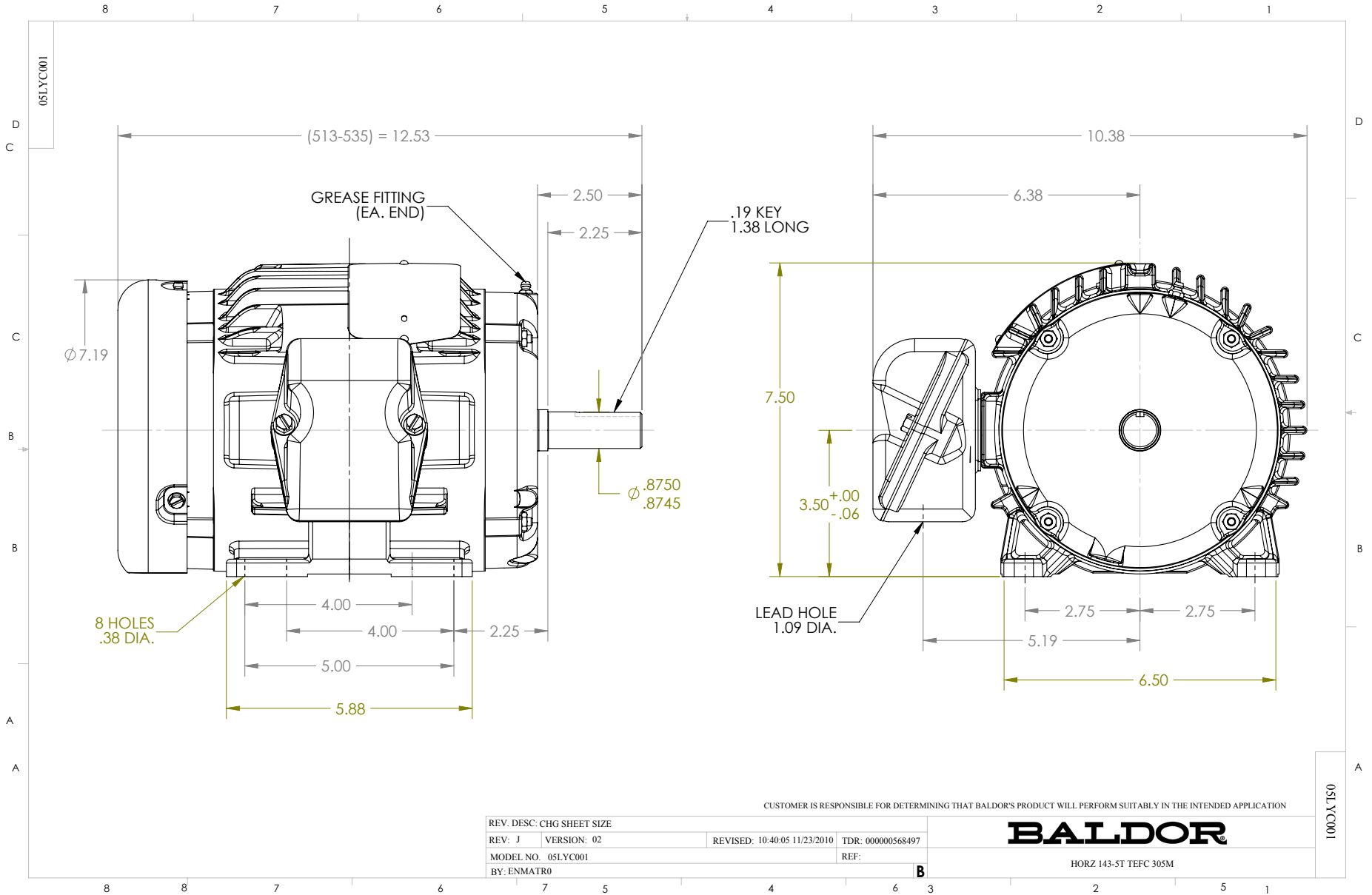
Nameplate Data				460 V, 60 Hz: High Voltage Connection	
Rated Output (HP)	1			Full Load Torque	4.53 LB-FT
Volts	208-230/460			Start Configuration	direct on line
Full Load Amps	3.4/1.7			Breakdown Torque	14.6 LB-FT
R.P.M.	1155			Pull-up Torque	11.2 LB-FT
Hz	60	Phase	3	Locked-rotor Torque	12.1 LB-FT
NEMA Design Code	B	KVA Code	K	Starting Current	10.2 A
Service Factor (S.F.)	1.15			No-load Current	1.16 A
NEMA Nom. Eff.	82.5	Power Factor	65	Line-line Res. @ 25°C	16.68 Ω
Rating - Duty	40C AMB-CONT			Temp. Rise @ Rated Load	33°C
S.F. Amps				Temp. Rise @ S.F. Load	40°C

Load Characteristics 460 V, 60 Hz, 1 HP

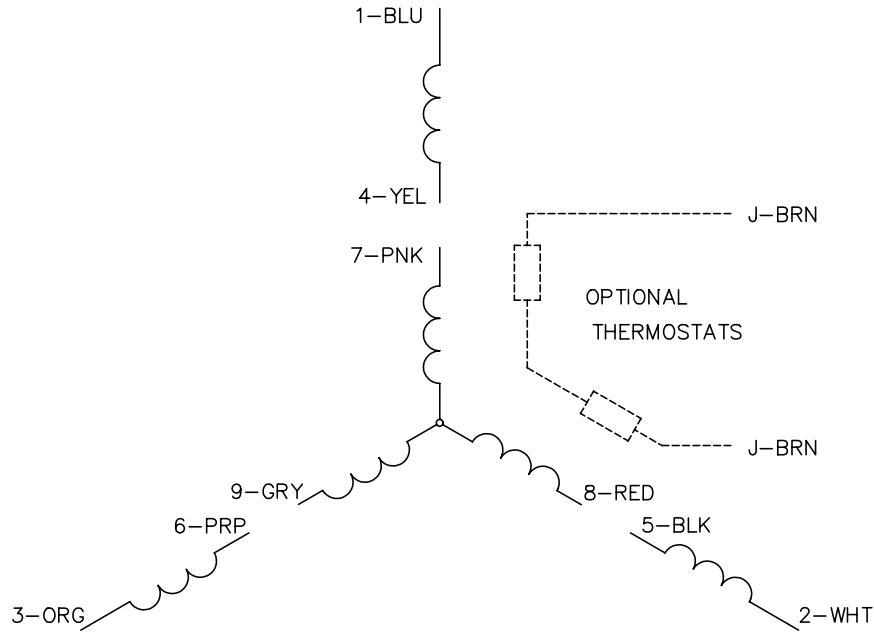
% of Rated Load	25	50	75	100	125	150	S.F.
Power Factor	27	44	56	65	71	74	69
Efficiency	71.5	81.3	83.5	83.6	82.5	80.5	82.9
Speed	1191.2	1180.9	1169.8	1157.9	1144.2	1127.9	1150
Line amperes	1.19	1.31	1.49	1.72	2	2.34	1.89

Performance Graph at 460V, 60Hz, 1.0HP Typical performance - Not guaranteed values

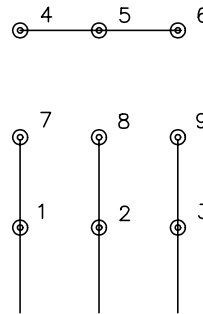




CD0005

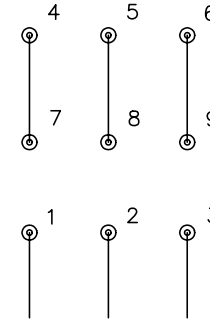


LOW VOLTAGE
(2Y)



LINE

HIGH VOLTAGE
(1Y)



LINE

NOTES:

1. INTERCHANGE ANY TWO LINE LEADS TO REVERSE ROTATION.
2. OPTIONAL THERMOSTATS ARE PROVIDED WHEN SPECIFIED.
3. ACTUAL NUMBER OF INTERNAL PARALLEL CIRCUITS MAY BE A MULTIPLE OF THOSE SHOWN ABOVE.
4. LEAD COLORS ARE OPTIONAL. LEADS MUST ALWAYS BE NUMBERED AS SHOWN.

REV. DESC: REVISE TO SHOW OPTIONAL COLORS

REV. LTR: E BY: JLP

REVISED: 01/19/99 10:15

TDR: 0171435

900003

FILE: AAA00005140

MDL: -

MTL: -

BALDOR ELECTRIC Co.

3PH, DV, 9 LEADS

CD0005