

BALDOR® • **RELIANCE**

Product Information Packet

EM3586T

2HP,3490RPM,3PH,60HZ,145T,0526M,TEFC,F1

| Part Detail | | | | | | | |
|-------------|------|----------------|-------|-------------|----------|---------------|------------|
| Revision: | J | Status: | PRD/A | Change #: | | Proprietary: | No |
| Type: | AC | Prod. Type: | 0526M | Elec. Spec: | 05WGX117 | CD Diagram: | CD0005 |
| Enclosure: | TEFC | Mfg Plant: | | Mech. Spec: | 05C001 | Layout: | 05LYC001 |
| Frame: | 145T | Mounting: | F1 | Poles: | 02 | Created Date: | 07-13-2010 |
| Base: | RG | Rotation: | R | Insulation: | F | Eff. Date: | 07-03-2014 |
| Leads: | 9#18 | | | | | Replaced By: | |
| Literature: | | Elec. Diagram: | | | | | |

| Nameplate NP1259L | | | | | | |
|-------------------|--------------|----------------|------|-----|---|------|
| CAT.NO. | EM3586T | | | | | |
| SPEC. | 05C001X117E7 | | | | | |
| HP | 2 | | | | | |
| VOLTS | 208-230/460 | | | | | |
| AMP | 5.3-5/2.5 | | | | | |
| RPM | 3490 | | | | | |
| FRAME | 145T | HZ | 60 | PH | 3 | |
| SER.F. | 1.15 | CODE | M | DES | B | CL F |
| NEMA-NOM-EFF | 85.5 | PF | 88 | | | |
| RATING | 40C AMB-CONT | | | | | |
| CC | 010A | USABLE AT 208V | | | | |
| DE | 6205 | ODE | 6203 | | | |
| ENCL | TEFC | SN | | | | |
| | | | | | | |

AC Induction Motor Performance Data

Record # 31839 - Typical performance - not guaranteed values

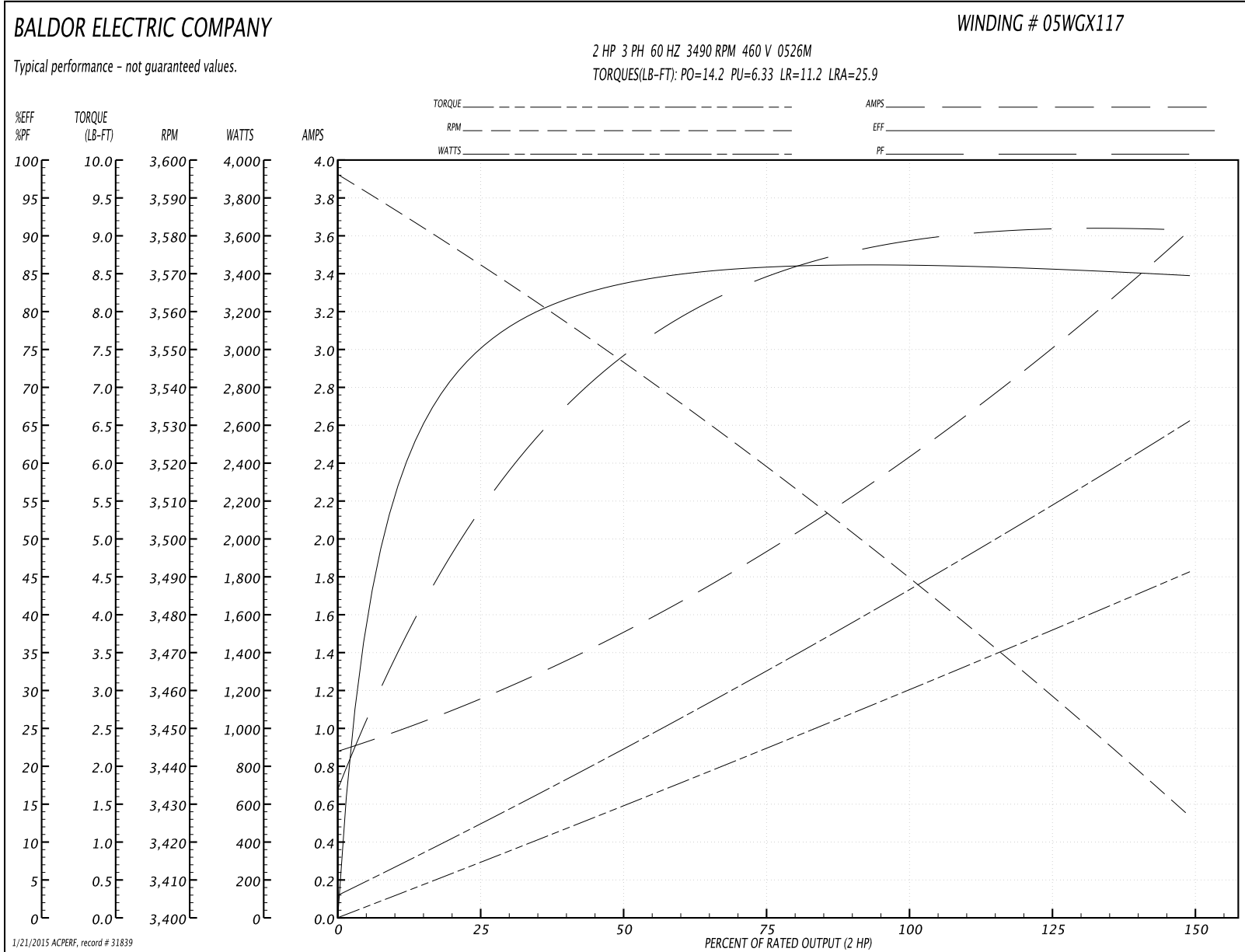
| | | |
|-------------------------------|--------------------|------------------------|
| Winding: 05WGX117-R001 | Type: 0526M | Enclosure: TEFC |
|-------------------------------|--------------------|------------------------|

| Nameplate Data | | | | 460 V, 60 Hz: High Voltage Connection | |
|-----------------------|--------------|--------------|----|--|----------------|
| Rated Output (HP) | 2 | | | Full Load Torque | 2.98 LB-FT |
| Volts | 208-230/460 | | | Start Configuration | direct on line |
| Full Load Amps | 5.3-5/2.5 | | | Breakdown Torque | 14.2 LB-FT |
| R.P.M. | 3490 | | | Pull-up Torque | 6.33 LB-FT |
| Hz | 60 | Phase | 3 | Locked-rotor Torque | 11.2 LB-FT |
| NEMA Design Code | B | KVA Code | M | Starting Current | 25.9 A |
| Service Factor (S.F.) | 1.15 | | | No-load Current | 0.912 A |
| NEMA Nom. Eff. | 85.5 | Power Factor | 88 | Line-line Res. @ 25°C | 6.9119 Ω |
| Rating - Duty | 40C AMB-CONT | | | Temp. Rise @ Rated Load | 44°C |
| S.F. Amps | | | | Temp. Rise @ S.F. Load | 52°C |

Load Characteristics 460 V, 60 Hz, 2 HP

| % of Rated Load | 25 | 50 | 75 | 100 | 125 | 150 | S.F. |
|-----------------|--------|--------|--------|--------|--------|--------|------|
| Power Factor | 55 | 75 | 84 | 88 | 90 | 91 | 89 |
| Efficiency | 74.3 | 83.5 | 85.9 | 86.4 | 85.9 | 84.8 | 86.1 |
| Speed | 3571.7 | 3546.5 | 3520.2 | 3492.1 | 3460.7 | 3425.5 | 3473 |
| Line amperes | 1.1 | 1.47 | 1.93 | 2.44 | 3 | 3.61 | 2.78 |

Performance Graph at 460V, 60Hz, 2.0HP Typical performance - Not guaranteed values



AC Induction Motor Performance Data

Record # 31839 - Typical performance - not guaranteed values

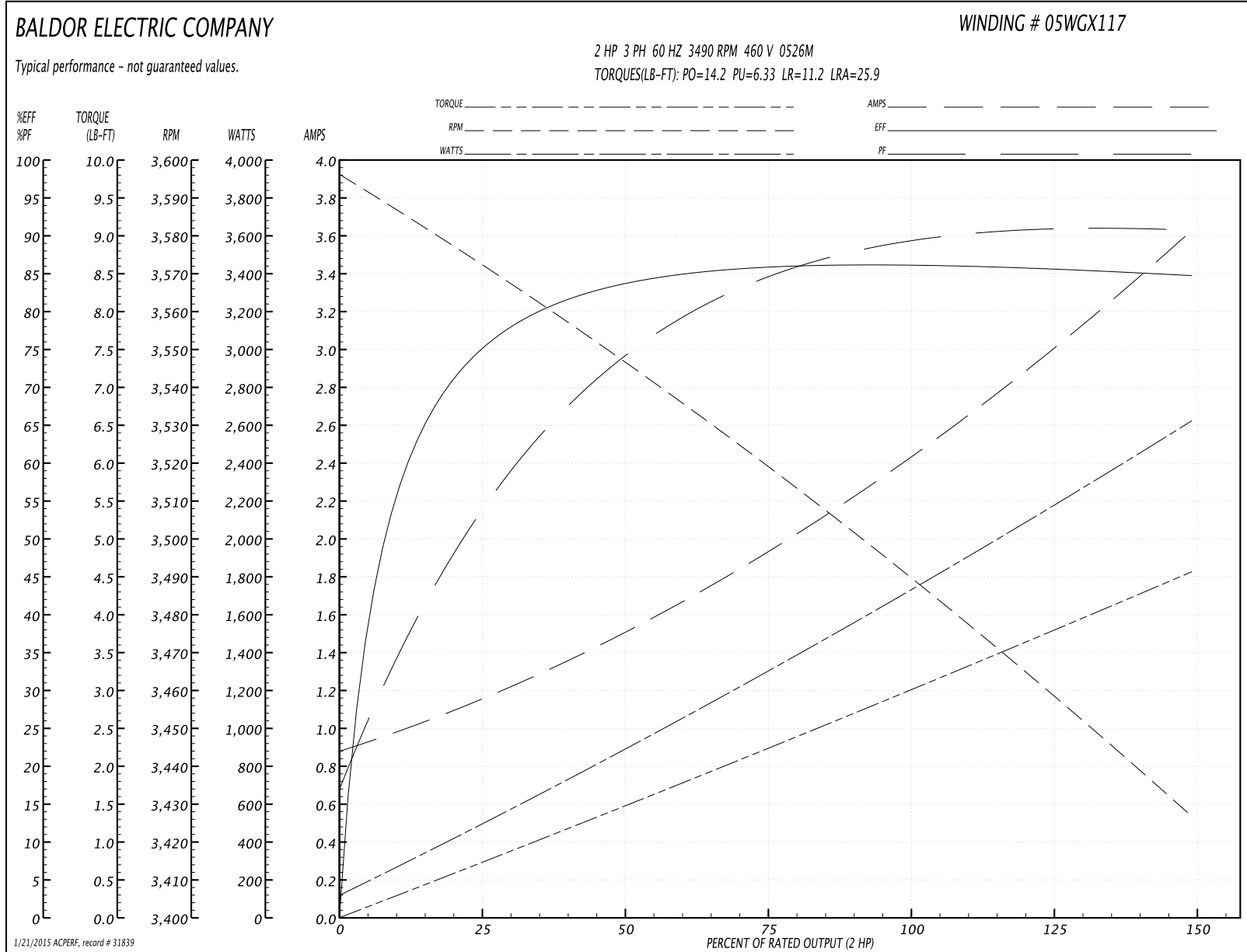
| | | |
|-------------------------------|--------------------|------------------------|
| Winding: 05WGX117-R001 | Type: 0526M | Enclosure: TEFC |
|-------------------------------|--------------------|------------------------|

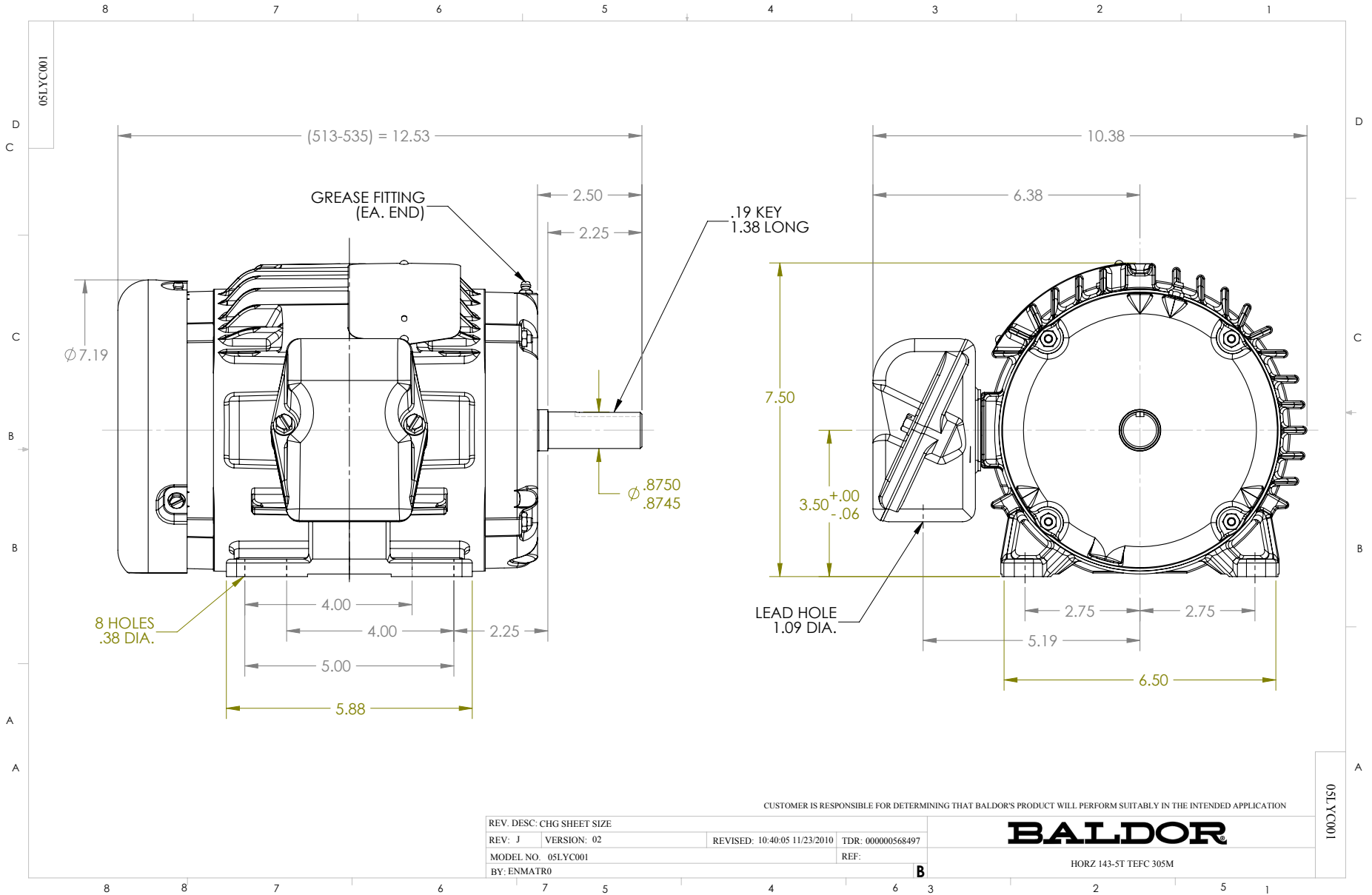
| Nameplate Data | | | | 460 V, 60 Hz: High Voltage Connection | |
|-----------------------|--------------|--------------|----|--|----------------|
| Rated Output (HP) | 2 | | | Full Load Torque | 2.98 LB-FT |
| Volts | 208-230/460 | | | Start Configuration | direct on line |
| Full Load Amps | 5.3-5/2.5 | | | Breakdown Torque | 14.2 LB-FT |
| R.P.M. | 3490 | | | Pull-up Torque | 6.33 LB-FT |
| Hz | 60 | Phase | 3 | Locked-rotor Torque | 11.2 LB-FT |
| NEMA Design Code | B | KVA Code | M | Starting Current | 25.9 A |
| Service Factor (S.F.) | 1.15 | | | No-load Current | 0.912 A |
| NEMA Nom. Eff. | 85.5 | Power Factor | 88 | Line-line Res. @ 25°C | 6.9119 Ω |
| Rating - Duty | 40C AMB-CONT | | | Temp. Rise @ Rated Load | 44°C |
| S.F. Amps | | | | Temp. Rise @ S.F. Load | 52°C |

Load Characteristics 460 V, 60 Hz, 2 HP

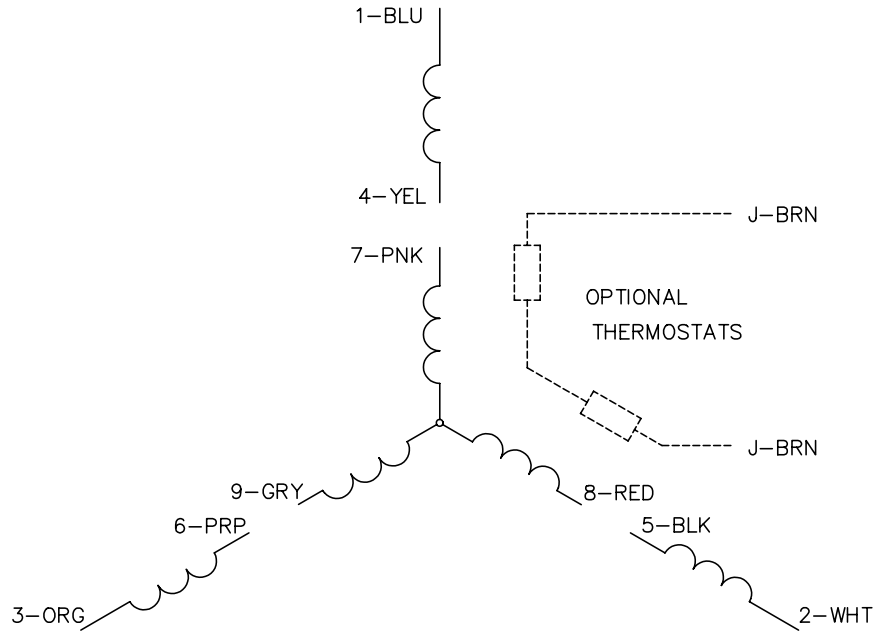
| % of Rated Load | 25 | 50 | 75 | 100 | 125 | 150 | S.F. |
|-----------------|--------|--------|--------|--------|--------|--------|------|
| Power Factor | 55 | 75 | 84 | 88 | 90 | 91 | 89 |
| Efficiency | 74.3 | 83.5 | 85.9 | 86.4 | 85.9 | 84.8 | 86.1 |
| Speed | 3571.7 | 3546.5 | 3520.2 | 3492.1 | 3460.7 | 3425.5 | 3473 |
| Line amperes | 1.1 | 1.47 | 1.93 | 2.44 | 3 | 3.61 | 2.78 |

Performance Graph at 460V, 60Hz, 2.0HP Typical performance - Not guaranteed values

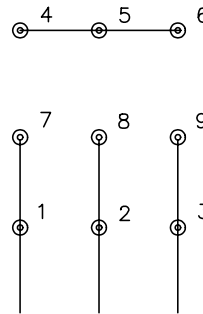




CD0005

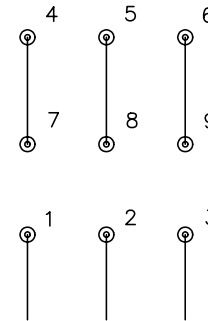


LOW VOLTAGE
(2Y)



LINE

HIGH VOLTAGE
(1Y)



LINE

NOTES:

1. INTERCHANGE ANY TWO LINE LEADS TO REVERSE ROTATION.
2. OPTIONAL THERMOSTATS ARE PROVIDED WHEN SPECIFIED.
3. ACTUAL NUMBER OF INTERNAL PARALLEL CIRCUITS MAY BE A MULTIPLE OF THOSE SHOWN ABOVE.
4. LEAD COLORS ARE OPTIONAL. LEADS MUST ALWAYS BE NUMBERED AS SHOWN.

| | | | |
|---|---------|-------------------------|--------------|
| REV. DESC: REVISE TO SHOW OPTIONAL COLORS | | | |
| REV. LTR: E | BY: JLP | REVISED: 01/19/99 10:15 | TDR: 0171435 |
| 90000 | | FILE: AAA00005140 | MDL: - |
| | | MTL: - | |

BALDOR ELECTRIC Co.

3PH, DV, 9 LEADS

CD0005