

# **BALDOR**® • **RELIANCE**

## **Product Information Packet**

# **EM3587T**

**2HP,1750RPM,3PH,60HZ,145T,0527M,TEFC,F1**

Part Detail							
Revision:	M	Status:	PRD/A	Change #:		Proprietary:	No
Type:	AC	Prod. Type:	0527M	Elec. Spec:	05WGX095	CD Diagram:	CD0005
Enclosure:	TEFC	Mfg Plant:		Mech. Spec:	05C001	Layout:	05LYC001
Frame:	145T	Mounting:	F1	Poles:	04	Created Date:	04-26-2010
Base:	RG	Rotation:	R	Insulation:	F	Eff. Date:	07-03-2014
Leads:	9#18					Replaced By:	
Literature:		Elec. Diagram:					

Nameplate NP1259L						
CAT.NO.	EM3587T					
SPEC.	05C001X095E7					
HP	2					
VOLTS	208-230/460					
AMP	5.8/2.9					
RPM	1750					
FRAME	145T	HZ	60	PH	3	
SER.F.	1.15	CODE	L	DES	B	CL F
NEMA-NOM-EFF	86.5	PF	75			
RATING	40C AMB-CONT					
CC	010A	USABLE AT 208V				
DE	6205	ODE	6203			
ENCL	TEFC	SN				

**AC Induction Motor Performance Data**

Record # 32606 - Typical performance - not guaranteed values

<b>Winding:</b> 05WGX095-R001	<b>Type:</b> 0527M	<b>Enclosure:</b> TEFC
-------------------------------	--------------------	------------------------

Nameplate Data				460 V, 60 Hz: High Voltage Connection	
Rated Output (HP)	2			Full Load Torque	5.95 LB-FT
Volts	208-230/460			Start Configuration	direct on line
Full Load Amps	5.8/2.9			Breakdown Torque	25.5 LB-FT
R.P.M.	1750			Pull-up Torque	15.7 LB-FT
Hz	60	Phase	3	Locked-rotor Torque	19.1 LB-FT
NEMA Design Code	B	KVA Code	L	Starting Current	25 A
Service Factor (S.F.)	1.15			No-load Current	1.73 A
NEMA Nom. Eff.	86.5	Power Factor	75	Line-line Res. @ 25°C	7.59 Ω
Rating - Duty	40C AMB-CONT			Temp. Rise @ Rated Load	47°C
S.F. Amps				Temp. Rise @ S.F. Load	56°C

Load Characteristics 460 V, 60 Hz, 2 HP

% of Rated Load	25	50	75	100	125	150	S.F.
Power Factor	32	53	66	75	80	83	78
Efficiency	76.7	85.1	87.1	87.3	86.7	85.7	86.9
Speed	1790.5	1780.1	1769.8	1758.6	1746.4	1733.5	1751
Line amperes	1.83	2.06	2.43	2.87	3.37	3.94	3.17

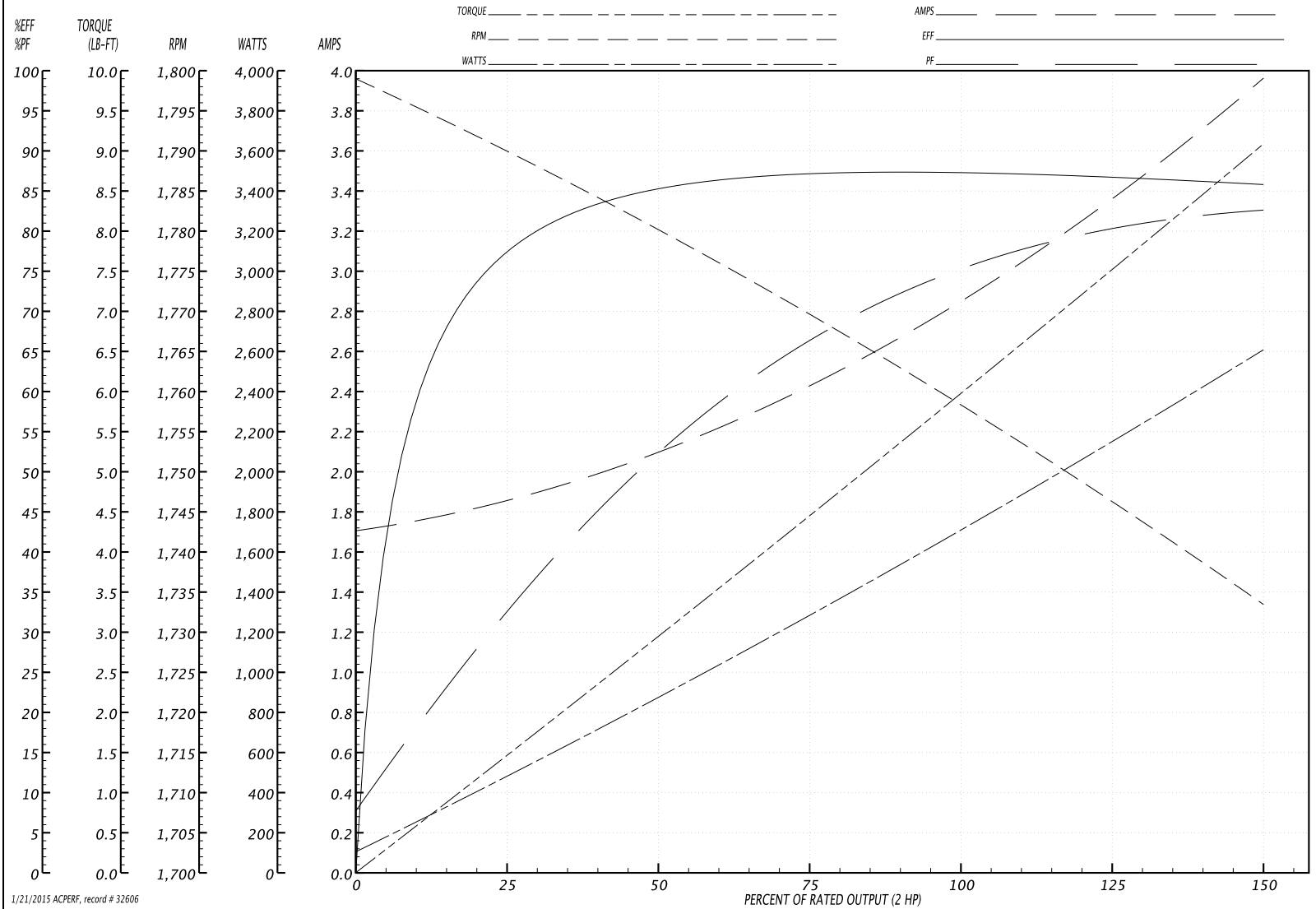
Performance Graph at 460V, 60Hz, 2.0HP Typical performance - Not guaranteed values

**BALDOR ELECTRIC COMPANY**

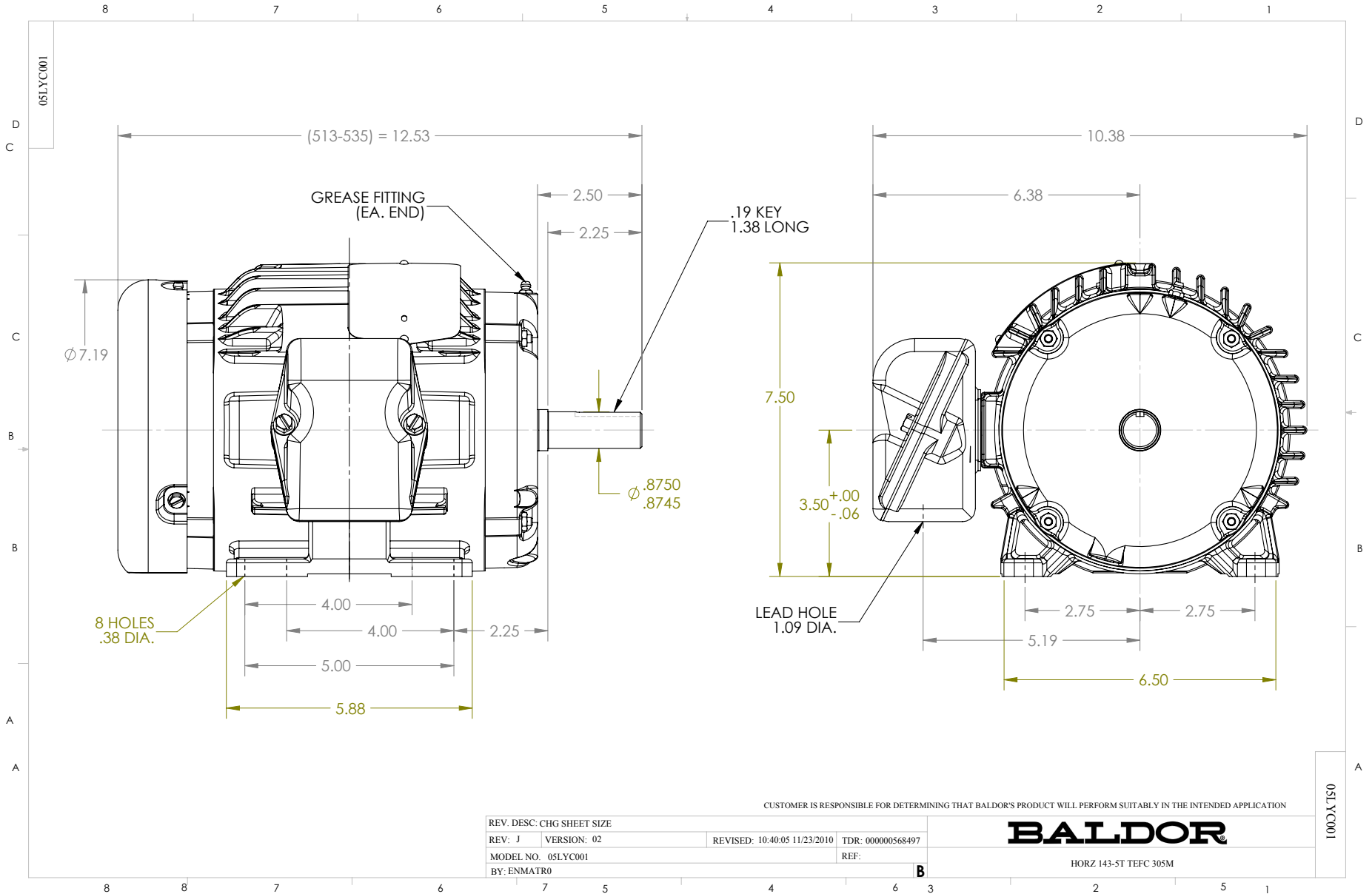
WINDING # 05WGX095

Typical performance - not guaranteed values.

2 HP 3 PH 60 HZ 1750 RPM 460 V 0527M  
 TORQUES(LB-FT): PO=25.5 PU=15.7 LR=19.1 LRA=25



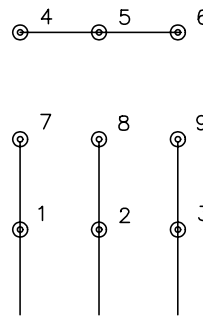
1/21/2015 ACPERF, record # 32606



CD0005

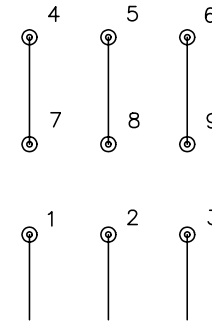


LOW VOLTAGE  
(2Y)



LINE

HIGH VOLTAGE  
(1Y)



LINE

NOTES:

1. INTERCHANGE ANY TWO LINE LEADS TO REVERSE ROTATION.
2. OPTIONAL THERMOSTATS ARE PROVIDED WHEN SPECIFIED.
3. ACTUAL NUMBER OF INTERNAL PARALLEL CIRCUITS MAY BE A MULTIPLE OF THOSE SHOWN ABOVE.
4. LEAD COLORS ARE OPTIONAL. LEADS MUST ALWAYS BE NUMBERED AS SHOWN.

REV. DESC: REVISE TO SHOW OPTIONAL COLORS			
REV. LTR: E	BY: JLP	REVISED: 01/19/99 10:15	TDR: 0171435
9000D		FILE: AAA00005140	MDL: -
		MTL: -	

**BALDOR ELECTRIC Co.**

3PH, DV, 9 LEADS

CD0005