

BALDOR® • ***RELIANCE***

Product Information Packet

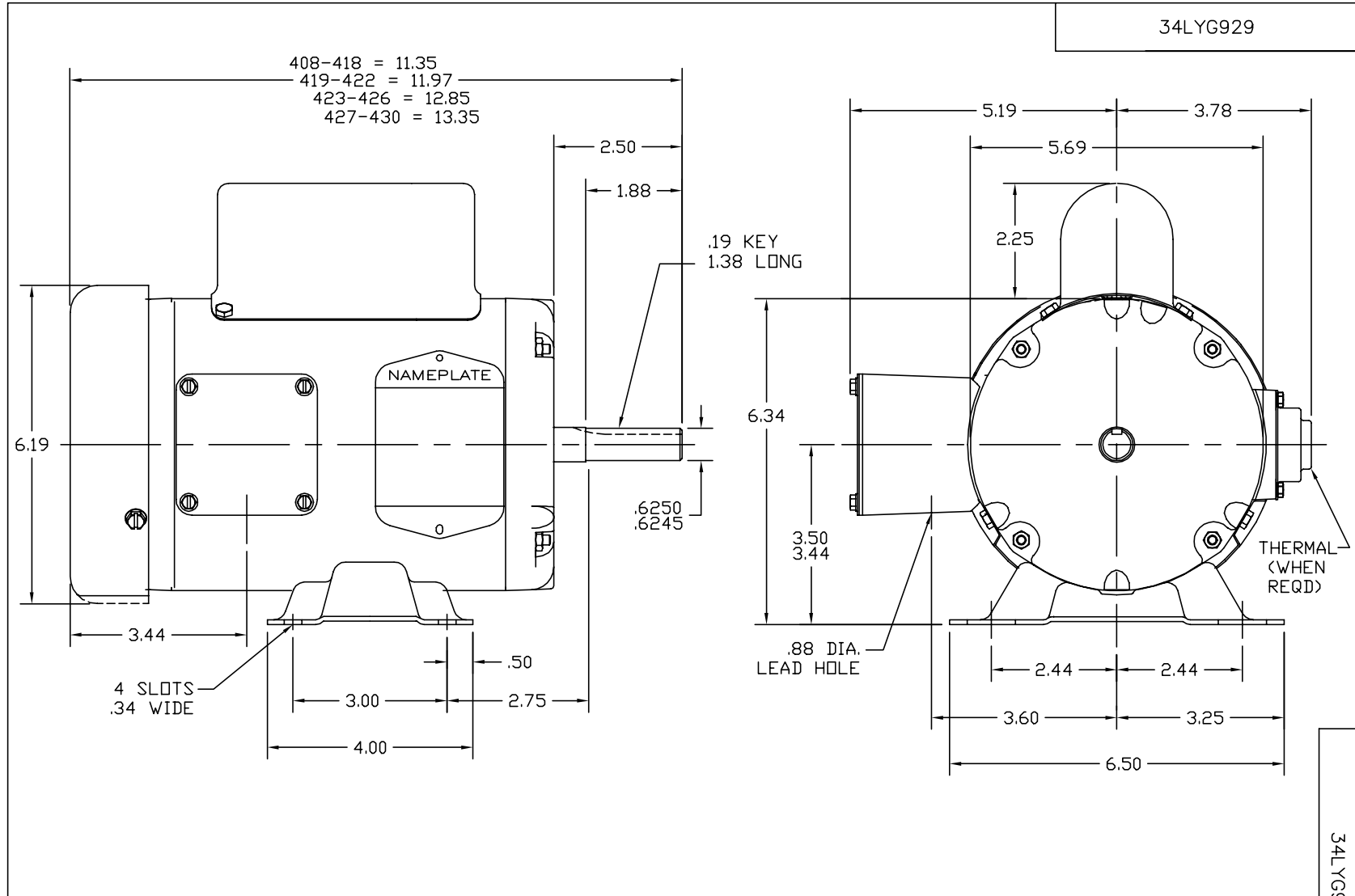
L3503

.5HP,3450RPM,1PH,60HZ,56,3413L,TEFC,F1

Part Detail							
Revision:	Q	Status:	PRD/A	Change #:		Proprietary:	No
Type:	AC	Prod. Type:	3413L	Elec. Spec:	34WGX716	CD Diagram:	CD0001
Enclosure:	TEFC	Mfg Plant:		Mech. Spec:	34G929	Layout:	34LYG929
Frame:	56	Mounting:	F1	Poles:	02	Created Date:	
Base:	RG	Rotation:	R	Insulation:	B	Eff. Date:	11-01-2013
Leads:	6#18					Replaced By:	
Literature:		Elec. Diagram:					

Nameplate NP1256L							
CAT.NO.	L3503						
SPEC.	34G929X716						
HP	.5						
VOLTS	115/230						
AMP	7/3.5						
RPM	3450						
FRAME	56	HZ	60	PH	1		
SER.F.	1.25	CODE	L	DES	N	CLASS	B
NEMA-NOM-EFF	66	PF	72				
RATING	40C AMB-CONT						
CC		USABLE AT 208V	4.1				
DE	6203	ODE	6203				
ENCL	TEFC	SN					
	SFA 8/4						

No performance data has been assigned to this product.



CUSTOMER IS RESPONSIBLE FOR DETERMINING THAT BALDOR'S PRODUCT WILL PERFORM SUITABLY IN THE INTENDED APPLICATION.

REV. DESC: UPDATE DESCRIPTION		
REV. LTR: B	VERSION: 02	TDR: 000000725714
FILE: \AAA\00026\859		REVISED: 01:09:20 12/15/2011
MTL: -		BY: ENVINWO

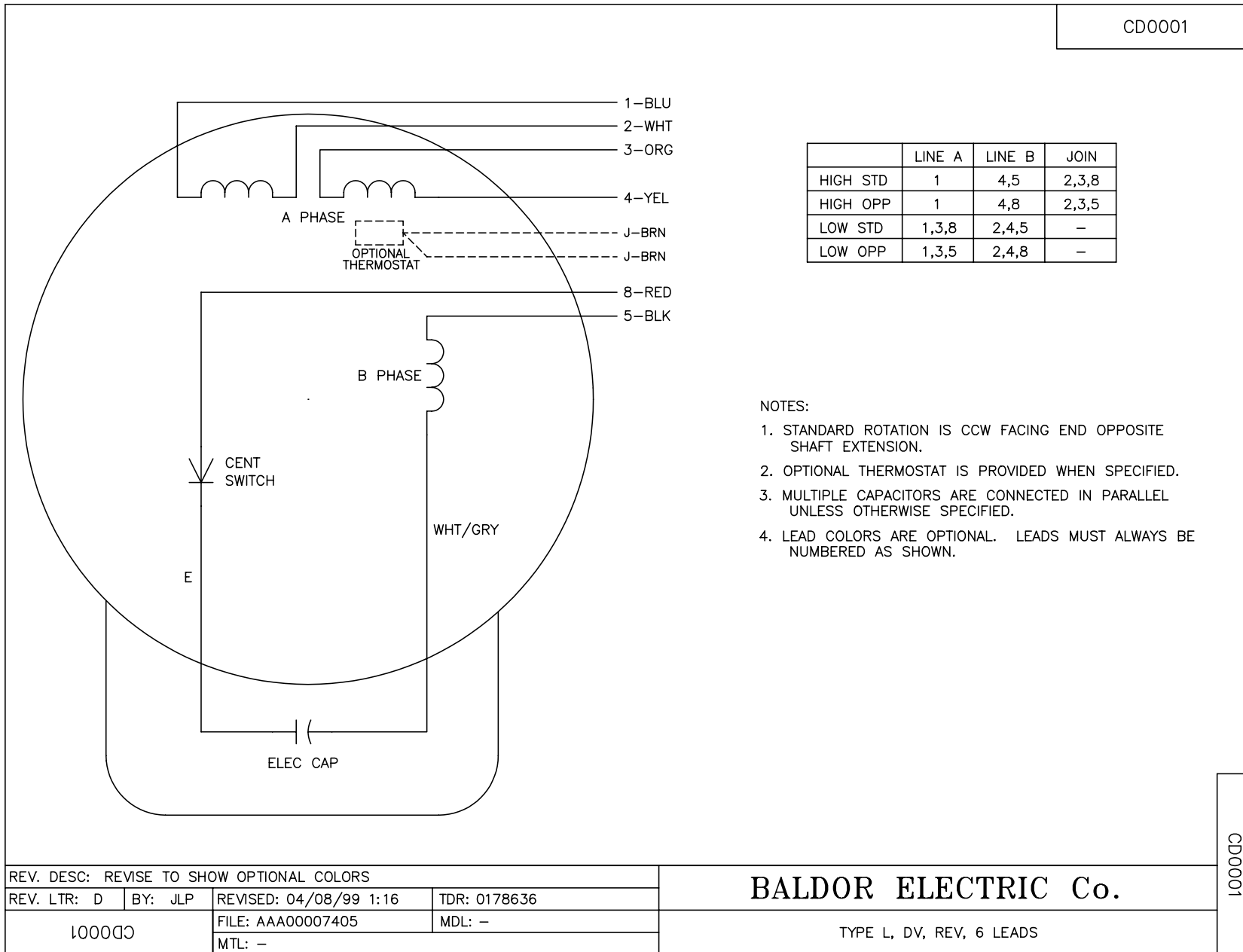
BALDOR

HORZ 34L NEMA 56 TEFC W/35 CAPAC BOX AND 3 PH ER

SH 1 of 1

34LYG929

CD0001



NOTES:

1. STANDARD ROTATION IS CCW FACING END OPPOSITE SHAFT EXTENSION.
2. OPTIONAL THERMOSTAT IS PROVIDED WHEN SPECIFIED.
3. MULTIPLE CAPACITORS ARE CONNECTED IN PARALLEL UNLESS OTHERWISE SPECIFIED.
4. LEAD COLORS ARE OPTIONAL. LEADS MUST ALWAYS BE NUMBERED AS SHOWN.

CD0001

REV. DESC: REVISE TO SHOW OPTIONAL COLORS			
REV. LTR: D	BY: JLP	REVISED: 04/08/99 1:16	TDR: 0178636
100000		FILE: AAA00007405	MDL: -
		MTL: -	

BALDOR ELECTRIC Co.

TYPE L, DV, REV, 6 LEADS