

BALDOR® • **RELIANCE**

Product Information Packet

L3605M

2HP,1725RPM,1PH,60HZ,184,3628L,TEFC,F1

Part Detail							
Revision:	U	Status:	PRD/A	Change #:		Proprietary:	No
Type:	AC	Prod. Type:	3628L	Elec. Spec:	36WGX267	CD Diagram:	CD0269
Enclosure:	TEFC	Mfg Plant:		Mech. Spec:	36C011	Layout:	36LYC011
Frame:	184	Mounting:	F1	Poles:	04	Created Date:	
Base:	RG	Rotation:	R	Insulation:	B	Eff. Date:	05-05-2011
Leads:	4#14 A&J,2#16 B PH,1#10 #4TH					Replaced By:	
Literature:		Elec. Diagram:					

Nameplate NP1257L						
CAT.NO.	L3605M					
SPEC.	36C11X267					
HP	2					
VOLTS	115/230					
AMP	23/11.5					
RPM	1725					
FRAME	184	HZ	60	PH	1	
SER.F.	1.15	CODE	H	DES	L	CL B
NEMA-NOM-EFF	75.5	PF	74			
RATING	40C AMB-CONT					
CC		USABLE AT 208V	11.7			
DE	6206	ODE	6205			
ENCL	TEFC	SN				

AC Induction Motor Performance Data

Record # 10935 - Typical performance - not guaranteed values

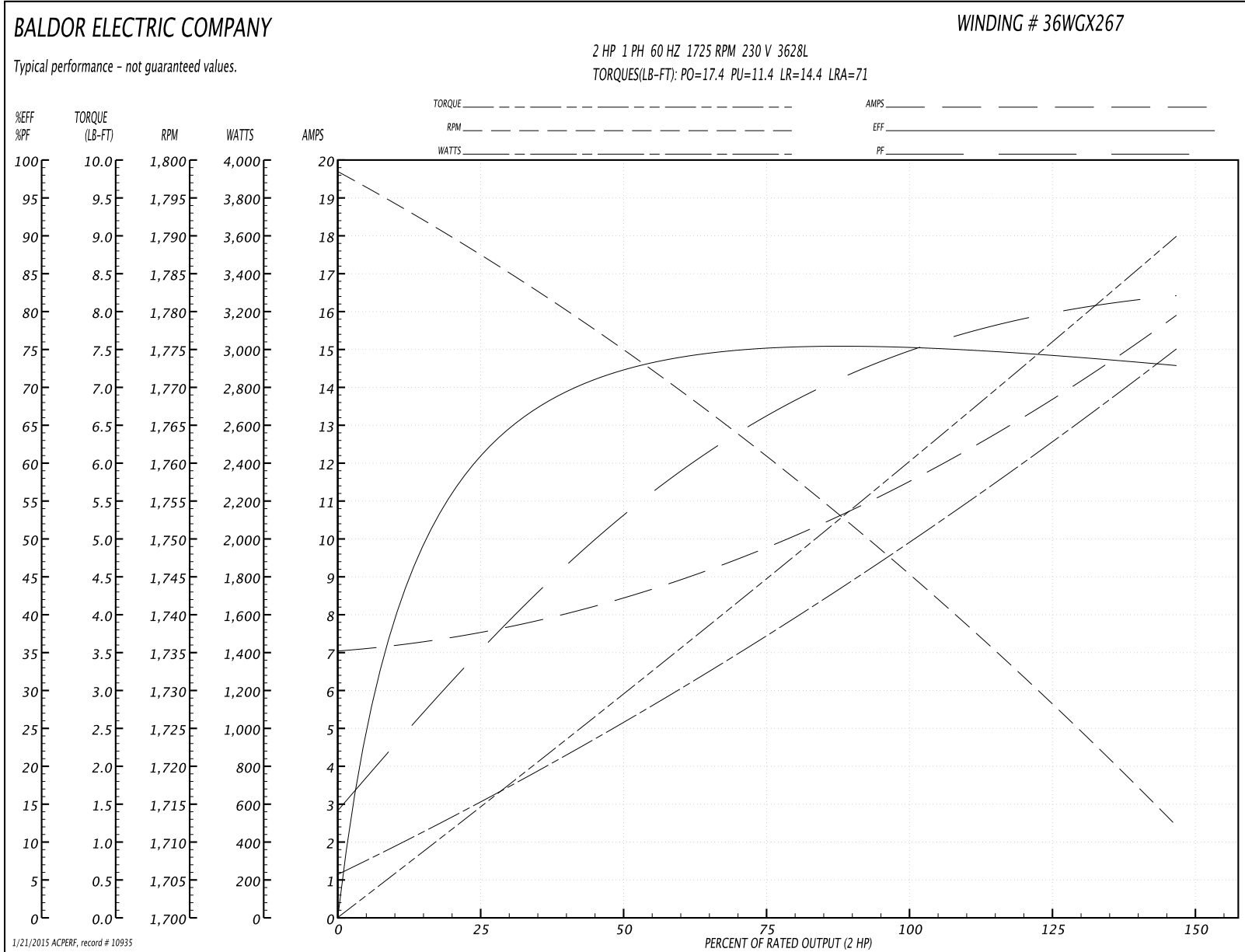
Winding: 36WGX267-R001	Type: 3628L	Enclosure: TEFC
-------------------------------	--------------------	------------------------

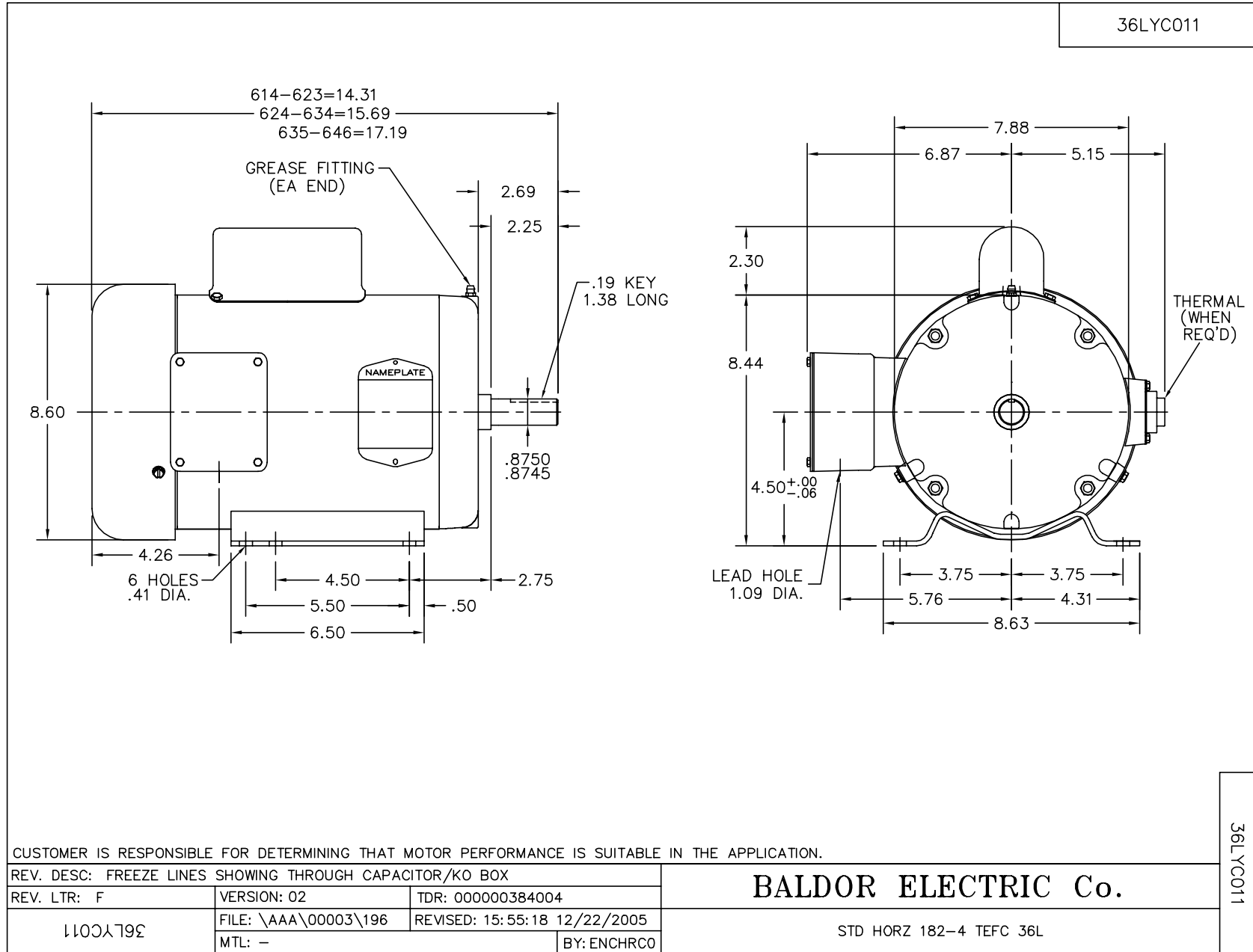
Nameplate Data				230 V, 60 Hz: High Voltage Connection	
Rated Output (HP)	2			Full Load Torque	6 LB-FT
Volts	115/230			Start Configuration	direct on line
Full Load Amps	23/11.5			Breakdown Torque	17.4 LB-FT
R.P.M.	1725			Pull-up Torque	11.4 LB-FT
Hz	60	Phase	1	Locked-rotor Torque	14.4 LB-FT
NEMA Design Code	L	KVA Code	H	Starting Current	71 A
Service Factor (S.F.)	1.15			No-load Current	7.1 A
NEMA Nom. Eff.	75.5	Power Factor	74	Line-line Res. @ 25°C	0.96 Ω A Ph 1.14 Ω B Ph
Rating - Duty	40C AMB-CONT			Temp. Rise @ Rated Load	75°C
S.F. Amps				Temp. Rise @ S.F. Load	92°C

Load Characteristics 230 V, 60 Hz, 2 HP

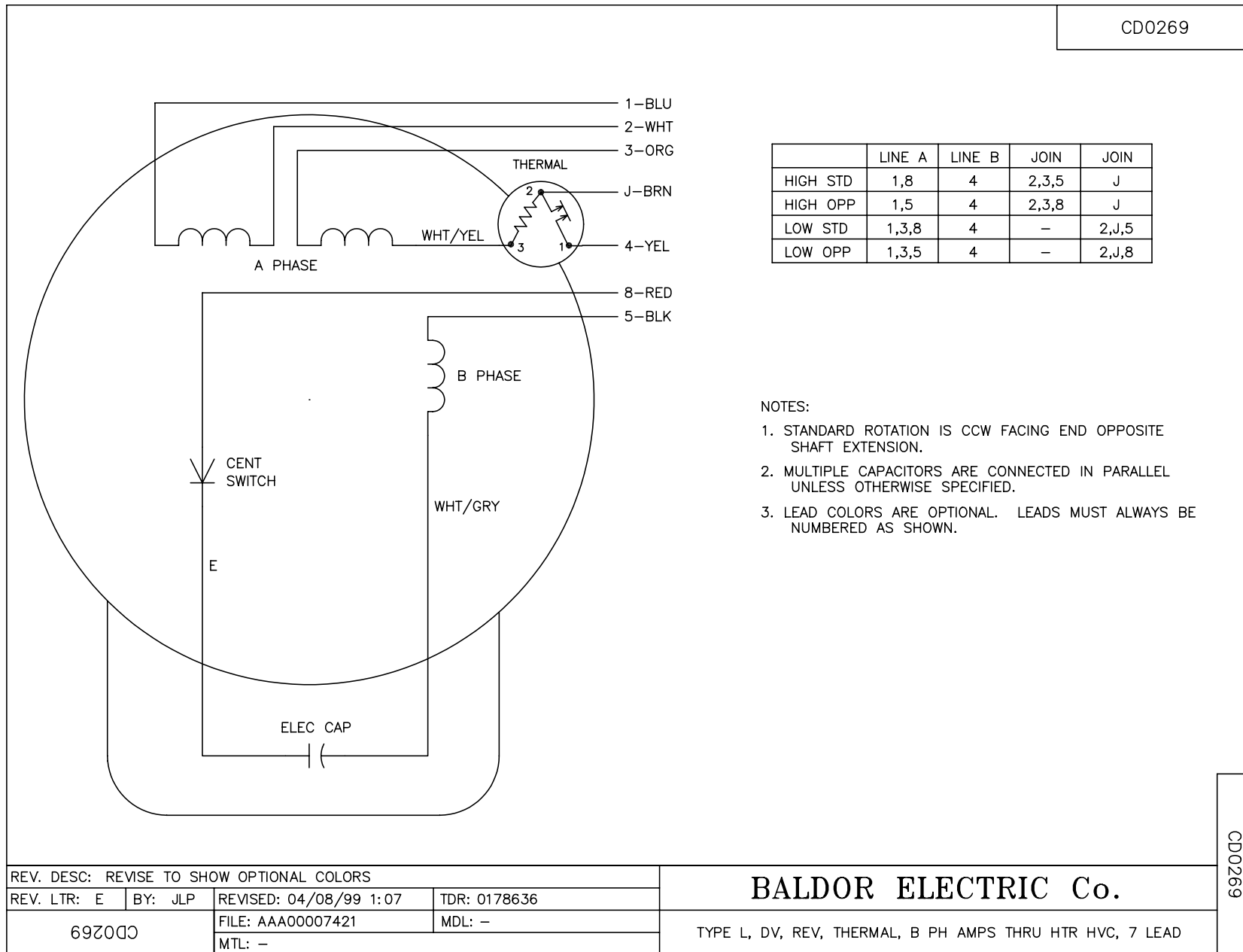
% of Rated Load	25	50	75	100	125	150	S.F.
Power Factor	37	54	66	74	78	80	77
Efficiency	61	73	75	75.5	74	73	74.5
Speed	1788	1775	1760	1745	1730	1712	1725
Line amperes	7.5	8.4	9.8	11.5	13.7	15.8	12.8

Performance Graph at 230V, 60Hz, 2.0HP Typical performance - Not guaranteed values





CD0269



NOTES:

1. STANDARD ROTATION IS CCW FACING END OPPOSITE SHAFT EXTENSION.
2. MULTIPLE CAPACITORS ARE CONNECTED IN PARALLEL UNLESS OTHERWISE SPECIFIED.
3. LEAD COLORS ARE OPTIONAL. LEADS MUST ALWAYS BE NUMBERED AS SHOWN.

REV. DESC: REVISE TO SHOW OPTIONAL COLORS			
REV. LTR: E	BY: JLP	REVISED: 04/08/99 1:07	TDR: 0178636
692000		FILE: AAA00007421	MDL: -
		MTL: -	

BALDOR ELECTRIC Co.

TYPE L, DV, REV, THERMAL, B PH AMPS THRU HTR HVC, 7 LEAD

CD0269