

# **BALDOR**® • *RELIANCE*

## **Product Information Packet**

# **L3605TM**

**2HP, 1725RPM, 1PH, 60HZ, 182T, 3634L, TEFC, F1**

Part Detail							
Revision:	X	Status:	PRD/A	Change #:		Proprietary:	No
Type:	AC	Prod. Type:	3634L	Elec. Spec:	36WG0386	CD Diagram:	CD0008
Enclosure:	TEFC	Mfg Plant:		Mech. Spec:	36C001	Layout:	36LYC001
Frame:	182T	Mounting:	F1	Poles:	04	Created Date:	
Base:	RG	Rotation:	R	Insulation:	B	Eff. Date:	05-05-2011
Leads:	4#14 A&J,2#16 B PH,1#12 #4TH					Replaced By:	
Literature:		Elec. Diagram:					

Nameplate NP1257L						
CAT.NO.	L3605TM					
SPEC.	36C01-386					
HP	2					
VOLTS	115/230					
AMP	22/11					
RPM	1725					
FRAME	182T	HZ	60	PH	1	
SER.F.	1.00	CODE	K	DES	L	CL B
NEMA-NOM-EFF	75	PF	81			
RATING	40C AMB-CONT					
CC	USABLE AT 208V					
DE	6206	ODE	6205			
ENCL	TEFC	SN				

**AC Induction Motor Performance Data**

Record # 10471 - Typical performance - not guaranteed values

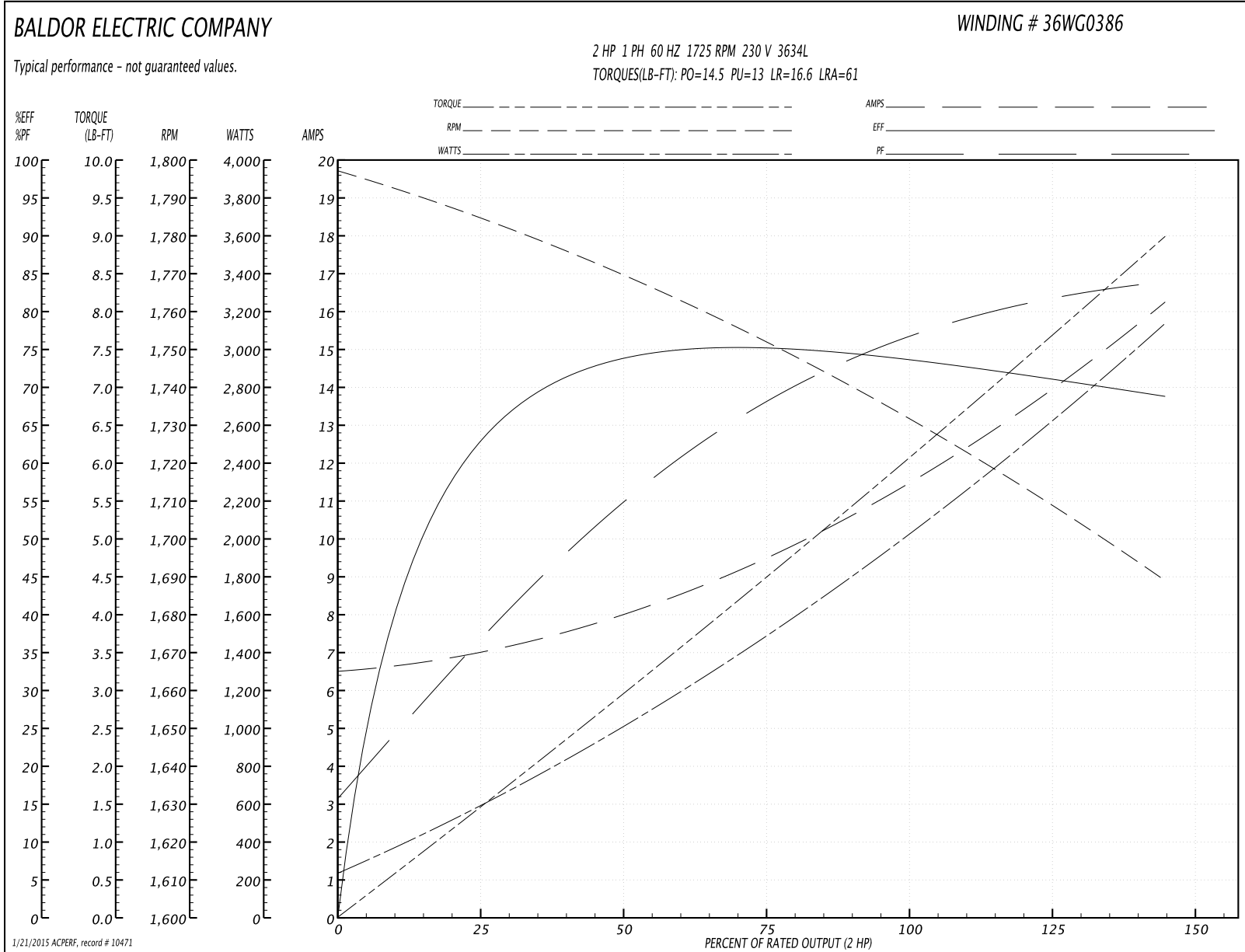
<b>Winding:</b> 36WG0386-R001	<b>Type:</b> 3634L	<b>Enclosure:</b> TEFC
-------------------------------	--------------------	------------------------

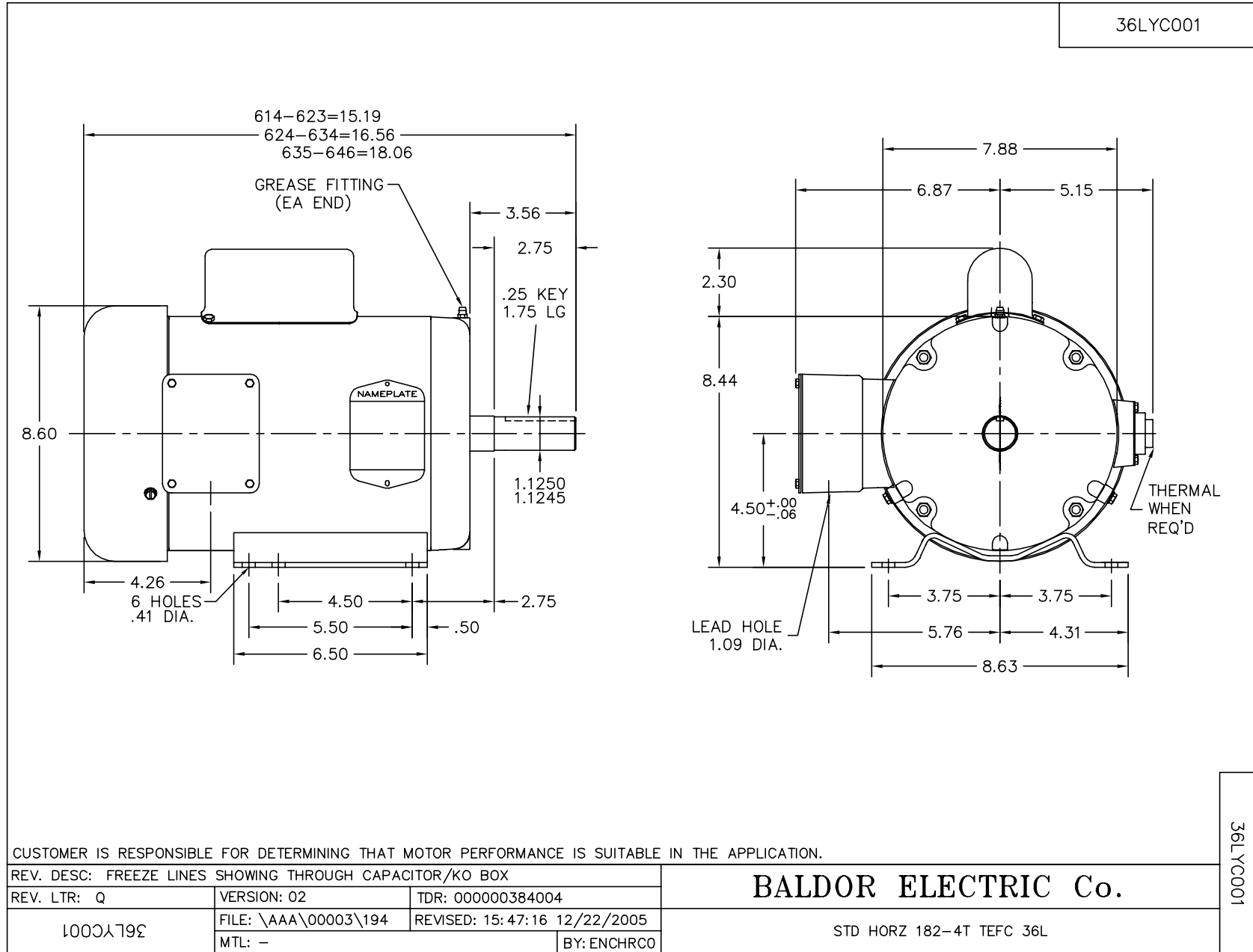
Nameplate Data				230 V, 60 Hz: High Voltage Connection	
Rated Output (HP)	2			Full Load Torque	6 LB-FT
Volts	115/230			Start Configuration	direct on line
Full Load Amps	22/11			Breakdown Torque	14.5 LB-FT
R.P.M.	1725			Pull-up Torque	13 LB-FT
Hz	60	Phase	1	Locked-rotor Torque	16.6 LB-FT
NEMA Design Code	L	KVA Code	K	Starting Current	61 A
Service Factor (S.F.)	1			No-load Current	6.5 A
NEMA Nom. Eff.	75	Power Factor	81	Line-line Res. @ 25°C	0.244 Ω A Ph 0.632 Ω B Ph
Rating - Duty	40C AMB-CONT			Temp. Rise @ Rated Load	78°C

Load Characteristics 230 V, 60 Hz, 2 HP

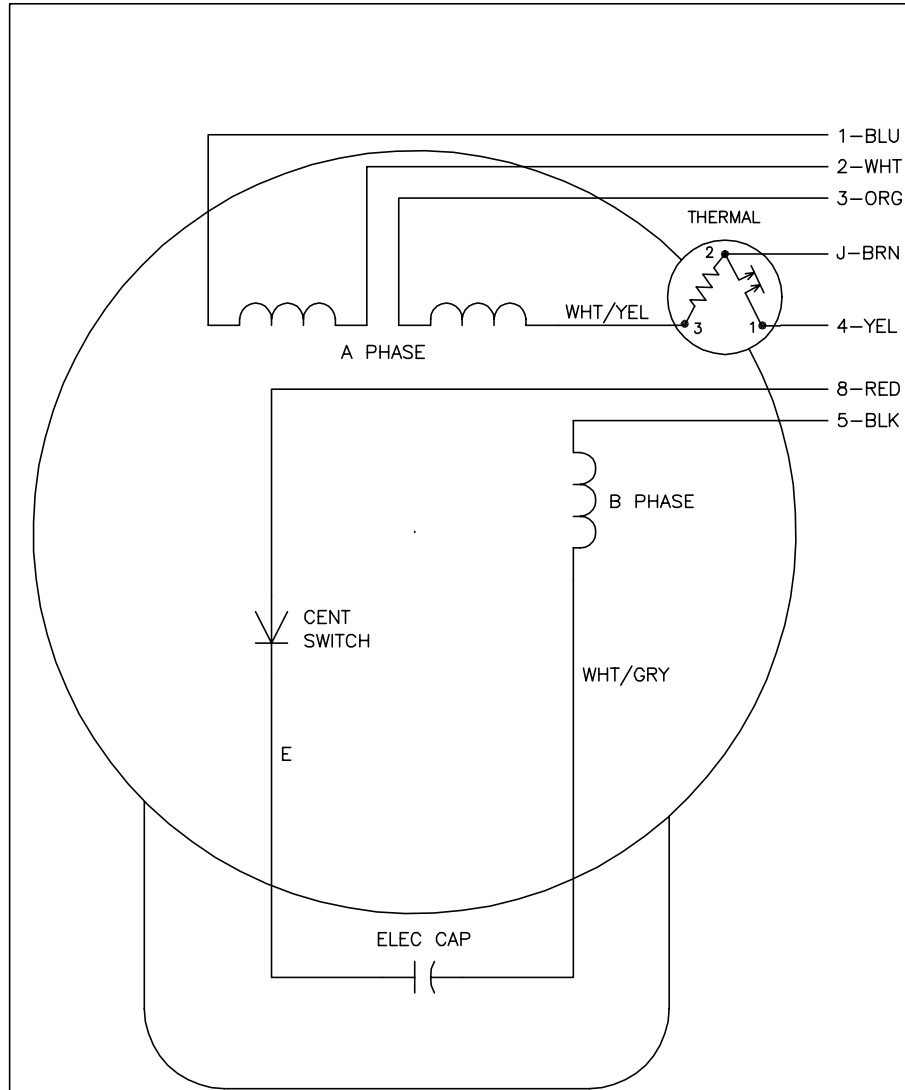
% of Rated Load	25	50	75	100	125	150
Power Factor	40	58	69	76	80	81
Efficiency	63.1	72.3	74.3	75	72	68.3
Speed	1783	1769	1753	1733	1711	1689
Line amperes	7	8.05	9.7	11	13.9	16.2

Performance Graph at 230V, 60Hz, 2.0HP Typical performance - Not guaranteed values





CD0008



	LINE A	LINE B	JOIN	JOIN
HIGH STD	1	4	2,3,8	J,5
HIGH OPP	1	4	2,3,5	J,8
LOW STD	1,3,8	4	-	2,J,5
LOW OPP	1,3,5	4	-	2,J,8

NOTES:

1. STANDARD ROTATION IS CCW FACING END OPPOSITE SHAFT EXTENSION.
2. MULTIPLE CAPACITORS ARE CONNECTED IN PARALLEL UNLESS OTHERWISE SPECIFIED.
3. LEAD COLORS ARE OPTIONAL. LEADS MUST ALWAYS BE NUMBERED AS SHOWN.

REV. DESC: REMOVE 2-TERMINAL THERMAL DETAIL, SEE CD0008A02		
REV. LTR: F	VERSION: 01	TDR: 000000360649
800000	FILE: \AAA\00007\408	REVISED: 10:56:54 04/18/2005
	MTL: -	BY: ENJOEPO

**BALDOR ELECTRIC Co.**

TYPE L, DV, REV, THERMAL, 7 LEADS

CD0008