

# **BALDOR**® • ***RELIANCE***

## **Product Information Packet**

# **M3617T**

**1HP,860RPM,3PH,60HZ,182T,3623M,TEFC,F1,N**

Part Detail							
Revision:	B	Status:	PRD/A	Change #:		Proprietary:	No
Type:	AC	Prod. Type:	3623M	Elec. Spec:	36WGT755	CD Diagram:	CD0005
Enclosure:	TEFC	Mfg Plant:		Mech. Spec:	36A001	Layout:	36LYA001
Frame:	182T	Mounting:	F1	Poles:	08	Created Date:	04-02-2013
Base:	RG	Rotation:	R	Insulation:	F	Eff. Date:	10-08-2013
Leads:	9#16					Replaced By:	
Literature:		Elec. Diagram:					

<b>Nameplate NP1256L</b>									
CAT.NO.	M3617T								
SPEC.	36A001T755H1								
HP	1								
VOLTS	208-230/460								
AMP	4.2-4.4/2.2								
RPM	860								
FRAME	182T	HZ	60	PH	3				
SER.F.	1.15	CODE	J	DES	B	CLASS	F		
NEMA-NOM-EFF	74	PF	56						
RATING	40C AMB-CONT								
CC	010A	USABLE AT 208V							
DE	6206	ODE	6205						
ENCL	TEFC	SN							

**AC Induction Motor Performance Data**

Record # 41803 - Typical performance - not guaranteed values

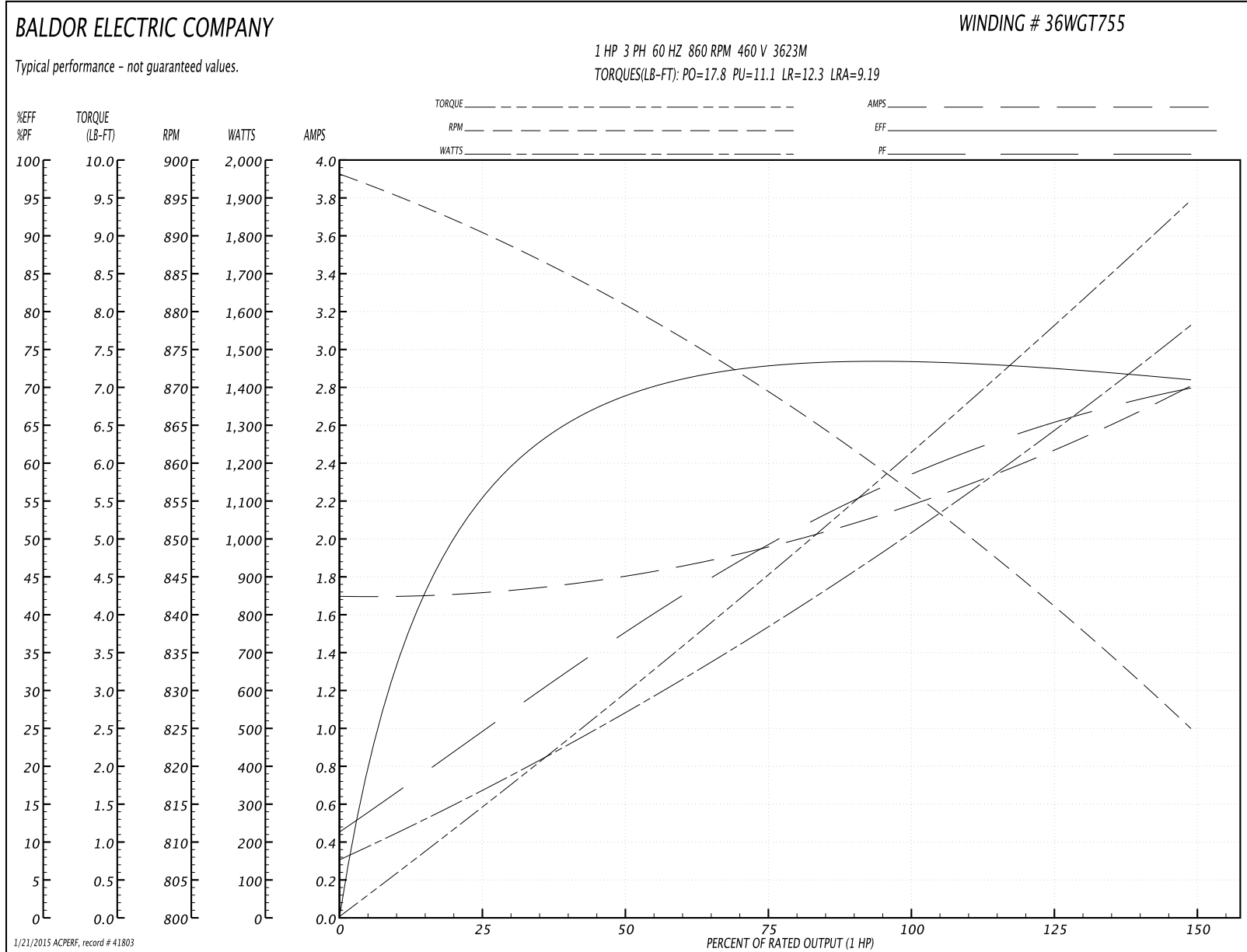
<b>Winding:</b> 36WGT755-R006	<b>Type:</b> 3623M	<b>Enclosure:</b> TEFC
-------------------------------	--------------------	------------------------

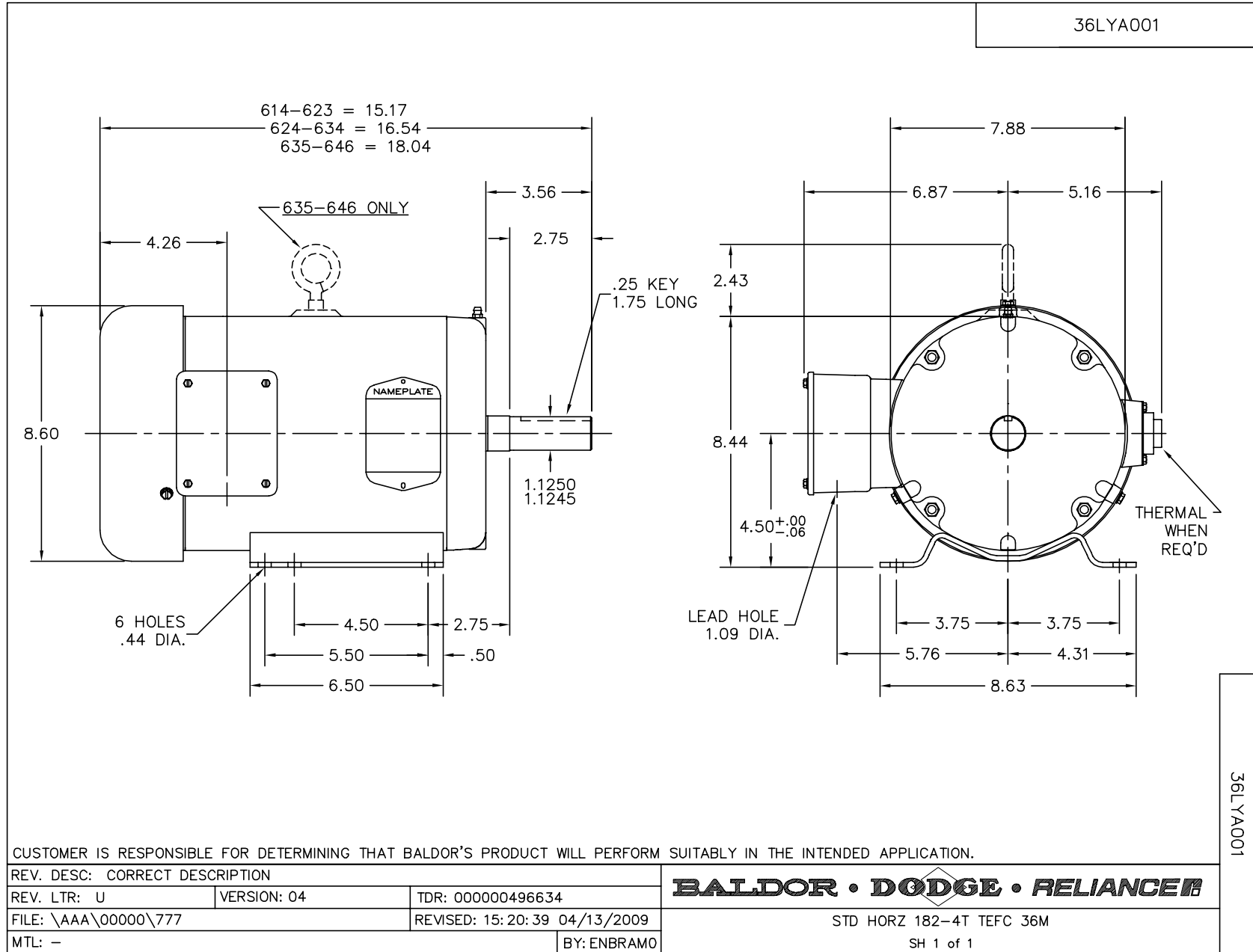
Nameplate Data				460 V, 60 Hz: High Voltage Connection	
Rated Output (HP)	1			Full Load Torque	6.11 LB-FT
Volts	208-230/460			Start Configuration	direct on line
Full Load Amps	4.2-4.4/2.2			Breakdown Torque	17.8 LB-FT
R.P.M.	860			Pull-up Torque	11.1 LB-FT
Hz	60	Phase	3	Locked-rotor Torque	12.3 LB-FT
NEMA Design Code	B	KVA Code	J	Starting Current	9.19 A
Service Factor (S.F.)	1.15			No-load Current	1.7 A
NEMA Nom. Eff.	74	Power Factor	56	Line-line Res. @ 25°C	18.4 Ω
Rating - Duty	40C AMB-CONT			Temp. Rise @ Rated Load	63°C
S.F. Amps				Temp. Rise @ S.F. Load	74°C
				Rotor inertia	0.216 LF <sup>2</sup>

Load Characteristics 460 V, 60 Hz, 1 HP

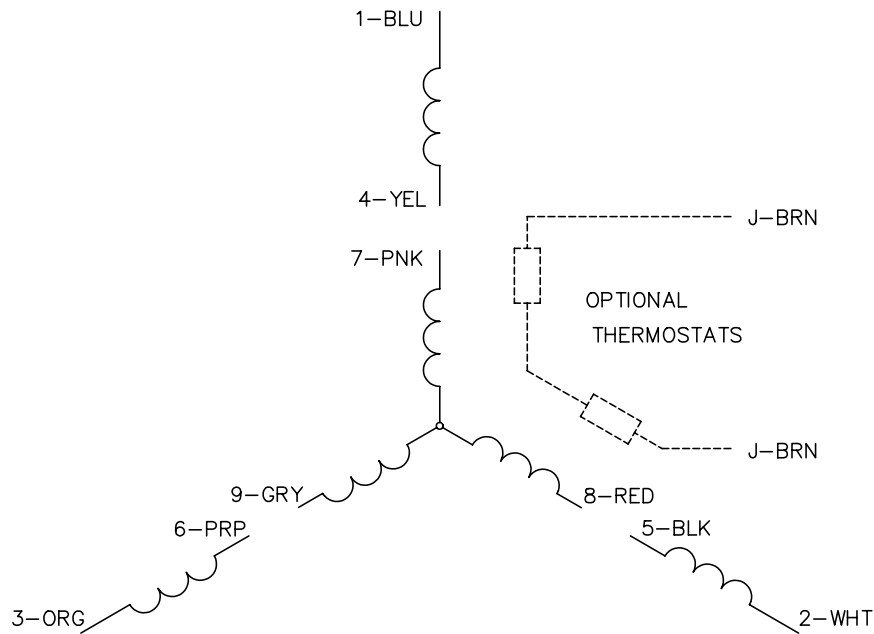
% of Rated Load	25	50	75	100	125	150	S.F.
Power Factor	25	38	49	58	65	70	62
Efficiency	54.5	68	72.7	73.9	73	70.8	73.4
Speed	890	880	869	858	842	824	848
Line amperes	1.71	1.8	1.96	2.18	2.46	2.81	2.35

Performance Graph at 460V, 60Hz, 1.0HP Typical performance - Not guaranteed values

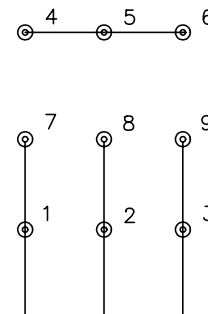




CD0005

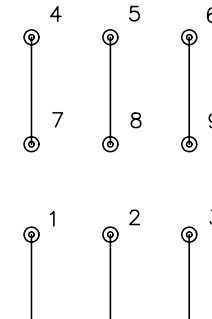


LOW VOLTAGE  
(2Y)



LINE

HIGH VOLTAGE  
(1Y)



LINE

NOTES:

1. INTERCHANGE ANY TWO LINE LEADS TO REVERSE ROTATION.
2. OPTIONAL THERMOSTATS ARE PROVIDED WHEN SPECIFIED.
3. ACTUAL NUMBER OF INTERNAL PARALLEL CIRCUITS MAY BE A MULTIPLE OF THOSE SHOWN ABOVE.
4. LEAD COLORS ARE OPTIONAL. LEADS MUST ALWAYS BE NUMBERED AS SHOWN.

REV. DESC: REVISE TO SHOW OPTIONAL COLORS			
REV. LTR: E	BY: JLP	REVISED: 01/19/99 10:15	TDR: 0171435
90000		FILE: AAA00005140	MDL: -
		MTL: -	

**BALDOR ELECTRIC Co.**

3PH, DV, 9 LEADS

CD0005