

BALDOR® • RELIANCE

Product Information Packet

M3702

2HP,855RPM,3PH,60HZ,215,3724M,TEFC,F1,N

Part Detail							
Revision:	D	Status:	PRD/A	Change #:		Proprietary:	No
Type:	AC	Prod. Type:	3724M	Elec. Spec:	37WGT938	CD Diagram:	CD0005
Enclosure:	TEFC	Mfg Plant:		Mech. Spec:	37A011	Layout:	37LYA011
Frame:	215	Mounting:	F1	Poles:	08	Created Date:	01-19-2007
Base:	RG	Rotation:	R	Insulation:	B	Eff. Date:	07-09-2011
Leads:	9#14					Replaced By:	
Literature:		Elec. Diagram:					

Nameplate NP1256L							
CAT.NO.	M3702						
SPEC.	37A011T938G1						
HP	2						
VOLTS	208-230/460						
AMP	7.6-7/3.5						
RPM	855						
FRAME	215	HZ	60	PH	3		
SER.F.	1.15	CODE	H	DES	B	CLASS	B
NEMA-NOM-EFF	82.5	PF	65				
RATING	40C AMB-CONT						
CC	010A	USABLE AT 208V					
DE	6307	ODE	6206				
ENCL	TEFC	SN					

AC Induction Motor Performance Data

Record # 37152 - Typical performance - not guaranteed values

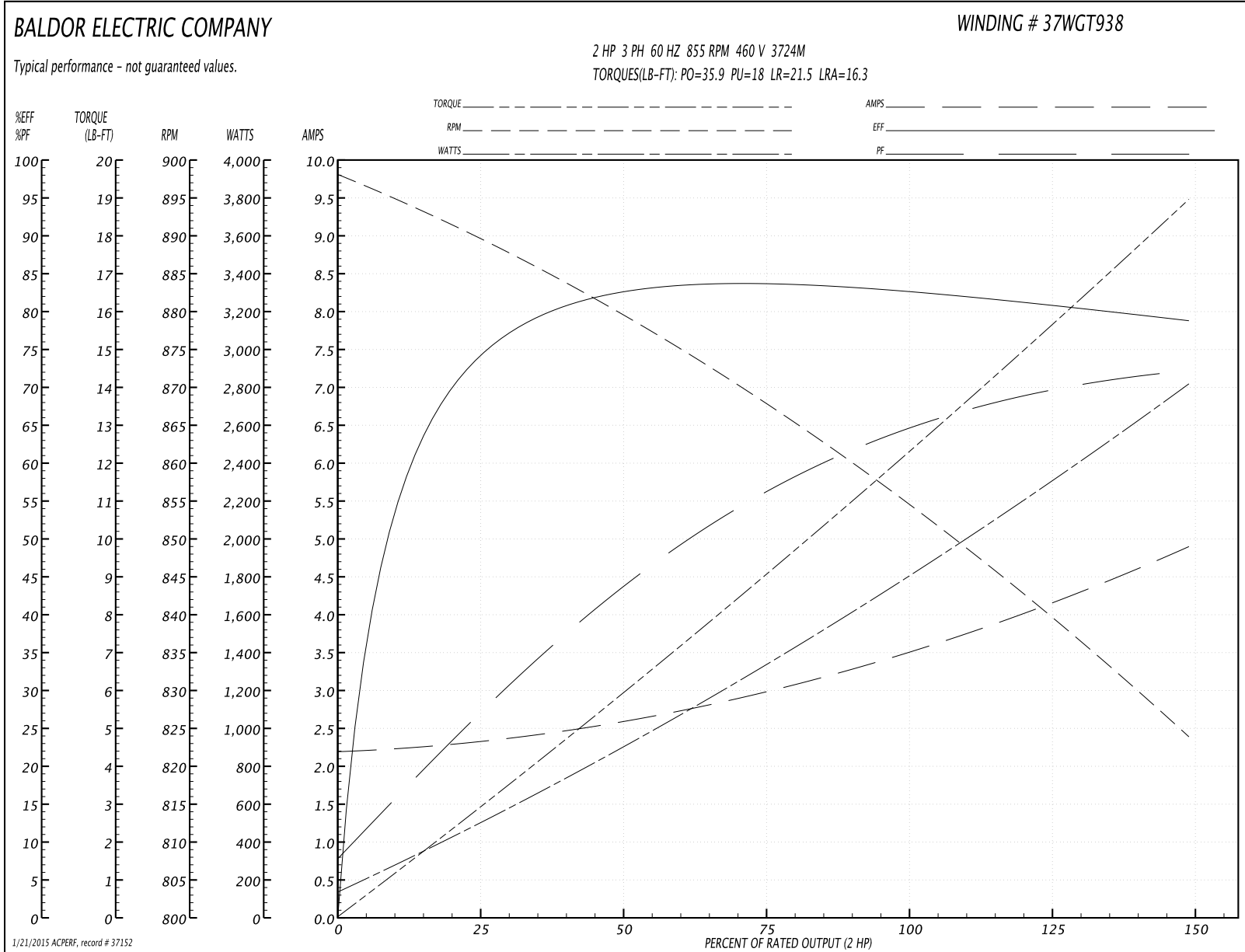
Winding: 37WGT938-R002	Type: 3724M	Enclosure: TEFC
-------------------------------	--------------------	------------------------

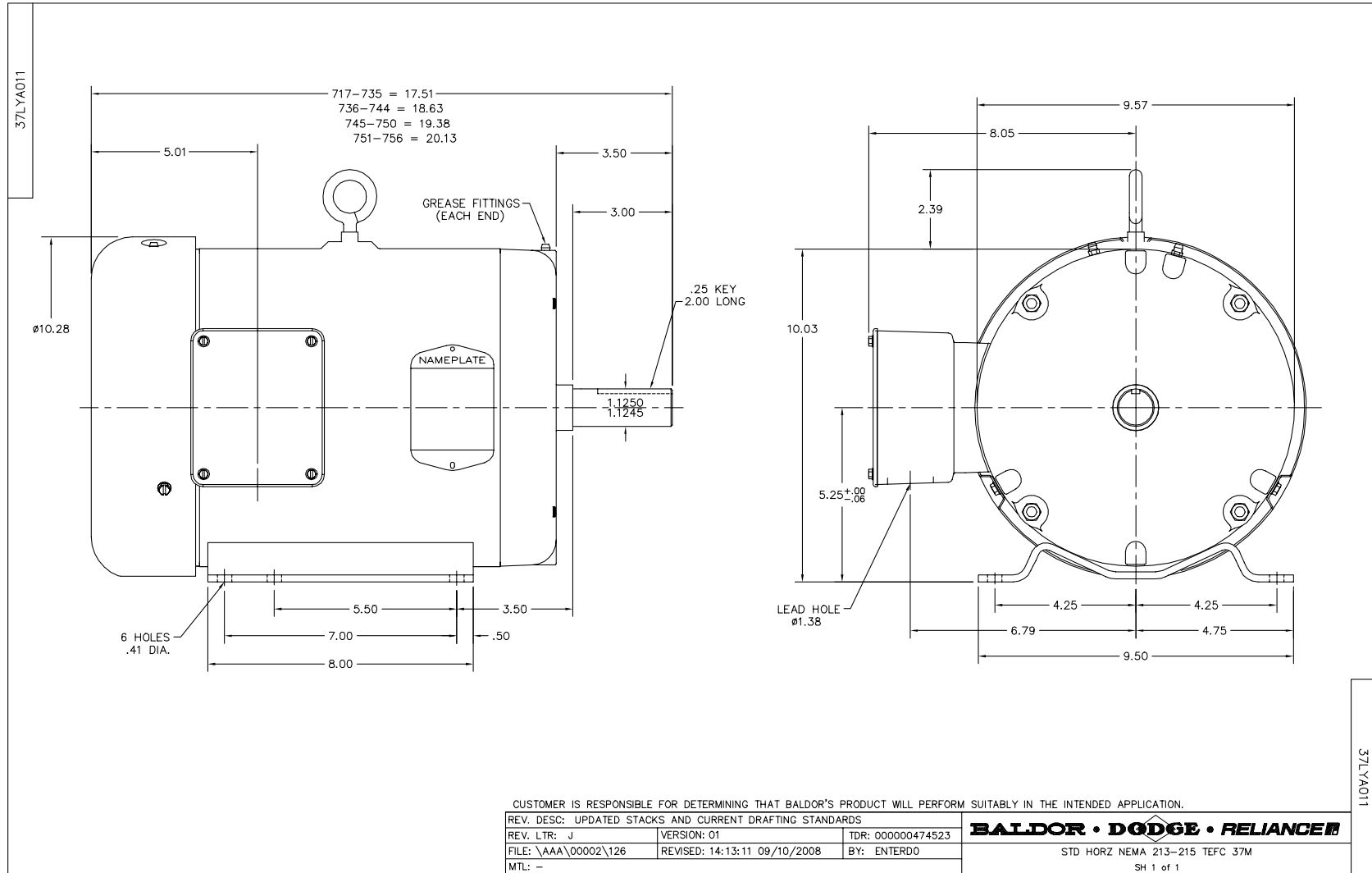
Nameplate Data				460 V, 60 Hz: High Voltage Connection	
Rated Output (HP)	2			Full Load Torque	12.2 LB-FT
Volts	208-230/460			Start Configuration	direct on line
Full Load Amps	7.6-7/3.5			Breakdown Torque	35.9 LB-FT
R.P.M.	855			Pull-up Torque	18 LB-FT
Hz	60	Phase	3	Locked-rotor Torque	21.5 LB-FT
NEMA Design Code	B	KVA Code	H	Starting Current	16.3 A
Service Factor (S.F.)	1.15			No-load Current	2.2 A
NEMA Nom. Eff.	82.5	Power Factor	65	Line-line Res. @ 25°C	6.98 Ω
Rating - Duty	40C AMB-CONT			Temp. Rise @ Rated Load	50°C
S.F. Amps				Temp. Rise @ S.F. Load	59°C
				Rotor inertia	0.597 LF ²

Load Characteristics 460 V, 60 Hz, 2 HP

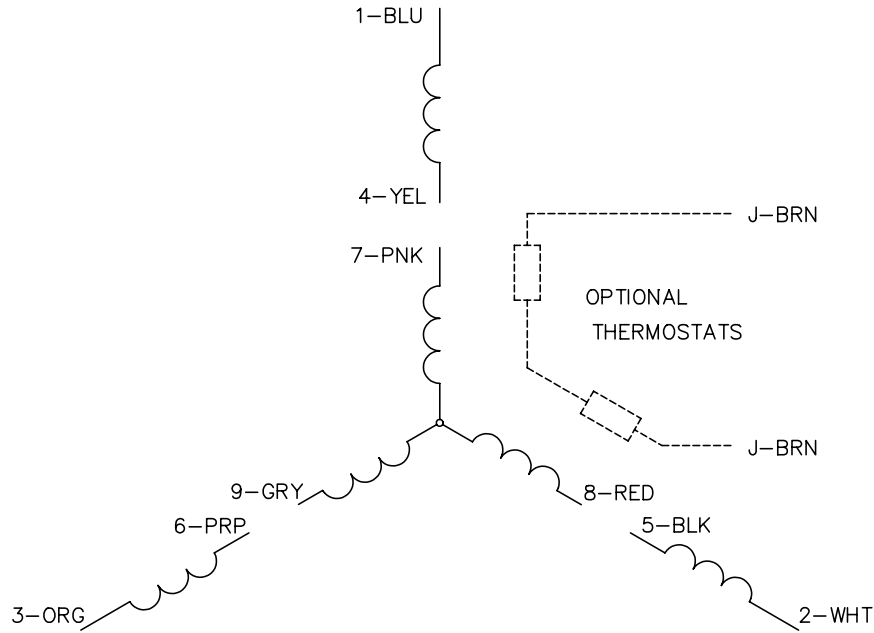
% of Rated Load	25	50	75	100	125	150	S.F.
Power Factor	28	44	56	64	69	73	67
Efficiency	72.2	80.8	83.3	83.6	81.7	78.3	82.5
Speed	889	879	868	856	841	823	847
Line amperes	2.3	2.59	2.99	3.49	4.11	4.91	3.86

Performance Graph at 460V, 60Hz, 2.0HP Typical performance - Not guaranteed values

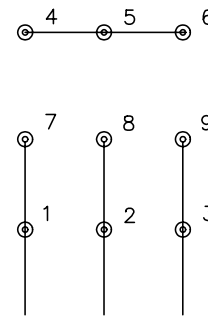




CD0005

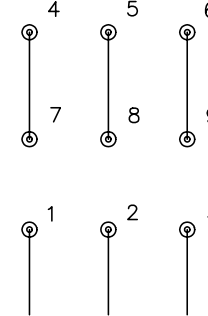


LOW VOLTAGE
(2Y)



LINE

HIGH VOLTAGE
(1Y)



LINE

NOTES:

1. INTERCHANGE ANY TWO LINE LEADS TO REVERSE ROTATION.
2. OPTIONAL THERMOSTATS ARE PROVIDED WHEN SPECIFIED.
3. ACTUAL NUMBER OF INTERNAL PARALLEL CIRCUITS MAY BE A MULTIPLE OF THOSE SHOWN ABOVE.
4. LEAD COLORS ARE OPTIONAL. LEADS MUST ALWAYS BE NUMBERED AS SHOWN.

REV. DESC: REVISE TO SHOW OPTIONAL COLORS			
REV. LTR: E	BY: JLP	REVISED: 01/19/99 10:15	TDR: 0171435
9000D		FILE: AAA00005140	MDL: -
		MTL: -	

BALDOR ELECTRIC Co.

3PH, DV, 9 LEADS

CD0005