

# **BALDOR**® • **RELIANCE**

## **Product Information Packet**

# **M3712**

**2HP,1165RPM,3PH,60HZ,213,3633M,TEFC,F1,N**

Part Detail							
Revision:	C	Status:	PRD/A	Change #:		Proprietary:	No
Type:	AC	Prod. Type:	3633M	Elec. Spec:	36WGS946	CD Diagram:	CD0005
Enclosure:	TEFC	Mfg Plant:		Mech. Spec:	36G890	Layout:	36LYG890
Frame:	213	Mounting:	F1	Poles:	06	Created Date:	07-23-2012
Base:	RG	Rotation:	R	Insulation:	F	Eff. Date:	10-16-2014
Leads:	9#16					Replaced By:	
Literature:		Elec. Diagram:					

<b>Nameplate NP1256L</b>									
CAT.NO.	M3712								
SPEC.	36G890S946H1								
HP	2								
VOLTS	208-230/460								
AMP	6.8/3.4								
RPM	1165								
FRAME	213	HZ	60	PH	3				
SER.F.	1.15	CODE	K	DES	B	CLASS	F		
NEMA-NOM-EFF	86.5	PF	65						
RATING	40C AMB-CONT								
CC	010A	USABLE AT 208V							
DE	6206	ODE	6205						
ENCL	TEFC	SN							

**AC Induction Motor Performance Data**

Record # 39219 - Typical performance - not guaranteed values

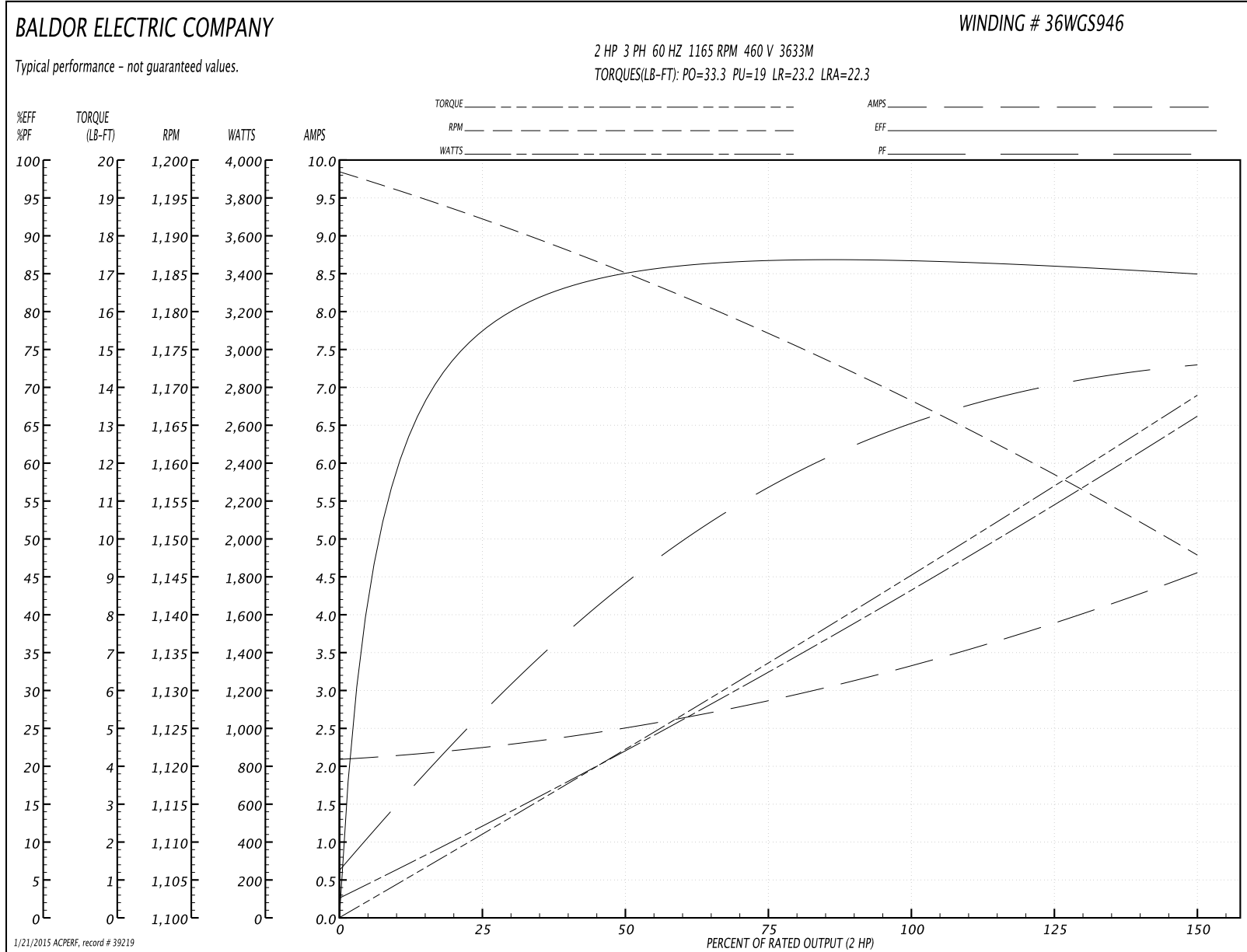
<b>Winding:</b> 36WGS946-R001	<b>Type:</b> 3633M	<b>Enclosure:</b> TEFC
-------------------------------	--------------------	------------------------

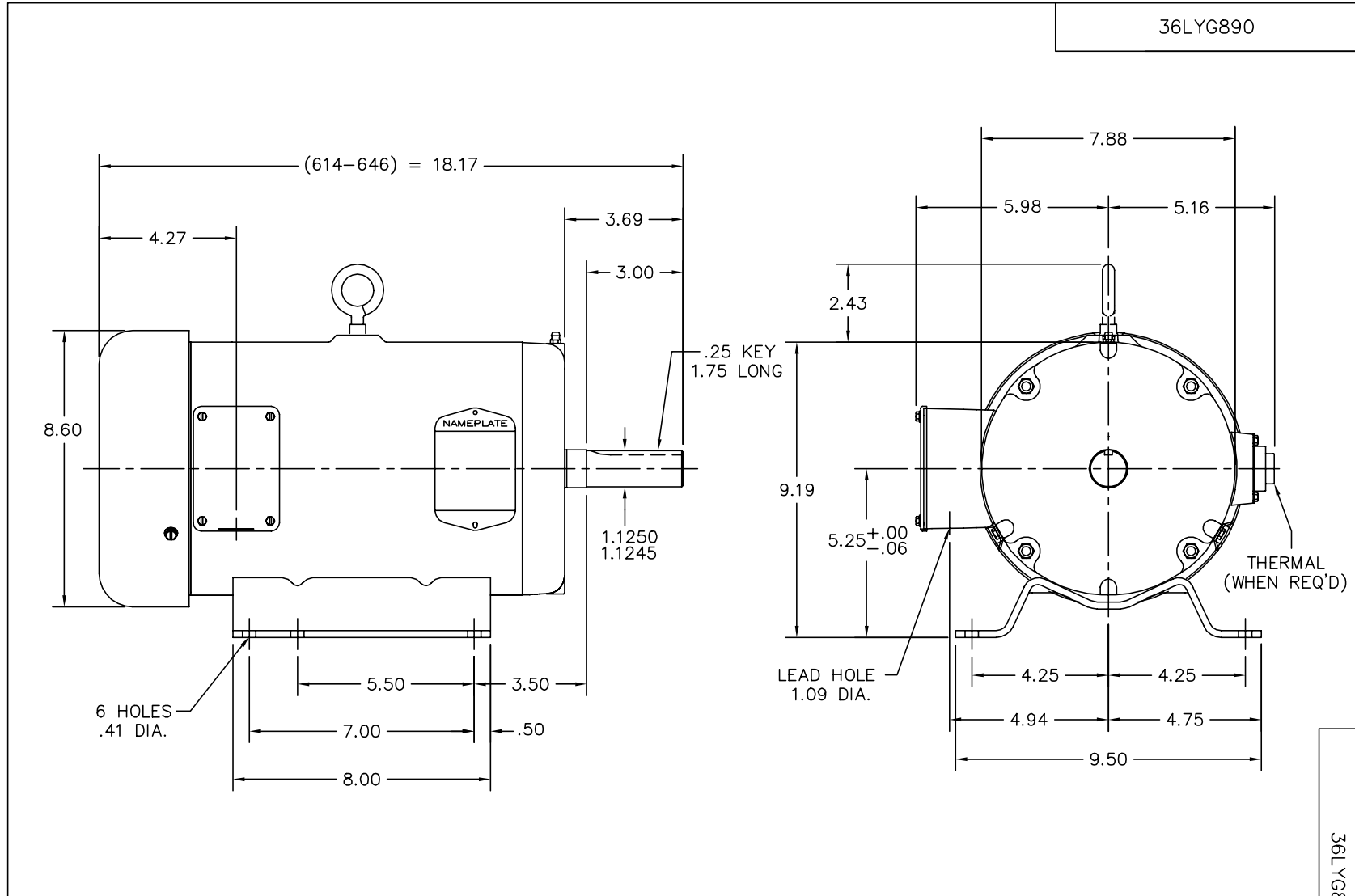
Nameplate Data				460 V, 60 Hz: High Voltage Connection	
Rated Output (HP)	2			Full Load Torque	9.02 LB-FT
Volts	208-230/460			Start Configuration	direct on line
Full Load Amps	6.8/3.4			Breakdown Torque	33.3 LB-FT
R.P.M.	1165			Pull-up Torque	19 LB-FT
Hz	60	Phase	3	Locked-rotor Torque	23.2 LB-FT
NEMA Design Code	B	KVA Code	K	Starting Current	22.3 A
Service Factor (S.F.)	1.15			No-load Current	2.11 A
NEMA Nom. Eff.	86.5	Power Factor	65	Line-line Res. @ 25°C	5.5787 Ω
Rating - Duty	40C AMB-CONT			Temp. Rise @ Rated Load	45°C
S.F. Amps				Temp. Rise @ S.F. Load	54°C
				Rotor inertia	0.31 LF <sup>2</sup>

Load Characteristics 460 V, 60 Hz, 2 HP

% of Rated Load	25	50	75	100	125	150	S.F.
Power Factor	28	45	57	64	70	73	68
Efficiency	77.4	85	86.8	86.8	86	84.7	86.3
Speed	1192.2	1184.8	1177	1168.4	1158.7	1147.7	1163
Line amperes	2.23	2.49	2.87	3.35	3.9	4.54	3.68

Performance Graph at 460V, 60Hz, 2.0HP Typical performance - Not guaranteed values





CUSTOMER IS RESPONSIBLE FOR DETERMINING THAT BALDOR'S PRODUCT WILL PERFORM SUITABLY IN THE INTENDED APPLICATION.

REV. DESC: UPDATE DRAWING		
REV. LTR: C	VERSION: 02	TDR: 000000499221
FILE: \AAA\00004\441	REVISED: 07:50:24 05/07/2009	
MTL: -	BY: ENALEMO	

**BALDOR • DODGE • RELIANCE**

HORZ 213-5 TEFC 36M

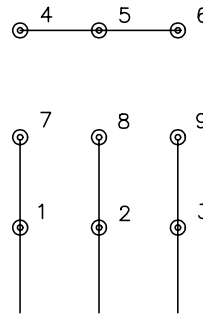
SH 1 of 1

36LYG890

CD0005

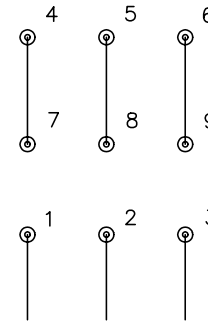


LOW VOLTAGE  
(2Y)



LINE

HIGH VOLTAGE  
(1Y)



LINE

NOTES:

1. INTERCHANGE ANY TWO LINE LEADS TO REVERSE ROTATION.
2. OPTIONAL THERMOSTATS ARE PROVIDED WHEN SPECIFIED.
3. ACTUAL NUMBER OF INTERNAL PARALLEL CIRCUITS MAY BE A MULTIPLE OF THOSE SHOWN ABOVE.
4. LEAD COLORS ARE OPTIONAL. LEADS MUST ALWAYS BE NUMBERED AS SHOWN.

REV. DESC: REVISE TO SHOW OPTIONAL COLORS			
REV. LTR: E	BY: JLP	REVISED: 01/19/99 10:15	TDR: 0171435
900000		FILE: AAA00005140	MDL: -
		MTL: -	

**BALDOR ELECTRIC Co.**

3PH, DV, 9 LEADS

CD0005