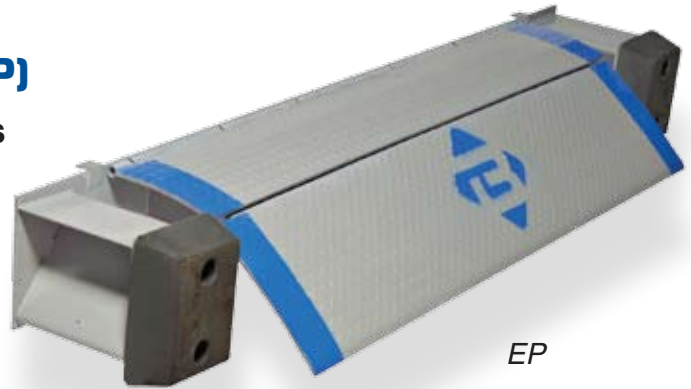




## Dock Levelers

### EZ-PULL EDGE OF DOCK LEVELER (EP)

- Capacities from 20,000 to 30,000 pounds
- Widths of 66", 72" & 78"
- Automatically returns to stored position when truck leaves
- Self-storing handle
- Refrigerated lip optional
- Bumper and bumper blocks are included
- Steel faced bumpers available
- Hydraulic Assist available



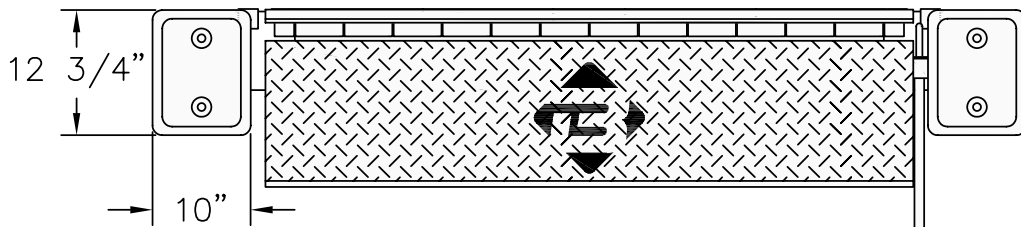
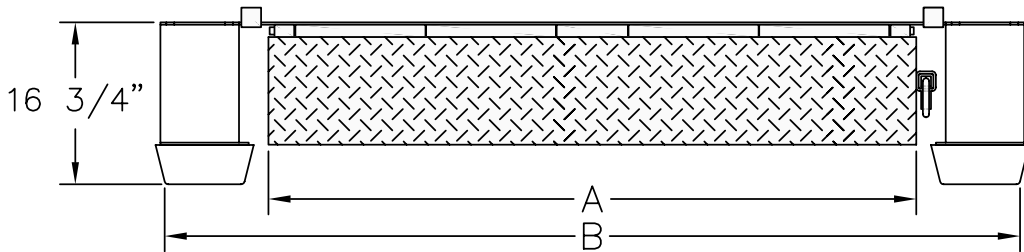
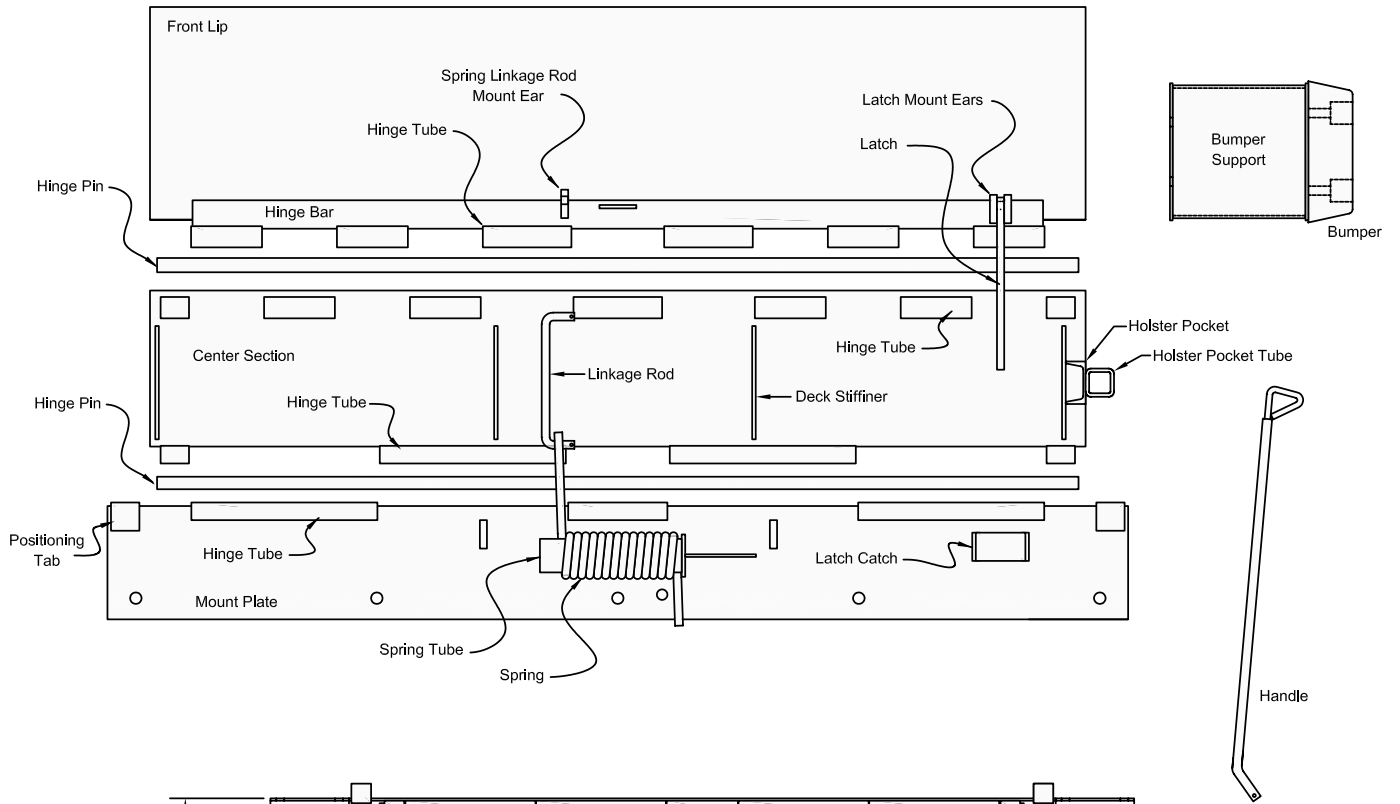
### FAST AND EASY OPERATION

Fast and easy to operate, Bluff's edge-of-dock leveler is positioned by lifting a self-storing handle and pulling the handle to the dock floor. The latch assembly activates the lip forward to the floor of the trailer as the handle is lifted. When released, the handle automatically returns to a stored position. The optimum dock height for conventional trailers is 51", while the proper dock height for refrigerated equipment is 55".

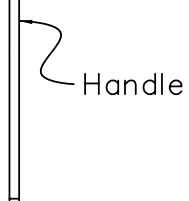
### SERVICE YOU CAN STAND ON

(800) 433-2212 • [www.bluffmanufacturing.com](http://www.bluffmanufacturing.com) • Fax 817-293-7570  
1400 Everman Parkway • Suite 156 • Fort Worth, TX 76140

# EZ-PULL EDGE OF DOCK LEVELERS MODEL EP



20EP66	WIDTH	B DIMENSION
—	66	88
—	72	94
—	78	100



*FOR INFORMATION ON OTHER MODELS, CONTACT BLUFF CUSTOMER SERVICE.*