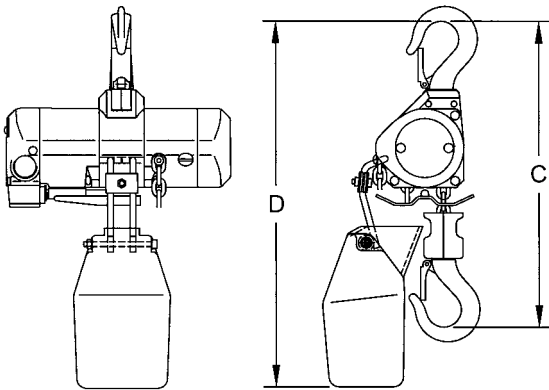


AH Mini-Cat Air Powered Hoists with Options

HOISTS WITH PLASTIC CHAIN CONTAINERS—DIMENSIONS

| Hoist Product Code | Max. Lift (ft) | Container Headroom D (in) | Hoist Headroom C (in) |
|--------------------|----------------|---------------------------|-----------------------|
| AH250C/P | 10 | 14.7 | 12.0 |
| AH500C/P | 20 | 16.1 | |

Chain containers are easily installed.



AH with Chain Container

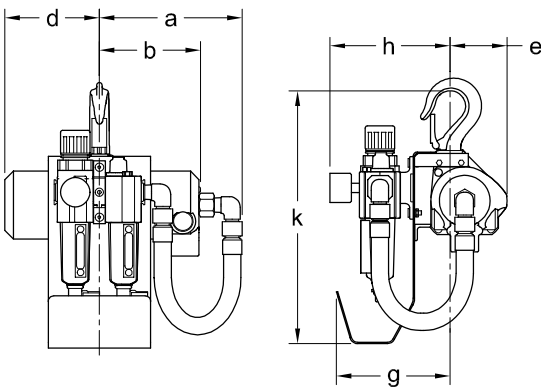
HOISTS WITH L, FL AND FRL—DIMENSIONS

| Cap. (lbs) | Product Code | a (in) | | b (in) | d (in) | e (in) | g (in) | h (in) | | k (in) |
|------------|--------------|--------|-------|--------|--------|--------|--------|--------|-----|--------|
| | | C | P & M | | | | | L & FL | FRL | |
| 250 | AH250C/P/M | 6.6 | 8.2 | 4.7 | 4.4 | 2.6 | 5.3 | 4.2 | 5.5 | 11.7 |
| 500 | AH500C/P/M | 6.6 | 8.2 | 4.7 | 4.4 | 2.6 | 5.3 | 4.2 | 5.5 | 11.7 |

L = Lubricator

FL = Filter and Lubricator

FRL = Filter, Regulator and Lubricator



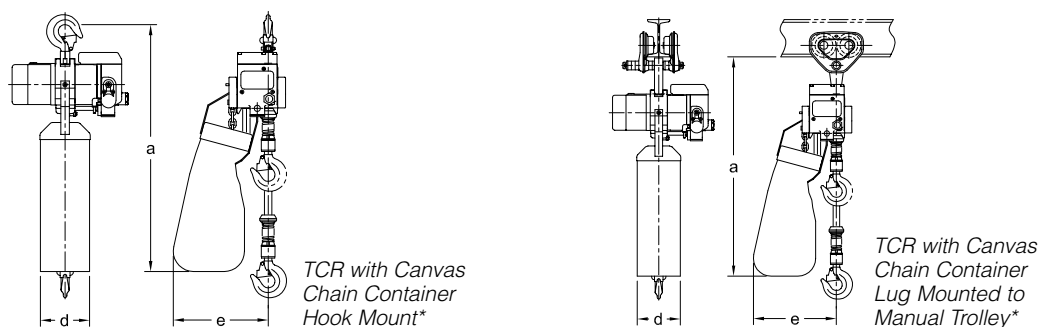
AH with L, FL and FRL

TCR Air Powered Hoists with Options

HOISTS WITH CANVAS CHAIN CONTAINERS—DIMENSIONS

| Product Code | a (in) | | | | d (in) | e (in) |
|--------------|--------|------|------|------|--------|--------|
| | TCR | TCRM | TCRP | TCRG | | |
| TCR250C/P | 28.7 | 29.8 | 29.1 | 28.8 | 5.7 | 11.0 |
| TCR500C/P | 28.7 | 29.8 | 29.1 | 28.8 | 5.7 | 11.0 |
| TCR1000C2/P2 | 28.7 | 29.8 | 29.5 | 29.5 | 5.7 | 12.0 |
| TCR1000C/P | 28.7 | 29.8 | 29.5 | 29.5 | 5.7 | 11.0 |
| TCR2000C2/P2 | 29.7 | 30.1 | 29.7 | 29.7 | 5.7 | 12.1 |
| TCR3000C/P | 34.6 | 34.2 | 34.0 | 34.0 | 8.3 | 12.8 |
| TCR6000C2/P2 | 35.6 | 34.4 | 38.1 | 38.1 | 8.3 | 14.5 |

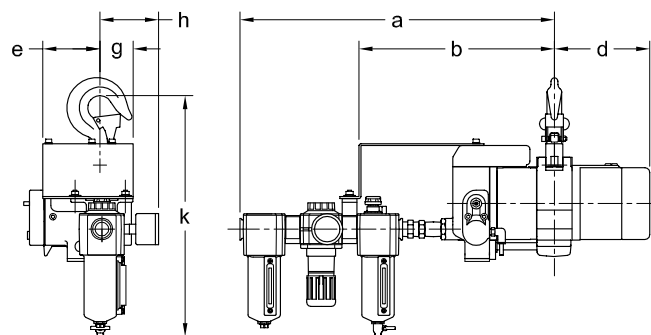
*Single fall hoist shown, double fall hoist may look different.



HOISTS WITH L, FL AND FRL—DIMENSIONS

| Cap. (Tons) | Product Code | a (in) | | | b (in) | d (in) | e (in) | g (in) | h (in) | k (in) |
|-------------|--------------|--------|------|------|--------|--------|--------|--------|--------|--------|
| | | L | FL | FRL | | | | | FRL | |
| 1/4 | TCR250C/P | 14.2 | 16.6 | 20.3 | 12.6 | 6.1 | 3.7 | 2.1 | 3.8 | 15.6 |
| 1/2 | TCR500C/P | 14.2 | 16.6 | 20.3 | 12.6 | 6.1 | 3.7 | 2.1 | 3.8 | 15.6 |
| 1 | TCR1000C2/P2 | 14.2 | 16.6 | 20.3 | 12.6 | 6.1 | 3.7 | 2.1 | 3.8 | 15.6 |
| 1 | TCR1000C/P | 14.2 | 16.6 | 20.3 | 12.6 | 6.1 | 3.7 | 2.1 | 3.8 | 15.6 |
| 2 | TCR2000C2/P2 | 14.2 | 16.6 | 20.3 | 12.6 | 6.1 | 3.7 | 2.1 | 3.8 | 16.6 |
| 3 | TCR3000C/P | 16.6 | 19.0 | 22.7 | 15.0 | 8.0 | 3.7 | 2.1 | 3.8 | 18.4 |
| 6 | TCR6000C2/P2 | 16.6 | 19.0 | 22.7 | 15.0 | 8.0 | 3.7 | 2.1 | 3.8 | 19.4 |

L = Lubricator
 FL = Filter and Lubricator
 FRL = Filter, Regulator and Lubricator

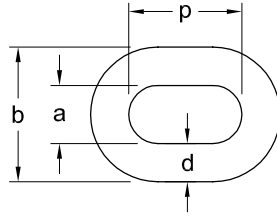


TCR with L, FL and FRL

Technical Data

AH CHAIN—DIMENSIONS

| Product Code | a (in) | b (in) | d (in) | p (in) |
|--------------|--------|--------|--------|--------|
| AH250C/P/M | 0.20 | 0.53 | 0.16 | 0.48 |
| AH500C/P/M | | | | |



TCR CHAIN—DIMENSIONS

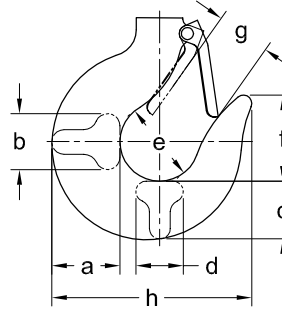
| Product Code | a (in) | b (in) | d (in) | p (in) |
|---------------|--------|--------|--------|--------|
| TCR250C/P | 0.31 | 0.87 | 0.25 | 0.75 |
| TCR500C/P | | | | |
| TCR1000C2/P2 | | | | |
| TCR1000C/P | 0.35 | 0.98 | 0.28 | 0.83 |
| TCR2000C2/P2 | | | | |
| TCR3000C/P | 0.55 | 1.54 | 0.44 | 1.34 |
| TCR6000C2/P2 | | | | |
| TCR10000C2/P2 | 0.88 | 2.14 | 0.63 | 1.77 |
| TCR25000C2/P2 | 1.22 | 2.95 | 0.87 | 2.60 |

TCS CHAIN—DIMENSIONS

| Product Code | a (in) | b (in) | d (in) | p (in) |
|--------------|--------|--------|--------|--------|
| TCS250C/P | 0.31 | 0.87 | 0.25 | 0.75 |
| TCS500C/P | | | | |
| TCS1000C2/P2 | | | | |

AH TOP AND BOTTOM HOOK—DIMENSIONS

| Product Code | a (in) | b (in) | c (in) | d (in) | e (in) | f (in) | g (in) | h (in) |
|--------------|--------|--------|--------|--------|--------|--------|--------|--------|
| AH250C/P/M | 0.7 | 0.8 | 0.6 | 0.8 | 1.4 | 1.3 | 0.9 | 2.9 |
| AH500C/P/M | 0.7 | 0.8 | 0.6 | 0.8 | 1.4 | 1.3 | 0.9 | 2.9 |



TCS TOP AND BOTTOM HOOK—DIMENSIONS

| Product Code | a (in) | b (in) | c (in) | d (in) | e (in) | f (in) | g (in) | h (in) |
|--------------|--------|--------|--------|--------|--------|--------|--------|--------|
| TCS250C/P | 0.6 | 0.8 | 0.6 | 0.8 | 1.4 | 1.3 | 1.0 | 2.9 |
| TCS500C/P | 0.6 | 0.8 | 0.6 | 0.8 | 1.4 | 1.3 | 1.0 | 2.9 |
| TCS1000C2/P2 | 1.4 | 0.9 | 1.1 | 0.9 | 1.6 | 1.6 | 1.1 | 4.2 |

TCR TOP AND BOTTOM HOOK—DIMENSIONS

| Product Code | a (in) | b (in) | c (in) | d (in) | e (in) | f (in) | g (in) | h (in) |
|---------------|--------|--------|--------|--------|--------|--------|--------|--------|
| TCR250C/P | 1.4 | 0.9 | 1.1 | 0.9 | 1.6 | 1.6 | 1.1 | 4.2 |
| TCR500C/P | 1.4 | 0.9 | 1.1 | 0.9 | 1.6 | 1.6 | 1.1 | 4.2 |
| TCR1000C2/P2 | 1.4 | 0.9 | 1.1 | 0.9 | 1.6 | 1.6 | 1.1 | 4.2 |
| TCR1000C/P | 1.4 | 0.9 | 1.1 | 0.9 | 1.6 | 1.6 | 1.1 | 4.2 |
| TCR2000C2/P2 | 1.8 | 1.2 | 1.5 | 1.2 | 1.8 | 2.0 | 1.1 | 4.9 |
| TCR3000C/P | 2.0 | 1.5 | 1.7 | 1.3 | 2.0 | 2.4 | 1.3 | 5.9 |
| TCR6000C2/P2 | 2.3 | 1.6 | 1.9 | 1.6 | 2.6 | 2.8 | 1.7 | 6.8 |
| TCR10000C2/P2 | 2.8 | 2.4 | 2.4 | 2.2 | 2.4 | 2.6 | 1.6 | 7.1 |
| TCR25000C2/P2 | 4.9 | 3.5 | 3.9 | 3.5 | 4.9 | 4.9 | 3.1 | 13.1 |

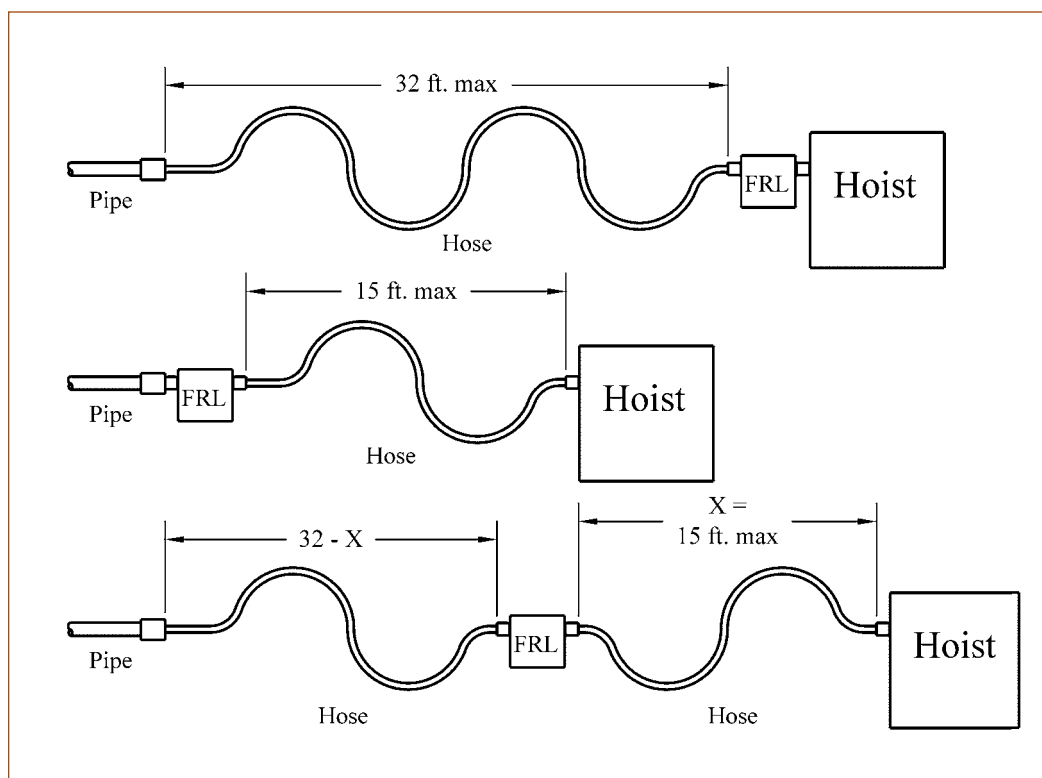
Technical Data

TYPICAL ARRANGEMENTS OF FRL AND AIR SUPPLY HOSE LENGTHS

The connection from the air supply system piping to the hoist must be made with a flexible pressure hose. Due to normal losses in air supply lines:

- Do not use hose smaller than specified.
- Limit the length of the hose to that specified below.

If your application exceeds these requirements, consult Customer Service.



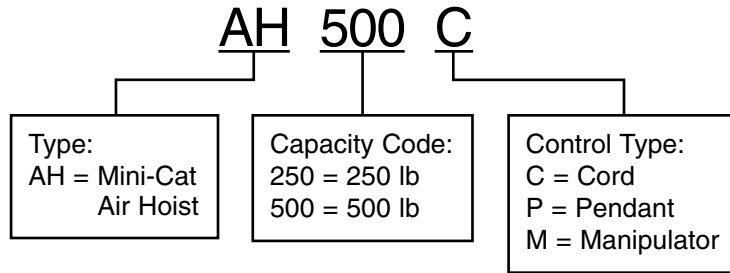
FRL = Filter, Regulator and Lubricator

BULLARD® AND SHUR-LOC® HOOKS

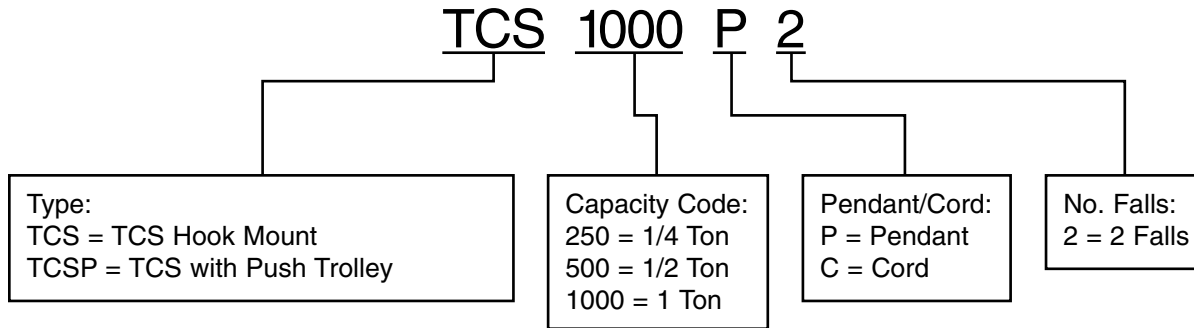
These hooks offer a positive locking latch feature. Consult Customer Service for full details.

Product Code

AH MINI-CAT SERIES



TCS CHEETAH SERIES



TCR SERIES

