

PROSORT 131

High Speed
Sortation Conveyor
(Small Item)



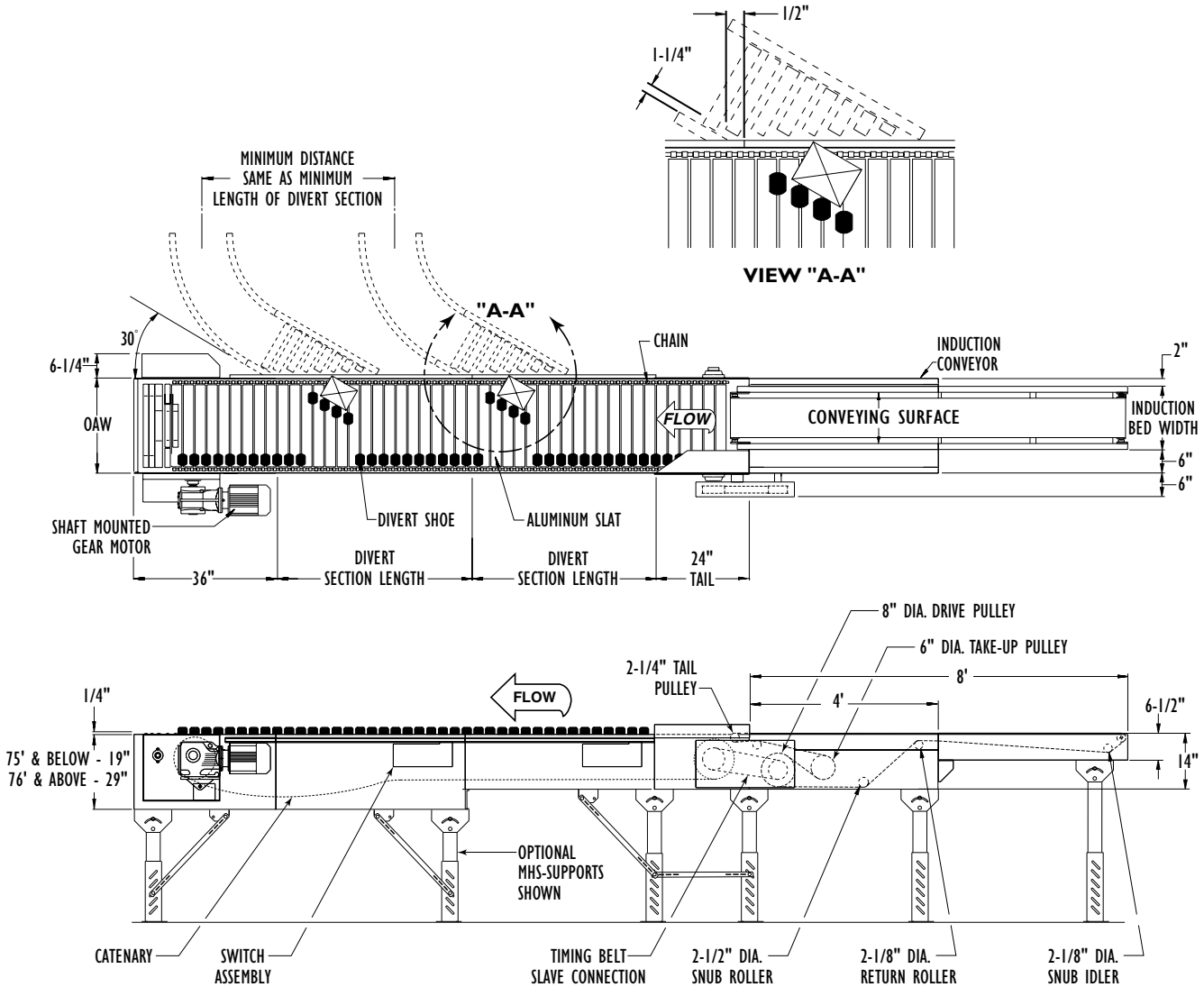
Conveyor shown with optional floor supports



The ProSort 131 is designed for high speed sorting of products which may be too small to be sorted on conventional shoe sorters. Small fragile items or groups of items can be sorted with ease using the ProSort 131. Products are transported on high strength, anodized aluminum slats. At a predetermined location, divert shoes move diagonally across the conveyor to push the product onto a take-away line.

- 4 Widths Available
- Right or Left Hand Diverts Available (Specify)
- High Sort Rates
- Sorts Small Fragile Items
- Anodized Aluminum Slats
- Adjustable MHS-Type Floor Supports Available

HYTROL CONVEYOR COMPANY, INC.



• STANDARD SPECIFICATIONS

INTERMEDIATE & TAIL BED—14 in. deep x 1 1/2 in. bottom flange inside, 12 ga. formed steel frame—powder painted.

DRIVE/CATENARY BED—19 in. deep formed steel frame—powder painted and 29 in. deep for over 75 ft. long.

CARRYING CHAIN—Dual strands of No. 60 roller chain with extended pins.

CATENARY TAKE-UP—Underside catenary take-up provided at drive end.

CHAIN LUBRICATOR—Installed at infeed end to lubricate carrying chains. Gravity feed with 24 volt DC on/off switch. Flow control valves to control the amount of oil allowed to flow to each of the brush applicators.

SLATS—Anodized aluminum slats supported at each end by bushings and extended chain pins.

DIVERT SHOES—Low friction molded base with high friction pusher face. Steel guide pin for switching and ball bearing cam follower for diverting. Located on 3 in. centers.

SWITCH ASSEMBLY—Pneumatic operated switch assembly mounted with rubber isolators for quietness and easily removable for maintenance.

AIR REQUIREMENTS—Free air consumption at 60 P.S.I. equals .002 cu. ft. per divert.

AIR VALVE—24 volt DC single solenoid 4-way air valve at each divert station.

AIR FILTER, REGULATOR—Supplied for main air supply line.—3/8 in. NPT ports. Required working pressure of 60 P.S.I.

AIR PRESSURE SWITCH—Install in main air line near the last divert switch. Used to detect low air pressure and turn off drive.

SMART PROXIMITY SWITCHES—24 Volt DC inductive proximity switch. One at each divert. Requires maintained electrical signal for duration of each divert.

SAFETY SWITCHES—Switches located at infeed and discharge ends to detect stray divert shoes or internal jams. Additional switch supplied at 50 ft. intervals. Interrupts power to drive motor when these conditions are detected.

DRIVE—Shaft mounted gear motor. Mounted at discharge end on the opposite side from the diverts. 230/460V- 3Ph. 60HZ. Horsepower based on speed and length requirements.

VARIABLE SPEED CONTROLLER—Provides smooth acceleration of drive motor and speed variations if necessary.

CONVEYING SPEED—Determined by application requirements. Up to 350 FPM.

PACKAGE SIZE—Minimum 4 1/2 in. long.

CAPACITY—Maximum load-25 lbs. per ft. Maximum unit load-50 lbs.

GUARD RAIL—3 3/4 in. high guard rail on shoe side only.

INDUCTION CONVEYOR—Belt conveyor slave driven from sorter at same speed as sorter.

• STANDARD SPECIFICATIONS - INDUCTION CONVEYOR

BELT—Black, high-grip, longitudinal groove with high speed lacing, belt width is 6 in. less than bed width.

BED—12 ga. galvanized slider pan mounted in 6 1/2 in. x 12 ga. painted formed steel channel frame.

DRIVE—Slave driven at same speed as sorter via timing belt and bolted directly to infeed of sorter. Access holes designed into side plate for ease of pulley removal.

DRIVE PULLEY—8 in. dia. with 1 1/4 in. dia. shaft at bearings-machine crowned.

TAKE-UP PULLEY—6 in. dia. with 1 7/8 in. dia. shaft at bearings-machine crowned.

TAIL PULLEY—2 1/4 in. dia.-Machine crowned and easily removable.

TAKE-UP—Take-ups in drive provide 16 in. of belt take-up.

BEARINGS—Sealed, pre-lubricated, self-aligning, ball bearings on drive.

Sorter Conveying Surface Width	Sorter Overall Width "OAW"	Induction Bed Width "OAW"	Spur Width "OAW"	CONVEYOR SECTION							
				Drive (not including gearmotor)		Tail (not including induction belt)		Divert section with 30 degree diverter ProSort 131		Intermediate with no Diverter	
				Length	Wt (LBS)	Length	Wt (LBS)	Length	Wt (LBS)	Length	Wt (LBS/FT)
15"	26"	18"	18"	36"	310	24"	210	51"	250	12" to 120" on 3" increments	50
21"	32"	24"	24"		345		235	60"	330		55
27"	38"	30"	30"		380		260	72"	410		60
33"	44"	36"	36"		415		285	81"	480		65

All weights in catalog are conveyor weights only. Accessories, crating, etc., are not included.

Gearmotor Wt.	
HP	LBS
3	100
5	179
7.5	225
10	284
15	304

• OPTIONAL EQUIPMENT

FLOOR SUPPORTS—MHS Type floor supports are available with a wide range of adjustment. Specify top of belt or roller elevation. One support required at every bed joint and ends of conveyor. Holes in feet for lagging to floor. Knee braces recommended above MHS-6 support.

TAKE AWAY LINES—Gravity spurs are available. Consult factory for recommendation of type and configuration.

GUARD RAILS—Adjustable channel and fixed channel types available.

PROSORT LOGIX CONTROL PACKAGE—Provides complete controls for proper sorter operation. Contact factory for details.