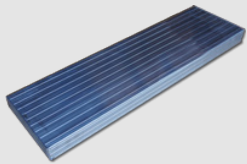


# Rolastair™ Aluminum

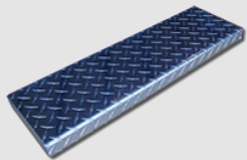
## Use when moisture is a problem - Natural Aluminum Finish

- All welded 1" dia. high-strength alloy aluminum pipe construction
- Strong, safe 7" wide extrusion forms the steps and top platform
- 2" dia. non-skid/non-marking shoes
- Extra deep platforms available (in multiples of 7")
- Mill finish material
- 300 lb. Capacity
- Custom Designs Available



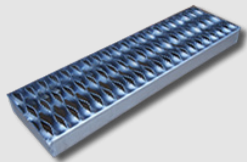
### Extruded Plank (standard)

Designed for strength and consistency. Provides the strength of formed aluminum sheet at a lower cost. Top surface is ribbed for traction.



### Diamond Plate (optional)

Provides anti-slip protection through use of raised diamond shaped ribs on a fully closed step surface.



### Safety Grating (optional)

Provides maximum non-skid protection in wet and/or dry conditions.



MOBILE LADDER STANDS

### Ladder Industries



# Rolastair™ Aluminum

Select the best unit for your application  
based on the required platform height.  
Custom Sizes are Available.

DESCRIPTION	STEPS	MODEL	PLATFORM HEIGHT	TOP WIDTH	OVERALL HEIGHT	BASE DIMENSIONS	EST. WEIGHT
No Handrails.  Equipped with four 2" Dia. Spring loaded casters.	1	AL20-1 AL26-1	12" 12"	20" 26"	12" 12"	20"W x 18"D 26"W x 18"D	8 lbs. 9 lbs.
	2	AL20-2 AL26-2	19" 19"	20" 26"	19" 19"	20"W x 23"D 26"W x 23"D	13 lbs. 14 lbs.
	3	AL20-3 AL26-3	28-1/2" 28-1/2"	20" 26"	28-1/2" 28-1/2"	22"W x 31"D 28"W x 31"D	19 lbs. 21 lbs.
2 Step Units- 22" Tall Handrails  3-5 Step Units - 32" Tall Handrails & Guardrails  Equipped with Four 2" Dia. Spring Loaded Casters.	2	AL20H2 AL26H2	19" 19"	20" 26"	41" 41"	21"W x 23"D 27"W x 23"D	15 lbs. 16 lbs.
	3	AL20H3 AL26H3	28-1/2" 28-1/2"	20" 26"	60-1/2" 60-1/2"	22"W x 31"D 28"W x 31"D	21 lbs. 23 lbs.
	4	AL20H4 AL26H4	38" 38"	20" 26"	70" 70"	24"W x 37"D 30"W x 37"D	25 lbs. 28 lbs.
	5	AL20H5 AL26H5	47-1/2" 47-1/2"	20" 26"	79-1/2" 79-1/2"	25-1/2"W x 43-1/2"D 31-1/2"W x 43-1/2"D	32 lbs. 36 lbs.
6-9 Step Units - 42" Tall Guardrail  Equipped with Two 2" Dia. Spring Loaded Casters and Two 3-1/2" Rigid Casters Under the Platform.	6	AL20H6 AL26H6	57" 57"	20" 26"	99" 99"	27"W x 51"D 33"W x 51"D	41 lbs. 45 lbs.
	7	AL20H7 AL26H7	66-1/2" 66-1/2"	20" 26"	108-1/2" 108-1/2"	28-1/2"W x 57"D 35"W x 57"D	50 lbs. 54 lbs.
	8	AL26H8	76"	26"	118"	36"W x 64"D	60 lbs.
	9	AL26H9	85-1/2"	26"	127-1/2"	36"W x 71"D	68 lbs.
10 Step and Larger Units -  42" Tall Guardrails  Two 2" dia. spring loaded casters and two 5" Rigid Casters Under the Platform.	10	AL26H10	95"	26"	137"	36"W x 78"D	77 lbs.
	11	AL26H11	104-1/2"	26"	146-1/2"	39"W x 86"D	84 lbs.
	12	AL26H12	114"	26"	156"	42"W x 93"D	92 lbs.

MOBILE LADDER STANDS