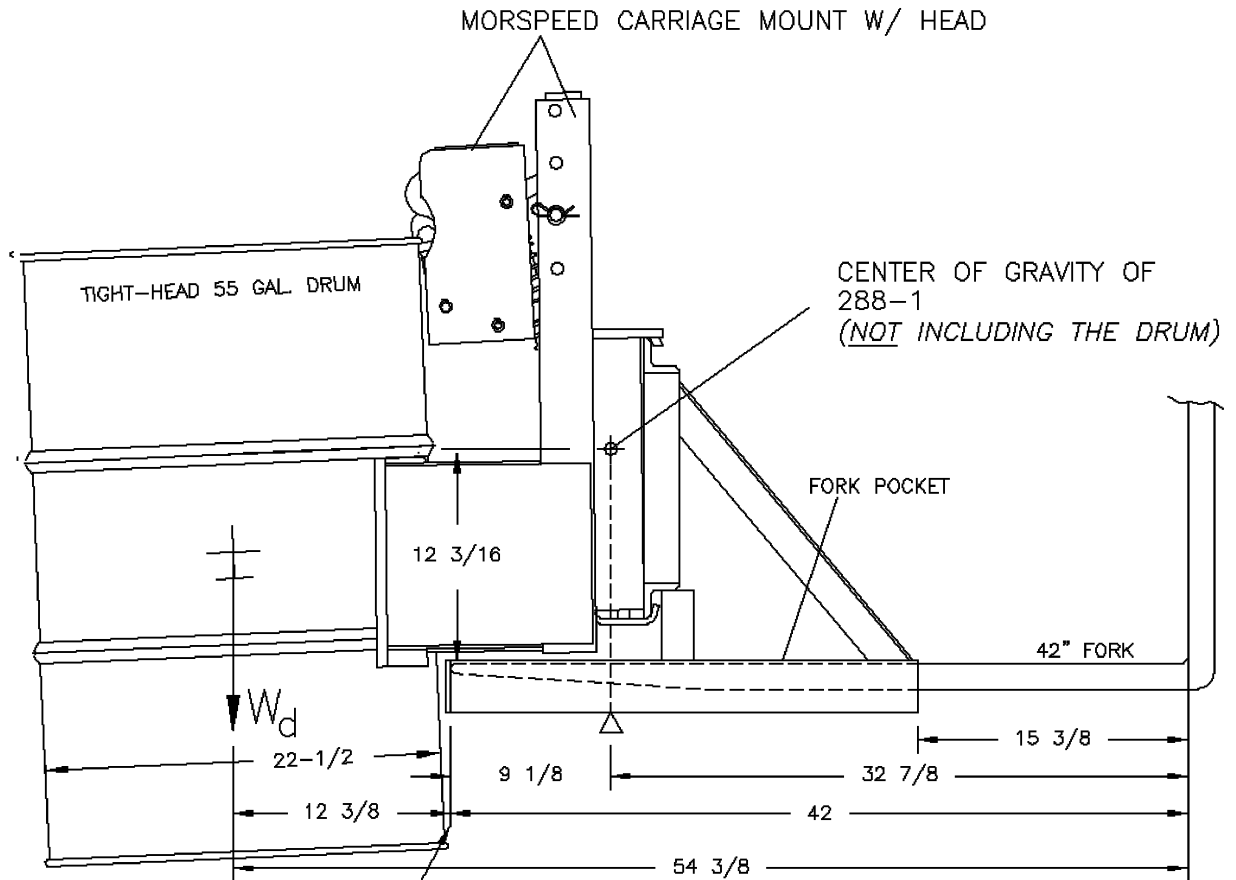


**LOST LOAD CAPACITY WITH
MORSE MODEL 288-1 MORSpeed Fork Truck Attachment
Serial Numbers 0301 to _____**

**CENTER OF GRAVITY DIMENSIONS FOR
CALCULATING LOST LOAD ON LIFTING EQUIPMENT**



DIMENSIONS ARE MEASURED FROM INSIDE OF FORK TUBE END. THIS WILL GIVE A FIXED POINT TO WHICH LOST LOAD DATA CAN BE DETERMINED. (FORKS MUST BE TOUCHING THIS FORK TUBE END.)

MODEL	NET WEIGHT	OPTION	ADD TO MODEL
288-1	246 LB.	2523-P	5 LB.

W_d = WEIGHT OF DRUM
MAX = 1500 LB.