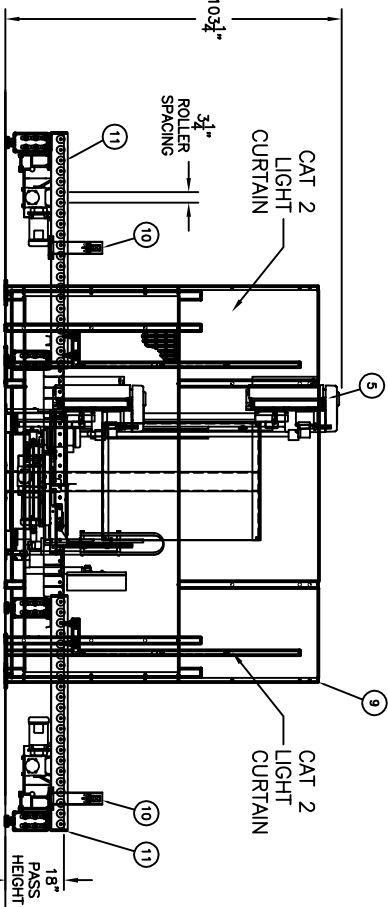
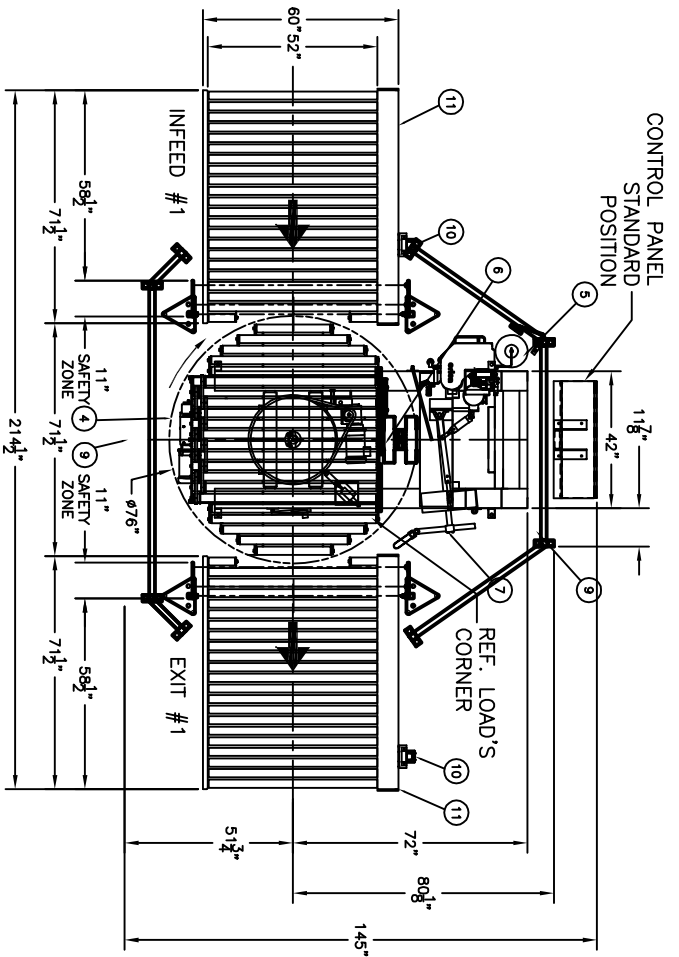
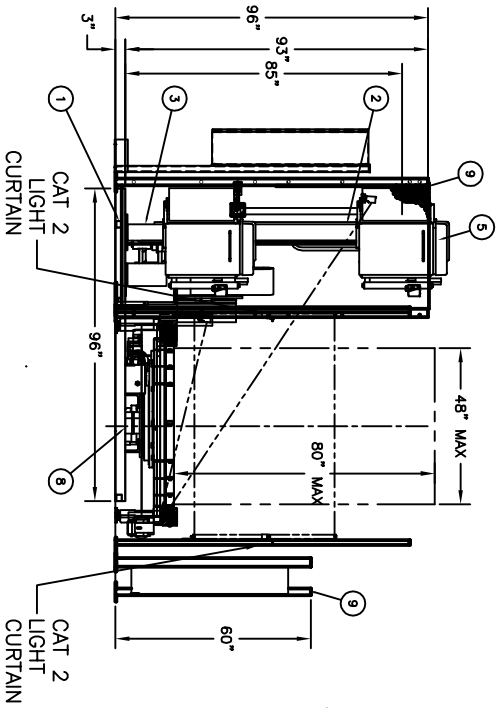
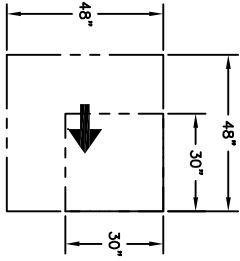


- STANDARD MACHINE SPECS :**
1. CONVEYOR ROLLERS : 2.50" DIA ROLLERS @ 3.25" CENTERS, 52" EFFECTIVE WIDTH
 2. CONVEYOR PASS HEIGHT : 18"
 3. CONVEYOR SPEED : 30 FPM
 4. ROTARY TURNTABLE SPEED : 15 RPM
 5. MAX. LOAD SIZE : 48" W x 48" L x 80" H
 6. MIN. LOAD SIZE : 30" W x 30" L x 15" H
 7. LOAD WEIGHT : MIN. 200 LBS, MAX 4500 LBS.
 8. POWER REQUIREMENT : 480/3/60 30 AMP
 9. AIR SUPPLY : 6 CFM AT 80 PSI
 10. MACHINE COLOR : STANDARD ORION GRAY



PLEASE NOTE: STANDARD DESIGNS ARE SHOWN AND ARE SUBJECT TO CHANGE BY THE MANUFACTURER.

11	1	FA BASE VALVEMENT ASSY CLO
10	1	FA 40 BOLT IN TOWER DRIVE CLO
9	1	FA 76" TURNABLE ASSY SHRS 30 RPM
8	1	FA 40 BOLT IN TOWER DRIVE CLO
7	1	FA 76" TURNABLE ASSY SHRS 30 RPM
6	1	FA 40 BOLT IN TOWER DRIVE CLO
5	1	FA 76" TURNABLE ASSY SHRS 30 RPM
4	1	FA 40 BOLT IN TOWER DRIVE CLO
3	1	FA 76" TURNABLE ASSY SHRS 30 RPM
2	1	FA 40 BOLT IN TOWER DRIVE CLO
1	1	FA 76" TURNABLE ASSY SHRS 30 RPM

4750 County Road 13 NE
Alexandria, MN 56308-9014
Phone (320) 852-7705
Fax (320) 852-7621
www.brentonengineering.com

Tolerances Unless Noted
Decimals ± .01 Fractions 1/2"
Fit ± .001 1" Angles ± 1°

Ship to: Machine ID: DRAWN BY: DJL SCALE: NONE DATE: 11/10/10 Drawing No: FA-ST

THIS DRAWING IS THE PROPERTY OF BRENTON ENGINEERING COMPANY AND IS NOT TO BE USED OR REPRODUCED WITHOUT THEIR PERMISSION. DRAWING DOES NOT DEPICT GUARDING UNLESS NOTED.

REVISION
COMPANY NAME
FA-ST STRETCH WRAPPER 18 PH LEFT TO RIGHT