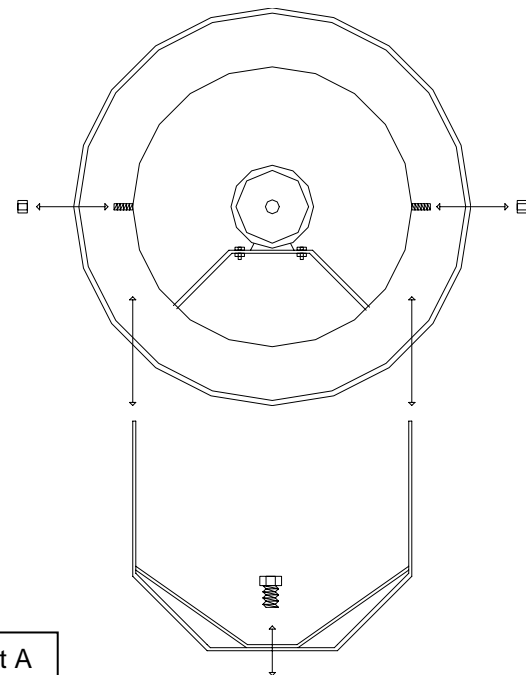
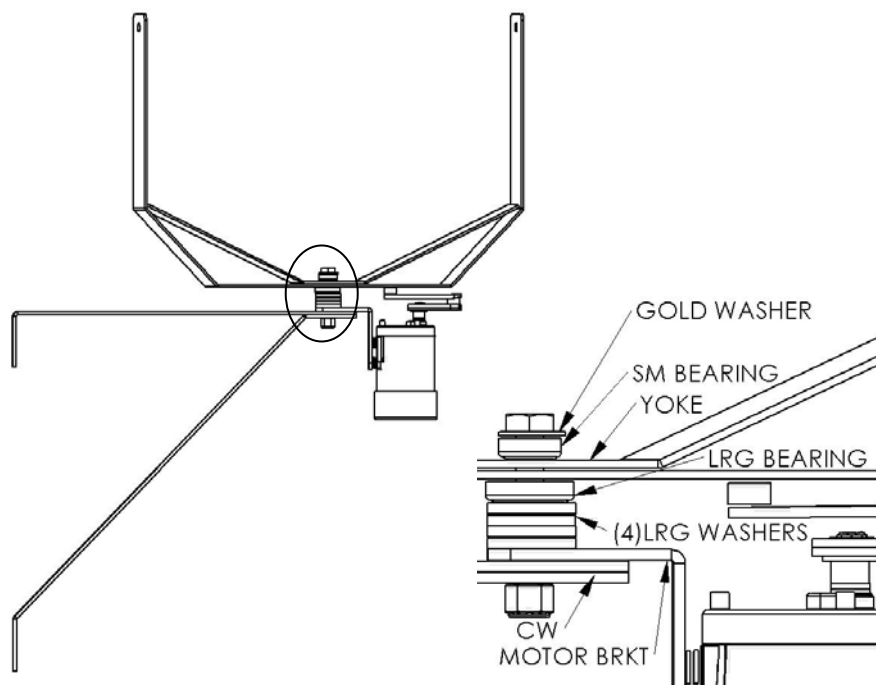


Patterson

Column/Wall w/ Oscillator
Mounted Fan

Assembly & Operation Instructions



Part A

Part B

Assembly and Operation Instructions for Patterson Model Items Included

- Box 1 of 3: Factory Assembled Fan Head with (2) Nuts, "U" Shaped Yoke with bolt and nut.
Box 2 of 3: Wall Bracket (Suitable for Column or Wall Mounting)
Box 3 of 3: Oscillator Assembly with Long Bolt, Nut & Oscillator Linkages with (2) Thrust Bearings, spacer & (1) 3 1/2" Long Bolt, Nut & Washer

Items Needed

- (1) 15/16" Box End Wrench
(1) Ratchet with 15/16" Deep Socket & Extension
(1) 1/2" Box End Wrench
(3) 1/2" Wall Anchors & Bolts (Clamps, Welding, etc. May also be used)
Items to Attach Wall Bracket to Wall, Column, Equipment, etc. (i.e.: Drill, Bit, Mallet, and Adjustable Wrench)

Assembly Instructions

Note: There are many acceptable methods for installing a Patterson Column/Wall Mounted w/ Oscillator Fan. The most important things to remember are that the wall mount should be solid feeling and that if the fan is at a level near people's hands, etc. it should be equipped with OSHA Approved Finger Guards. OSHA Approved Finger guards are available through Patterson Fan Co., Inc. Please contact your factory sales representative to order.

1. Secure the *Wall Bracket* to the solid surface from which you plan to hang the fan. The *Wall Bracket* must be mounted wide side up. Attach Part A to the wall first. Position Part B so that it forces Part A to be level. Attach Part B.

2. Attach the *Oscillator Assembly* and “U” Shaped Yoke to the *Wall Bracket*. To do so, thread the large bolt thru the washer, upper bearing, yoke, lower bearing, motor bracket and finally the wall bracket. (See illustration) Tighten nut to 60 ft/lbs.
3. Attach the *Oscillator Linkages* to the “U” Shaped Yoke. The accepting hole is on the bottom edge, off center.
4. The *Factory Assembled Fan Head* fits inside of the “U” Shaped Yoke, the threaded studs on each side of the fan fit through the predrilled holes on the “U” Shaped Yoke. Secure the *Factory Assembled Fan Head* to the “U” Shaped Yoke” with the supplied *Nuts*. Mount the *Factory Assembled Fan Head* so that the motor mount is below the motor.

Single Phase Motors

The *Factory Assembled Fan Head* is equipped with a 12-foot long cord and connector. To turn on the fan, plug it in; to turn off the fan, unplug it.

Three Phase Motors

A cord and connector is not supplied with Three Phase Motors. Fans with these motors will need to be fitted with an appropriate cord and connector or hard wired directly to a power source. If the fan is supplied with finger guards, the rear finger guard will need to be partially removed to access the motors internal wiring. Remove all but one of the self-tapping screws and place them in a safe place, you will use them again. Rotate the guards around on the single self-tapping screw. Wire the fan, replace the guard using the saved self-tapping screws.

When looking at the front of the fan, the blade should be turning clockwise. If it does not, the electrical connection wires may need to be reversed. If reversing the wires does not fix the problem, please contact you factory sales representative.

Operation Instructions

All Patterson Fans were designed to be virtually maintenance free, but routine cleaning and inspection are recommended. On an as needed basis, clean the fan of all dust, dirt, and grease. Regular cleaning will keep the fan operating at optimal performance levels.

On an annual basis, we recommend that you inspect for the following things:

- Tightness of the Blade
- Cracking of the Blade and Hub
- Integrity of Motor Mount Welds
- Tightness of the Safety Guards
- Tightness of 5/8” Bolts and Washers
- Security of Attachment to Wall
- Tightness of the Bearings & Oscillator Linkages

*Grease fittings are supplied on the Pillow Block Bearings. Fill with grease as needed, any grease will do.

If you find any problems as a result of routine inspection or have any questions about the Assembly or Operation Instructions, please call your factory sales representative at 800-768-3985.

<p>Patterson Fan Co., Inc. 1120 Northpoint Blvd. Blythewood, SC 29016 Tel: 800-768-3985 Fax: 803-691-4751 www.pattersonfan.com</p>
--

Note: Due to continual product improvement, items are subject to change without notice.