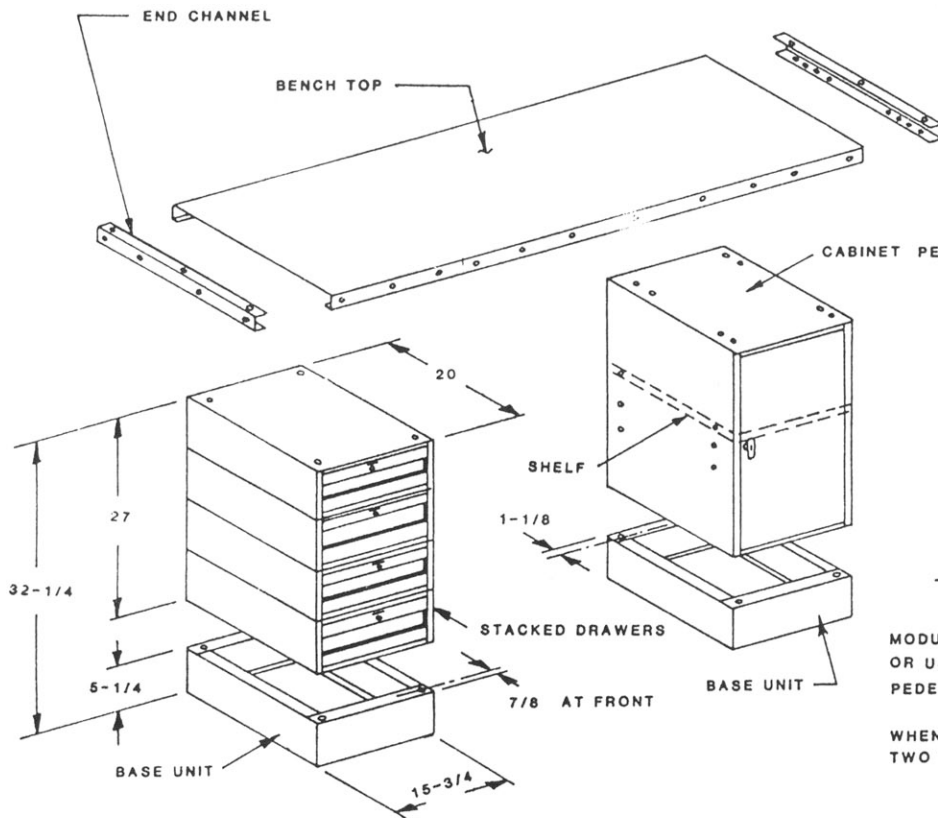
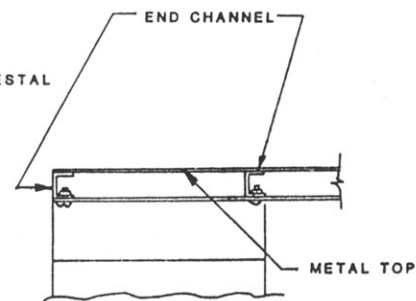


HANDLE ASSEMBLY INSTRUCTIONS

ASSEMBLE AS DIRECTED BELOW:



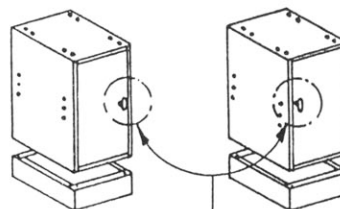
1. DRAWER STACKED (4) HIGH USING (4) 1/4-20 X 1/2 SLOTTED HEAD BOLTS PER DRAWER.
2. BASE SECURED TO STACKED DRAWERS WITH (4) 1/4-20 X 1/2 BOLTS.
3. CABINET FASTENED TO BASE WITH (4) 1/4-20 X 1/2 BOLTS. NOTE L.H. OR R.H. DOOR OPTION
4. INSTALL SHELF IN CABINET WITH (4) 1/4-20 X 1/2 BOLTS.
5. DRAWERS & CABINET ARE FASTENED TO END CHANNELS WITH (4) 1/4-20 X 1/2 BOLTS.
6. ASSEMBLE HANDLE TO CABINET AS SHOWN.



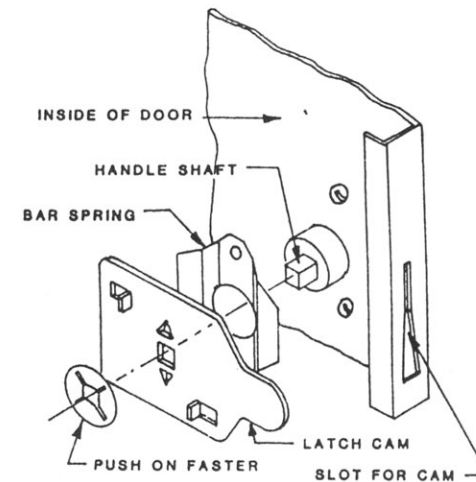
FRONT VIEW
STEEL TOP PEDESTAL FLUSH MOUNTED

MODULAR TYPE BENCHES CAN BE ASSEMBLED AS SHOWN OR USING TWO DRAWER PEDESTALS, TWO CABINET PEDESTALS OR COMBINATIONS OF BOTH.

WHEN PEDESTAL IS USED AS COMMON PEDESTAL BETWEEN TWO TOPS - BUTT TOPS ON CENTER OF PEDESTAL.



LEFT OR RIGHT HAND DOOR OPENING INVERT CABINET ON BASE.



THE HANDLE AND LATCHING MECHANISM FOR DOORS IS SHIPPED SEPARATELY FROM THE DOORS BECAUSE OF THE PROBABLE DAMAGE IN SHIPMENT.

1. BOLT HANDLE & BAR SPRING IN PLACE.
2. SLIP LATCH CAM IN PLACE OVER HANDLE SHAFT BEING SURE THE END OF CAM IS THRU SLOT AT EDGE OF DOOR.
3. PRESS IN FIRMLY ON LATCH CAM, PRESS ON PUSH ON FASTENER OVER SQUARE END.

ASSEMBLY INSTRUCTIONS FOR MODULAR TYPE BENCH



SUBSIDIARY OF VESPER CORPORATION
PENCO PRODUCTS INC., OAKS, PA.

HARDWARE KIT NO.
31237

PART NO. 08355
REV 4/86