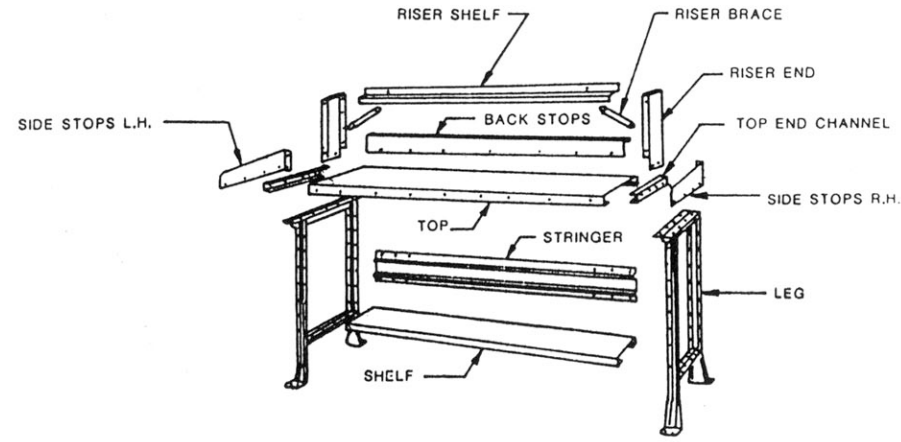


**COMMON LEG 2 TOPS**

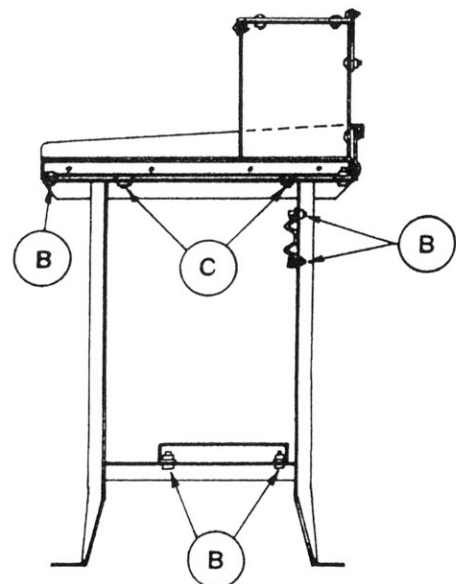
**WOOD TOP**

**LEG ON END**

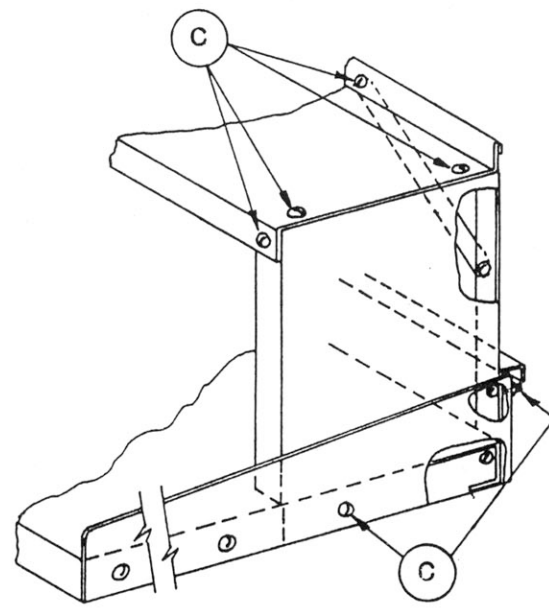


**EXPLODED VIEW**

- NOTES:**
1. DO NOT TIGHTEN BOLTS UNTIL ASSEMBLY IS COMPLETE.
  2. TOP END CHANNELS NOT USED WITH WOOD TOP.
  3. WOODS SCREWS NOT FURNISHED FOR RISER OR BACK AND END STOPS WHEN WOOD TOP IS USED.
  4. USE LOCK WASHERS UNDER ALL 1/4" NUTS



**END SECTION**



**RISER DETAIL**

1. FASTEN LEGS TO TOP USING TOP END CHANNELS (8) TYPE (B) BOLTS AND (4) TYPE (C) BOLTS. WOOD TOP USE (8) TYPE (A) SCREWS.
2. ATTACH STRINGER BETWEEN REAR OF LEGS USING (4) TYPE (B) BOLTS. BOLTS PLACED DIAGONALLY OPPOSITE SO THAT BOLTS DO NOT APPEAR DIRECTLY ABOVE EACH OTHER. IF DRAWERS ARE USED LOCATE STRINGER BELOW DRAWERS.

**OPTIONAL EQUIPMENT**

1. BENCH SHELF BOLT TO LEGS WITH (2) TYPE (B) BOLTS EACH END. NOTE STRINGER MAY BE LOWERED TO FORM A PACKAGE STOP FOR THE BOTTOM SHELF.
2. RISER ENDS FASTEN TO BENCH TOP WITH (2) TYPE (B) BOLTS.
3. SIDE AND BACK STOPS: SECURE TO BENCH WITH TYPE (C) BOLTS.
4. RISER SHELF BOLTED TO RISER ENDS WITH (8) TYPE (C) BOLTS.
5. RISER BRACE: SECURE RISER WITH (4) TYPE (C) BOLTS. NOTE: INSTALL RISER ENDS FIRST WHEN RISER IS USED WITH SIDE AND BACK STOPS.

**HARDWARE**



**ASSEMBLY INSTRUCTIONS OPEN TYPE WORK BENCH**

PART NO. 08351



PENCO PRODUCTS INC - OAKS, PA. 19458

REV 4/86