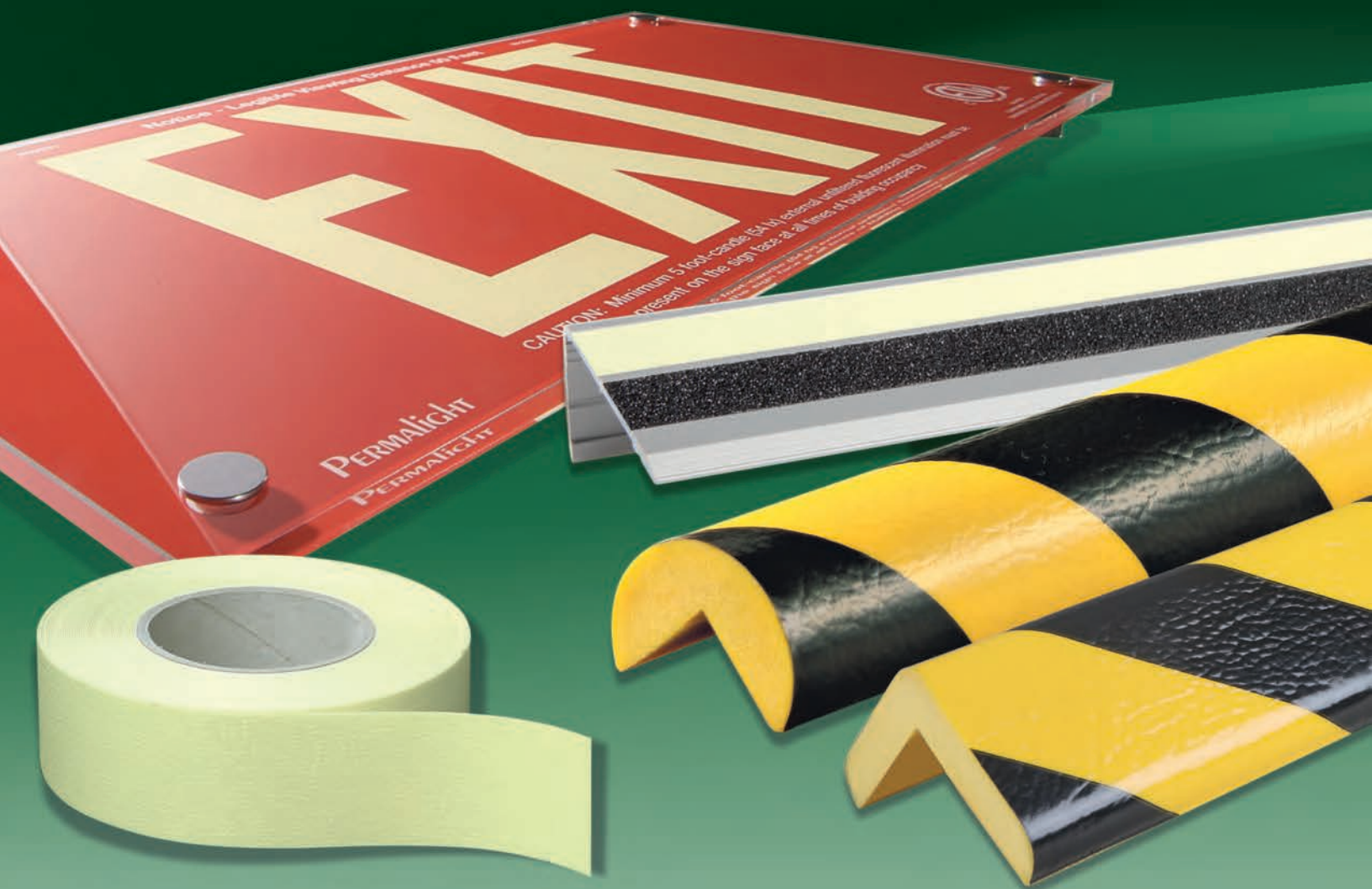


MAIN CATALOG

Photoluminescent Safety Products and Bumper Guards





Dear Customer:

March 2016 marked American PERMALIGHT®, Inc.'s 28th Anniversary as a California Incorporation. The Codes and Standards-acceptance of our photoluminescent safety products has come a long way since 1988. In 1994, following the first terrorist bomb attack in the World Trade Center basement parking garage, the Port Authority of New York and New Jersey installed PERMALIGHT® photoluminescent markings on the steps, landings and handrail top bars of their emergency staircases.

During the 9/11 World Trade Center New York City evacuation, 33% of survivors in WTC Tower I and 17% of survivors in WTC Tower II were aided by the PERMALIGHT® photoluminescent markings on the steps, landings and handrails. (see NIST study at <http://wtc.nist.gov/NCSTAR1/PDF/NCSTAR%201-7.pdf>). Based on the NIST findings, the New York City Department of Buildings developed a range of improvements, enforced by Local Law 26 of 2004, which included photoluminescent exit path markings.

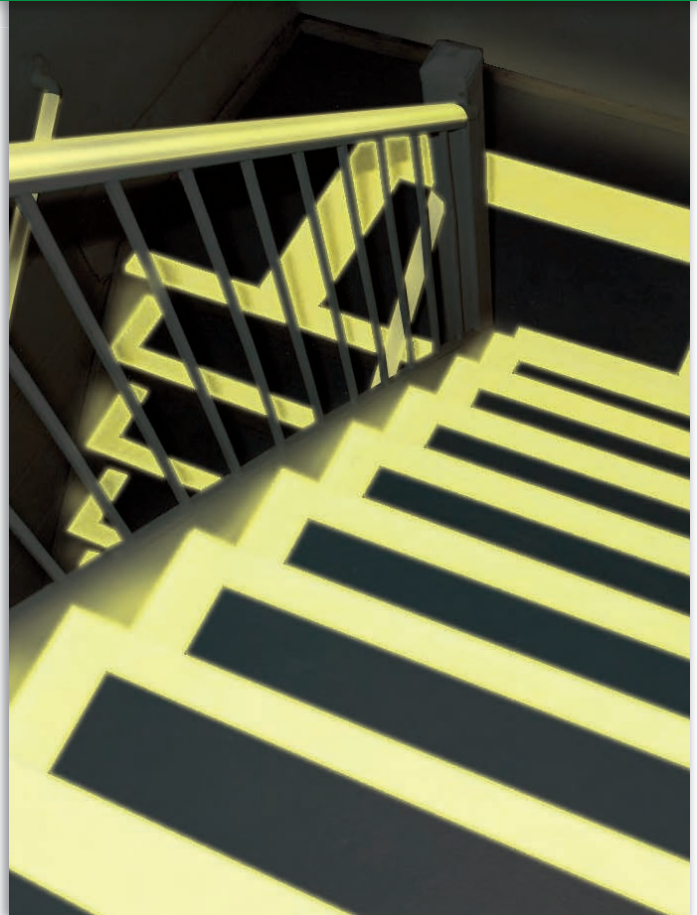
Since then, both NFPA (National Fire Protection Association) and ICC (International Code Council) have added photoluminescent egress path markings to their domestic codes.

Follow the lead of the Code-writing organizations and improve life safety in your buildings, using PERMALIGHT® photoluminescent exit path markings. Take precautions now! Once the emergency occurs, it is too late!

Browse through the following pages.

Contact our Customer Service team for a complimentary consultation, more detailed product information or a customized price quote.

You may place your order by phone, fax or email.



PERMALIGHT® World Trade Center New York 1994 Installation

Table of Contents

Code-compliant UL924 EXIT Signs	3-6
IBC / IFC compliant UL1994 listed Egress Path Markings	7-9
NYC Local Law 26 RS6-1 compliant	10-12
Safety Signs	13
Floor Products in <i>power</i> 150/22	14
Tapes	15
Bumper Guards, Accessories	16-19
Bestsellers	20

Code-compliant UL924 EXIT Signs

- Save Lives
- Save Energy
- Save Money

PERMALIGHT® photoluminescent exit signs are your NON-electric and NON-radioactive exit sign solution.



Compliances:

- » IBC – International Building Code
- » IFC – International Fire Code
- » NFPA 101-Life Safety Code
- » NFPA 5000 – Building Construction and Safety Code
- » The Joint Commission (TJC), formerly JCAHO-Joint Commission on the Accreditation of Healthcare Organizations
- » OSHA 1910.37 (b)(6)
- » UL924 listed for high-location and floor proximity use!
- » UL924 listed for the United States and Canada

GO GREEN – save energy! Gain valuable LEED project points!

LEED, the Leadership in Energy and Environmental Design Green Building Rating System™ is the nationally accepted benchmark for the design, construction and operation of high performance green buildings. Please visit: www.usgbc.org
Possible LEED project credits are categories EA1, MR4 and ID1.1.

Benefits at a glance

- | | |
|------------------------------------------|-------------------------------------------------------------------------------------------|
| » Non-electrical | → Easy do-it-yourself installation using a screw driver.
No electrician needed. |
| » Non-radioactive, Non-toxic | → No radioactive waste recycling fees, as you have with self-luminous tritium EXIT signs. |
| » No light bulbs to change | → Maintenance free for 25+ years. No expiration date. |
| » Explosion-proof | → Also suited for higher risk environments. |
| » No energy consumption | → Savings on your electricity bill. |
| » 3 different materials available | → Plastic, aluminum and acrylic. |
| » Impact resistant | → Suited for high-location and floor proximity installation. |

Energy-efficient Photoluminescent EXIT Signs

By NFPA and ICC-codes, exit signs shall be listed in accordance with UL924 *Standard for Emergency Lighting* and function for 90 minutes in case of primary power loss.

PERMALIGHT® Photoluminescent EXIT signs were tested by Underwriters Laboratories and ETL Intertek Testing respectively in compliance with UL924, listed for both the United States and Canada.

Activated by 5 foot-candles (54 lux) of ambient fluorescent lighting at all times of building occupancy, PERMALIGHT® UL924-EXIT signs remain legible for 90 minutes after normal lighting has failed, and continue to emit their declining luminance for several days.

Plastic EXIT Signs: the affordable solution



Simply practical: Each sign comes with two self-adhesive chevron stickers. Your advantage: just order the total number of signs needed and attach the desired directional indicator when it comes time to install the sign on-site. There is no need to specify the direction beforehand.



RIGID PVC PLASTIC Sign, UNFRAMED with 4 holes

Description	Dimensions	Item No.
UL924-LISTED EXIT SIGN: unframed, for flat wall installation		
6" letters EXIT in GREEN	7 11/16" x 13"	600117
6" letters EXIT in RED	7 11/16" x 13"	600118
DOUBLE-SIDED UNFRAMED EXIT SIGN (needs clips 600123)		
6" letters EXIT in GREEN	7 11/16" x 13"	600120
6" letters EXIT in RED	7 11/16" x 13"	600121



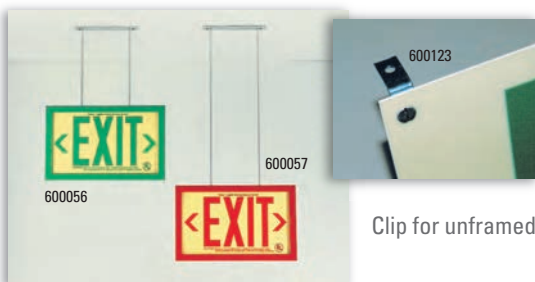
RIGID PVC PLASTIC Sign inside silver colored BRUSHED ALUMINUM FRAME (flat wall mount accessories included)

Description	Dimensions	Item No.
UL924-LISTED EXIT SIGN in BRUSHED ALU FRAME		
ONE 6" green EXIT sign in BRUSHED ALU FRAME	9" x 14 5/8"	600126
ONE 6" red EXIT sign in BRUSHED ALU FRAME	9" x 14 5/8"	600127
DOUBLE-sided 6" green EXIT in BRUSHED ALU FRAME (needs a bracket)		600128
DOUBLE-sided 6" red EXIT in BRUSHED ALU FRAME (needs a bracket)		600129



RIGID PVC PLASTIC Sign inside BLACK ALUMINUM FRAME (flat wall mount accessories included)

Description	Dimensions	Item No.
UL924-LISTED EXIT SIGN in BLACK ALUMINUM FRAME		
ONE 6" green EXIT sign in BLACK FRAME	9" x 14 5/8"	600111
ONE 6" red EXIT sign in BLACK FRAME	9" x 14 5/8"	600113
DOUBLE-sided 6" green EXIT sign in BLACK FRAME (needs a bracket)		600112
DOUBLE-sided 6" red EXIT sign inside BLACK FRAME (needs a bracket)		600114



Brackets for framed Signs and Clips for unframed Signs

Description	Dimensions	Item No.
Two L-shaped Mounting Clips for one unframed Sign	1" x 1"	600123
BRACKET for Ceiling or Perpendicular Mount	1.5"	600055
BRACKET for 10" EXTENDED Ceiling Mount	10"	600056
BRACKET for 19.5" EXTENDED Ceiling Mount	19.5"	600057

» NFPA, IBC and state building code compliant

UL924-compliance tested by Underwriters Laboratories Inc for the United States & Canada.

Viewing Distance: 50 feet. Activation: minimum 5 fc = 54 lux of fluorescent lighting.

ALUMINUM EXIT Signs: especially durable!

For tough environments, like areas with high-pressure steam cleaning, select PERMALIGHT® aluminum EXIT signs. Light weight yet durable, the Aluminum EXIT signs are available unframed with four mounting holes or inside same-colored Aluminum frame with a range of mounting accessories.



Colored ALUMINUM Panel in matching colored ALUMINUM FRAME:

Unit consists of 5 panels: center panel with photoluminescent EXIT letters, 2 colored side panels and 2 optional directional indicator panels < >.



600055 Bracket inside
600026 Framed Sign

Description	Dimensions	Item No.
Red Panels in Red Frame, EXIT with two optional directional indicators	10 1/4" x 18 3/4"	600025
Green Panels in Green Frame, EXIT with two optional directional indicators	10 1/4" x 18 3/4"	600026
Black Panels in Black Frame, EXIT with two optional directional indicators	10 1/4" x 18 3/4"	600027
Also available Double-sided: Plus one of the following brackets to hang signs		
BRACKET for Ceiling or Perpendicular Mount		600055
BRACKET for 10" EXTENDED Ceiling Mount		600056
BRACKET for 19.5" EXTENDED Ceiling Mount		600057



600123 Clip installed on
600001 Unframed Sign

Colored ALUMINUM Panel, UNFRAMED with 4 holes

with photoluminescent EXIT letters and photoluminescent directional indicators < >.

Description	Dimensions	Item No.
Red panel, wording EXIT	8 1/2" x 17"	600001
Red panel, wording <EXIT>		600002
Red panel, wording EXIT>		600003
Red panel, wording <EXIT>		600004
Green panel, wording EXIT	8 1/2" x 17"	600005
Green panel, wording <EXIT>		600006
Green panel, wording EXIT>		600007
Green panel, wording <EXIT>		600008
Also available Double-sided:	contact us	
Two L-shaped Mounting Clips for unframed signs	1" x 1"	600123

» NFPA, IBC and state building code compliant

UL924-compliance tested by ETL Intertek Testing for the United States & Canada.

Viewing Distance: 50 feet. Activation: min. 5 fc = 54 lux of fluorescent lighting.

Acrylic EXIT Signs: elegant design!

» NFPA, IBC and state building code compliant

UL924-compliance tested by ETL Intertek Testing for the United States & Canada.

Viewing Distance: 50 feet. Activation: min. 5 fc = 54 lux of fluorescent lighting.



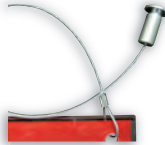
The right accessories for optimal mounting



Easy assembly
with aluminum
barrels



Item No. 600058
4 stand-off barrels
for wall mount



Item No. 600059
Wire suspension
set

Elegant ACRYLIC Panel with opaque background and photoluminescent directional indicators < >



Description UNFRAMED	Dimensions	Item No.
Red background, wording EXIT	8 3/4" x 17 1/4"	600031
Red background, wording <EXIT>		600032
Red background, wording EXIT>		600033
Red background, wording <EXIT>		600034
Green background, wording EXIT	8 3/4" x 17 1/4"	600035
Green background, wording <EXIT>		600036
Green background, wording EXIT>		600037
Green background, wording <EXIT>		600038
Black background, wording EXIT	8 3/4" x 17 1/4"	600039
Black background, wording <EXIT>		600040
Black background, wording EXIT>		600041
Black background, wording <EXIT>		600042
OPTIONAL: Set of 4 Stand-Off Barrels for protruding wall installation	1"	600058
OPTIONAL: Wire Suspension Set to hang sign up to 24" from ceiling	24"	600059

Outdoor / Wet Locations / 100-foot Viewing Distance EXIT Signs:

Listed to Standard UL924 by ETL Intertek Testing for high-location and floor-proximity installation. Surface, flag, ceiling or stem mounted (hardware included). Before installation it must be determined that there is a minimum of 5 fc (54 lux) of fluorescent light on the sign face(s) at all times of building occupancy. UL924-listed for **outdoor/wet locations**.

NEW



Description	Dimensions	Item No.
RED ABS Plastic Panel with Photoluminescent Letters 2 Directional Chevrons (field-applied) Designed for surface, flag, ceiling or conduit mounting (Mounting Bracket included)	8-5/8" x 15-7/8" x 3/4"	600100R
Double-sided EXIT sign	8-5/8" x 15-7/8" x 3/4"	600100R-DB
GREEN ABS Plastic Panel with Photoluminescent Letters 2 Directional Chevrons (field-applied) Designed for surface, flag, ceiling or conduit mounting (Mounting Bracket included)	8-5/8" x 15-7/8" x 3/4"	600100G
Double-sided EXIT sign	8-5/8" x 15-7/8" x 3/4"	600100G-DB
BLACK ABS Plastic Panel with Photoluminescent Letters 2 Directional Chevrons (field-applied) Designed for surface, flag, ceiling or conduit mounting (Mounting Bracket included)	8-5/8" x 15-7/8" x 3/4"	600100B
Double-sided EXIT sign	8-5/8" x 15-7/8" x 3/4"	600100B-DB

IBC / IFC compliant UL1994 listed Egress Path Markings

IBC / IFC Means of Egress Regulations

The IBC and IFC require luminous egress path markings in all assembly, business, educational, institutional/ hospital, mercantile and hotel/ motel buildings having occupied floors located more than 75 feet above the lowest level of fire department vehicle access. Photoluminescent markings are required in all exit enclosures on the steps, landings, handrails, as perimeter demarcation lines, on obstacles and doors from exit enclosures. The IBC & IFC requirements are enforced by building inspectors and fire code officials.



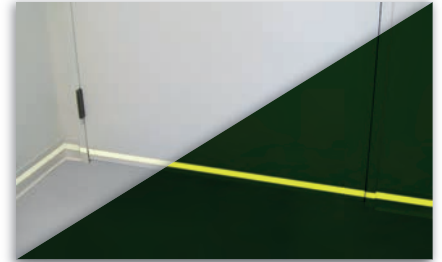
» Steps

marking applied to horizontal leading edge



» Landings

leading edge & landing outline marked



» Perimeter

demarcation lines

PERMALIGHT® Step and Landing Markings, Floor-mounted Demarcation Markings



	Model No.	Item No.	Dimensions	Description
	CC-ALU	83-60207	1" x 48"	Photoluminescent aluminum* strip with foamy adhesive backing. (* Not a thin, flimsy foil but a durable, semi-stiff aluminum metal). Floor-suitability tested by Underwriters Laboratories Inc.
	CC-AST	83-1780	1" x 52 ft.	Photoluminescent anti-slip tape with self-adhesive backing. Slightly structured anti-slip surface. Floor-suitability tested by Underwriters Laboratories Inc.
	CC-AST	83-1780L	1" x 79 ft.	
	CC-AST	83-0780	2" x 52 ft.	
	CC-AST	83-0780L	2" x 79 ft.	
	CC-NOSING	83-40447L	2-5/8" x 1-1/8" x 48"	90° angled aluminum stair nosing (silver-color anodized) with photoluminescent, anti-slip gritty aluminum strip and black, anti-slip gritty insert. Floor-suitability tested by Underwriters Laboratories Inc. Custom-lengths available – Call us!

The right accessories are important for durable, fast and efficient installations. Here are the most important ones at a glance.....



3M Safety-Walk™ Primer 901

One quart covers approximately 35 square feet.

Description	Size	Item No.
Primer	1 Quart	83-0781



Edge Sealing Acrylic

Lacquer, This 0.528 pint (250 ml) bottle yields approx. 150 linear feet.

Description	Size	Item No.
Acrylic Lacquer	0.528 pint	83-0783

Pressure roller

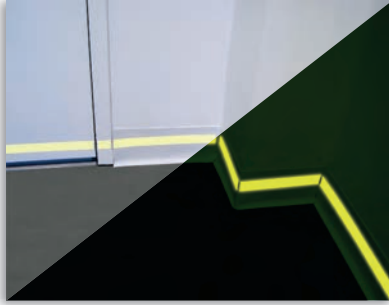
To firmly press-apply self-adhesive tapes for a firm bond:



Description	Item No.
1-3/4" Roller Width	86-7006

IBC / IFC compliant UL1994 listed Egress Path Markings

PERMALIGHT® Wall-mounted Demarcation Markings



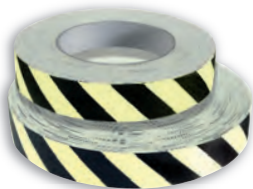
Model No.	Item No.	Dimensions	Description
CC-TAPE	82-40708	1" x 82 ft.	Photoluminescent polyester tape self-adhesive backing
CC-TAPE	82-40708L	1" x 164 ft.	
CC-TAPE	82-40709	2" x 82 ft.	
CC-TAPE	82-40709L	2" x 164 ft.	
CC-ALU	83-60207	1" x 48"	Photoluminescent aluminum* strip with foamy adhesive backing. (* Not a thin, flimsy foil but a durable, semi-stiff aluminum metal)

PERMALIGHT® Handrail Markings



Model No.	Item No.	Dimensions	Description
CC-TAPE	82-40708	1" x 82 ft.	Photoluminescent polyester tape self-adhesive backing
CC-TAPE	82-40708L	1" x 164 ft.	
CC-TAPE	82-40709	2" x 82 ft.	
CC-TAPE	82-40709L	2" x 164 ft.	

PERMALIGHT® Obstacle Markings



Model No.	Item No.	Dimensions	Description
CC-TAPE	82-44151	1" x 82 ft.	Photoluminescent/Contrast black obstacle marking polyester thin tape with self-adhesive backing
CC-TAPE	82-44151L	1" x 164 ft.	

PERMALIGHT® Door Hardware Markings and Door Frame Markings





Model No.	Item No.	Dimensions	Description
CC-TAPE	82-40708	1" x 82 ft.	Photoluminescent polyester tape self-adhesive backing
CC-TAPE	82-40708L	1" x 164 ft.	Photoluminescent polyester tape self-adhesive backing
CC-TAPE	82-40709	2" x 82 ft.	Photoluminescent polyester tape self-adhesive backing
CC-TAPE	82-40709L	2" x 164 ft.	Photoluminescent polyester tape self-adhesive backing
CC-TAPE	82-60204	4" x 4"	Photoluminescent Door Handle Backing sticker, self-adhesive
CC-RIGIDX	82-7748	4" x 4"	Photoluminescent Rigid PVC Door Handle Backing, self-adhesive
CC-ALU	83-60207	1" x 4 ft.	Photoluminescent aluminum strip with self adhesive backing – on door frame

IBC / IFC compliant UL1994 listed Egress Path Markings





Emergency Exit Symbols on Doors from Exit Enclosures

Right	Model No.	Item No.	Material	Dimensions	Left	Model No.	Item No.	Material	Dimensions
	CC-ALU	86-42867	aluminum, non-adhesive	5-3/4" x 5-3/4"		CC-ALU	86-42947	aluminum, non-adhesive	5-3/4" x 5-3/4"
	CC-ALU	86-42867F	aluminum, self-adhesive	5-3/4" x 5-3/4"		CC-ALU	86-42947F	aluminum, self-adhesive	5-3/4" x 5-3/4"
	CC-ALU	86-42887	aluminum, non-adhesive	7-7/8" x 7-7/8"		CC-ALU	86-42967	aluminum, non-adhesive	7-7/8" x 7-7/8"
	CC-ALU	86-42887F	aluminum, self-adhesive	7-7/8" x 7-7/8"		CC-ALU	86-42967F	aluminum, self-adhesive	7-7/8" x 7-7/8"

Directional Signage

Combine one running man symbol from above door signs with one of these arrows to create directional signage. With only 4 symbols, you can mark any direction of your egress path. Just place one running man sign with one arrow on a landing wall or on a basement wall pointing up to the ground floor. The arrows can be turned, so that each possible direction can be indicated.

Straight	Model No.	Item No.	Material	Dimensions	Inclined	Model No.	Item No.	Material	Dimensions
	CC-ALU	86-43027	aluminum, non-adhesive	5-3/4" x 5-3/4"		CC-ALU	86-43107	aluminum, non-adhesive	5-3/4" x 5-3/4"
	CC-ALU	86-43027F	aluminum, self-adhesive	5-3/4" x 5-3/4"		CC-ALU	86-43107F	aluminum, self-adhesive	5-3/4" x 5-3/4"
	CC-ALU	86-43047	aluminum, non-adhesive	7-7/8" x 7-7/8"		CC-ALU	86-43127	aluminum, non-adhesive	7-7/8" x 7-7/8"
	CC-ALU	86-43047F	aluminum, self-adhesive	7-7/8" x 7-7/8"		CC-ALU	86-43127F	aluminum, self-adhesive	7-7/8" x 7-7/8"



Floor Identification Signs

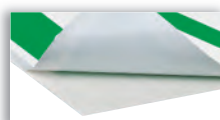
Model No.	Item No.	Dimensions	Description
CC-RIGIDX	86-18128	min. 18" x 12"	Custom fabricated Floor/Stairway Identification Sign in minimum 18" x 12" and tactile Floor Level Sign in raised characters & Braille. Made of rigid PVC with adhesive backing.
CC-ALU	86-18127	min. 18" x 12"	Custom fabricated Floor/Stairway Identification Sign in minimum 18" x 12" and tactile Floor Level Sign in raised characters & Braille. Made of aluminum with adhesive backing.



Model No.	Item No.	Dimensions	Description
CC-RIGIDX	600098HIF	5" x 5"	self-adhesive NO EXIT sign, rigid PVC

PERMALIGHT® - Your Custom Signage Specialist

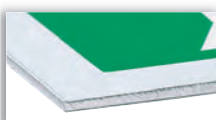
- American PERMALIGHT®, Inc. can custom-produce photoluminescent signage
- » On various substrates (adhesive film, rigid PVC, aluminum, acrylic)
 - » In a range of luminance performances (from standard to high-performance *power*)
 - » In a variety of contrast colors
 - » With your site-specific text, in any language, with a graphic image of your choice



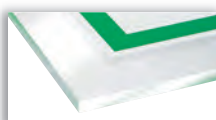
Self-adhesive Film



Rigid PVC



Aluminum



elegant Acrylic



ADA Signs



Floor Identification Signs

Now also available:

New York City Local Law 141 compliant UL1994-listed Photoluminescent Egress Path Markings! Contact us about those NEW NYC LL141 requirements: **Toll Free Tel 888-737-6254** info@americanpermalight.com

MEA-listed Photoluminescent Exit Path Markings for New York City

NYC Local Law 26 RS6-1

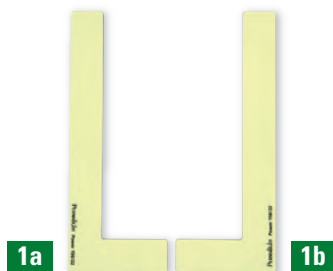
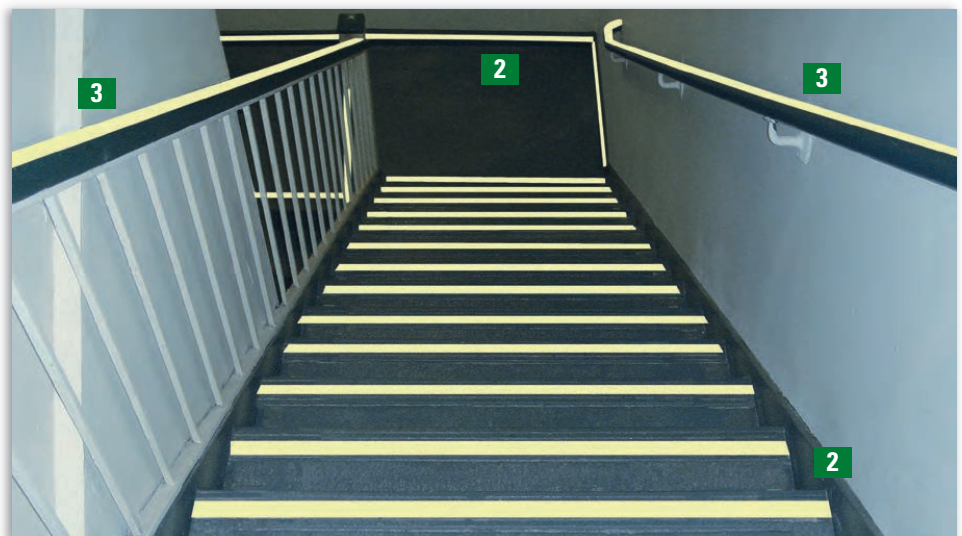
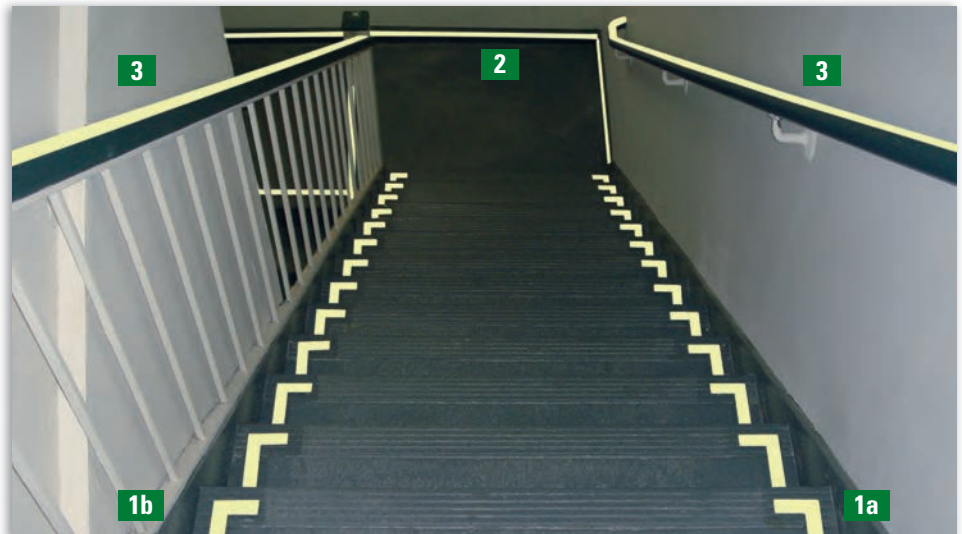
In 2004, the NYC Department of Buildings published Local Law 26 which enforces a range of improvements for NYC multi-story buildings, including photoluminescent requirements that are detailed in Reference Standard RS6-1.

New York City Building Code

The **2008 New York City Building Code** § 403.16 requires **all new high-rise buildings** to be provided with photoluminescent exit path markings (except exit paths serving Group R-2 residential apartment houses). Photoluminescent markings have to pass a minimum of five tests (brightness, washability, non-toxicity, non-radioactivity, surface flammability) to obtain an MEA (Materials & Equipment Acceptance) number. PERMALIGHT® products successfully passed these 5 plus two optional tests (rate of burning & UV-resistance), confirming the superior performance of PERMALIGHT® materials. Quickly and easily mark your exit paths with these compliant PERMALIGHT® markers. The excellent adhesive properties guarantee a long lasting durability.

Choose from 2 MEA-listed material options:

PERMALIGHT® Aluminum:
MEA 302-05-M BR: 36-9-6 UV
PERMALIGHT® Flexible Vinyl:
MEA 303-05-M BR: 32-8-5 UV



1 L-shaped step markers, self-adhesive.

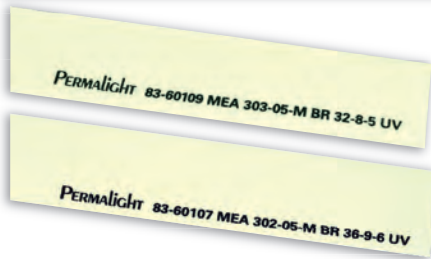
Both the left and right side need to be marked.

Description	Dimensions	Material	Item No.
1a Left side step marker	1" x 8"	Flexible Vinyl, anti-slip surface, thin adhesive	83-60029
		Aluminum, foamy adhesive	83-60027
1b Right side step marker	1" x 8"	Flexible Vinyl, anti-slip surface, thin adhesive	83-60039
		Aluminum, foamy adhesive	83-60037



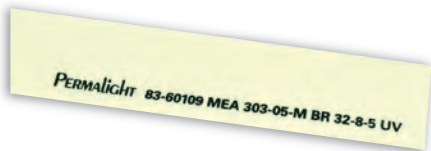
Contact us!

MEA-listed Photoluminescent Exit Path Markings for New York City



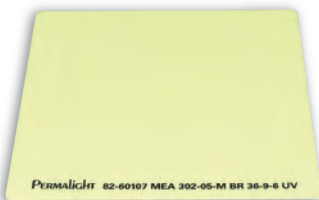
2 Wall and Floor-mounted Perimeter Demarcation Lines, Leading Edge of Step Markers

Description	Dimensions	Item No.
Flexible Vinyl Strip (also called: 83-60069), thin adhesive	1" x 4 feet	83-60109
Aluminum Strip, foamy adhesive	1" x 4 feet	83-60107



3 Handrail Marking, Push Bar Marking

Description	Dimensions	Item No.
Flexible Vinyl Strip (also called: 83-60069), thin adhesive	1" x 4 feet	83-60109



4 Door Handle Marking, self-adhesive

The photoluminescent backing ensures that the door handle is easy to find in the dark.

Description	Dimensions	Item No.
Aluminum with thin adhesive	4" x 4"	82-60107



5 Obstacle Marking Strip, self-adhesive

Required to mark obstacles at or below 78", projecting more than 4" into the exit path.

Description	Dimensions	Item No.
Bendable Vinyl Strip with alternating black stripes, suitable on flat and round obstacles	1" x 4 feet	83-60089

Don't forget to order these practical accessories!

The right accessories are important for durable, fast and efficient installations. Here are the most important ones at a glance.....



3M Safety-Walk™ Primer 901

One quart covers approximately 35 square feet.

Description	Size	Item No.
Primer	1 Quart	83-0781



Edge Sealing Acrylic Lacquer

This 0.528 pint (250 ml) bottle yields approx. 150 linear feet.

Description	Size	Item No.
Acrylic Lacquer	0.528 pint	83-0783

Pressure roller

To firmly press-apply self-adhesive tapes for a firm bond:



Description	Item No.
1-3/4" Roller Width	86-7006

MEA-listed Photoluminescent Aluminum Signage for New York City

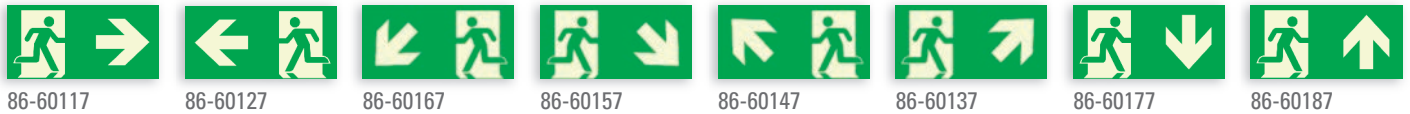


- Rigid durable Aluminum
 - Foamy adhesive backing
 - Also suitable for slightly uneven surfaces
 - UV resistant
 - NYC-listed
- MEA 302-05-M BR: 36-9-6 UV

Contact us!



Signs in 4.5" x 8"



86-60117

86-60127

86-60167

86-60157

86-60147

86-60137

86-60177

86-60187

Signs in 8" x 14"



86-60437

86-60207

86-60427

Signs in 10" x 9"



86-60267

86-60277

86-60257

86-60247

Signs in 4.5" x 9.5"



86-60287

86-60547

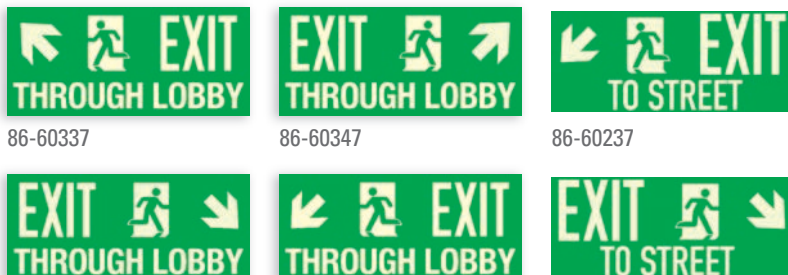
Sign in 1.5" x 6"



86-60297

**All PERMALIGHT®
MEA-listed products
are UV-resistant**

Signs in 8" x 18"



86-60337

86-60347

86-60237

86-60217

86-60327

86-60227

**You find PERMALIGHT®
MEA-listed Exit Path
Markings in hundreds
of NYC high-rise office
buildings.**

PERMALIGHT® Photoluminescent Emergency & Fire Safety Signs in *plus 55/8* luminance

Often safety signs are printed onto white plastic. Should the power fail, those signs are not visible in the dark. PERMALIGHT® safety signs light up in the dark and show their message. They are available in material types:

» **Easy peel-and-stick, self-adhesive film**

Simply take off the paper backing and apply the signs to a smooth, clean surface. Also great on columns, pipes and similar curved surfaces.

» **Durable rigid PVC, non-adhesive**

These stiff, smooth signs work great on uneven, rough surfaces, even on brick wall. Attach with double-sided tape or Liquid Adhesive.

EXIT 8" x 12"



Material	Item No.
Rigid, green	600069
S/A Film, green	600071
Rigid, reflective green letters	600101

Reflective + Glowing



EXIT 8" x 12"



Material	Item No.
Rigid, red	600068
S/A Film, red	600070
Rigid, reflective red letters	600100

Reflective + Glowing



Emergency EXIT, 14" x 10"

Material	Item No.
Film	600083
Rigid	600082



Arrow, long 4" x 12"

Material	Item No.
Film	600093
Rigid	600092



NO EXIT 5" x 5"

Material	Item No.
w.adhesive	600098F
Rigid	600098
rigid PVC	600098-HI

Don't see the text
or graphic you need?

Contact us!



Fire EXIT 14" x 10"

Material	Item No.
Film	600077
Rigid	600076



Fire Hose 8" x 12"

Material	Item No.
Film	600067
Rigid	600066



Fire Alarm 8" x 12"

Material	Item No.
Film	600065
Rigid	600064



Fire Extinguisher 8" x 12"

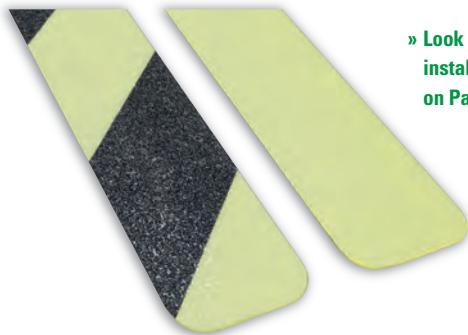
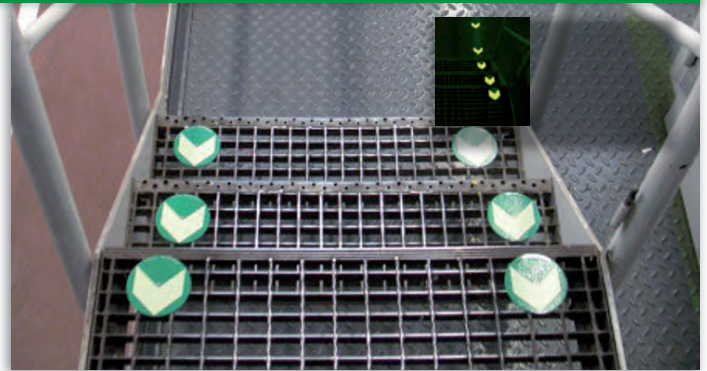
Material	Item No.
Film	600061
Rigid	600060



Fire Extinguisher 4" x 20"

Material	Item No.
Film	600063
Rigid	600062

Anti-Skid Floor Markings



» Look for helpful installation accessories on Page 15

3M SAFETY WALK™ Anti-Skid Strips

» outstanding slip resistance

Increased slip-resistance due to coarse/rough 3M Safety Walk™ surface: abrasive particles are embedded into a tough clear polymer backing.

PERMALIGHT® *power 150/22*

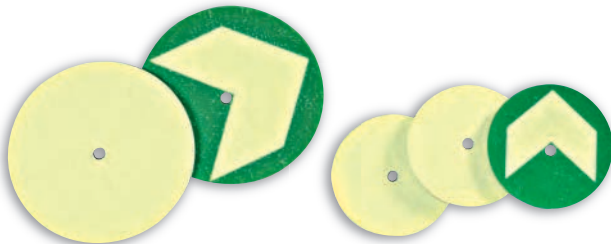


Dimensions	Description	Item No.
2" x 31"	all photoluminescent	83-3215
2" x 31"	photoluminescent/black	83-3415

Durable Grating / Catwalk markings

Two sizes available. Also available printed with a directional arrow. Very good skid prevention. Ten (10) discs per package.

Description	Ø	Material	Item No.
no arrow	2-3/8"	Aluminum	83-40227
with arrow	2-3/8"	Aluminum	83-40237
no arrow	4"	Aluminum	83-40247
with arrow	4"	Aluminum	83-40257



» also with directional arrow



Anti-skid Dots

Self-adhesive anti-skid dots for installing a guidance system. One dot per foot is ideal. Very good skid prevention. Ten (10) dots per package.

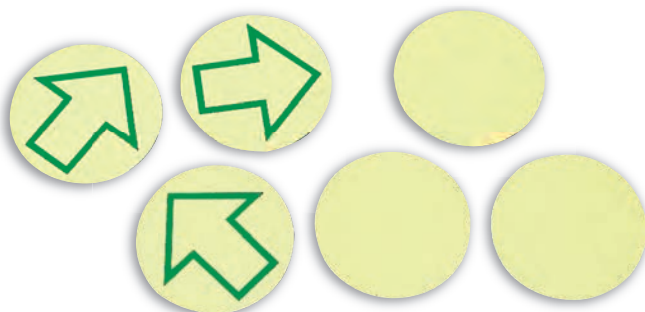
Description	Ø	Material	Item No.
no arrow	2-3/8"	Polycarbonate	83-40089
with arrow	2-3/8"	Polycarbonate	83-40099
no arrow	4"	Polycarbonate	83-40109
with arrow	4"	Polycarbonate	83-40119



Anti-Skid Dots

These self-adhesive anti-skid dots have the same structured, gritty vinyl surface as PERMALIGHT® Anti-Skid Tape rolls CC-AST on page 15. Twelve identical 3.5" diameter dots per sheet: either all photoluminescent or with a green arrow.

Description	Ø	Material	Item No.
12 dots with green arrow	3.5"	Vinyl	83-0787
12 dots all photoluminescent	3.5"	Vinyl	83-0788



» **Not Building Code compliant**

Photoluminescent Wall & Handrail Tapes – the easy peel-and-stick solution!

Easily apply this self-adhesive tape in *plus 55/8* luminance to

- » mark handrails
- » outline exit door frames
- » point out fire fighting equipment

- » highlight emergency equipment
- » mark door handles, push bars and more.

Also available in 164-foot long rolls for big installation projects.



Dimensions	Material	Item No.
1" x 82 feet	Tape	A82-0708M
1" x 164 feet	Tape	A82-0708L
2" x 82 feet	Tape	A82-0709M
2" x 164 feet	Tape	A82-0709L
4" x 82 feet	Tape	A82-0710M
4" x 164 feet	Tape	A82-0710L



Brighter Luminance – Increased Safety!

This PERMALIGHT® wall & handrail tape is UL-listed as Model CC-TAPE to UL1994 -Standard for Luminous Egress Path Marking Systems. By choosing this PERMALIGHT® high-performance wall tape, you provide your building occupants with a higher initial luminance and a longer lasting glow during darkness situations. This helps speed up the evacuation and increases orientation in the darkened environment.

» **our best-selling wall & handrail tape!**



Model No.	Dimensions	Item No.
CC-TAPE	1" x 82 ft.	82-40708
CC-TAPE	1" x 164 ft.	82-40708L
CC-TAPE	2" x 82 ft.	82-40709
CC-TAPE	2" x 164 ft.	82-40709L



PERMALIGHT® anti-slip floor tape, intended for indoor applications, may be used to mark uneven floor levels, single steps or a flight of stairs. This tape is **UL-listed as Model CC-AST to UL1994 -Standard for Luminous Egress Path Marking Systems** and successfully passed the requirements of UL410 - Standard for Slip Resistance of Floor Surface Materials. The 2" width complies with the ADA (Americans with Disabilities Act) requirements: California Building Code "Striping for the Visually Impaired", requiring the upper approach and the lower tread of each flight of interior stairs to be marked by a slip resistant strip of clearly contrasting color with at least 2 inches width.

» **Our best-selling floor tape!**



Anti-skid Tape Roll

This tape has a structured, gritty vinyl surface and is best suited for smooth floor surfaces. Self-adhesive.

Dimensions	Material	Item No.
1" x 52 ft.	all photoluminescent	83-1780
1" x 79 ft.	all photoluminescent	83-1780L
2" x 52 ft.	all photoluminescent	83-0780
2" x 79 ft.	all photoluminescent	83-0780L

Directional Marker for Floors

Self-adhesive safety markers for indicating directions along an evacuation route. Simply insert between two anti-skid guide markers or glue separately. Very good skid prevention. PERMALIGHT® power 150/22

Dimensions	Material	Item No.
2" x 4"	Polycarbonate	83-40129

Don't forget to order these practical accessories!

The right accessories are important for durable, fast and efficient installations. Here are the most important ones at a glance.....



3M Safety-Walk™ Primer 901

One quart covers approximately 35 square feet.



Edge Sealing Acrylic Lacquer

This 0.528 pint (250 ml) bottle yields approx. 150 linear feet.

Pressure roller

To firmly press-apply self-adhesive tapes for a firm bond:



Description	Size	Item No.
Primer	1 Quart	83-0781

Description	Size	Item No.
Acrylic Lacquer	0.528 pint	83-0783

Description	Item No.
1-3/4" Roller Width	86-7006

Foamy cushioning Wall & Corner Guards

Protruding corners, edges and objects pose a high risk of personal injury. With our Bumper Guards made from recyclable polyurethane foam, you increase safety, minimize work-related injuries and protect walls and equipment throughout your facilities. The flexible material absorbs the force of impact and gently bounces back. These durable guards measure 39-3/8" long (a few types also in 16 foot) and are available in a choice of colors, including a highly visible daytime fluorescent yellow with additional darkness glow. The photoluminescent versions offer a long-lasting luminescence for better visibility in sudden darkness. All the guards are self-adhesive, except Type B which simply slides into place and can be secured with adhesive (83-0789) if necessary.

- Prevent injuries
- Protect machinery, walls, equipment
- Alert to hazards
- Easy to install

Foamy cushioning material

- Flexible Polyurethane Foam
- Cut to size using a utility knife
- Aging resistant
- Foam Temperature resistant from -31° F to 176° F

Easy Installation:

- Acrylic Adhesive on most types
- Strong adhesive bond (21 N per inch)
- Sticks well on clean, non-greasy surfaces
- Adhesive Temperature resistant from -40° F to 212° F
- On difficult surfaces, either drill holes through foam bumper or use bumpers: H+ or S1 with Steel Support



The right bumper guard for every purpose

Black-yellow: Outdoor and Indoor use. Available in all types. Yellow foam.

Photoluminescent/red: Indoor use only! Soft yellowish during the day lights up with a yellow glow in the dark. Black foam.

Photoluminescent/black: Indoor use only! Soft yellowish during the day lights up with a yellow glow in the dark. Black foam.

Fluorescent + Photoluminescent/black: Indoor use only! Very bright alerting daylight fluorescence combined with a darkness photoluminescent glow/contrasting black. power 140 luminance. Black foam.

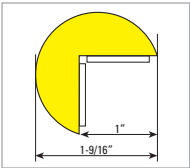
Reflective: Brightly visible when vehicle headlights and flashlight beams shine on them.



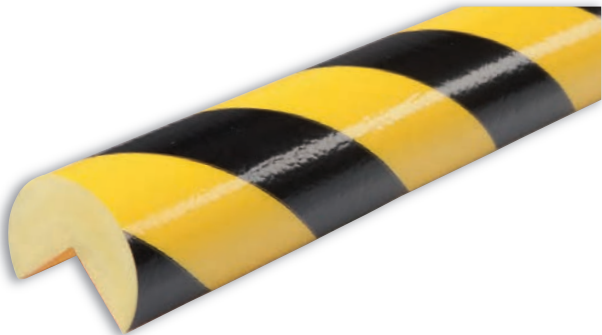


Type A: 39-3/8" x 1-9/16"

Corner protection (self-adhesive), Net Weight: 1 lb

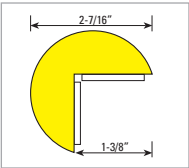


Available Colors	Item No.
Black-yellow in 39-3/8"	82-0900
Black-yellow in 16 feet	82-0900-5
Red-photoluminescent	82-0905
Black-photoluminescent	82-0910
Black-fluorescent/photoluminescent	82-0911



Type A+: 39-3/8" x 2-7/16"

Corner protection (self-adhesive), Net Weight: 2 lb 8 oz.

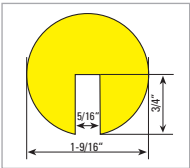


Available Colors	Item No.
Black-yellow in 39-3/8"	82-25485



Type B: 39-3/8" x 1-9/16"

Edge protection (non-adhesive slide on), Net Weight: 1 lb 5 oz.

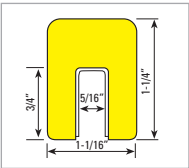


Available Colors	Item No.
Black-yellow in 39-3/8"	82-0920
Black-yellow in 16 feet	82-0920-5
Black-photoluminescent	82-0930
Black-fluorescent/photoluminescent	82-0931



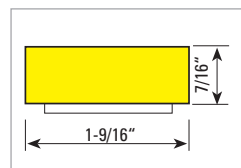
Type G: 39-3/8" x 1-1/16" x 1-1/4"

Edge protection (self-adhesive), Net Weight: 1 lb



Available Colors	Item No.
Black-yellow	82-9404

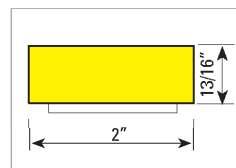
Bumper Guards



Type F: 39-3/8" x 1-9/16" x 7/16"

Flat surface protection (self-adhesive), Net Weight: 11 oz.

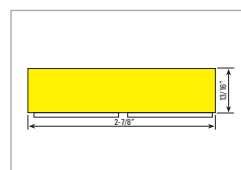
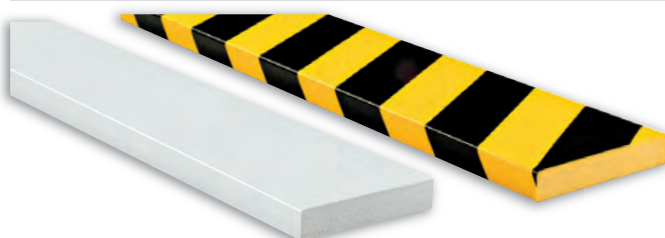
Available Colors	Item No.
Black-yellow in 39-3/8"	82-5397
Black-yellow in 16 feet	82-5397-5



Type D: 39-3/8" x 2" x 13/16"

(self-adhesive), Net Weight: 1 lb. 4 oz.

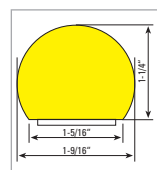
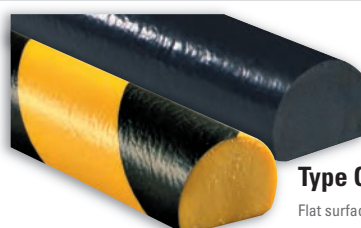
Available Colors	Item No.
Black-yellow	82-0955



Type S1: 39-3/8" x 2-7/8" x 13/16" our thickest, toughest type

Flat surface protection (self-adhesive), Net Weight: 2 lbs 4 oz.

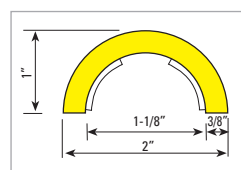
Available Colors	Item No.
Black-yellow	82-14753
All-White	82-14753WHITE



Type C: 39-3/8" x 1-9/16"

Flat surface protection (self-adhesive), Net Weight: 1 lb 2 oz.

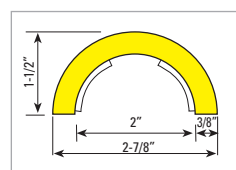
Available Colors	Item No.
Black-yellow in 39-3/8"	82-0940
Black-yellow in 16 feet	82-0940-5
All-Black	82-0940BLACK
Black-photoluminescent	82-0950
Black-fluorescent/photoluminescent	82-0951



Type R1: 39-3/8" x 2" x 1"

Pipe protection (self-adhesive), Net Weight: 1 lb
*additional support possible with cable ties

Available Colors	Item No.
Black-yellow	82-14754

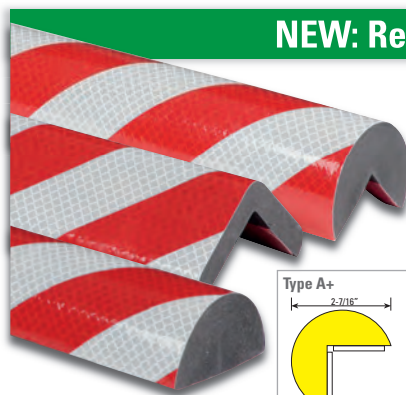


Type R2: 39-3/8" x 2-7/8" x 1-1/2"

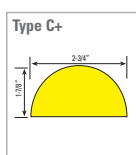
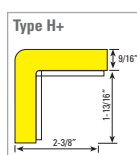
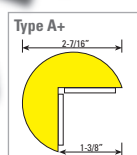
Pipe protection (self-adhesive). Net Weight: 1.5 lbs
*additional support possible with cable ties

Available Colors	Item No.
Black-yellow	82-14755

NEW: Reflective Bumper Guards – ideal where Vehicles are present



Steel Mounting Support



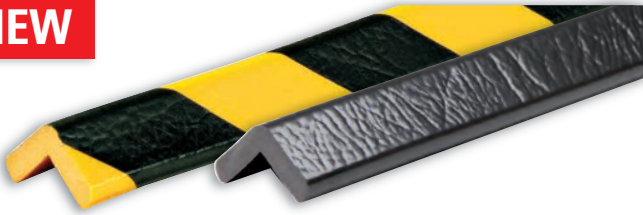
You can now get our proven-quality foamy bumpers with a **reflective surface in silver/contrasting red**.

Choose from 3 types either with self-adhesive backing or with stainless-steel support. 39-3/8" long

	Version	Item No.
Type A+ Corner protection	self-adhesive	82-30787
	with Stainless Steel support	82-30802
Type H+ Corner protection	self-adhesive	82-30794
	with Stainless Steel support	82-30806
Type C+ Flat surface	self-adhesive	82-30793
	with Stainless Steel support	82-30803

Bumper Guards + Accessories

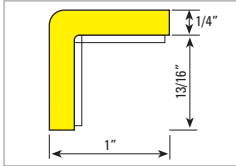
NEW



Type E: 39-3/8" x 1" x 1"

Corner protection (self-adhesive), Net Weight: 9 oz.

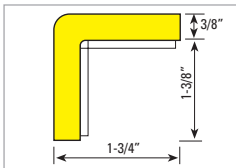
Available Colors	Item No.
Black-yellow in 39-3/8"	82-5396
Black-yellow in 16 foot	82-5396-5
All-black in 39-3/8"	82-5396BLACK



Type H: 39-3/8" x 1-3/4" x 1-3/4"

Corner protection (self-adhesive), Net Weight: 1.5 lbs

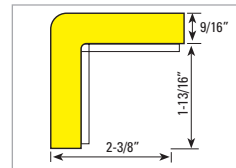
Available Colors	Item No.
Black-yellow in 39-3/8"	82-0416



Type H+: 39-3/8" x 2-3/8" x 2-3/8"

Corner protection (self-adhesive), Net Weight: 3.5 lbs

Available Colors	Item No.
Black-yellow in 39-3/8"	82-0426



With Steel Support



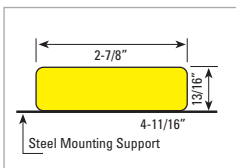
(with 6 screws
and 6 screw anchors)

Type S1 St: 39-3/8" x 2-7/8" x 13/16"

our thickest, toughest type

Net Weight: 3 lbs 13 oz.

Available Colors	Item No.
Black-yellow	82-0437

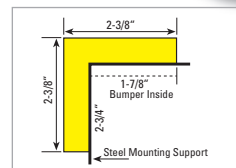


(with 6 screws
and 6 screw anchors)

Type H+ St: 39-3/8" x 2-3/8" x 2-3/8"

Net Weight: 3 lbs 13 oz.

Available Colors	Item No.
Black-yellow	82-0436



Accessories

Adhesive for Bumper Guards



Contact adhesive for improved attachment of Bumper Guards, especially Type B slide-on for I-beam shelves.

Ships UPS Ground only.
UPS Haz Mat surcharges apply.

Description	Item No.
Adhesive for Bumper Guards	83-0789

Black Protective Corners (self-adhesive)

2D: 1-7/8" x 1.5", Net Weight: 1.4 oz.

3D: 1-7/8" x 1-7/8" x 1.5", Net Weight: 1.5 oz.



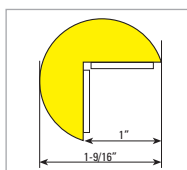
Item No.	82-0970	Item No.	82-0975
----------	---------	----------	---------



Bumper Guards

Type A: 39-3/8" x 1-9/16"

Corner protection (self-adhesive), Net Weight: 1 lb



Available Colors

Item No.

Black-yellow in 39-3/8"

82-0900

Black-yellow in 16 feet

82-0900-5

See our full Foam Guards product line starting on Page 16.

Plastic EXIT Signs: the affordable solution



**RIGID PVC PLASTIC Sign inside silver colored
BRUSHED ALUMINUM FRAME** (flat wall mount accessories included)

Description

Dimensions

Item No.

ONE 6" red EXIT sign in **BRUSHED ALU FRAME**

9" x 14 5/8"

600127

See our full UL924-EXIT product line starting on Page 3.

