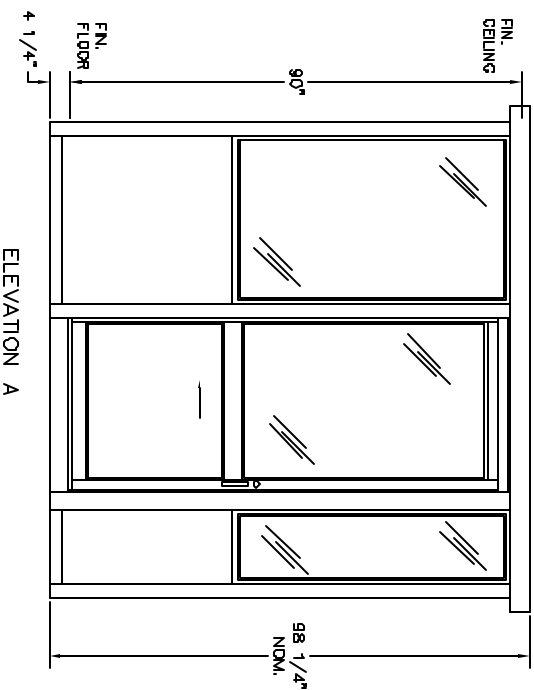


PLAN VIEW

DURALUMINUM MODEL 9676SL BUILDING NOTES :

- ① 100 AMP SINGLE PHASE 12 CIRCUIT LOAD CENTER W/MAIN BKR.
- ② 115V DUPLEX, 230V OUTLET
- ③ 34 WATT SURFACE MTD. FLUORESCENT LIGHT
- ④ 22" DEEP SHELF
- \* 3" OVERHANG EXTERIOR MEMBRANE ROOF
- \* 1- HEAVY DUTY ALUMINUM DOOR W/HALF GLASS AND ADA HANDLES
- \* GLAZING- CLEAR TEMPERED GLASS
- \* ALUMINUM TREAD PLATE FLOOR
- \* UL LABEL FOR COMPLIANCE WITH THE N.E.C.



ELEVATION A

NOTES:  
 SLIDING DOORS AVAILABLE BOTH SIDES- SUFFIX DSL  
 CASHIER WINDOW AVAILABLE IN DOOR- SUFFIX CSL  
 SWING DOOR AVAILABLE IN REAR OF BOOTH- SUFFIX SW

*portaking*  
**PORTA-KING BUILDING SYSTEMS**

4133 SHORELINE DRIVE EARTH CITY, MISSOURI 63045  
 1-800-456-5464 FAX 314-291-2857 www.portaking.com

TITLE

DURALUMINUM MODEL 9676SL