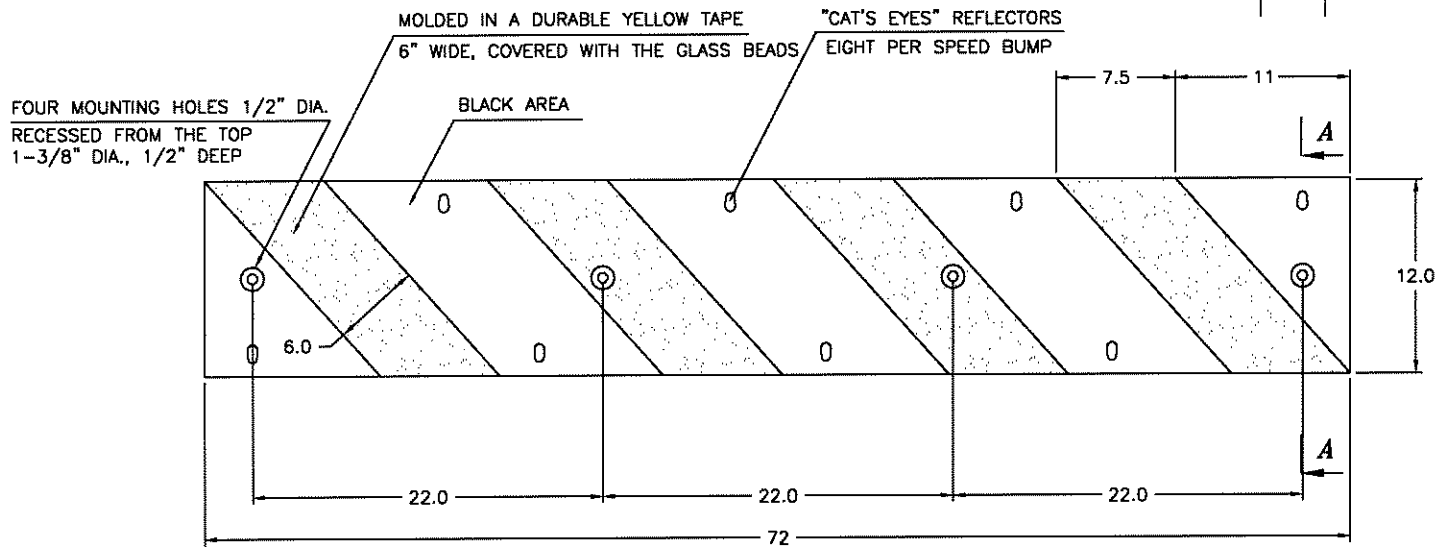


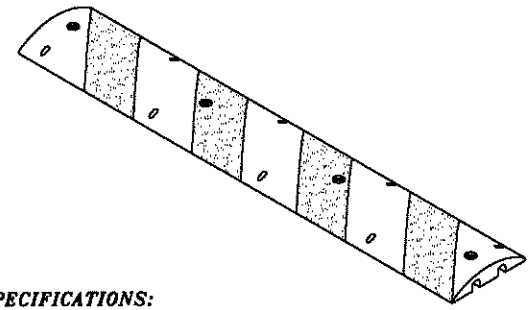
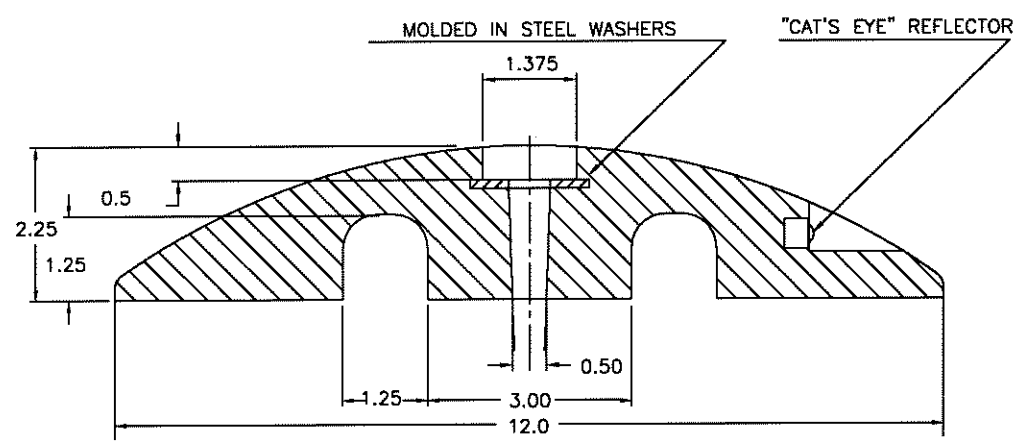
# Easy Rider

## TOP VIEW

REVISIONS		
REV.	DESCRIPTION	DATE



## SECTION A-A



### PRODUCT SPECIFICATIONS:

1. MATERIAL: COMPRESSION MOLDED RECYCLED RUBBER COMPOSITE
2. NOMINAL DIMENSIONS: 72"L x 12"W x 2.25"H
3. FOUR MOUNTING HOLES 1/2" DIA. (RECESSED 1-3/8" DIA. AND 1/2" DEEP, TO ACCOMMODATE SPIKE'S HEAD) ARE PROVIDED FOR INSTALLATION WITH SPIKES OR LAG BOLTS
4. MOLDED DURABLE, YELLOW AND REFLECTIVE PREFORMED PAVEMENT MARKING TAPE (ASTM D4061), 6" WIDE, COVERED WITH GLASS BEADS, PROVIDES GOOD VISIBILITY DURING DAY AND NIGHT
5. EIGHT "CAT'S EYES" REFLECTORS (FOUR PER SIDE) PROVIDE ADDITIONAL REFLECTIVITY AT NIGHT
6. WEIGHT OF THE PRODUCT: 76 lbs.

UNLESS OTHERWISE SPECIFIED : DIMENSIONS ARE IN INCHES		<b>RUBBER SPEED BUMP</b> <b>6 FT. MODEL, 2.25" THICK</b>	
DECIMALS	TOLERANCES		
.x	± 1/8"	ANGULAR	± .05°
.xx	± 1/16"		
DRAWN	DATE	SCALE	1=6
CHECKED	DATE	DWG NO.	6SB01-1
DESIGN	DATE	MATERIAL	SHEET
			SIZE C