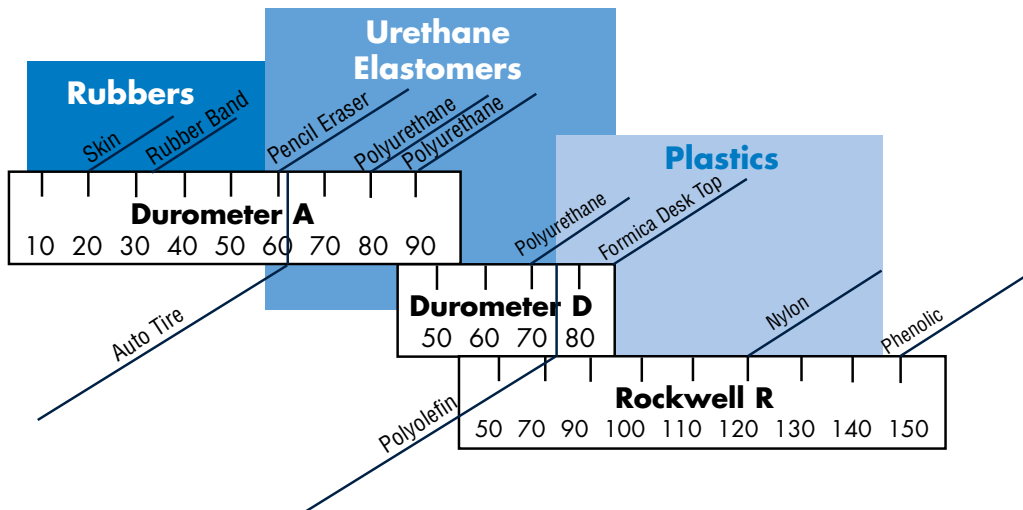


Wheel Hardness Comparison Chart

Wheel Hardness Comparison Chart			
Wheel Type	Tread Material	Durometer	Scale
SR	Soft Tread Rubber	70 - 80	A
HR	Hard Tread Rubber	75 - 85	D
DU	Phenolics	145 - 150	R
UI, UT, UO, UW, UP, UA, INF	Polyurethane	90 - 95	A
UI, UT, UW	80 A Polyurethane	80 - 85	A
UI, UT, UW, SU, MU	70D Polyurethane	70 - 75	D
RI, RA, SW	Rubber	70 - 80	A
RP	Gray Rubber	70 - 80	A
PO	Polyolefin, Polypropylene	55 - 75	D
SW	EHT Rubber	65 - 70	A
FN	Pneumatic	60 - 65	A



Brake Options

A variety of wheel brake options are available from RWM on our swivel and rigid casters depending upon the various series. All are factory-installed; WB, ICWB, FICWB and SICWB models may also be installed in the field. Please see brake chart on page 6 for recommended brake options.

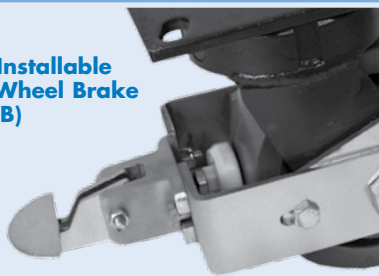
Face Contact Nylon Brake (FCNB)
The Face Contact Nylon Brake is available on the 45 and 46 Series. Nylon brake is corrosion resistant.

Face Contact Nylon Total Lock Brake (FCNTLB)
The Face Contact Nylon Total Lock Brake is available on the 45 and 46 Series. Locks both wheel and swivel action. Nylon brake is corrosion resistant.

Face Contact Steel Total Lock Brake (FCSTLB)
The Face Contact Steel Total Lock Brake is available on the 45 and 46 Series. Brake is front mounted. Locks both wheel and swivel action.

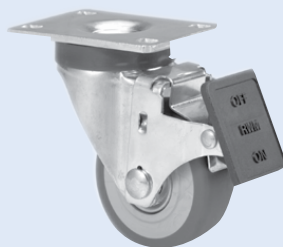
Face Contact Wheel Brake (FCWB)
The face contact wheel brake is engaged by compressing the brake shoe against the face of the wheel by turning a T-handle screw.

Field Installable Cam Wheel Brake (FICWB)



Depressing the pedal engages a non-skid pad against the wheel. Deactivate by moving the foot pedal in the opposite direction. Our field installable Cam Wheel Brakes for the 75 & 76 Series are available for roller, ball and tapered bearings on 6", 8", 10" and 12" wheels.

27 Series Brakes

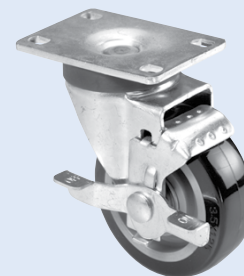


Field Installable Face Contact Brake (ICWB)

Easy field installation, toe operated, easy push pedal, only one rotating part, maintenance free, and corrosion resistant. Available in 3", 3-1/2", 4", & 5" sizes.

Description

- BRAKE-ICWB-27-0312
- BRAKE-ICWB-27-3512
- BRAKE-ICWB-27-0412
- BRAKE-ICWB-27-0512

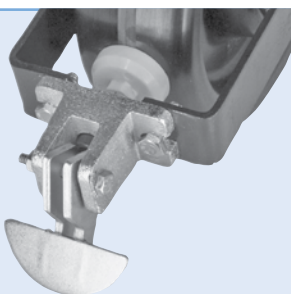


Field Installable Side Action Brake (WB)

Easy field installation, self-adjusts to wheel wear, easy to engage and disengage, and corrosion resistant. Available in 3", 3-1/2", 4", 5" sizes.

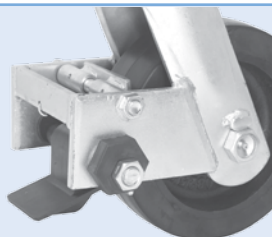
Description

- BRAKE-SIDE-27-0312
- BRAKE-SIDE-27-3512
- BRAKE-SIDE-27-0412
- BRAKE-SIDE-27-0512



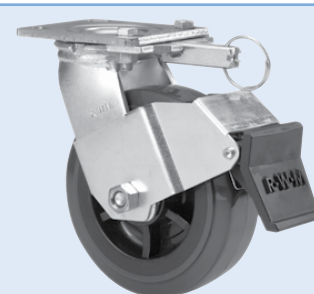
Cam Wheel Brake (CWB)

Depressing the pedal engages a non-skid pad against the wheel. Deactivate by moving the foot pedal in the opposite direction.



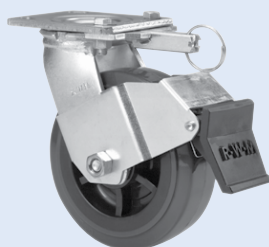
Poly Cam Brake (PCWB)

Depressing the pedal compresses a polyurethane pad against a non-skid metal pad which prevents the wheel from rotating. Adjustments can be made to increase or decrease pressure against the wheel. Also, adjustments can be made to compensate for wear of wheel over time.



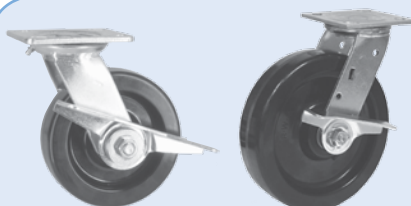
Stainless Steel Field Installable Face Contact Brake (SICWB)

Stainless Steel Field Installable Face Contact Brake is available in 4", 5", 6" and 8" sizes. This brake fits 2" wide wheels only.



Field Installable Face Contact Brake (ICWB)

ICWB is the only face contact brake in the industry that will accommodate a demountable swivel lock and easy field installation. Caster, brake, and DSL can be purchased separately. Patent Pending. Available in 4", 5", 6", & 8" sizes. Easily installs on the 46, 47, 48, 52, 65 and 70 series. This brake fits 2" wide wheels only.



Side Wheel Brake (WB)

Side Wheel Brake is available on 40, 45, 46, 47, 48, 52, 65 and 70 Series. This economical brake is designed to be used on 4" to 8" diameter wheels (1-1/2" and 2" only) and can be used with plain roller bearings. Styles may differ depending on series.



Side Brake Steel Tread Brake (WBT)

Side Brake Steel Tread Brake is available on the 45 and 46 Series. May be used with swivel locks.



Welded T-Handle Brake (WTHB)

Welded T-handle Brake is available for use on the RWM S65 and S75 series. The T-handle is hand twisted to squeeze the hub of the wheel and prevent rotation.



Wrap-Around Wheel Brake (WWB)

This brake operates mechanically similar to the side wheel brake, but is operable from more locations. This brake fits 2" wide wheels only.