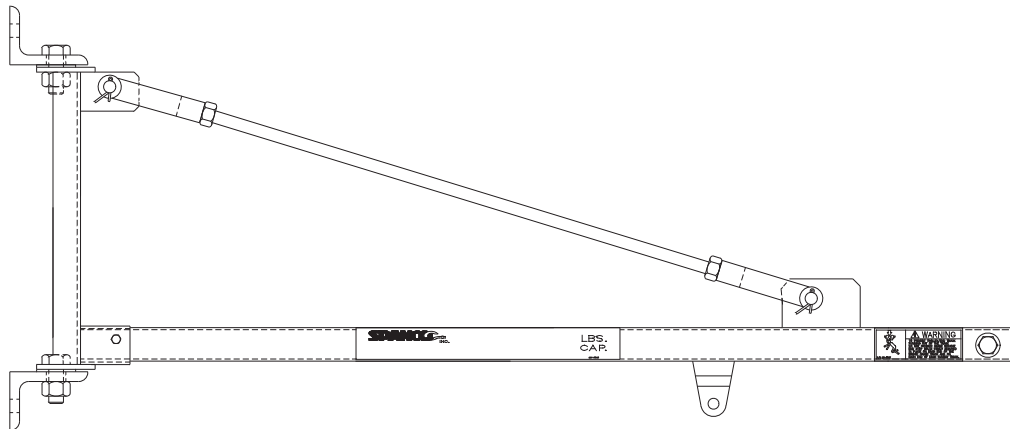




Installation and Maintenance Manual for SPANCO® (WJ) Wall Mounted Jib Cranes



FORWARD

This manual contains important information to help you install, operate, maintain, and service your new jib crane. We recommend that you study its contents thoroughly before putting the jib into use. We also recommend that you obtain the latest issue of *ANSI B30.11 Safety Standard for Monorails and Underhung Cranes* and study its contents thoroughly. By practicing the recommended maintenance suggestions, with proper installation, and application of correct operating procedures you will be assured maximum service from your jib crane.

The jibs described in this manual are intended for indoor service. Jib cranes used for outdoor service require special consideration.

Information contained in this manual is subject to change without notice.

Before attempting to install your new jib crane, the following items must be understood:

1. It is the customer's responsibility to ensure that building columns or walls are adequate to support the crane and its rated load.
2. Jib cranes should not be hung from any existing building structure without first consulting a qualified architect or engineer for the purpose of determining the structure's adequacy.



Do not mount the jib crane to any structure unless you are sure the structure can safely support the loads imposed upon the structure. Failure to check this item can result in severe bodily injury or death.

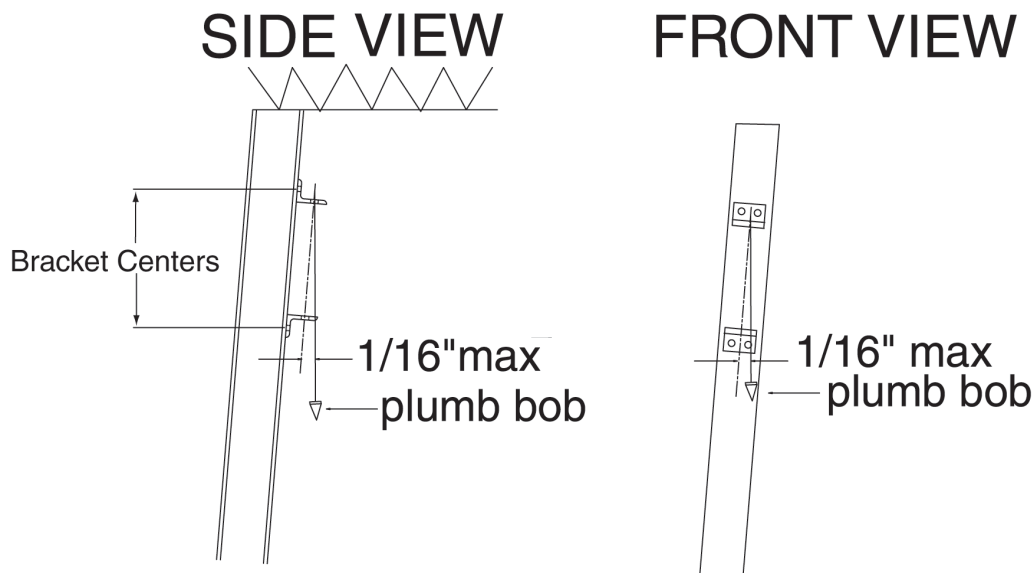
3. The installer is responsible for supplying the correct size, length, number, and type of bolts required to attach the jib crane brackets to the structure. SPANCO recommends that the bolts be ASTM A325 grade.
4. Plan the installation such that the proper clearance as outlined in ANSI B30.11 will be adhered to. In the design of jib crane systems, all factors that influence clearances, such as roof truss sag, and boom deflection should be considered. The model WJ jib crane deflection should not exceed 1/600 of the span at mid-span.

INSTALLATION:

1. Refer to **Table (1)** to locate the dimensions of the specific Model WJ jib crane to be installed.

TABLE (1)	Bracket Centers					
	Span					
Capacity (lbs)	4'	6'	8'	10'	12'	16'
100	24"	24"	24"	24"	24"	36"
150	24"	24"	24"	24"	24"	36"
250	24"	24"	24"	24"	24"	36"
500	-	24"	24"	42"	42"	54"

2. Determine the elevation of the top wall bracket holes by adding the "Bracket Centers" dimension to the desired elevation of the bottom of the boom plus 2 1/4".
3. Hold the top wall bracket against the supporting column in its proper location with a C-clamp or other supporting method.
4. Establish the correct distance from the top wall bracket to the bottom wall bracket, from Table 1. Hold the bottom wall bracket against the supporting column with a C-clamp or other supporting method.



5. Use a plumb bob to check the alignment of the bottom bracket with the top bracket in two planes. The alignment must be within 1/16 inches from top bolt hole center to bottom bolt hole center.

INSTALLATION (Continued):

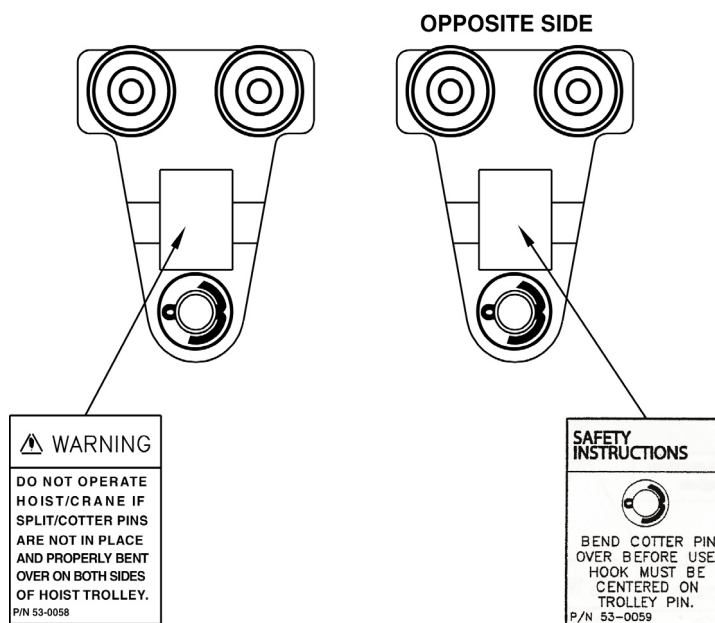
6. Using the wall brackets as a template, mark the established hole locations.
7. Drill the holes in the column for the wall brackets.
8. Mount the wall brackets and their shims (if used) to the column with bolts supplied by the installer. Care should be taken to ensure all bolts are properly tightened.
9. Assemble the boom and tie rod to the wall bracket weldment using necessary hardware.
10. Lift the boom assembly with its brackets and tie rod assembly attached with a lift truck or other means into their respective wall brackets. Insert the top and bottom pin bolts (3/4" x 2") along with flange bearings and washers into the wall bracket and back bracket assemblies and properly tighten the nuts.
11. Remove the end stop from the boom tip and install the trolley into the boom. Remember to reinstall the end stop on the boom and properly tighten the nuts.
12. Attach hoist supplied by others to hoist trolley. Use washers on hoist mounting pin to center hoist inside hoist trolley. Reinstall washer on outside of hoist trolley (both sides) before installing or reinstalling cotter pins to secure hoist mounting pin. Replace cotter pin(s) if worn or broken. Bend cotter pin around.



WARNING

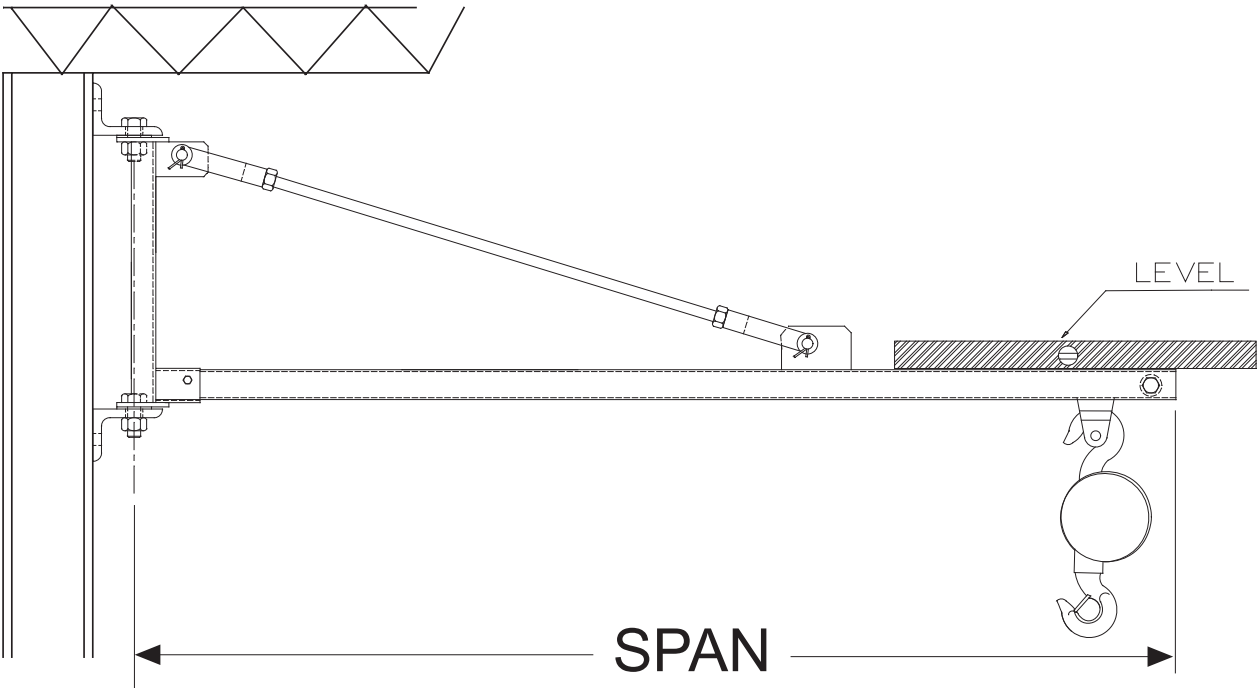
Do not operate hoist or crane if cotter pins are not in place and properly bent over on both sides of hoist trolley. Check regularly that the cotter pins are in place and securing the hoist on the hoist trolley.

NOTE: Some trolley load pins only have one cotter pin.



INSTALLATION (Continued):

13. Position the unloaded hoist and trolley at the extreme tip of the boom and adjust the tie rod assembly such that the boom is level.



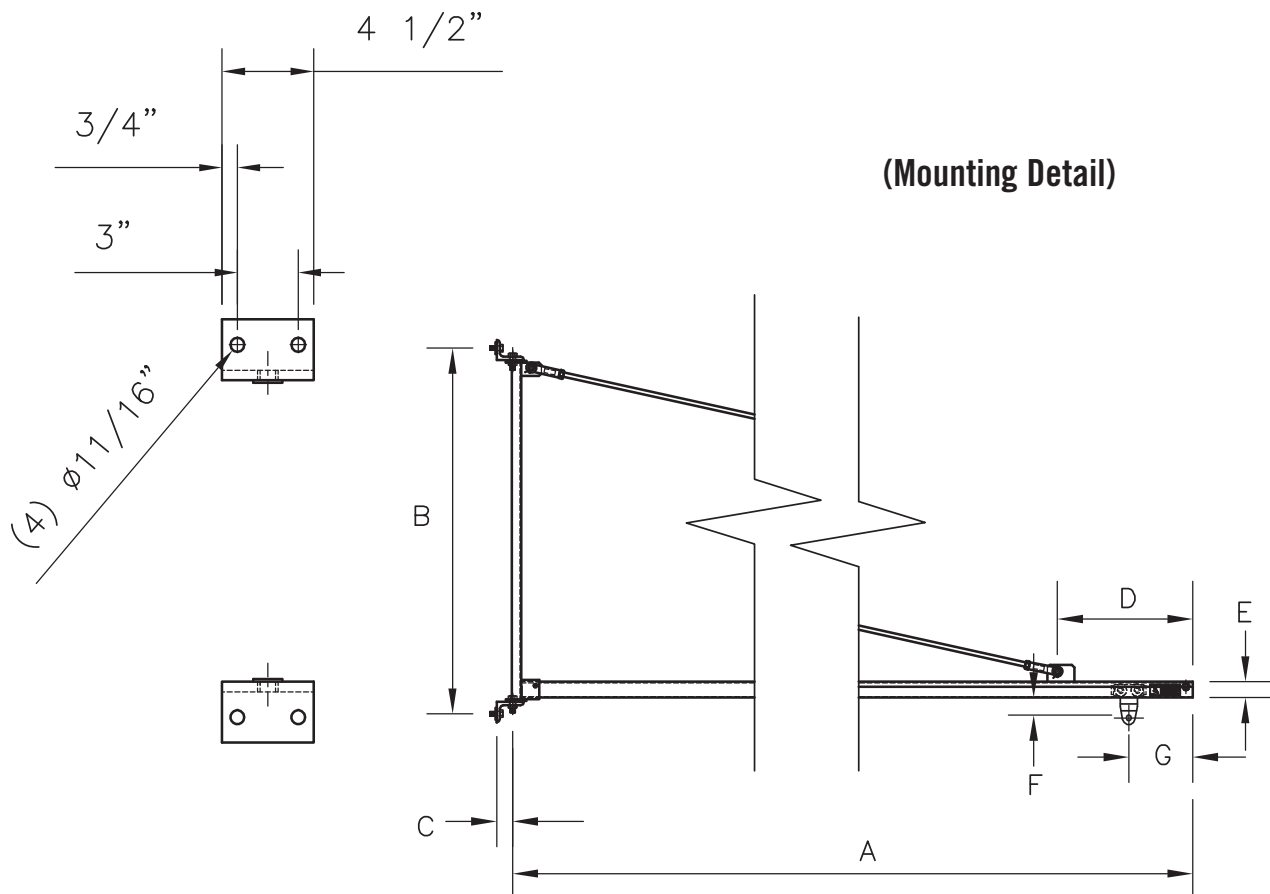
The rated load of the hoist as marked on the hoist must not exceed the rated capacity of the jib as labeled on the boom. Do not install a hoist with a capacity greater than that of the jib.

14. Connect the hoist to its source of power (either air or electric) if required, as per the hoist manufacturer's manual.
15. Now that the jib crane installation is complete, but before the unit is placed into service, it is important to review and to follow the procedures outlined in Chapter 11-2 of ANSI B30.11 regarding inspection, testing, and maintenance.

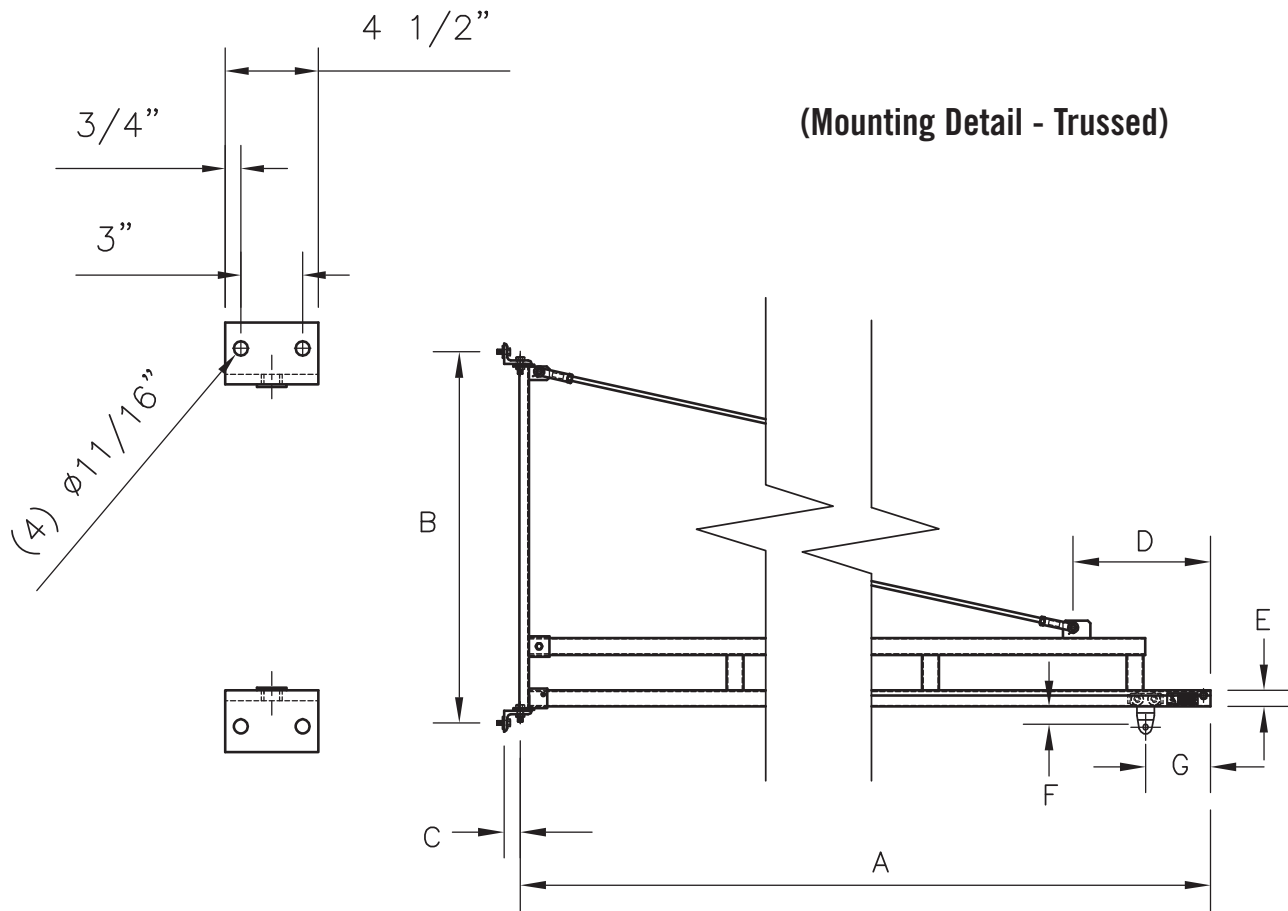
MAINTENANCE:

The hoist is not provided by SPANCO. The user should refer to the manual supplied for the hoist for a listing of maintenance points and their suggested frequency.

With regards to the SPANCO jib, the only maintenance item is that of wall bracket lubrication. The bearings in those brackets are pre-lubricated at the factory. Field lubrication of those bearings is required based upon usage of the crane. SPANCO recommends that the bearings be lubricated at least once a year. The grease should be lithium soap based grease, consistency No. NLGI 2.



MAINTENANCE (Continued):



IMPORTANT MAINTENANCE INFORMATION:

During the first month after a new installation, a weekly inspection of the system should be performed. All nuts, bolts and screws should be checked for tightness. All end stops, cotter pins, and hoist trolleys should be checked for abnormal wear or breakage.

Thereafter, a complete inspection of all fasteners and connections should be performed at least monthly. It is important to note that every jib application and use will be different, therefore some conditions of use should require more frequent inspection. Examples of such conditions might be two or three shift operations, high, repetitive, fast movement of the jib, or frequent crashing of the trolley into the end stops.

It is expected that every time an operator uses a SPANCO jib crane system, they visually inspect the jib before using it and note any unusual or abnormal operation. Meticulous, careful operation will help minimize system maintenance.



SPANCO, Inc.
604 Hemlock Road
Morgantown, PA, 19543

Toll Free: (800) 869-2080
Local: (610) 286-7200
Fax: (610) 286-0085

spanco.com

FIVE-YEAR EQUIPMENT WARRANTY

SPANCO offers this Equipment Warranty (the "Warranty") on the following equipment:

- Manually propelled Free Standing and Ceiling Mounted Workstation Bridge Cranes.
- Manually propelled Monorails.
- Manually propelled ALU-TRACK Bridge Cranes and Monorails.
- Manually rotated Enclosed Track and I-Beam Jib Cranes.
- Manually propelled Gantries.
- Manually propelled Articulating Jib Cranes.
- ALL motorized SPANCO products come with a one year warranty on drive components.

SPANCO warrants the Equipment and wearable end truck and trolley wheels only, to be free from defects in material and workmanship for a period of five (5) years or 10,000 hours (whichever occurs first), commencing on the date of shipment to the first retail purchaser ("Purchaser"). This Warranty does not extend to Equipment which has been subject to misuse, use in excess of rated capacity, negligent operation, use beyond SPANCO's published service factors, improper installation or maintenance, and does not apply to any Equipment which has been repaired or altered without SPANCO's written authorization. Written notice of any claimed defect must be given to SPANCO within thirty (30) days after such defect is discovered. SPANCO's obligation, and Purchaser's sole remedy under this Warranty is limited to, at SPANCO's discretion, the replacement or repair of the Equipment at SPANCO's factory or at a location approved by SPANCO. Purchaser is responsible for all freight and transportation costs relating to the repair or replacement of the Equipment. THE FOREGOING WARRANTY IS EXPRESSLY IN LIEU OF ALL OTHER WARRANTIES WHATSOEVER WHETHER EXPRESS, IMPLIED, OR STATUTORY. SELLER MAKES NO WARRANTY AS TO THE MERCHANTABILITY OR FITNESS FOR A PARTICULAR PURPOSE OF THE EQUIPMENT AND MAKES NO OTHER WARRANTY, EITHER EXPRESS OR IMPLIED. SPANCO shall not be liable, under any circumstances, for any indirect, special or consequential damages including, but not limited to, lost profits, increased operating costs or loss of production. This Warranty shall not extend to any components or accessories not manufactured by SPANCO (such as casters), and Purchaser's remedy for such components and accessories shall be determined by the terms and conditions of any warranty provided by the manufacturer of such components and accessories.

SERVICE POLICY

1. Obtain as much information as possible concerning the problem through personal observation by yourself or other authorized personnel familiar with the job and equipment: include model, serial and/or part numbers, voltages, speeds and any other special identifying features. Be prepared to discuss the situation in detail.
2. All authorized labor charges will be based on straight time. Hourly rates, estimated man hours, and not to exceed total dollar amount required for corrections are to be agreed upon before authorization is given. There will be no allowances for overtime except in dire emergencies and then only with prior approval.
3. A verbal agreement may be reached immediately on both the method of correction and the approximate cost. A warranty authorization number will be assigned for the specific incident. A confirming written authorization will be forwarded to the distributor.
4. The distributor must send an itemized invoice, showing our release number or invoice number and warranty authorization number after authorized corrections have been made. A credit memo will be issued by accounting after the invoice has been received and approved. Warranty charges ARE NOT to be deducted from outstanding open account invoices under any circumstances.
5. Any field corrections made prior to an authorization by SPANCO will not be accepted as a warranty charge or the responsibility of SPANCO. Any modification to the equipment made without the prior approval of the seller will void all warranties. A verbal authorization for modification may be obtained, in which event a warranty authorization number will be assigned for the specific modification. A confirming written authorization will be forwarded to the distributor.

This warranty and service policy will be incorporated as a permanent section of the current price book as issued by SPANCO.