

# RIVETWELL BY HALLOWELL

## RECEIVING INSTRUCTIONS

1. CHECK THE NUMBER OF PACKAGES (PARTS) RECEIVED AGAINST THE BILL OF LADING. IF ANY SHORTAGES, SECURE A "SHORTAGE NOTATION" FROM THE CARRIER AND FILE A CLAIM. CHECK MATERIAL FOR DAMAGE. IF ANY IS DAMAGED, SECURE A "DAMAGE NOTATION" FROM THE CARRIER AND FILE A CLAIM AGAINST CARRIER.
2. CHECK MATERIAL RECEIVED AGAINST YOUR "COPY OR ORDER".
3. WHEN UNPACKING, ARRANGE LIKE PARTS TOGETHER AND AS CLOSE AS POSSIBLE TO WORKING AREA IN WHICH THEY ARE TO BE ASSEMBLED.
4. TOOLS REQUIRED ARE A RUBBER Mallet AND A SCREW DRIVER WHEN USING CENTER SUPPORTS.
5. FAMILIARIZE YOURSELF WITH ALL COMPONENT PARTS.
6. SAVE THIS DOCUMENT FOR FUTURE REFERENCE.

## ASSEMBLY INSTRUCTIONS

1. START BY PUTTING SIDE FRAME ASSEMBLIES TOGETHER BY INSERTING FRONT TO BACK BEAMS (PART ABS/ABH) INTO POST.
2. ONCE BOTH SIDE FRAME ASSEMBLIES ARE MADE, TAKE ONE SIDE FRAME ASSEMBLY AND INSERT ONE LEFT TO RIGHT ANGLE BEAM (ABS/ABH) INTO THE BOTTOM OF FRONT POST AND ONE LEFT TO RIGHT BEAM INTO THE BOTTOM OF THE REAR POST. THIS WILL MAKE THE FRAME STAND UP BY ITSELF. NOW INSERT THE OPPOSITE END OF THE SAME LEFT TO RIGHT BEAMS (ABS/ABH) INTO THE OTHER FRAME ASSEMBLY.
3. NOW WITH THE UNIT STANDING, INSERT ADDITIONAL SHELVES REQUIRED TO COMPLETE UNIT.
4. ASSEMBLE CENTER SUPPORTS (IF REQUIRED) TO ANGLE BEAMS AND/OR CHANNEL BEAMS USING (4) 1/4-20 x 1/2 BOLTS AND HEX NUTS PER SUPPORT.
5. ASSEMBLE ARCHIVES BOX SUPPORTS (IF REQUIRED) TO BEAMS USING TWO (2) PLASTIC BUTTONS PER SUPPORT.
6. ASSEMBLE FOOT PLATE (IF REQUIRED) TO POST USING ONE (1) OR TWO (2) (AS REQUIRED) TEK SCREWS. ANCHOR TO FLOOR (ANCHORS NOT SUPPLIED BY HALLOWELL)
7. ATTACH TIE PLATES (IF REQUIRED) BY INSERTING RIVETS IN POST AND TAP DOWN TO SEAT.
8. ASSEMBLE ROW SPACERS AND TOP TIES (IF REQUIRED) BY INSERTING RIVETS INTO THE FACE OF THE POSTS OPPOSITE EACH OTHER AND TAP TO SEAT.
9. ASSEMBLE WALL TIES (AS REQUIRED) INTO THE FACE OF THE POST AND ANCHOR THE OPPOSITE END TO THE WALL.
10. ASSEMBLE POST SPLICE TO BOTTOM AND TOP ANGLE POST USING EIGHT (8) BOLT AND EIGHT (8) NUTS. WHEN USING "T" POST USE TWO (2) POST SPLICES AND ATTACH TO BOTTOM AND TOP POST USING TWELVE (12) BOLT AND TWELVE (12) NUTS.

## NOTES

1. WHEN INSERTING BEAMS INTO SLOTS ON POST, BEAMS MUST BE SEATED INTO BOTTOM OF SLOTS WITH A RUBBER Mallet.
2. BEAMS CANNOT BE PLACED IN THE LEVEL OCCUPIED BY A SPLICE PLATE.
3. CHANNEL BEAM CANNOT BE PLACED DIRECTLY AT FLOOR LEVEL. IF BEAM IS REQUIRED AT FLOOR LEVEL, USE A HEAVY ANGLE BEAM WITH REQUIRED CENTER SUPPORTS.

## WARNING

RIVETWELL UNITS ARE INTENDED FOR USE IN HAND-LOADED APPLICATIONS ONLY.  
POWERED MATERIAL HANDLING EQUIPMENT SHOULD NEVER BE USED AROUND RIVETWELL UNITS WITHOUT HALLOWELL APPROVAL.



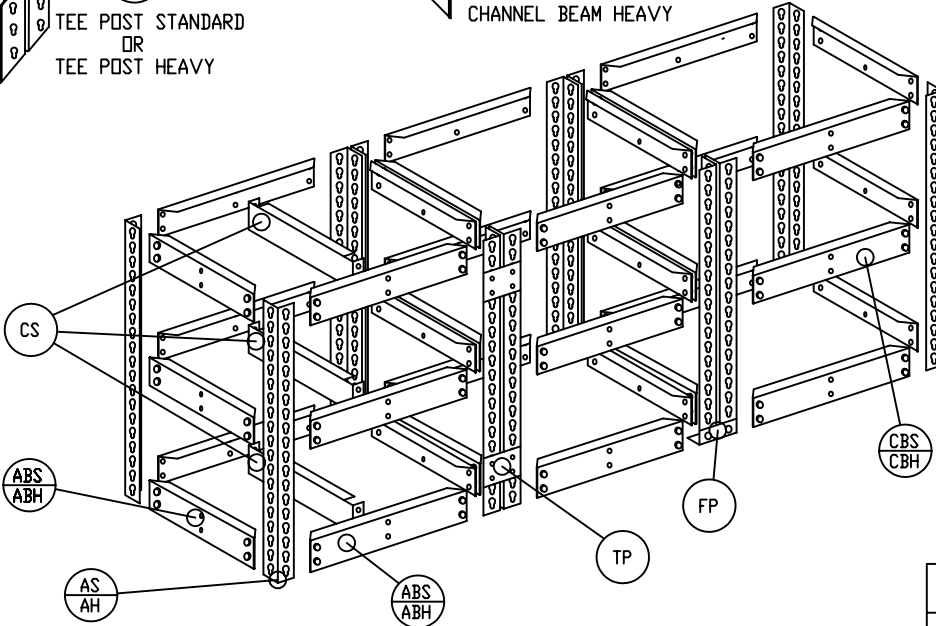
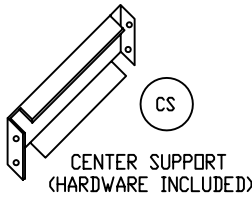
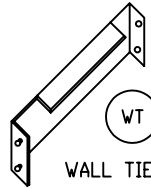
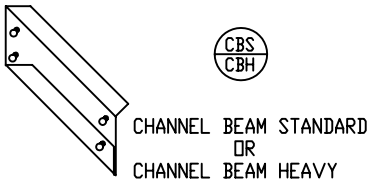
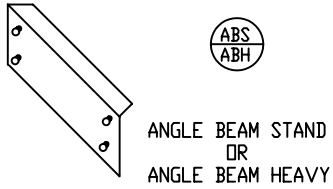
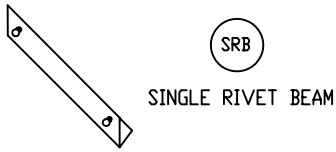
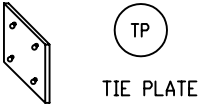
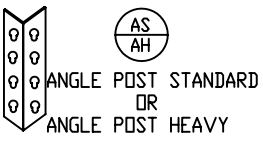
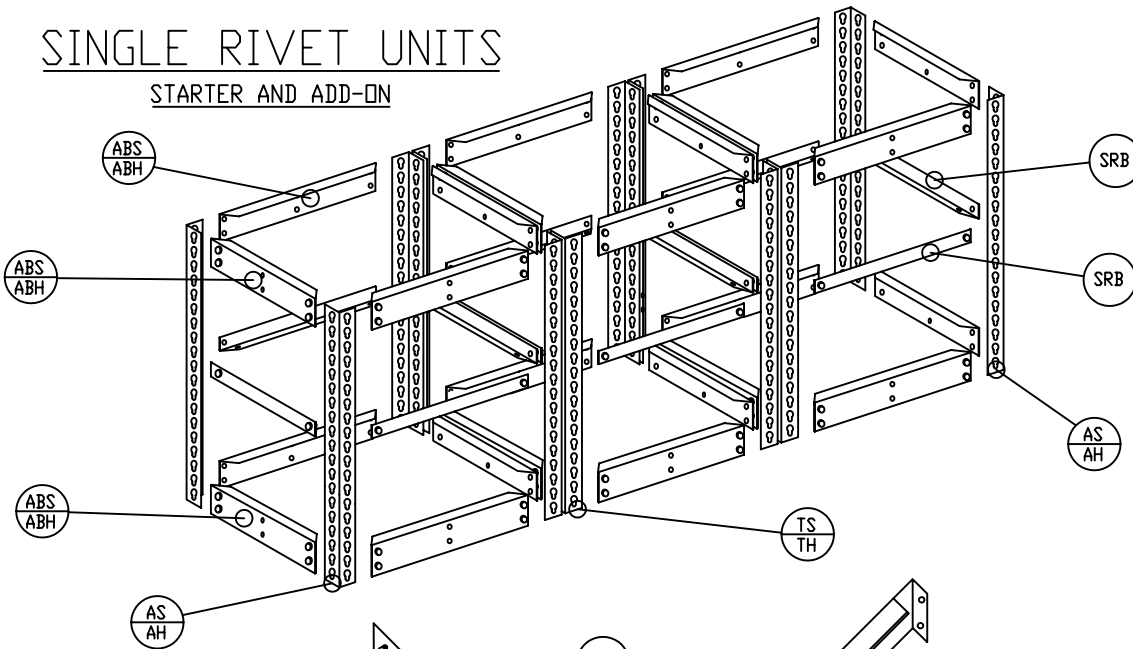
401 Jim Moran Boulevard / P.O. Box 9601  
Deerfield Beach, Florida 33442

(954) 429-9155  
Fax (954) 428-3843

REVISIONS			RIVETWELL ASSEMBLY INSTRUCTIONS		
NO.	DATE	BY			
1	02-21-02	JMH	TEB	08-27-99	
			CHK'D	DATE	DRWG NO. SB1153-1
			APP'D	DATE	SHEET 1 OF 2

# SINGLE RIVET UNITS

STARTER AND ADD-ON



# DOUBLE RIVET UNITS

STARTER AND ADD-ON



REVISIONS			ASSEMBLY INSTRUCTIONS		
NO.	DATE	BY			
1	02-21-02	JMH			
			DRAWN BY TEB	DATE 08-27-99	SCALE
			CHK'D	DATE	DRWG NO. SB1153-2
			APP'D	DATE	SHEET 2 OF 2