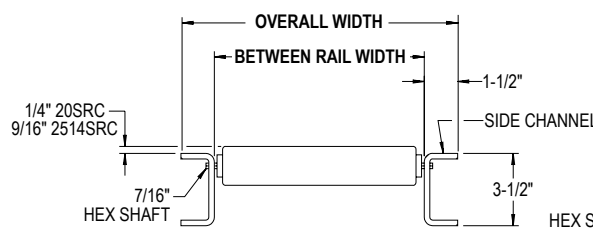
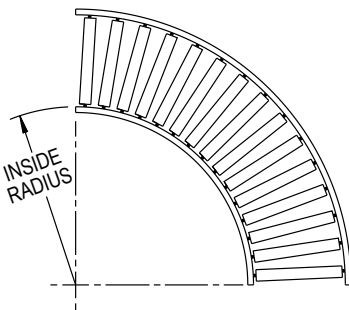


# ROLLER

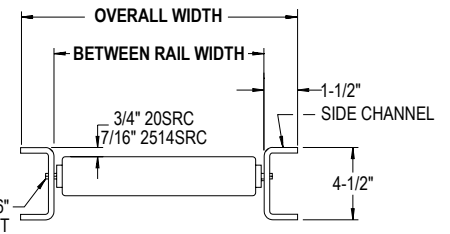
Gravity Roller Curve Conveyor  
(2 in. Dia. x 12 Ga. Rollers)  
(2 ½ in. Dia. x 14 Ga. Rollers)



STRAIGHT ROLLER CURVES										
Over All Width	Between Rail Width	Inside Radius	Model No. 2.0 x 12 GA Unplated	90° Weight	Model No. 2.0 x 12 GA Unplated	60° Weight	Model No. 2.0 x 12 GA Unplated	45° Weight	Model No. 2.0 x 12 GA Unplated	30° Weight
16" 18" 20" 22" 24"	13" 15" 17" 19" 21"	32 ½"	20SRC-13-90S	97	20SRC-13-60S	73	20SRC-13-45S	50	20SRC-13-30S	32
			20SRC-15-90S	105	20SRC-15-60S	79	20SRC-15-45S	53	20SRC-15-30S	35
			20SRC-17-90S	114	20SRC-17-60S	86	20SRC-17-45S	58	20SRC-17-30S	38
			20SRC-19-90S	122	20SRC-19-60S	92	20SRC-19-45S	63	20SRC-19-30S	40
			20SRC-21-90S	131	20SRC-21-60S	98	20SRC-21-45S	67	20SRC-21-30S	43
			20SRC-23-90D	161	20SRC-23-60D	121	20SRC-23-45D	82	20SRC-23-30D	53
26" 28" 30"	23" 25" 27"	32 ½"	20SRC-25-90D	169	20SRC-25-60D	127	20SRC-25-45D	85	20SRC-25-30D	56
			20SRC-27-90D	177	20SRC-27-60D	135	20SRC-27-45D	89	20SRC-27-30D	58
			20SRC-31-90D	211	20SRC-31-60D	159	20SRC-31-45D	108	20SRC-31-30D	70
34" 36" 40" 42"	31"* 33"* 37"* 39"*	48"	20SRC-33-90D	220	20SRC-33-60D	165	20SRC-33-45D	112	20SRC-33-30D	73
			20SRC-37-90D	238	20SRC-37-60D	179	20SRC-37-45D	120	20SRC-37-30D	79
			20SRC-39-90D	247	20SRC-39-60D	186	20SRC-39-45D	124	20SRC-39-30D	82



SET HIGH



SET LOW

## • STANDARD SPECIFICATIONS

**WIDTHS**—Between Rail Width 13 in., 15 in., 17 in., 19 in., 21 in., 23 in., 25 in., 27 in., 31 in., 33 in., 37 in., and 39 in.

**FRAME**—3 ½ in. or 4 ½ in. deep x 1 ½ in. flange x 10 ga. powder painted formed steel channel with bolt-in cross members.

**BUTT COUPLINGS**—Bolt-on type for bolting sections together.

**CURVES**—30°, 45°, 60° and 90° with 32 ½ in. inside radius for widths up to 27 in., 48 in. inside radius for 31 in. to 39 in. between rail widths.

**ROLLERS**—(Straight) "20-SRC" 2 in. dia. x 12 ga. unplated steel tubing. Rolled over ends provide a firm bearing seat and rounded ends. Bearings are labyrinth sealed and grease packed.

**AXLES**—7/16 in. hex shaft, spring loaded.

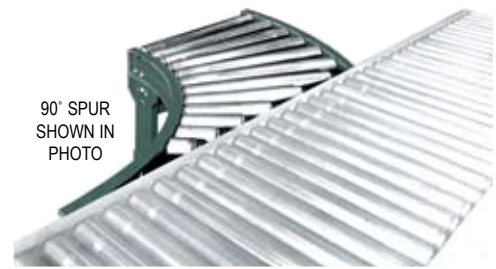
**CAPACITY**—Same per foot capacity as straight sections. See charts previous page.

# ROLLER

## Gravity Roller Spur Conveyor (2.0 in. Dia. x 12 Ga. Rollers) (2 ½ in. Dia. x 14 Ga. Rollers)

Gravity Roller Spurs are used to transfer products from one conveying line to another. They can be used in merging or diverging applications. Ideally used where numerous lines must transfer onto a main conveyor line.

- 12 Widths
- 30°, 45°, & 90° Spurs Available
- Right or Left Hand Units

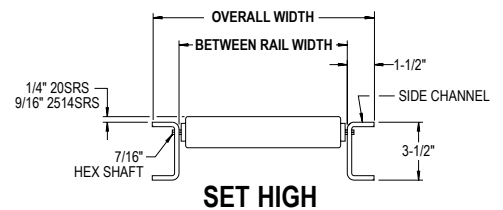
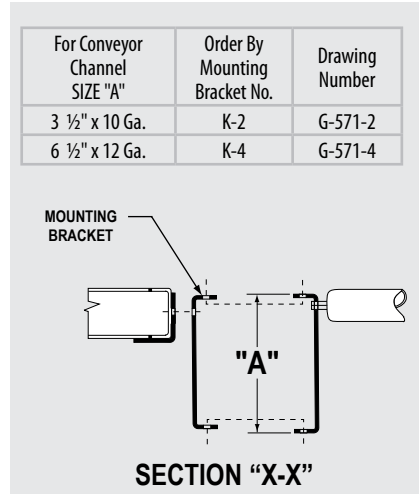
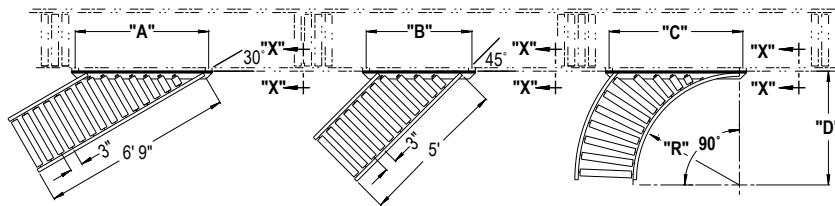
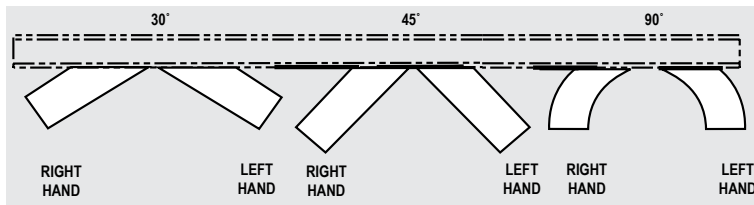


90° SPUR  
SHOWN IN  
PHOTO

Over All Width	Between Rail Widths	90° SPUR						30° SPUR						45° SPUR					
		Model No. (Unplated) 2.0" Roller	"C"	"D"	Inside Radius	WEIGHTS (lbs.)		Over All Width	Between Rail Width	Model No. (Unplated) 2.0" Roller	"A"	WEIGHTS (Lbs.)		Model No. (Unplated) 2.0" Roller	"B"	WEIGHTS (Lbs.)			
						2.0" Roller	2 ½" Roller					2.0" Roller	2 ½" Roller			2.0" Roller	2 ½" Roller		
16"	13"	20SRS-13-90	42"	33"	32 ½"	92	285	16"	13"	20SRS-13-30	36"	113	331	20SRS-13-45	27"	88	317		
18"	15"	20SRS-15-90	42"			100	299	18"	15"	20SRS-15-30	39"	121	349	20SRS-15-45	30"	96	327		
20"	17"	20SRS-17-90	48"			109	310	20"	17"	20SRS-17-30	45"	128	363	20SRS-17-45	33"	102	345		
22"	19"	20SRS-19-90	48"			117	324	22"	19"	20SRS-19-30	48"	135	374	20SRS-19-45	36"	109	359		
24"	21"	20SRS-21-90	48"			126	335	24"	21"	20SRS-21-30	51"	137	390	20SRS-21-45	39"	114	370		
26"	23"	20SRS-23-90	54"			156	433	26"	23"	20SRS-23-30	54"	143	396	20SRS-23-45	42"	119	385		
28"	25"	20SRS-25-90	54"			164	443	28"	25"	20SRS-25-30	60"	150	415	20SRS-25-45	45"	127	393		
30"	27"	20SRS-27-90	54"			172	457	30"	27"	20SRS-27-30	63"	156	433	20SRS-27-45	48"	132	415		
34"	31"	20SRS-31-90	68"			206	538	34"	31"	20SRS-31-30	72"	159	457	20SRS-31-45	54"	136	438		
36"	33"	20SRS-33-90	78"			48 ½"	48"	215	549	36"	33"	20SRS-33-30	75"	162	465	20SRS-33-45	57"	140	447
40"	37"	20SRS-37-90	78"	233	574			40"	37"	20SRS-37-30	84"	169	490	20SRS-37-45	63"	148	474		
42"	39"	20SRS-39-90	78"	242	586			42"	39"	20SRS-39-30	87"	172	508	20SRS-39-45	66"	151	486		

All weights in catalog are conveyor weights only. Accessories, crating, etc., are not included.

**NOTE:** When Between Rail Widths exceed 21", double rollers are supplied standard on 90° spurs.



## • STANDARD SPECIFICATIONS

**WIDTHS**—Between Rail Width 13 in., 15 in., 17 in., 19 in., 21 in., 23 in., 25 in., 27 in., 31 in., 33 in., 37 in., and 39 in.

**FRAMES**—3 ½ in. deep x 1 ½ in. flange x 10 ga. powder painted formed steel channel with bolt-in cross members on 30° & 45° spurs, welded cross members on 90° spurs.

**BUTT COUPLINGS**—Bolt-on type for bolting sections together.

**SPUR ANGLE**—30°, 45°, & 90° right or left hand applications, specify.

**ROLLERS**—"20-SRS" 2.0 in. dia. x 12 ga. unplated steel tubing. Bearings are labyrinth sealed and grease packed.

**AXLES**—7/16 in. hex shaft, spring loaded.

**MOUNTING BRACKET**—Bracket is supplied to attach spur to side channels of other conveyors, specify.

**CAPACITY**—Same per foot capacity as straight sections. See Gravity Roller Conveyor (2 & 2 ½ in. x 12 & 14 ga.) charts.