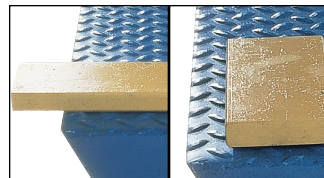
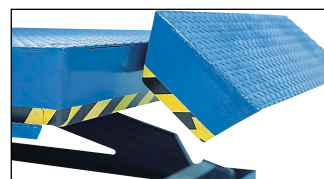


Electric Toe Guards



Night Locks



Wheel Chock



Controls



Limit Switch

Options

Electric Toe Guards (safety device to stop platform downward travel).

Night Locks (secure platform at dock level).

Limit Switch (stops lift upward travel at preset level).

Special Controls.

Non Toxic, Fire Retardent, Biodegradable Hydraulic Fluid.

Custom Bridge Sizes.

Single Phase Power Unit (230v).



Advance Lifts Parts & Labor Warranty

For a period of ONE YEAR from date of shipment from Company's plant, the Company agrees to replace or repair, free of charge, any defective parts, material or workmanship on new equipment. This shall include electrical and hydraulic components.

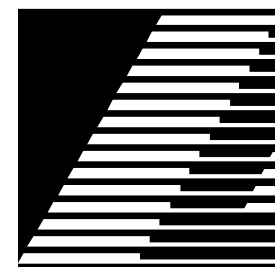
For a period of TEN YEARS or 125,000 cycles (whichever occurs first) from date of shipment from Company's plant, the Company agrees to replace or repair, free of charge, any defective structure.

Company authorization must be obtained prior to the commencement of any work. The Company reserves the right of choice between effecting repairs in the field or paying all freight charges and effecting the repairs at the Company's plant. The Company further reserves the right of final determination in all warranty considerations. Evidence of overloading, abuse or field modification of units without Company approval shall void this warranty. No contingent liabilities accepted.



701 Kirk Road, St. Charles, IL 60174
1-800-843-3625
fax 630-584-9405
www.advancelifts.com

DISTRIBUTED BY:



ADVANCE LIFTS

T2000 SERIES DOCK LIFT



Maximum
VALUE through
Superior
SERVICE



A. Model Number	B. Lifting Capacity (Lbs.)	C. Axle Capacity Ends (Lbs.)	D. Axle Capacity Sides (Lbs.)	E. Platform Size (Ft.)	F. Lowered Height (In.)	G. Shipping Weight (Lbs.)
T-50608	5000	2500	2500	6 x 8	8	2400
T-60608	6000	3000	3000	6 x 8	8	2500
T-55609	5500	2700	3000	6 x 9	8	2780
T-55610	5500	2500	3000	6 x 10	8	2860
T-55708	5500	2700	2700	7 x 8	8	2805
T-55709	5500	2700	2700	7 x 9	8	2900
T-50710	5000	2500	2500	7 x 10	8	2990
T-50808	5000	2500	2500	8 x 8	8	2915
T-50809	5000	2500	2500	8 x 9	8	3015
T-50810	5000	2500	2500	8 x 10	8	3100

Usage

The T2000 Series is designed to be used with loads transferred via hand trucks, four wheeled carts, manual pallet jacks and small powered pallet jacks.

Every dock needs a lift because it is the only equipment that can service all trucks. Where there is no raised concrete dock, a dock lift acts as the dock and services all truck traffic. Where there is a concrete dock, the dock lift services all the irregular traffic that falls outside the limited working range of dock levelers, such as pick-up trucks, panel trucks, step vans, city delivery trucks and super vans.

Typical users are manufacturing plants, warehouse distribution facilities, retail stores, postal facilities, schools, hospitals, office buildings, hotels, banks, air cargo terminals and any other facility that must service a wide variety of truck traffic. Every shipping/receiving area should have at least one dock lift for added safety and versatility and to ensure that all vehicles can be serviced.

T2000 Series Features

MECHANICAL

- 1-year parts and labor warranty plus a 10 year structural warranty—provides added value—protects your investment.
- 8" bevel toe guards with 2" black and yellow safety marking—conforms to MH29.1— means added safety.
- 12"x72" hinged bridge with safety lifting chain—bridges between truck and platform—speeds loading and unloading.
- Oven baked on enamel finish—protects against rust—insures longer life.
- Safety tread steel deck/Removable hand rails/Semi-trailer rollover capacity/Chrome plated axles, pins and cylinder rods/Lifetime lubricated bearings/Removable safety maintenance leg.

ELECTRICAL

- 24-volt control circuit with 4 amp fused secondary—protects lift operator—means added safety.
- UL Approved prewired oil and dust tight controller—protects personnel, components and reduces installation costs—insures long life and saves you money.
- No electric limit switch required in pit—eliminates need for electrical lines in pit—means added safety and lower installation costs.
- Continuous duty motor/NEMA 4 weatherproof push button control/20 ft. coil type control cord.

HYDRAULIC

- Internal mechanical stops within the cylinders—prevents lift from collapsing when fully raised—means added safety.
- Piston type cylinders—seal on the protected inside wall of the cylinder housing rather than on the exposed cylinder rod—sealing surface not exposed to potential external damage.
- 3 in-line hydraulic filters—protect against contamination—insures longer life.
- Power unit components mounted on top of oil reservoir—makes inspection and maintenance easier—reduces maintenance cost.

OTHER

- Conformance to ANSI MH29.1, OSHA, BOCA and NEC.
- A detailed owners manual covering all aspects of the lift.
- Authorized factory service centers throughout the country.



Architectural Specifications - (See Chart)

SCOPE: This specification covers model number **(A)** as manufactured by Advance Lifts, Inc. of St. Charles, IL.

CAPACITY: The unit shall have a lifting capacity of **(B)** lbs. with an axle loading capacity of **(C)** lbs. over the ends and **(D)** lbs. over the sides and be capable of sustaining semi trailer rollover traffic when fully lowered.

PLATFORM: The platform size shall be **(E)** with a safety tread steel deck and minimum 8 in. reinforced solid steel plate bevel toe guards which are flush with the outer edge of the deck in conformance with ANSI MH29.1. The toe guard shall have 2" black and yellow safety marking around its perimeter.

TRAVEL: From an 8 in. lowered height, the lift shall raise 58 in. vertically.

CYLINDERS: The lift shall be equipped with 2 heavy duty piston type cylinders, which seal on the protected inside cylinder housing wall. The cylinders shall have chrome plated rods and positive internal mechanical stops within the cylinder housing to prevent the lift from collapsing when fully raised.

BEARINGS AND AXLES: Leg assembly roller wheels and pivot points shall be equipped with lifetime lubricated bearings that never need to be greased or oiled. Pins and axles shall be hard chrome plated and easily removable for servicing.

POWER UNIT: The electric hydraulic power unit shall be self contained and located where convenient. It shall consist of a 5 HP-

230V/60HZ/3PH continuous duty motor, high pressure pump and valving, all mounted on top of the oil reservoir for ease of servicing. The overall dimensions shall be approximately 26"x12"x15" high.

SPEED: The lift shall raise and lower at a speed of approximately 10 fpm.

ELECTRIC CONTROLS: The lift shall be supplied with a NEMA 4 weatherproof, constant pressure push button station and 20 ft. of coil type cord. The controller shall consist of a magnetic motor starter with 3 pole adjustable overloads and a 24 volt control transformer with a 4 amp fused secondary, all prewired in a NEMA 12 oil and dust tight industrial enclosure. All controls and components shall be UL approved and the complete prewired controller assembly shall carry a separate UL approved label.

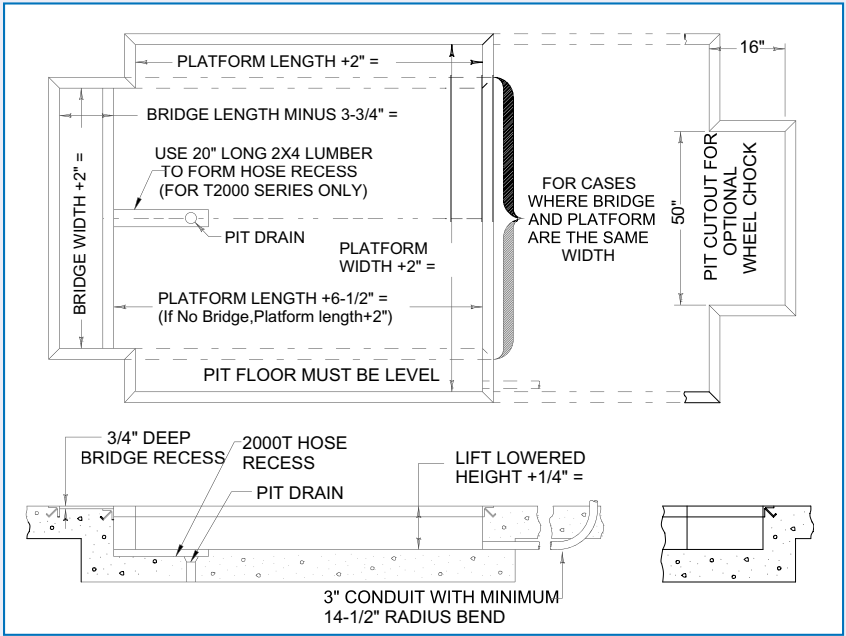
THROW OVER BRIDGE: One end of the platform shall be equipped with a 12 in. x 72 in. heavy duty welded steel hinged throw over bridge with a safety lifting chain.

HANDRAILS: The lift shall have removable handrails on 2 sides of the platform with a safety chain across both ends per OSHA requirements.

SAFETY: The lift shall conform to ANSI MH29.1, OSHA, BOCA and the National Electrical Code and be provided with a removable safety maintenance leg.

WARRANTY AND FINISH: The lift shall carry a 1 year parts and labor warranty plus a 10 year structural warranty. The lift shall have an oven baked-on enamel finish.

Pit Diagram



Bill of Materials:

1. One (1) Advance Model Number **(A)**.
2. 3"x 3"x 1/4" curb angle as required.
3. One (1) 3" conduit from power unit location to pit for hydraulic hose.
4. One (1) electric disconnect switch for 5 HP motor.
5. 5 gallons Dexron III ATF hydraulic fluid for the oil reservoir.
6. One (1) 1/2" SAE 100R2 hydraulic pressure hose from the power unit location to the lift base—1/2" Female JIC threads on both ends.
7. Concrete anchor bolts and material for shimming and/or grouting.

(Seller furnishes Advance dock lifts only unless otherwise agreed to in writing.)

Notes:

- A. Reinforce concrete to suit local soil conditions.
- B. All pit work and materials shown are the responsibility of the owner or his agent (by pit contractor).
- C. Installer to run 1/2" diameter hose through the 3" conduit from the power unit to the lift base.
- D. Dimension tolerances are plus 1/4" minus 0" (+1/4" -0).
- E. 180 degree steel hinge bridges require a bridge recess length equal to bridges length minus 2-3/4".
- F. 180 degree aluminum hinge bridges require a bridge recess length equal to bridge length minus 3-3/4" and a pit length equal to platform length plus 7-1/2".
- G. Consult factory for bridges longer than 30".