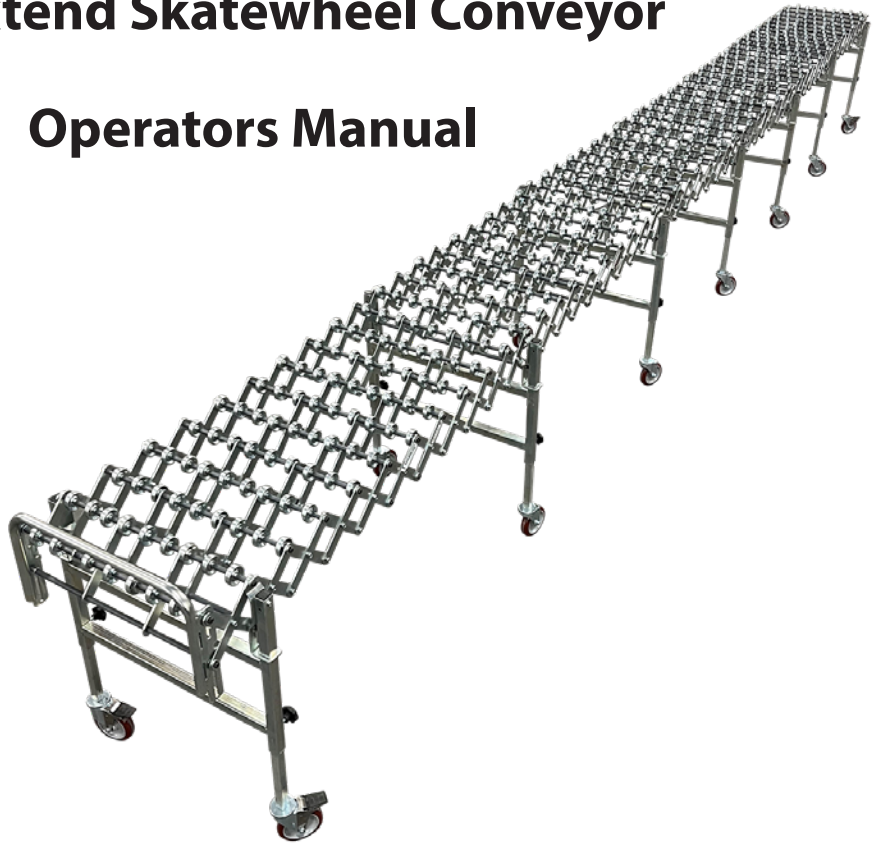




FlexExtend Skatewheel Conveyor

Operators Manual



Model Purchased Information

- | | | | | |
|-----------------|--|---------------------------------|---|------------------------------|
| Width | <input type="checkbox"/> 18" | <input type="checkbox"/> 24" | <input type="checkbox"/> 30" | <input type="checkbox"/> 36" |
| Wheel | <input type="checkbox"/> Black Polymer | | <input type="checkbox"/> Galvanized Steel | |
| Extended Length | <input type="checkbox"/> 8' 10" | <input type="checkbox"/> 28' 6" | <input type="checkbox"/> 48' 2" | |
| | <input type="checkbox"/> 12' 9" | <input type="checkbox"/> 32' 5" | <input type="checkbox"/> 52' 1" | |
| | <input type="checkbox"/> 16' 8" | <input type="checkbox"/> 36' 4" | <input type="checkbox"/> 56' 1" | |
| | <input type="checkbox"/> 20' 7" | <input type="checkbox"/> 40' 4" | <input type="checkbox"/> 60' 0" | |
| | <input type="checkbox"/> 24' 7" | <input type="checkbox"/> 44' 3" | | |

Contents

Warning Labels.....	3
Receiving & Uncrating	3
Assembly	4
Operational Information.....	6
Modifying Slope.....	7
Maintenance Instructions	9
Replacement Parts	9

Warranty Statement

ACP will replace parts that are damaged during the course of normal operation due to mechanical defect, excluding normal wear and tear and damage due to storing conveyors exposed to the outside elements or use of the equipment other than as specified by ACP. The warranty extends for a period of two years on all mechanical components from the date of shipment.

This warranty does not cover damage due to accident, misuse, abuse and negligence. It also does not cover damage due to improper operation or maintenance, or attempted modification.

Safety

Operators shall receive training by the employer on proper equipment operation of this conveyor.

- Do not exceed the conveyor load capacity, as it may result in possible operator injury or conveyor damage.
- Broken or worn parts must be replaced immediately to ensure the conveyor system remains in a safe, proper working condition.
- To extend or contract a conveyor, unlock all locking casters and use the handle on end carton stop.
- To move a conveyor to a new location, unlock all locking casters and use the handle on the end carton stop.
- Lock all locking casters to prevent motion during use once conveyor has been positioned in the desired location.

Warning Labels

In an effort to reduce injury, warning labels have been placed at various locations on the conveyor. Please check for and note all labels. Make sure personnel are alerted to and follow warning labels.

Placed along the side of the conveyor alerting personnel to pinch points at all linkages when collapsing the FlexExtend.

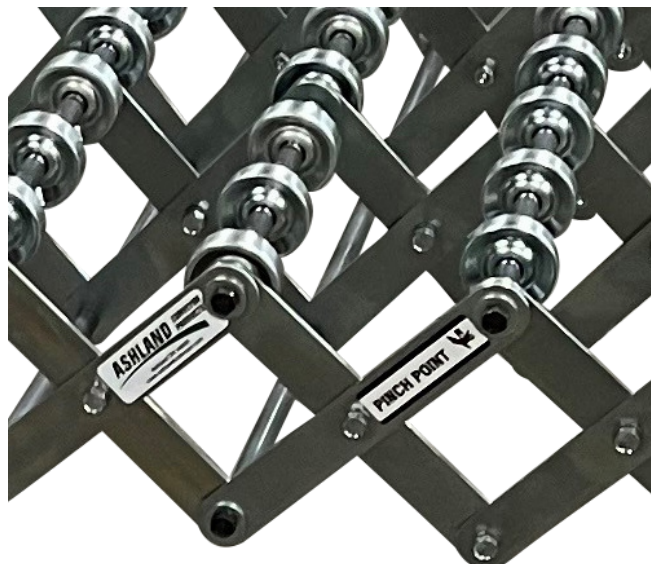


Figure 1 - Pinch Points of Side Linkage When Collapsing the FlexExtend

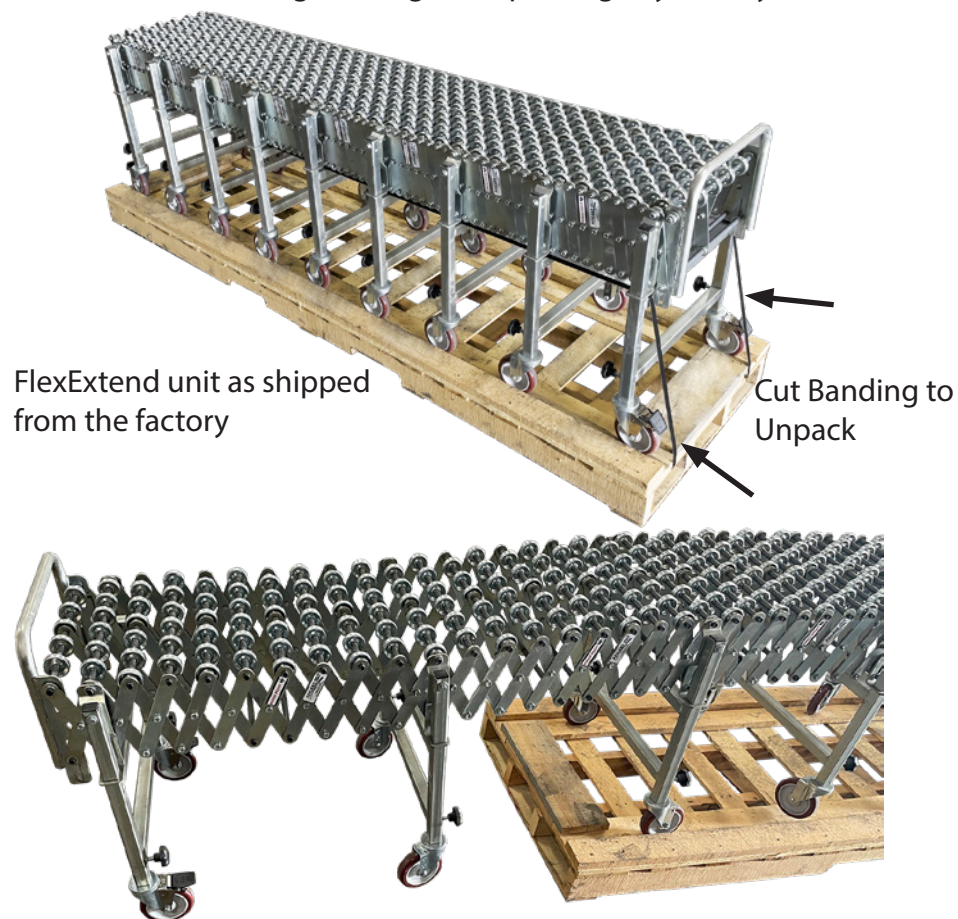
Warnings

- Do not place fingers or hands between rows of skate wheels or between side links that create the scissor action on the sides of the conveyor.
- Always use a dock plate when moving this conveyor into and out of the trailer. Always push/pull the conveyor onto the dock plate from the front; never from the sides.
- Always use genuine ACP parts. Use of non-ACP parts may void the product warranty.
- Frequently clean the conveyor to prevent accumulation of debris which may cause malfunctions or poor performance.
- Never operate this conveyor without all of its components and safety mechanisms.

Receiving & Uncrating

Examine condition of equipment to determine if any damage occurred during shipment or any parts are missing. Notify the carrier immediately concerning damaged or missing parts. The skid is specially designed for the product, therefore; the product should arrive (as shown below) fully assembled in an upright position.

CAUTION: Conveyor weights vary upon configuration, but all assemblies are heavy enough to cause injury. Use care when handling, moving, or unpacking any conveyor.



FlexExtend unit as shipped
from the factory

Cut Banding to
Unpack

WARNING: DAMAGE CAN OCCUR WHEN MOVING THE UNIT WITH A FORKLIFT

Once the banding is cut and removed the skid/pallet is designed to allow the FlexExtend to be rolled off by one or two people. Release all locking casters by lifting the brake levers upward and carefully roll the conveyor off the skid/pallet.

CAUTION: When moving the conveyor, release all locking casters and grip the conveyor by the handle on the end carton stop. Keep hands and fingers well clear of any pinch points.

Height Adjustment

The FlexExtend ships fully assembled. The unit arrives with the height (top of wheel) at the lowest position. In most applications a slope of 3" per 10' is sufficient but some applications may require more or less slope.

The conveyor can be adjusted from a minimum top of wheel of 28" to a maximum of 43". Best performance will be achieved by adjusting the conveyor to a constant slope. Adjust the height by loosening the knobs on both sides of an individual leg while another person raises or lower the conveyor. Once the desired top of wheel is achieved tighten the knob by hand snugly. Measure both sides to ensure both sides are the same height.



Figure 1 - Adjusting Conveyor Height

Handle/Stop Operation

The handle on the FlexExtend also serves as a package stop. The combination handle and stop can be set in a raised or lowered position.



Figure 2 - Handle/Package Stop in the Raised and Lowered Position

To use the handle or package stop, pivot the handle upward and engage the handle bracket onto the last axle and lower to lock in place. Reverse steps to lower the handle.



Figure 2 - Engaging the Handle/Package Stop into the Raised Position

Connecting Multiple Conveyors

Multiple FlexExtends can be connected by “hooking” the hooks at the beginning of one conveyor to the axle at handle end of another as shown in Figure

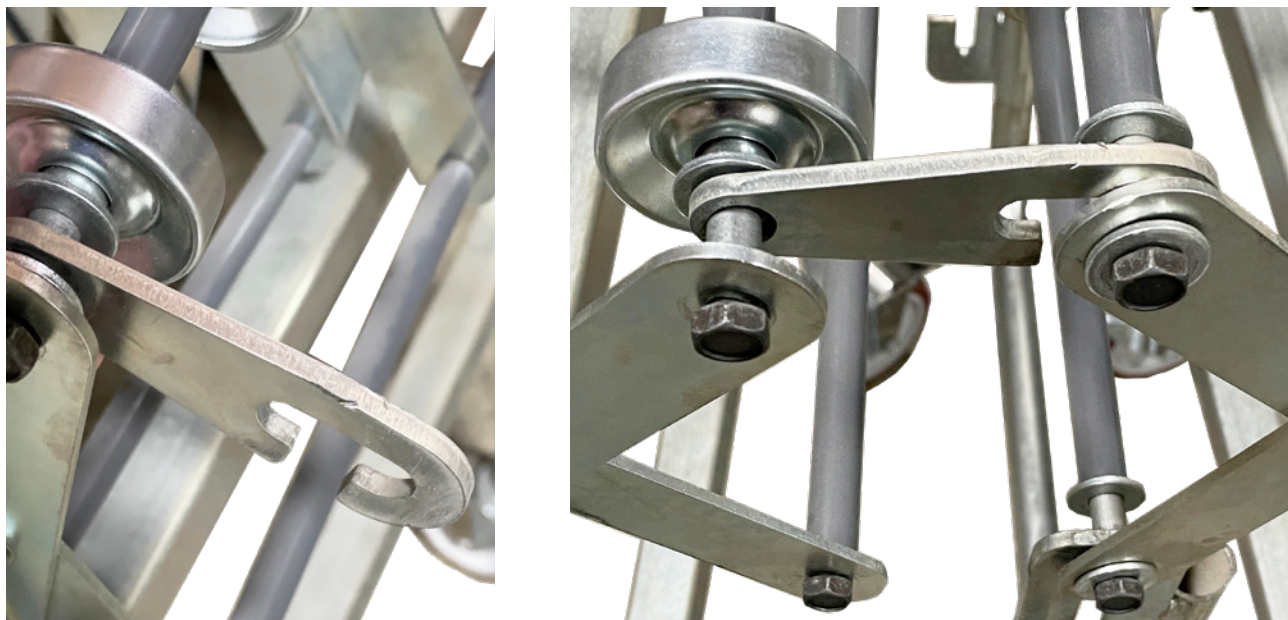


Figure 2 - Hooks Connecting Two FlexExtends Together

Operating Instructions

CAUTION: Do not exceed the rated capacity of the conveyor – 300 lbs (136 kg) per linear foot.

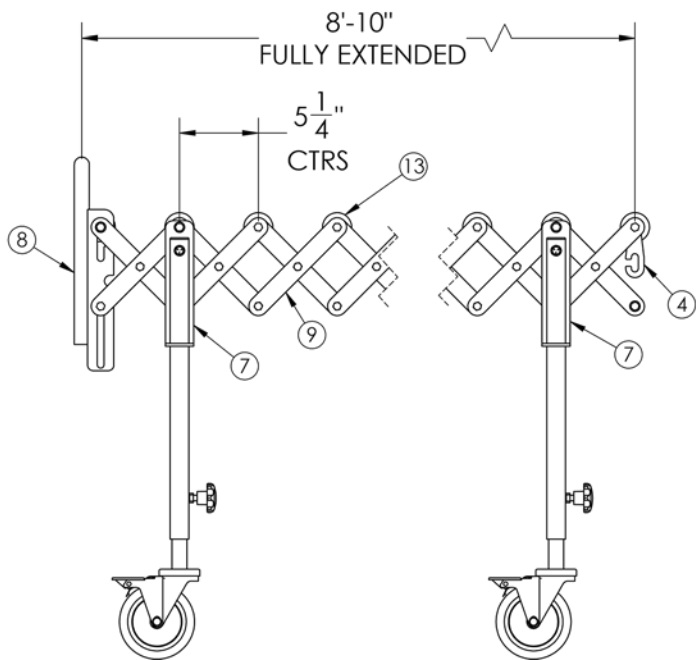
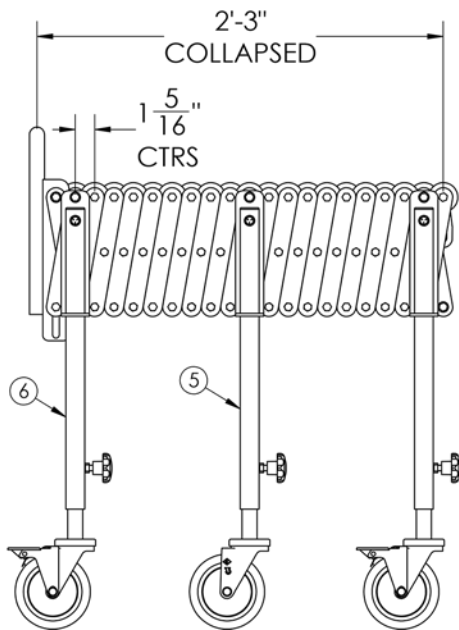
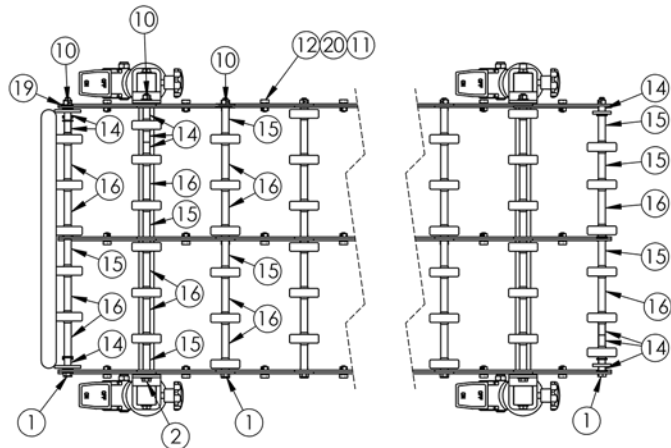
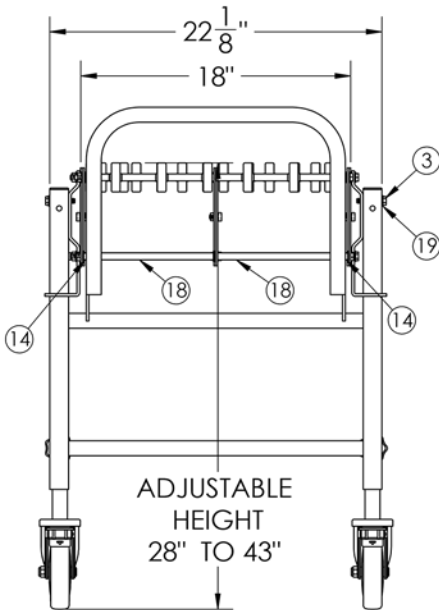
- Make certain that all uninvolved personnel are clear of the working area. Unlock the locking casters, grip the conveyor by the handle at the carton stop to move the conveyor. Be careful to avoid pinch points, such as the side link assemblies.
- Once the conveyor has been extended and positioned as desired, lock the caster brakes to maintain that position.
- Release the brakes to reposition the conveyor as needed.

Maintenance Instructions

The ACP FlexExtend Conveyor is virtually maintenance free; however, we do recommend the following:

- Keep the conveyor and the surrounding floor area clean and free of debris, dirt, and grease accumulation.
- Periodically inspect the conveyor for any loose or worn components. Tighten or replace if necessary.
- Inspect side link nuts and bolts frequently and regularly for looseness or missing parts. Tighten or replace as needed.

Replacement Parts 18" Model



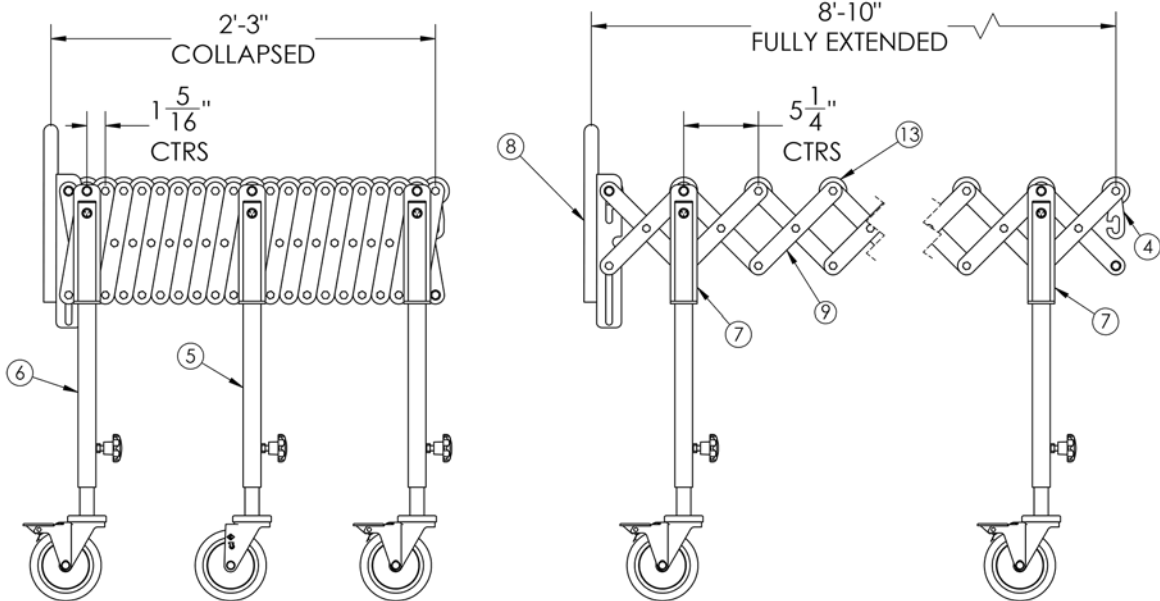
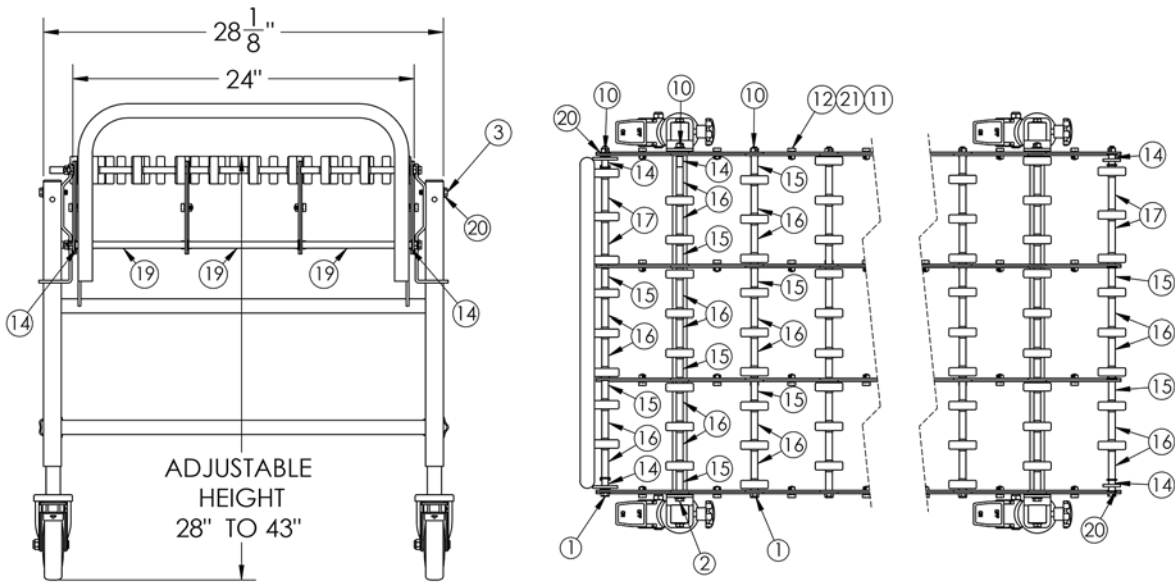
Replacement Parts 18" Model

Item	Part No	Description	Qty per 8'-10" Unit	Qty per each 4" Extension
1	69472	AXLEROD5/16-18X.38X18-3/8	24	10
2	69473	AXLEROD5/16-18X.5X19	6	2
3	69375	BOLT HEX 5/16-18 1.75 Z	6	2
4	69422	FLX HOOK .25 Z	2	0
5	69464	FLX LEG 18 5S 350	1	1
6	69461	FLX LEG 18 5SL 350	2	0
7	69333	FLXLGMNT 7GA Z	6	2
8	69476	FLXPKGSTOP 18Z	1	0
9	69330	FLXSIDELINK 11GA Z	120	54
10	41036	NUT 5/16-18 DETENT LOCK Z	30	12
11	10605	NUTHEX1/4-20DETENTZ	96	45
12	69347	SCR SHLDR 1/4-20 5/16X.295	96	45
13 ¹⁾	50753	SK40P1-1516X1316PH5/16	125	54
13 ¹⁾	69374	SK65G1-1516X1316 5/16	125	54
14	69244	SPACER 5/16X.75 STL	6	0
15	69251	SPACER 5/16X1.700 P	42	18
16	69245	SPACER 5/16X2.245 P	81	36
17 ²⁾	69254	SPACER 5/16X7.670 P	2	0
18	69493	SPACER 5/16X8.625 P	20	8
19	10660	WASHER 5/16 FLAT Z	42	8

1) Wheels may be SK40P (black polymer) or SK65G (zinc plated steel)

2) Item 17 replaces item 18 at the handle end

Replacement Parts 24" Model



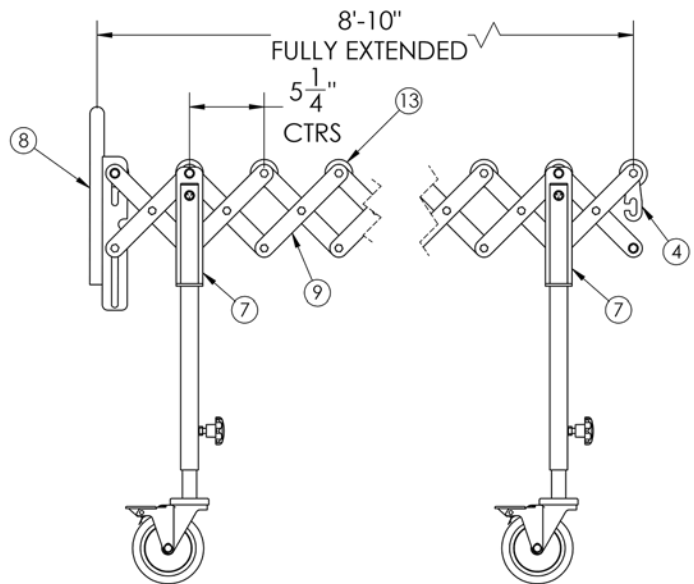
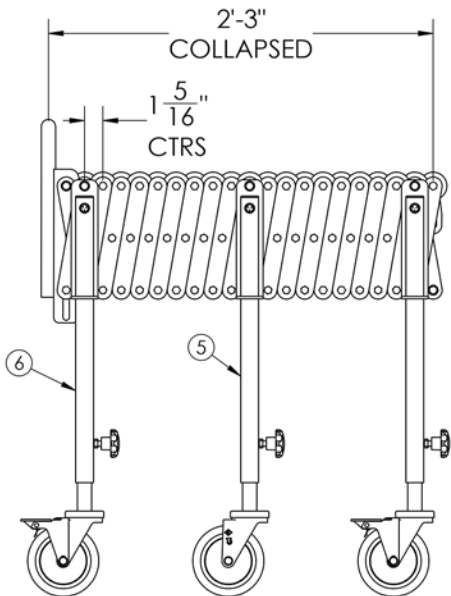
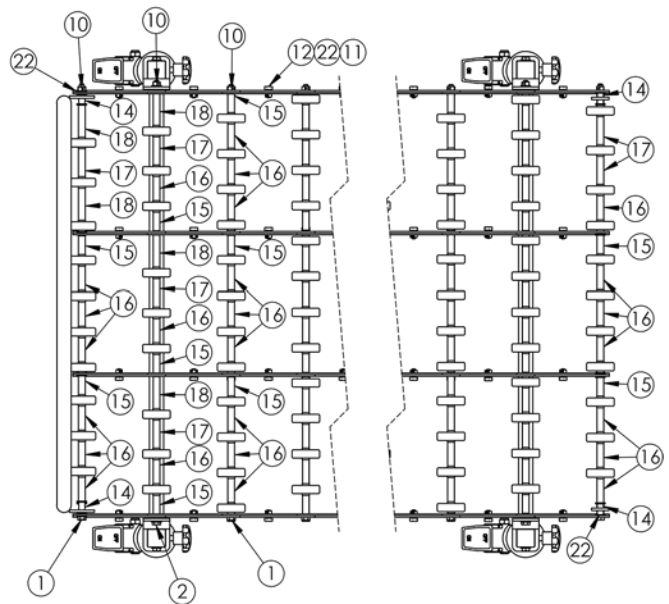
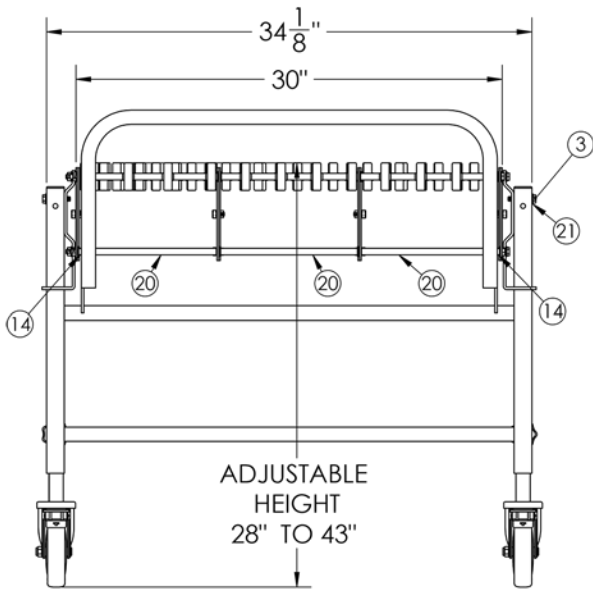
Replacement Parts 24" Model

Item	Part No	Description	Qty per 8'-10" Unit	Qty per each 4" Extension
1	69358	AXLEROD5/16-18X.38X24-3/8	24	10
2	69359	AXLEROD5/16-18X.5X25	6	2
3	69375	BOLT HEX 5/16-18 1.75 Z	6	2
4	69422	FLX HOOK .25 Z	2	0
5	69345	FLX LEG 24 5S 350	1	1
6	69346	FLX LEG 24 5SL 350	2	1
7	69333	FLXLGMNT 7GA Z	6	2
8	69332	FLXPKGSTOP 24Z	1	0
9	69330	FLXSIDELINK 11GA Z	160	72
10	41036	NUT 5/16-18 DETENT LOCK Z	30	12
11	10605	NUTHEX1/4-20DETENTZ	128	60
12	69347	SCR SHLDR 1/4-20 5/16X.295	128	60
13 ¹⁾	50753	SK40P1-1516X1316PH5/16	195	81
13 ¹⁾	69374	SK65G1-1516X1316 5/16	195	81
14	69244	SPACER 5/16X.75 STL	8	0
15	69247	SPACER 5/16X1.313 P	61	27
16	69249	SPACER 5/16X1.953 P	122	54
17	69245	SPACER 5/16X2.245 P	2	0
18 ²⁾	69453	SPACER 5/16X6.875 P	2	0
19	69254	SPACER 5/16X7.670 P	25	9
20	10660	WASHER 5/16 FLAT Z	42	8

1) Wheels may be SK40P (black polymer) or SK65G (zinc plated steel)

2) Item 18 replaces item 19 at the handle end

Replacement Parts 30" Model



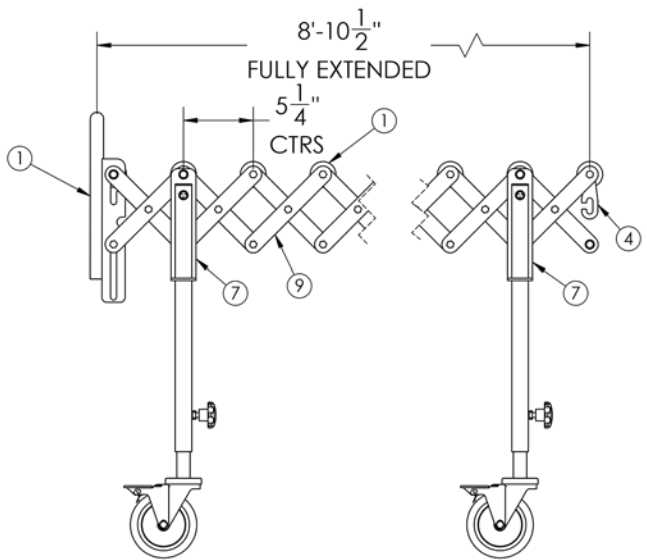
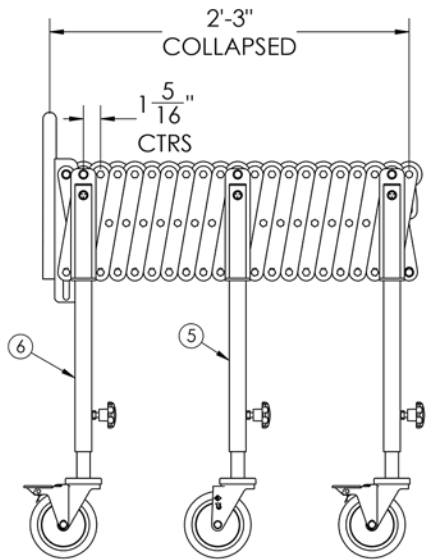
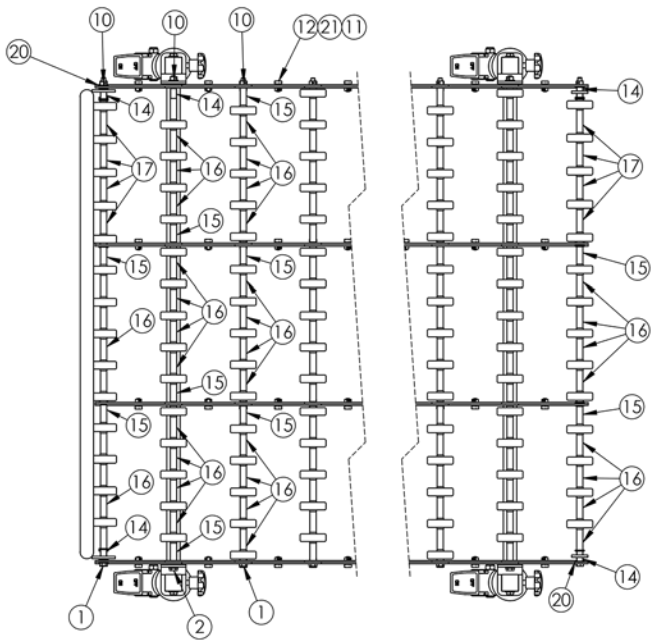
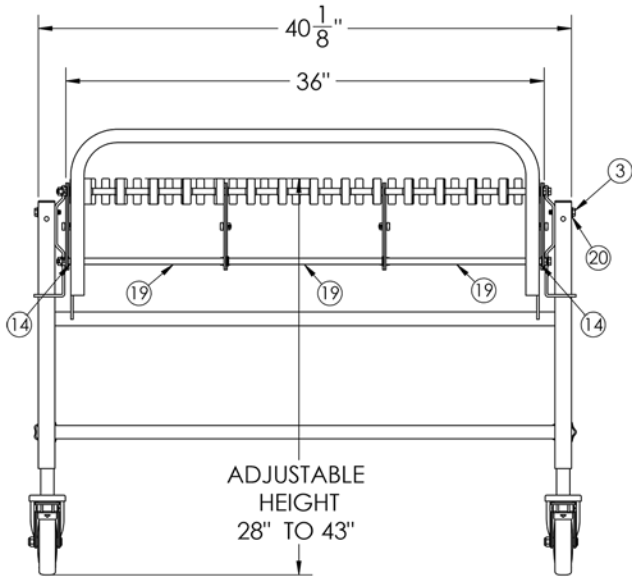
Replacement Parts 30" Model

Item	Part No	Description	Qty per 8'-10" Unit	Qty per each 4" Extension
1	69468	AXLEROD5/16-18X.38X30-3/8	24	10
2	69469	AXLEROD5/16-18X.5X31	6	2
3	69375	BOLT HEX 5/16-18 1.75 Z	6	2
4	69422	FLX HOOK .25 Z	2	0
5	69465	FLX LEG 30 5S 350	1	1
6	69462	FLX LEG 30 5SL 350	2	0
7	69333	FLXLGMNT 7GA Z	6	2
8	69474	FLXPKGSTOP 30Z	1	0
9	69330	FLXSIDELINK 11GA Z	160	72
10	41036	NUT 5/16-18 DETENT LOCK Z	30	12
11	10605	NUTHEX1/4-20DETENTZ	128	60
12	69347	SCR SHLDR 1/4-20 5/16X.295	128	60
13 ¹⁾	50753	SK40P1-1516X1316PH5/16	246	108
13 ¹⁾	69374	SK65G1-1516X1316 5/16	246	108
14	69244	SPACER 5/16X.75 STL	6	0
15	69247	SPACER 5/16X1.313 P	64	27
16	69251	SPACER 5/16X1.700 P	176	81
17	69249	SPACER 5/16X1.953 P	6	0
18	69245	SPACER 5/16X2.245 P	6	0
19 ²⁾	69482	SPACER 5/16X8.875 P	2	0
20	69481	SPACER 5/16X9.625 P	25	9
21	10660	WASHER 5/16 FLAT Z	42	8

1) Wheels may be SK40P (black polymer) or SK65G (zinc plated steel)

2) Item 19 replaces item 20 at the handle end

Replacement Parts 36" Model



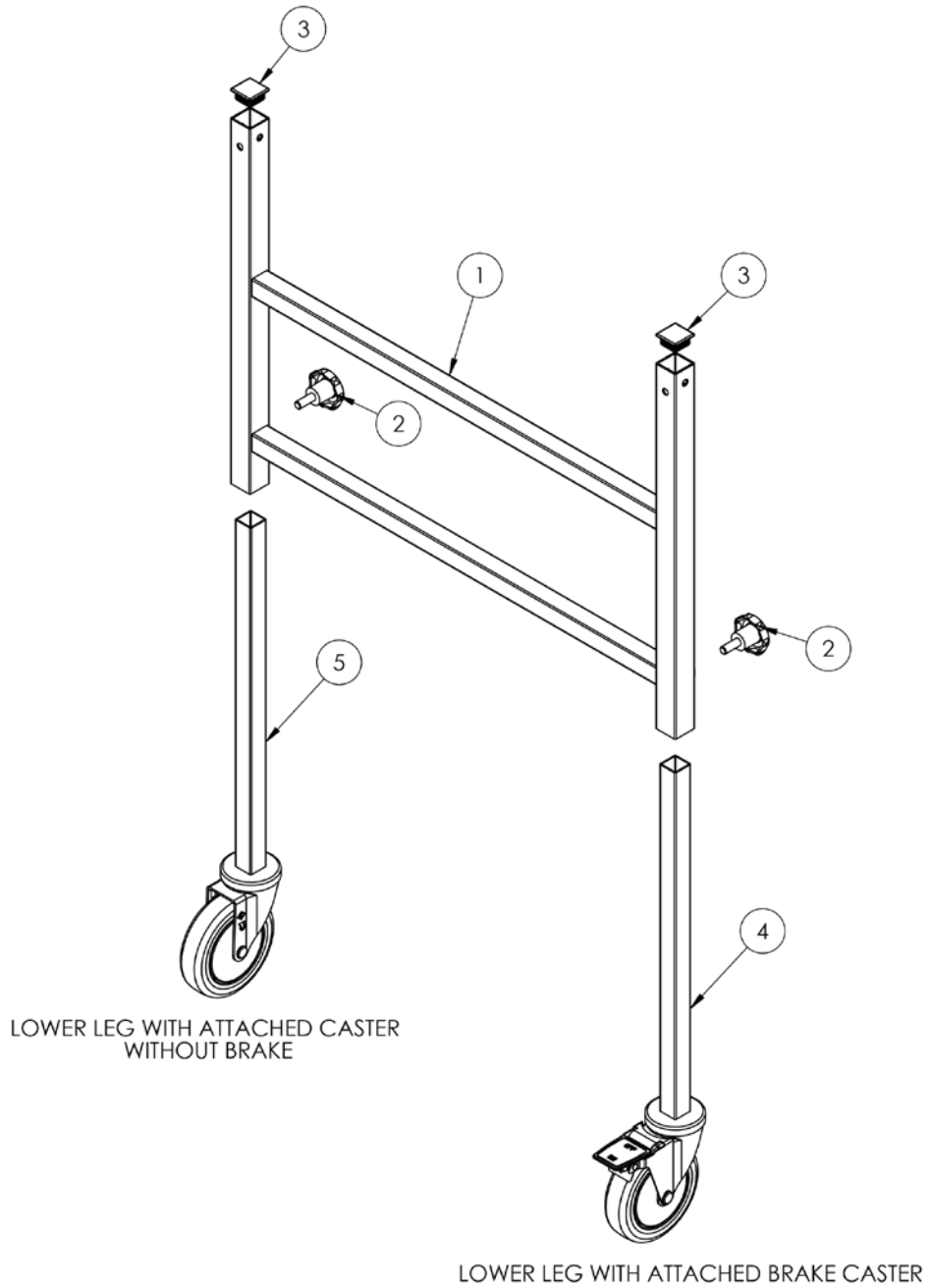
Replacement Parts 36" Model

Item	Part No	Description	Qty per 8'-10" Unit	Qty per each 4" Extension
1	69470	AXLEROD5/16-18X.38X36-3/8	24	10
2	69471	AXLEROD5/16-18X.5X37	6	2
3	69375	BOLT HEX 5/16-18 1.75 Z	6	2
4	69422	FLX HOOK .25 Z	2	0
5	69466	FLX LEG 36 5S 350	1	1
6	69463	FLX LEG 36 5SL 350	2	0
7	69333	FLXLGMNT 7GA Z	6	2
8	69475	FLXPKGSTOP 36Z	1	0
9	69330	FLXSIDELINK 11GA Z	160	72
10	41036	NUT 5/16-18 DETENT LOCK Z	30	12
11	10605	NUTHEX1/4-20DETENTZ	128	60
12	69347	SCR SHLDR 1/4-20 5/16X.295	128	60
13 ¹⁾	50753	SK40P1-1516X1316PH5/16	312	135
13 ¹⁾	69374	SK65G1-1516X1316 5/16	312	135
14	69244	SPACER 5/16X.75 STL	7	0
15	69247	SPACER 5/16X1.313 P	59	27
16	69253	SPACER 5/16X1.570 P	230	108
17	69251	SPACER 5/16X1.700 P	8	0
18 ²⁾	69491	SPACER 5/16X10.875 P	2	0
19	69246	SPACER 5/16X11.7 P	25	9
20	10660	WASHER 5/16 FLAT Z	42	8
21	69348	WASHER SPRG 5/16 Z	128	60

1) Wheels may be SK40P (black polymer) or SK65G (zinc plated steel)

2) Item 18 replaces item 19 at the handle end

Replacement Leg Parts



Replacement Leg Parts

Item	Part No	Description	Qty per 8'-10" Unit	Qty per each 4" Extension
1	69458	FLXUL18OF Z - For 18" Wide Flex	3	1
1	69336	FLXUL24OF Z - For 24" Wide Flex	3	1
1	69459	FLXUL30OF Z - For 30" Wide Flex	3	1
1	69460	FLXUL36OF Z - For 36" Wide Flex	3	1
2	69343	FLXULKNOB 3/8-16	6	2
3	69344	TUBEPLUG1-1/4 14GA P	6	2
4	69340	FLXLLCSTR5SL 350	4	0
5	69339	FLX LEG 36 5SL 350	2	2