

**NOTES:**

1. ALL AXLES, ROLLERS, AND PIVOT POINTS ARE EQUIPPED WITH LIFETIME LUBRICATED BEARINGS.
2. LIFT TO BE PAINTED AQ STANDARD ENAMEL.
3. MEETS OR EXCEEDS ANSI MH29.1 STANDARD FOR INDUSTRIAL SCISSORS LIFTS.

THIS PROPOSAL DRAWING IS GENERIC BY DESIGN AND IS FOR REFERENCE ONLY. PLEASE CONTACT AUTOQUIP FOR JOB SPECIFIC APPROVAL DRAWINGS.

**MODEL NO:** \_\_\_\_\_

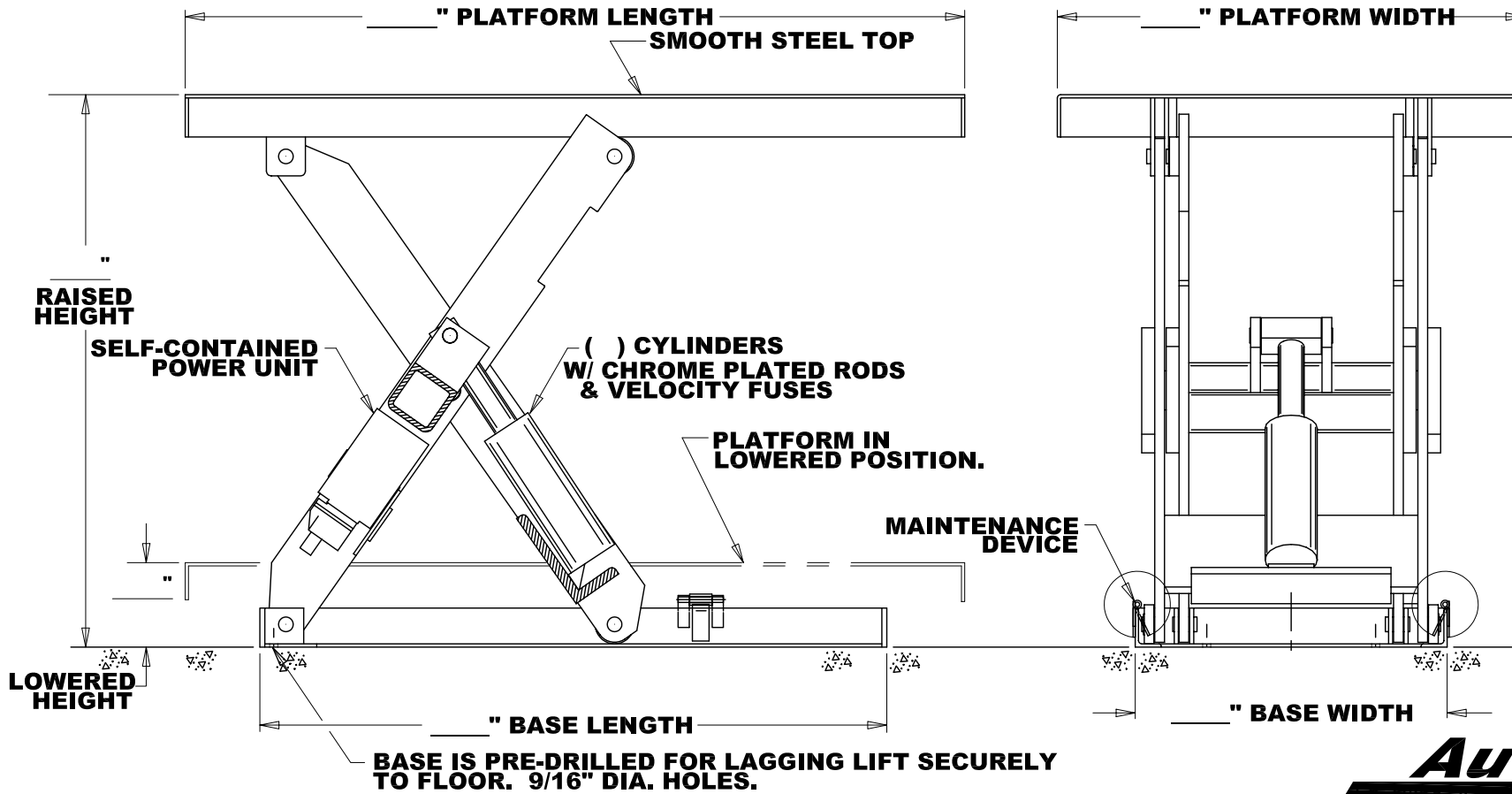
**MAX CAPACITY:** \_\_\_\_\_

**LOWERED HEIGHT:** \_\_\_\_\_

**TRAVEL:** \_\_\_\_\_

**RAISED HEIGHT:** \_\_\_\_\_

**POWER UNIT, CONTROLS, AND ACCESSORIES PER QUOTATION.**



(NOT TO SCALE)  
 PROPOSAL DRAWING  
 QUOTE NO. \_\_\_\_\_

**SERIES 35 - SURFACE MOUNTED**

OVERSIZED PLATFORM

© COPYRIGHT RESERVED  
 AUTOQUIP CORPORATION  
 2002



**AUTOQUIP CORP.**  
 1058 W.INDUSTRIAL AVE.  
 GUTHRIE, OK 73044-1058  
 888-811-9876 WWW.AUTOQUIP.COM