

**BALDOR® • RELIANCE** 

**Product Information Packet**

**L3703**

**2HP, 1140RPM, 1PH, 60HZ, 215, 3735LC, TEFC, F1**

| Part Detail |        |             |            |             |        |               |    |
|-------------|--------|-------------|------------|-------------|--------|---------------|----|
| Revision:   | AN     | Status:     | PRD/A      | Change #:   |        | Proprietary:  | No |
| Type:       | AC     | Elec. Spec: | 37WG0469   | CD Diagram: | CD0076 | Mfg Plant:    |    |
| Mech. Spec: | 37C011 | Layout:     | 37LYC011   | Poles:      | 06     | Created Date: |    |
| Base:       | RG     | Eff. Date:  | 07-17-2019 | Leads:      | 8#14   |               |    |

| Specs                           |                         |                                |                       |
|---------------------------------|-------------------------|--------------------------------|-----------------------|
| Catalog Number:                 | L3703                   | Insulation Class:              | F                     |
| Enclosure:                      | TEFC                    | Inverter Code:                 | Not Inverter          |
| Frame:                          | 215                     | KVA Code:                      | J                     |
| Frame Material:                 | Steel                   | Lifting Lugs:                  | Standard Lifting Lugs |
| Output @ Frequency:             | 2.000 HP @ 60 HZ        | Locked Bearing Indicator:      | No Locked Bearing     |
| Synchronous Speed @ Frequency:  | 1200 RPM @ 60 HZ        | Motor Lead Quantity/Wire Size: | 8 @ 14 AWG            |
| Voltage @ Frequency:            | 230.0 V @ 60 HZ         | Motor Lead Exit:               | Ko Box                |
|                                 | 115.0 V @ 60 HZ         | Motor Lead Termination:        | Flying Leads          |
| XP Class and Group:             | None                    | Motor Type:                    | 3735LC                |
| XP Division:                    | Not Applicable          | Mounting Arrangement:          | F1                    |
| Agency Approvals:               | CSA                     | Power Factor:                  | 82                    |
|                                 | UR                      | Product Family:                | General Purpose       |
| Auxillary Box:                  | No Auxillary Box        | Pulley End Bearing Type:       | Ball                  |
| Auxillary Box Lead Termination: | None                    | Pulley Face Code:              | Standard              |
| Base Indicator:                 | Rigid                   | Pulley Shaft Indicator:        | Standard              |
| Bearing Grease Type:            | Polyrex EM (-20F +300F) | Rodent Screen:                 | None                  |
| Blower:                         | None                    | Shaft Extension Location:      | Pulley End            |
| Current @ Voltage:              | 18.800 A @ 115.0 V      | Shaft Ground Indicator:        | No Shaft Grounding    |

|                                       |                           |                                    |                     |
|---------------------------------------|---------------------------|------------------------------------|---------------------|
|                                       | 9.400 A @ 230.0 V         | <b>Shaft Rotation:</b>             | Reversible          |
|                                       | 9.900 A @ 208.0 V         | <b>Shaft Slinger Indicator:</b>    | No Slinger          |
| <b>Design Code:</b>                   | L                         | <b>Speed Code:</b>                 | Single Speed        |
| <b>Drip Cover:</b>                    | No Drip Cover             | <b>Motor Standards:</b>            | NEMA                |
| <b>Duty Rating:</b>                   | CONT                      | <b>Starting Method:</b>            | Direct on line      |
| <b>Electrically Isolated Bearing:</b> | Not Electrically Isolated | <b>Thermal Device - Bearing:</b>   | None                |
| <b>Feedback Device:</b>               | NO FEEDBACK               | <b>Thermal Device - Winding:</b>   | None                |
| <b>Front Face Code:</b>               | Standard                  | <b>Vibration Sensor Indicator:</b> | No Vibration Sensor |
| <b>Front Shaft Indicator:</b>         | None                      | <b>Winding Thermal 1:</b>          | None                |
| <b>Heater Indicator:</b>              | No Heater                 | <b>Winding Thermal 2:</b>          | None                |

| Nameplate NP1256L |              |  |  |      |     |      |   |  |                |     |
|-------------------|--------------|--|--|------|-----|------|---|--|----------------|-----|
| CAT.NO.           | L3703        |  |  |      |     |      |   |  |                |     |
| SPEC.             | 37C11-469    |  |  |      |     |      |   |  |                |     |
| HP                | 2            |  |  |      |     |      |   |  |                |     |
| VOLTS             | 115/230      |  |  |      |     |      |   |  |                |     |
| AMP               | 18.8/9.4     |  |  |      |     |      |   |  |                |     |
| RPM               | 1140         |  |  |      |     |      |   |  |                |     |
| FRAME             | 215          |  |  |      | HZ  | 60   |   |  | PH             | 1   |
| SER.F.            | 1.00         |  |  | CODE | J   | DES  | L |  | CLASS          | F   |
| NEMA-NOM-EFF      | 80           |  |  | PF   | 82  |      |   |  |                |     |
| RATING            | 40C AMB-CONT |  |  |      |     |      |   |  |                |     |
| CC                |              |  |  |      |     |      |   |  | USABLE AT 208V | 9.9 |
| DE                | 6307         |  |  |      | ODE | 6206 |   |  |                |     |
| ENCL              | TEFC         |  |  | SN   |     |      |   |  |                |     |

| Parts List  |  |          |
|-------------|--|----------|
| Part Number | Description                              | Quantity |
| SA030591    | SA 37C11-469                             | 1.000 EA |
| RA026630    | RA 37C11-469                             | 1.000 EA |
| OC3020F12SP | CAPACITORS 20 MFD 370 VAC                | 1.000 EA |
| EC1400A03SP | ELEC CAP, 400-480 MFD, 125V, 1.81D X 3.  | 2.000 EA |
| HA6361A01   | LIFTING LUG FOR 37, 39 & 40 FRAME ZINC   | 2.000 EA |
| 37CB3006    | 37 CB CASTING W/1.38 LEAD HOLE @ 6:00    | 1.000 EA |
| 37GS1000SP  | GASKET, CONDUIT BOX STD., .06 THICK LEXI | 1.000 EA |
| 51XW2520A12 | .25-20 X .75, TAPTITE II, HEX WSHR SLTD  | 2.000 EA |
| 11XW1032G06 | 10-32 X .38, TAPTITE II, HEX WSHR SLTD U | 1.000 EA |
| 37EP3101A01 | FR ENDPLATE, FOR ROUTING PURPOSES        | 1.000 EA |
| HW4500A01   | 1641B(ALEMITE)400 UNIV, GREASE FITT      | 1.000 EA |
| 13XT0832A07 | 8-32X7/16 TYP 23 PAN HD SLT DX           | 2.000 EA |
| 37GS3012A01 | GASKET,CAP.BOX 1/16"THICKLEXIDE SV-330 T | 1.000 EA |
| 10XN2520A10 | 1/4-20X 5/8 HEX HD X                     | 2.000 EA |
| HW1001A25   | LOCKWASHER 1/4, ZINC PLT .493 OD, .255 I | 2.000 EA |
| HW5100A06   | W2420-025 WVY WSHR (WB)                  | 1.000 EA |
| 37PE3100A01 | PUEP ASSEMBLY - ROUTING PUPROSES         | 1.000 EA |
| HW4500A01   | 1641B(ALEMITE)400 UNIV, GREASE FITT      | 1.000 EA |
| XY3118A12   | 5/16-18 HEX NUT DIRECTIONAL SERRATION    | 4.000 EA |
| 07FH4007A41 | IEC FH W/GRSR, NOTCH @ 6:00 & 3 FAN CVR, | 1.000 EA |
| 51XW1032A06 | 10-32 X .38, TAPTITE II, HEX WSHR SLTD S | 3.000 EA |
| 37CB4516    | LIPPED LID FOR 37 FRAME NEC KOBX         | 1.000 EA |
| 37GS1008    | 37 GS FOR CB LID - LEXIDE                | 1.000 EA |
| 51XW0832A07 | 8-32 X .44, TAPTITE II, HEX WSHR SLTD SE | 4.000 EA |

| Parts List (continued) |  |          |
|------------------------|--|----------|
| Part Number            | Description                              | Quantity |
| HW2501E18              | KEY, 1/4 SQ X 2.000                      | 1.000 EA |
| HA7000A02              | KEY RETAINER RING, 1 1/8 DIA, 1 3/8 DIA  | 1.000 EA |
| 85XU0407S04            | 4X1/4 U DRIVE PIN STAINLESS              | 2.000 EA |
| LB1115N                | LABEL,LIFTING DEVICE (ON ROLLS)          | 1.000 EA |
| 37CB3802SP             | CAPACITOR COVER, CAST                    | 1.000 EA |
| HA7010A01              | CAPACITOR RETENTION CLAMP, 6.562 LONG    | 1.000 EA |
| MJ1000A02              | GREASE, MOBIL POLYREX EM - 124047        | 0.050 LB |
| 37FN3002A01SP          | EXFN, PLASTIC, 9.00 OD, 1.155 ID         | 1.000 EA |
| 51XB1214A20            | 12-14X1.25 HXWSSLD SERTYB                | 1.000 EA |
| MG1000G27              | MED CHARCOAL METALLIC GREY 400-0096      | 0.028 GA |
| WD1000A15              | 3-520132-2 AMP FLAG (4M/RL NON-CANC/NON- | 6.000 EA |
| SP5127A10              | MODEL 37 TYPE L/LC STATIONARY SWITCH LEA | 1.000 EA |
| HA3104A27              | THRUBOLT 5/16 18 X 12.438 X              | 4.000 EA |
| LB1119N                | WARNING LABEL                            | 1.000 EA |
| LC0076                 | CONNECTION LABEL                         | 1.000 EA |
| NP1256L                | ALUM UL CSA CC INDUSTRIAL MOTOR A60      | 1.000 EA |
| 36PA1001               | PKG GRP, PRINT PK1017A06                 | 1.000 EA |
| NS2539                 | INSULATOR FOR 37 FRAMESWITCH (MH1011A10) | 1.000 EA |
| NS2539                 | INSULATOR FOR 37 FRAMESWITCH (MH1011A10) | 1.000 EA |
| MN416A01               | TAG-INSTAL-MAINT no wire (1200/bx) 3/19  | 1.000 EA |

| <b>Accessories</b> |                    |                   |
|--------------------|--------------------|-------------------|
| <b>Part Number</b> | <b>Description</b> | <b>Multiplier</b> |
| 37-3301            | C FACE KIT         | P1                |

**AC Induction Motor Performance Data**

Record # 61383 - Typical performance - not guaranteed values

|                               |                     |                        |
|-------------------------------|---------------------|------------------------|
| <b>Winding:</b> 37WG0469-R007 | <b>Type:</b> 3735LC | <b>Enclosure:</b> TEFC |
|-------------------------------|---------------------|------------------------|

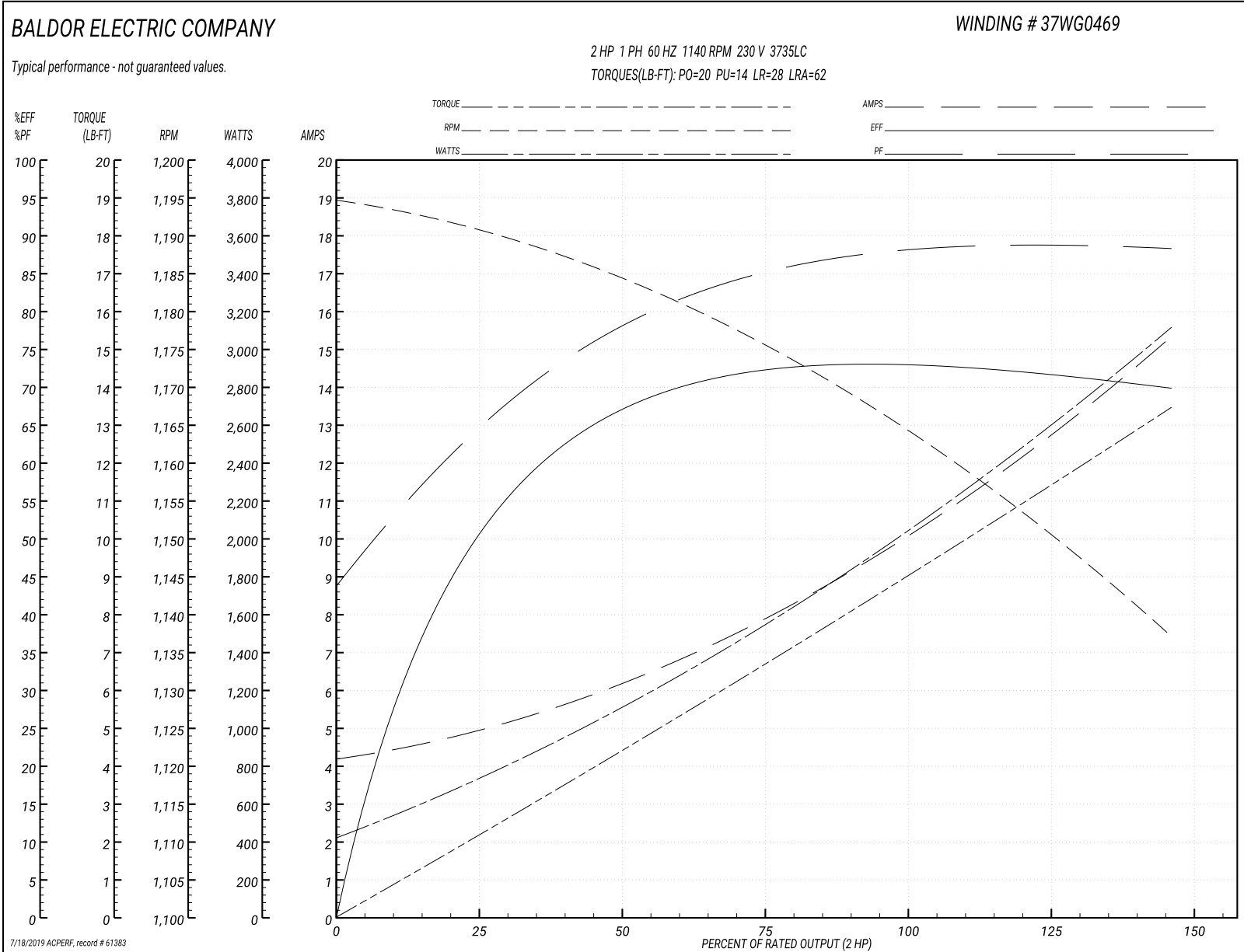
| Nameplate Data        |              |              |    | 230 V, 60 Hz:<br>High Voltage Connection |                             |
|-----------------------|--------------|--------------|----|--|-----------------------------|
| Rated Output (HP)     | 2            |              |    | Full Load Torque                         | 9 LB-FT                     |
| Volts                 | 115/230      |              |    | Start Configuration                      | direct on line              |
| Full Load Amps        | 18.8/9.4     |              |    | Breakdown Torque                         | 20 LB-FT                    |
| R.P.M.                | 1140         |              |    | Pull-up Torque                           | 14 LB-FT                    |
| Hz                    | 60           | Phase        | 1  | Locked-rotor Torque                      | 28 LB-FT                    |
| NEMA Design Code      | L            | KVA Code     | J  | Starting Current                         | 62 A                        |
| Service Factor (S.F.) | 1            |              |    | No-load Current                          | 4.2 A                       |
| NEMA Nom. Eff.        | 80           | Power Factor | 82 | Line-line Res. @ 25°C                    | 0.839 Ω A Ph<br>3.64 Ω B Ph |
| Rating - Duty         | 40C AMB-CONT |              |    | Temp. Rise @ Rated Load                  | 58°C                        |

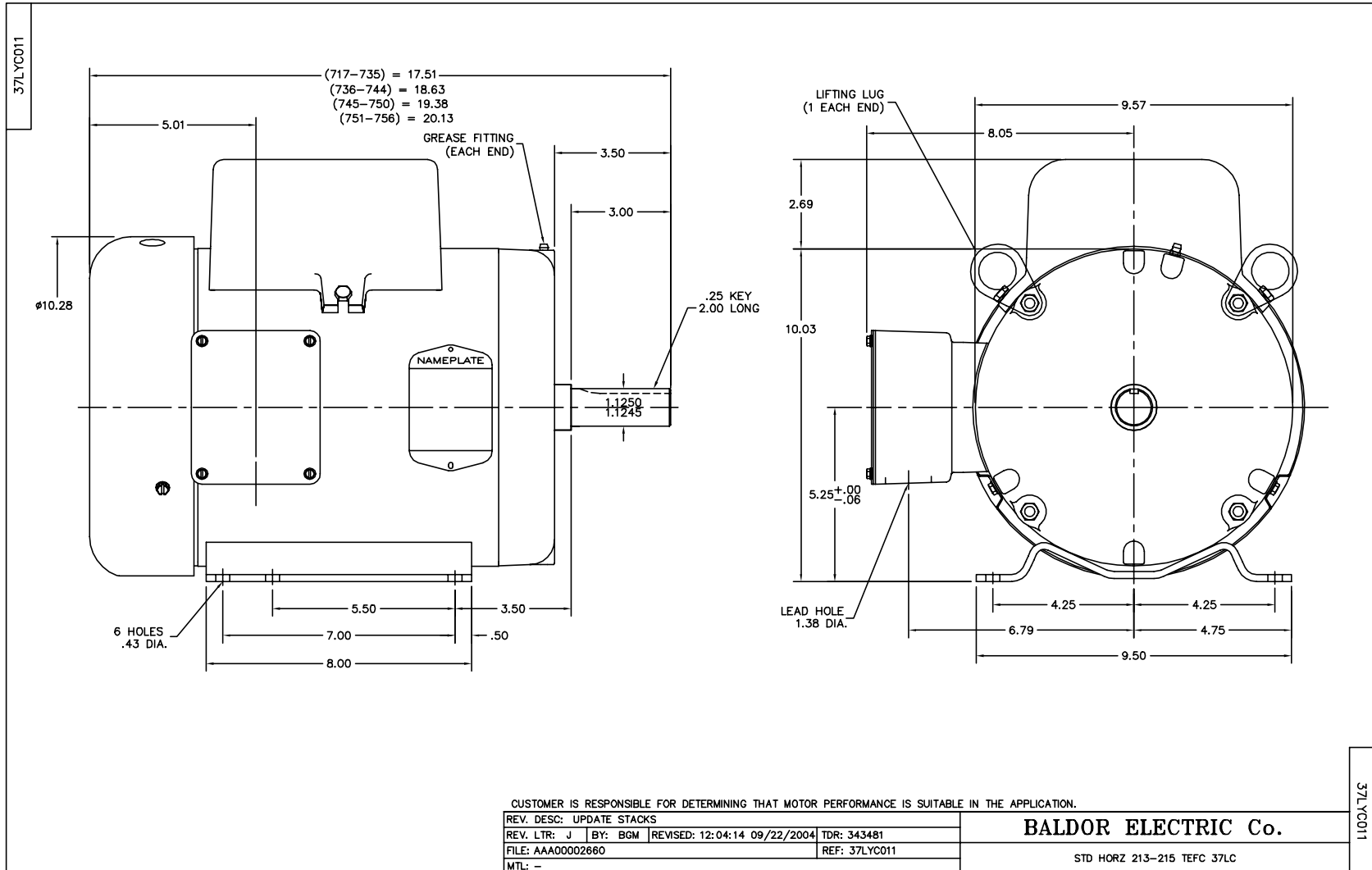
Load Characteristics 230 V, 60 Hz, 2 HP

| % of Rated Load | 25   | 50   | 75   | 100  | 125  | 150  |
|-----------------|------|------|------|------|------|------|
| Power Factor    | 69   | 81   | 85   | 88   | 88   | 88   |
| Efficiency      | 50.5 | 65.9 | 72.1 | 73.8 | 72.6 | 69.3 |
| Speed           | 1191 | 1183 | 1175 | 1165 | 1153 | 1136 |
| Line amperes    | 4.9  | 6.3  | 8    | 10   | 12.5 | 15.4 |

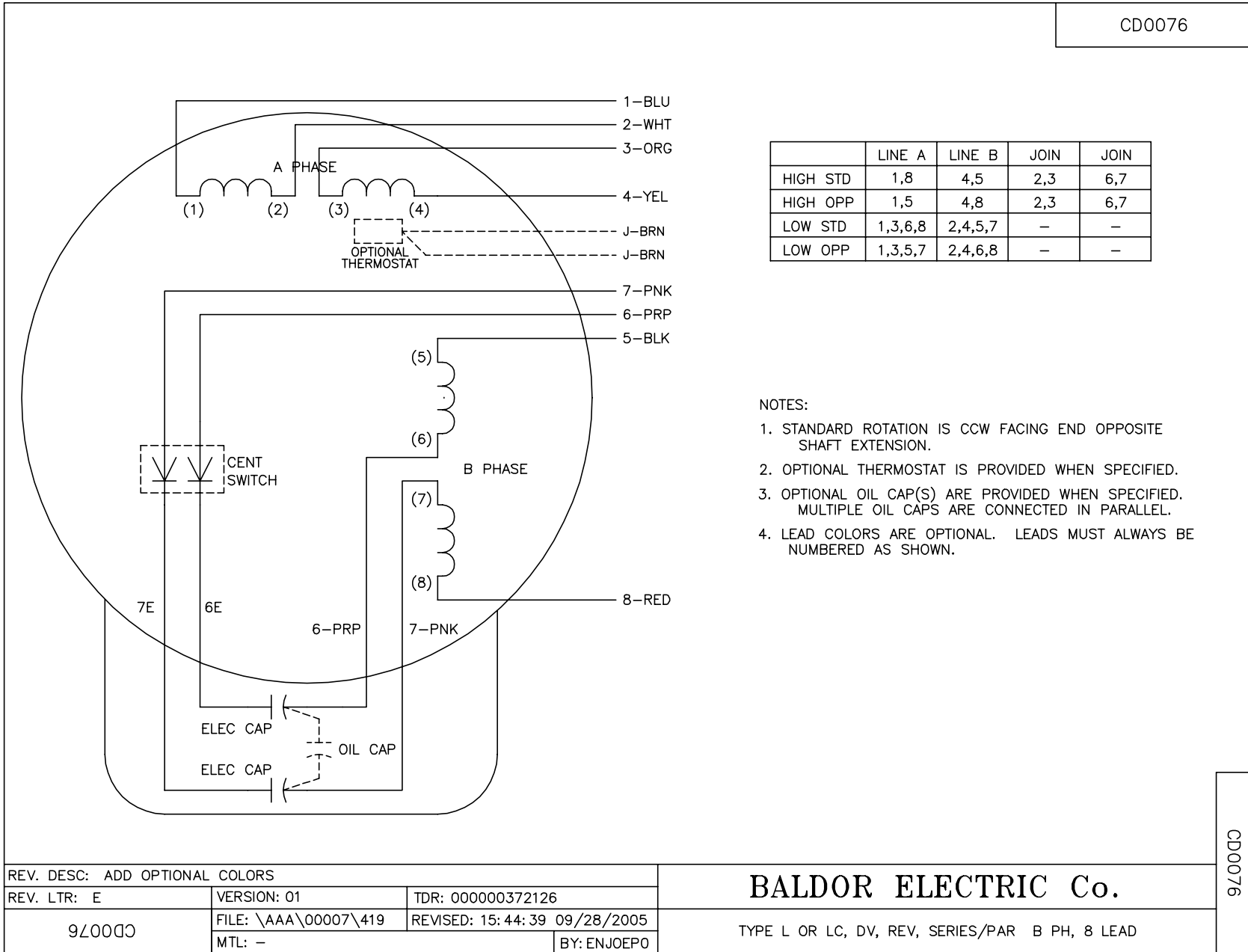


Performance Graph at 230V, 60Hz, 2.0HP Typical performance - Not guaranteed values





CD0076



|          | LINE A  | LINE B  | JOIN | JOIN |
|----------|---------|---------|------|------|
| HIGH STD | 1,8     | 4,5     | 2,3  | 6,7  |
| HIGH OPP | 1,5     | 4,8     | 2,3  | 6,7  |
| LOW STD  | 1,3,6,8 | 2,4,5,7 | -    | -    |
| LOW OPP  | 1,3,5,7 | 2,4,6,8 | -    | -    |

- NOTES:
1. STANDARD ROTATION IS CCW FACING END OPPOSITE SHAFT EXTENSION.
  2. OPTIONAL THERMOSTAT IS PROVIDED WHEN SPECIFIED.
  3. OPTIONAL OIL CAP(S) ARE PROVIDED WHEN SPECIFIED. MULTIPLE OIL CAPS ARE CONNECTED IN PARALLEL.
  4. LEAD COLORS ARE OPTIONAL. LEADS MUST ALWAYS BE NUMBERED AS SHOWN.

CD0076

|                                |                      |                              |  |
|--------------------------------|----------------------|------------------------------|--|
| REV. DESC: ADD OPTIONAL COLORS |                      |                              |  |
| REV. LTR: E                    | VERSION: 01          | TDR: 000000372126            |  |
| 9Z00D0                         | FILE: \AAA\00007\419 | REVISED: 15:44:39 09/28/2005 |  |
|                                | MTL: -               | BY: ENJOEPO                  |  |

**BALDOR ELECTRIC Co.**

TYPE L OR LC, DV, REV, SERIES/PAR B PH, 8 LEAD